

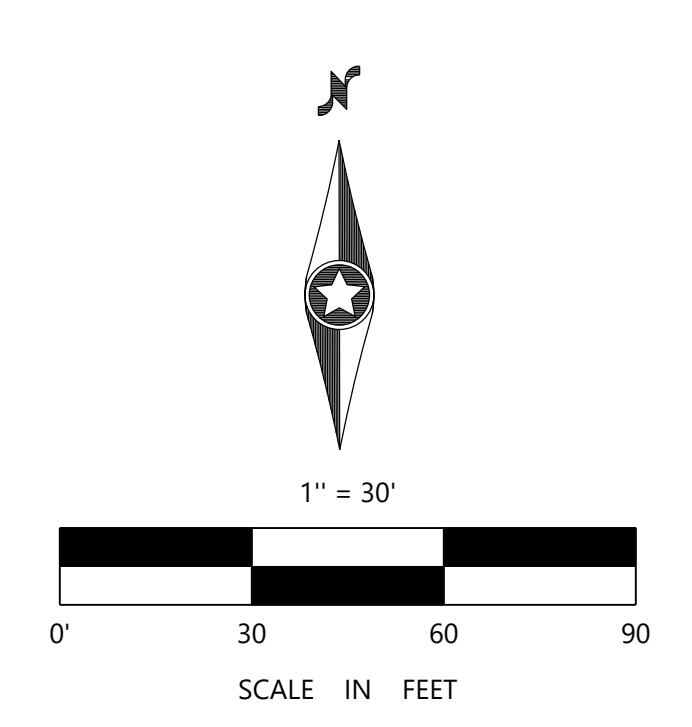
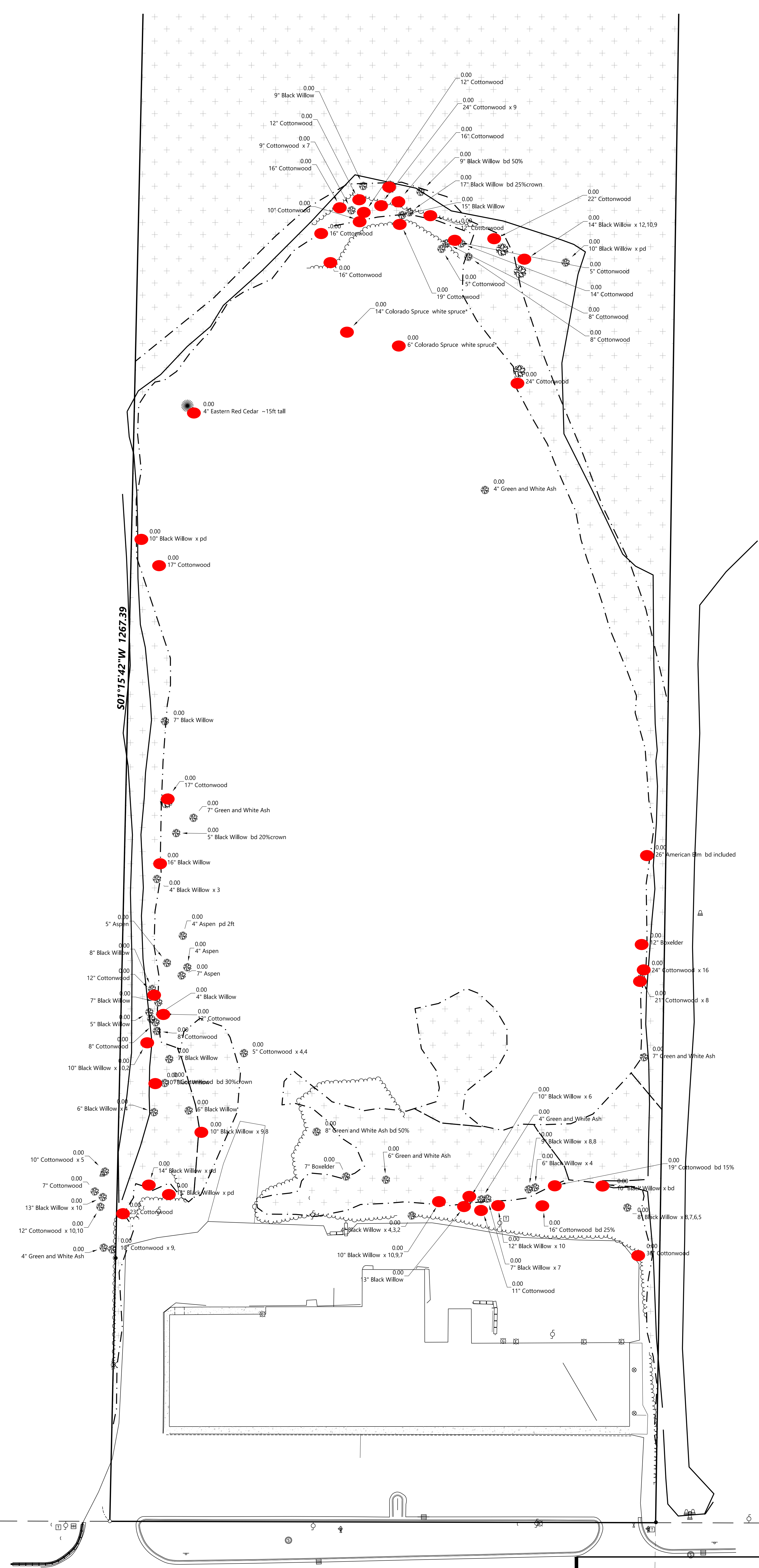


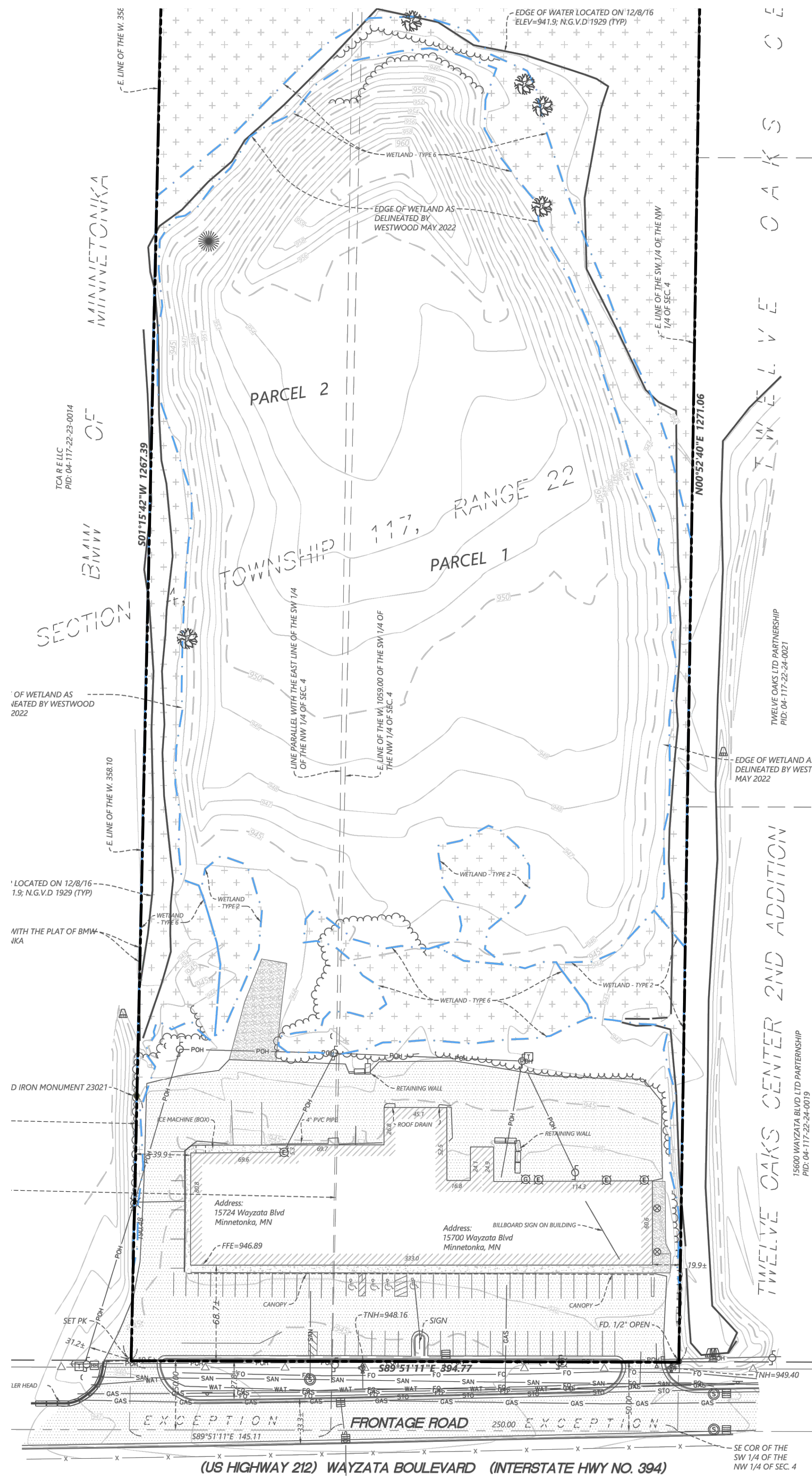
LOCATION MAP

Project: Walser Kia
Location: 15700 Minnetonka Blvd

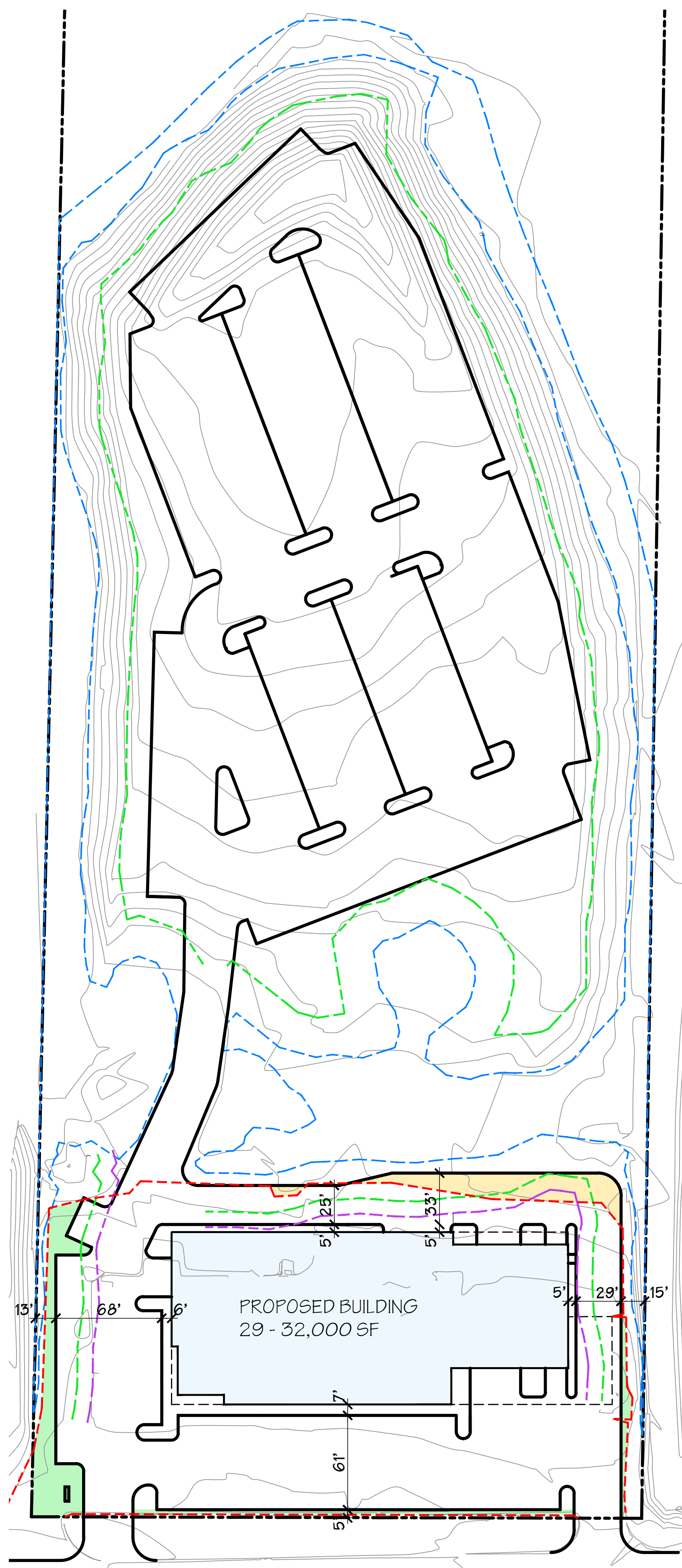


© 2022 Westwood Professional Services, Inc.





3
ALD
EXIST CONDITIONS
1"=50'-0"
NORTH



2
ALD
SITE PLAN
1"=50'-0"
NORTH

KEY

- BOUNDARY OF WETLAND
- 25 FOOT PARKING SETBACK FROM WETLAND
- 35 FOOT BUILDING SETBACK FROM WETLAND
- EDGE OF EXISTING PAVEMENT
- NEW PAVEMENT BEYOND EXISTING (2,525 SF)
- EXISTING PAVEMENT REMOVED (4,245 SF)
- NEW DEALERSHIP BUILDING WITH PARTIAL SECOND FLOOR LEVEL

PROPOSED NEW BUILDING FOR:
WALSER KIA

HIGHWAY 394
MINNETONKA, MINNESOTA

© COPYRIGHT 2022 PHILLIPS Architects & Contractors, Ltd.
PHILLIPS ARCHITECTS & CONTRACTORS, LTD.
401 North Third Street,
Suite 450
Minneapolis, MN 55401
Ph. (612) 868-1261
www.phillipsarchitects.com

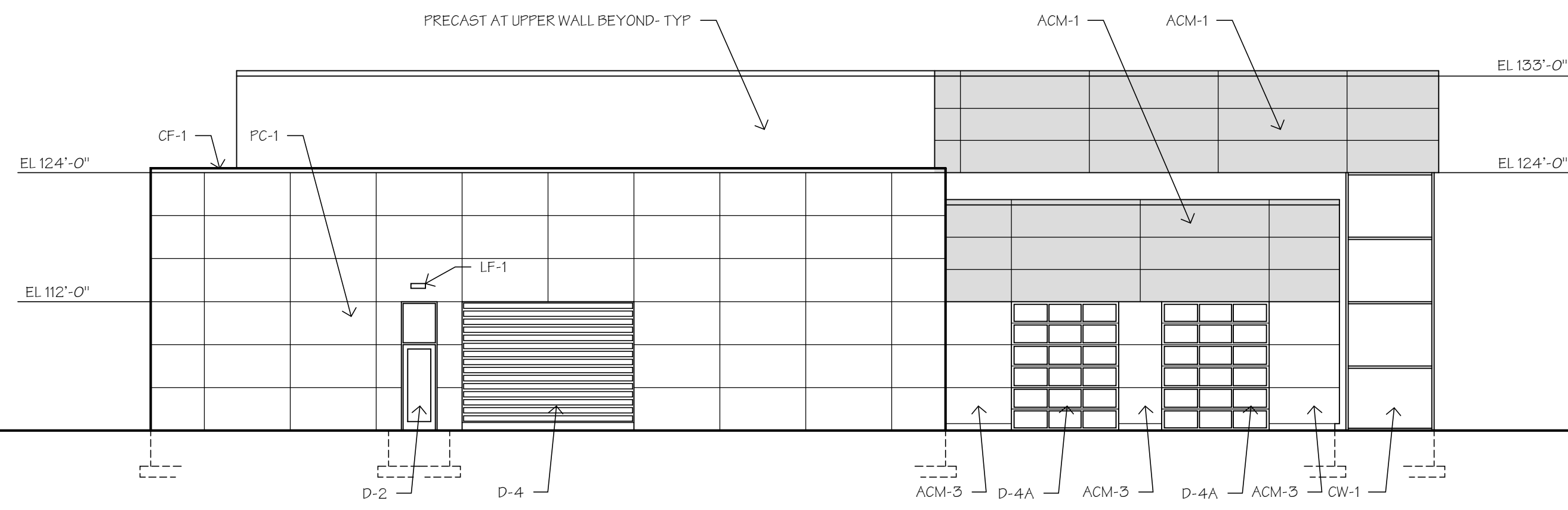
I HEREBY CERTIFY THAT THIS PLAN, SPECIFICATION, OR REPORT WAS PREPARED BY ME OR UNDER MY DIRECT SUPERVISION AND THAT I AM A DULY LICENSED ARCHITECT UNDER THE LAWS OF THE STATE OF MINNESOTA.
David A. Phillips

DATE: _____ LICENSE # 17387
ISSUE/REVISION: 10/5/2022 CITY SUBMITTAL

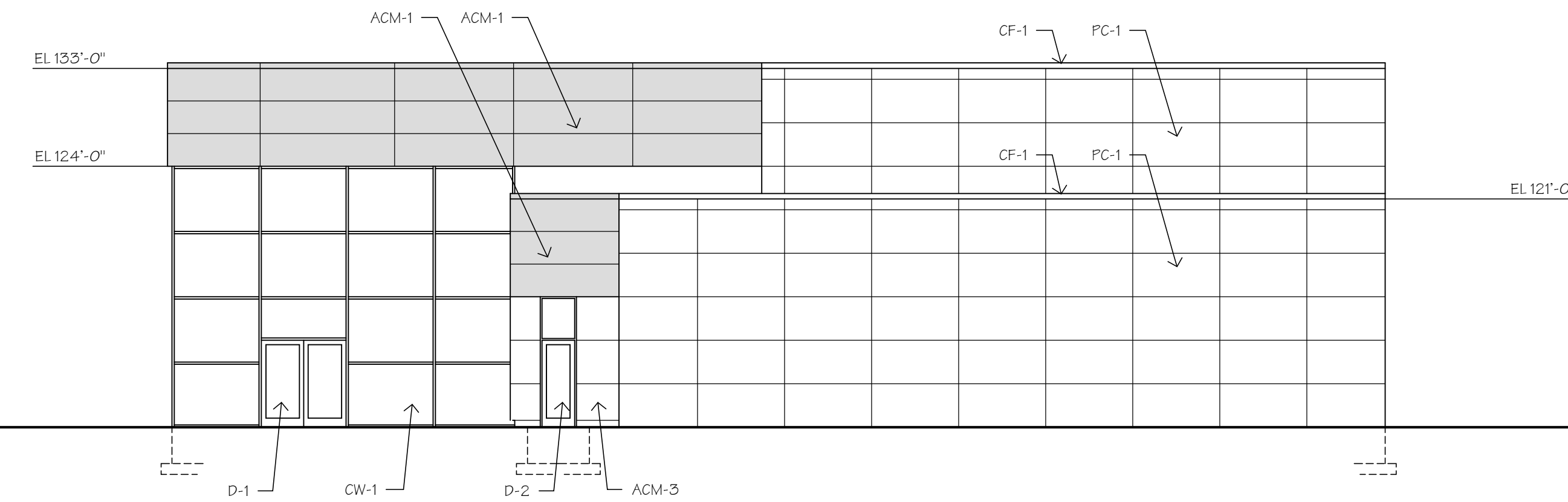
DRAWN BY: _____
CHECKED BY: DAF
PROJECT NO.:

PRELIMINARY SITE PLAN

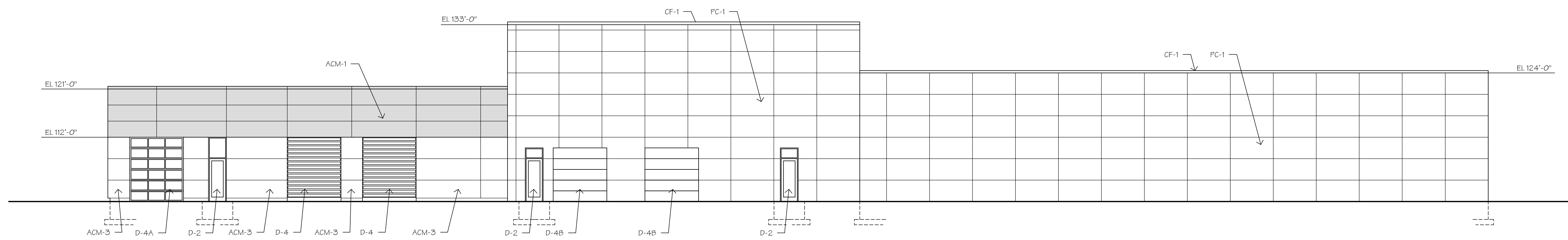
A1.0



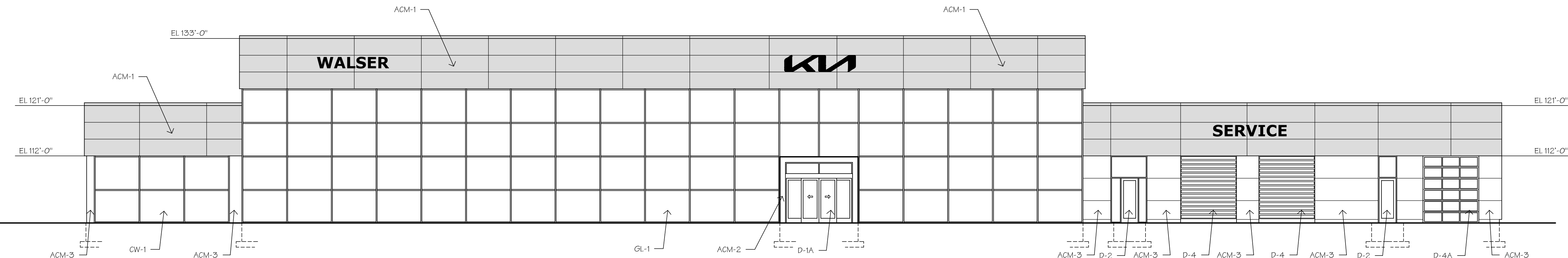
4 WEST ELEVATION
A3.0 3/32"=1'-0"



3 EAST ELEVATION
A3.0 3/32"=1'-0"



2 NORTH ELEVATION
A3.0 3/32"=1'-0"



1 SOUTH ELEVATION
A3.0 3/32"=1'-0"

KEY

- ACM-1 ACM WALL PANEL - PREFINISHED MANUFACTURED BY - ALPOLIC / FR DRY JOINT SYSTEM COLOR: "JOB BLACK"
- ACM-2 ENTRY PORTAL - ACM WALL PANEL MANUFACTURED BY - ALPOLIC / FR DRY JOINT SYSTEM COLOR: "BSX SILVER METALLIC"
- ACM-3 ENTRY PORTAL - ACM WALL PANEL MANUFACTURED BY - ALPOLIC / FR DRY JOINT SYSTEM COLOR: "WHITE"
- CF-1 PREFINISHED METAL CAP FLASHING COLOR: TO MATCH WALL BELOW
- CW-1 ALUM FRAME CURTAIN WALL SYSTEM - CLEAR INSULATED GLASS - "CAPPED" WITH ALUM COVER COLOR: CLEAR ANODIZED
- SF-1 STOREFRONT ALUMINUM WINDOW SYSTEM WITH CLEAR INSULATED GLASS COLOR: CLEAR ANODIZED
- PC-1 DECORATIVE PRECAST CONCRETE WALL PANEL COLOR: INTEGRAL COLORED CONC - SMALL AGGREGATE FINISH TEXTURE
- D-1 "EXTERIOR CAR DOOR" - ENTRY DOOR SYSTEM WITH ALUMINUM FRAME AND CLEAR INSULATED GLASS COLOR: CLEAR ANODIZED
- D-1A "AUTOMATIC" ENTRY DOOR SYSTEM WITH ALUMINUM FRAME AND CLEAR INSULATED GLASS COLOR: CLEAR ANODIZED
- D-2 "EXTERIOR MAN DOOR" - ENTRY DOOR SYSTEM WITH ALUMINUM FRAME AND CLEAR INSULATED GLASS COLOR: CLEAR ANODIZED
- D-3 NOT USED
- D-4 HIGH-SPEED COILING OH DOOR, ALUMINUM FRAMING WITH CLEAR POLY CARBONATE WINDOWS- FULL VIEW COLOR: CLEAR ANODIZED
- D-4A OH DOOR- ALUMINUM FRAMING WITH CLEAR INSULATED GLASS COLOR: CLEAR ANODIZED
- D-4B OH DOOR- PREFINISHED METAL WITH SOLID INSULATED PANELS COLOR: CLEAR ANODIZED
- LF-1 EXTERIOR LIGHT FIXTURE- WALL MOUNTED "DOWN LIGHT" DESIGN

PROPOSED NEW BUILDING FOR:

WALSER KIA

HIGHWAY 394
MINNETONKA, MINNESOTA

© COPYRIGHT 2022, PHILLIPS Architects & Contractors, Ltd.

PHILLIPS ARCHITECTS & CONTRACTORS, LTD.

401 North Third Street,
Suite 450
Minneapolis, MN 55401
Ph: (612) 868-1261
www.phillipsarchitects.com

I HEREBY CERTIFY THAT THIS PLAN, SPECIFICATION, OR REPORT WAS PREPARED BY ME OR UNDER MY DIRECT SUPERVISION AND THAT I AM A DULY LICENSED ARCHITECT UNDER THE LAWS OF THE STATE OF MINNESOTA.
David A. Phillips

DATE: LICENSE # 17387

ISSUE/REVISION:
2022 REVIEW

DRAWN BY:
CHECKED BY: DAF
PROJECT NO.:

EXTERIOR ELEVATIONS

A3.0



WALSER KIA WAYZATA
WAYZATA, MN



ChangeUp

937.293.7700 changupinc.com

These drawings convey design intent only to specify size, shape color, feature and proportion, and not to be used as fabrication drawings.

© 2022 ChangeUp

DATE **JUL '22**

SCALE	PROJECT NO.
N/A	KIA55

DRAWING TITLE
EXTERIOR RENDERING

DWG NO.



WALSER KIA WAYZATA
WAYZATA, MN



ChangeUp

937.293.7700 changupinc.com

These drawings convey design intent only to specify size, shape, color, feature and proportion, and not to be used as fabrication drawings.

© 2022 ChangeUp

DATE **JUL '22**

SCALE	PROJECT NO.
N/A	KIA55

DRAWING TITLE
INTERIOR RENDERING

DWG NO.

