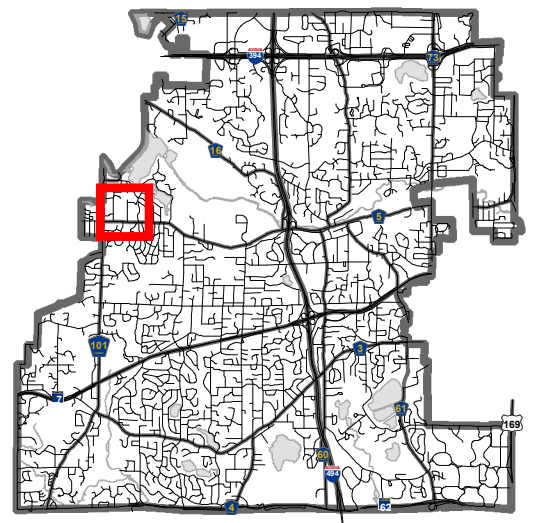


Location Map

Project: Groveland Elementary
Address: 17310 Minnetonka Blvd.

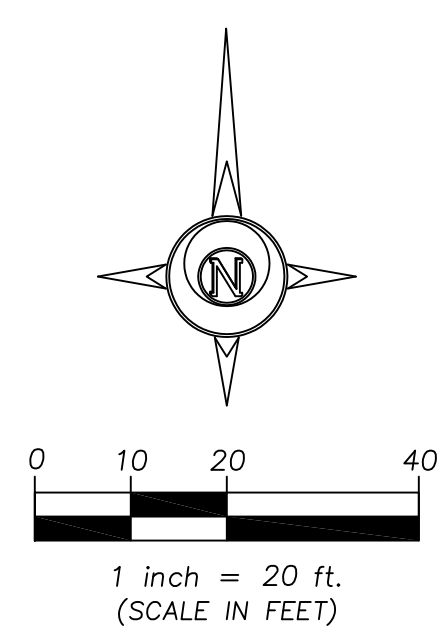


CERTIFICATION:

I hereby certify that this plan, specification, or report was prepared by me or under my direct supervision, and that I am a duly Licensed Land Surveyor under the laws of the State of Minnesota.

Craig E. Johnson, LS, CFedS
Minnesota License No. 44530

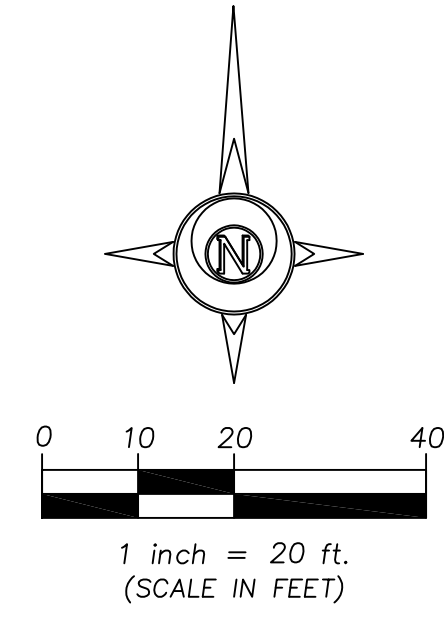
09/19/2016
Date



1 inch = 20 ft.
(SCALE IN FEET)



REVISIONS	DATE	INFO	DRAWN BY
	05/25/2016		Cody J.
			CHECKED BY
			Craig J.
			DATE
			09/19/2016
			PROJECT NO.
			CI6504
			SHEET NO.
			2

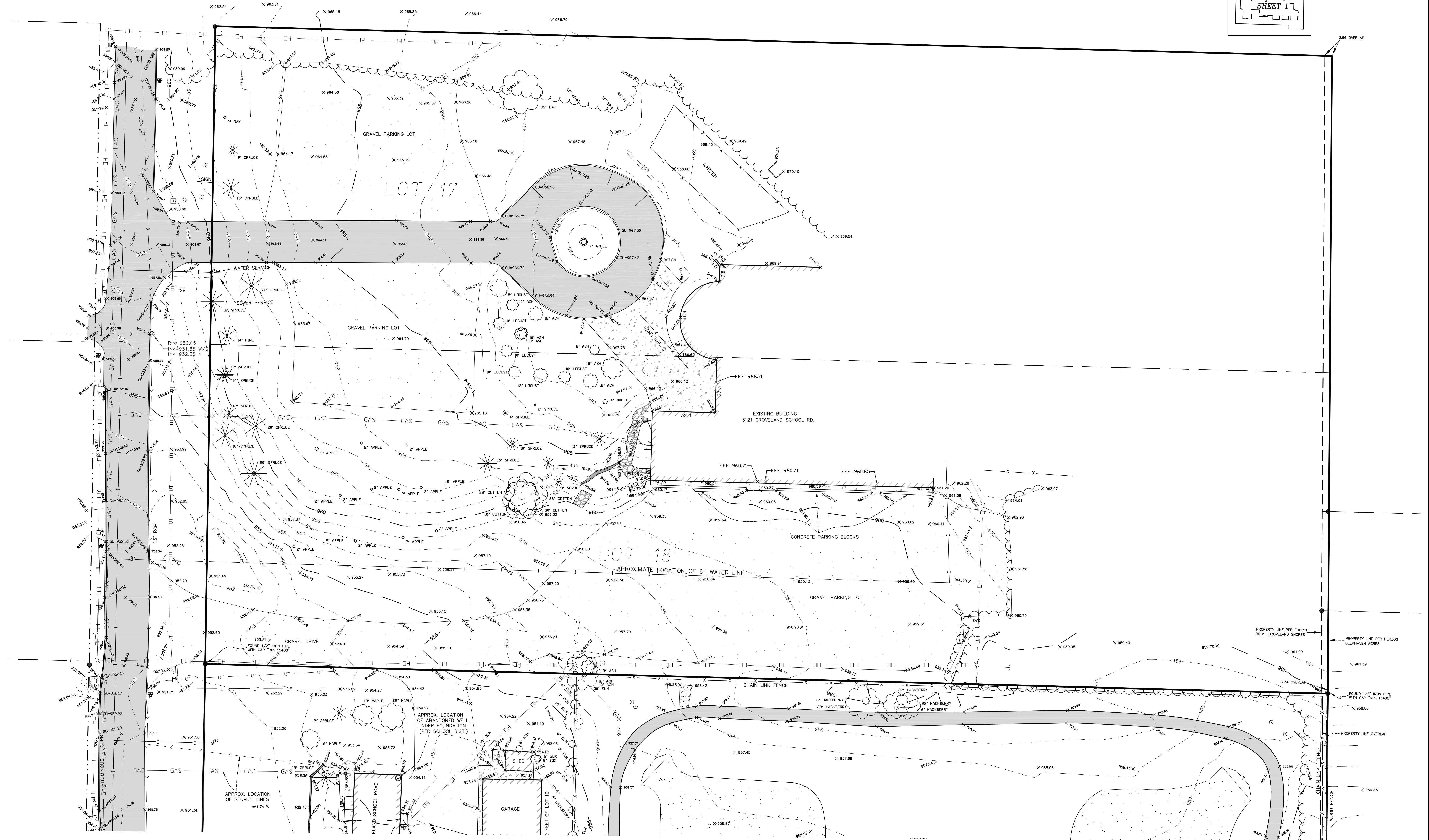
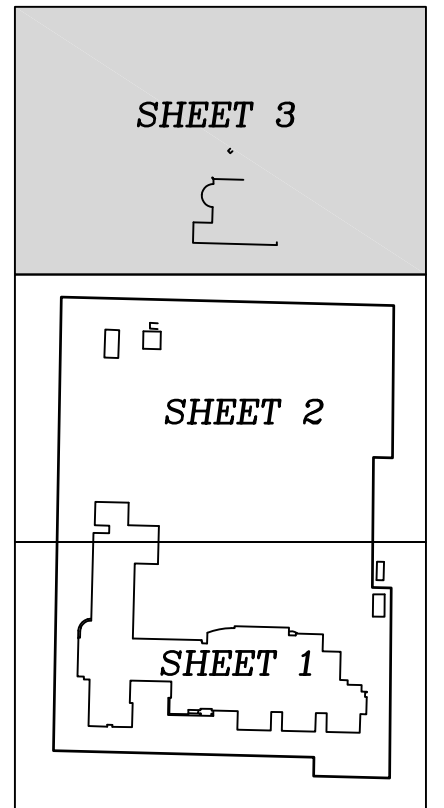


CERTIFICATION:
 I hereby certify that this plan, specification, or report was prepared by me or under my direct supervision, and that I am a duly Licensed Land Surveyor under the laws of the State of Minnesota.

Craig Johnson
 Craig E. Johnson, L.S., C.Fed.S.
 Minnesota License No. 44530

09/19/2016
 Date

SHEET KEY



REVISIONS	DATE	INFO	DRAWN BY
	05/25/2016		Cody J.
			CHECKED BY
			Craig J.
			DATE
			09/19/2016
			PROJECT NO.
			C16504
			SHEET NO.
			3

KEYED NOTES:

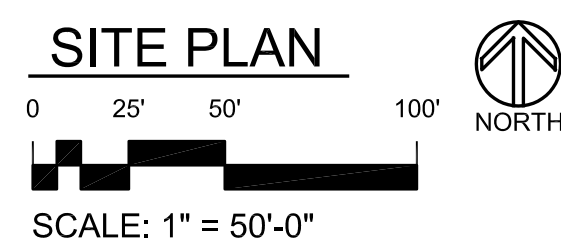
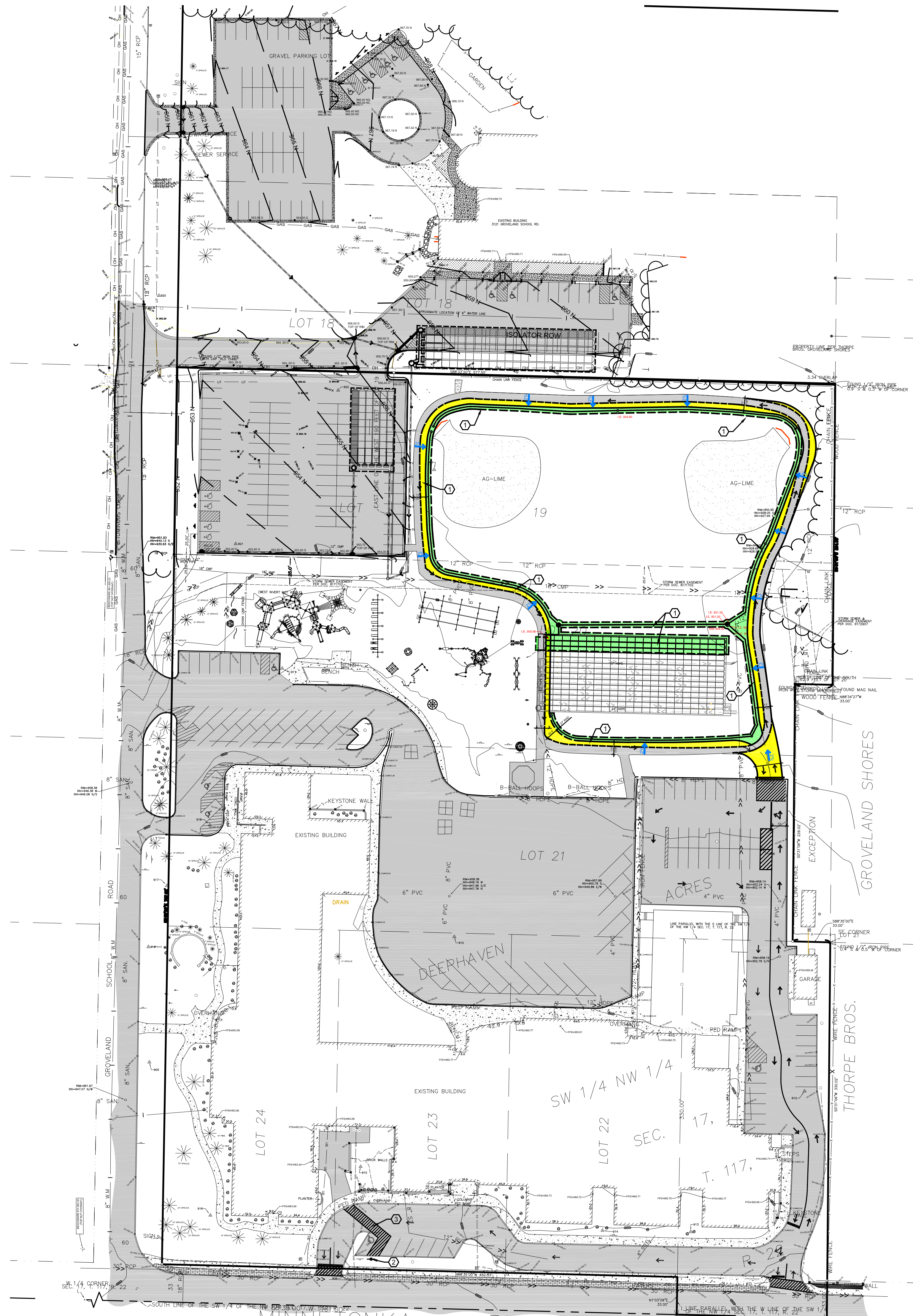
- ① 2023 PROPOSED PATH WIDENING FOR NEW DRIVE WITH 3 ADDED ROWS OF UNDERGROUND STORM CHAMBERS
- ② NEW "NO PARKING" SIGN AND POST.
- ③ PARKING LOTS AND DRIVES TO BE RESTRIPEDED AS SHOWN.

GROVELAND ELEMENTARY SCHOOL - PARKING SPACES

REGULAR	151
ADA	9
BUSES	12

ST. LUKE'S CHURCH - PARKING SPACES

REGULAR	77
ADA	8



**PRELIMINARY
 NOT FOR CONSTRUCTION**

Signature:

I HEREBY CERTIFY THAT THIS PLAN, SPECIFICATION,
 OR REPORT WAS PREPARED BY ME OR UNDER MY
 DIRECT SUPERVISION AND THAT I AM A
 DULY LICENSED PROFESSIONAL ENGINEER UNDER THE
 LAWS OF THE STATE OF MINNESOTA.

SIGNATURE: *Clifford W. Burman*
 TYPED OR PRINTED NAME: CLIFFORD W. BURMAN
 DATE: 11/02/22 REGISTRATION NO.: 17294

Issues and revisions:

ISSUE LEVEL / REVISION:	DATE:	No.:
LEVEL	DATE	

THIS LINE SCALES 1" ON FULL SIZE SHEETS

Client:

**MINNETONKA
 PUBLIC
 SCHOOLS**
 5621 COUNTY ROAD 101
 MINNETONKA, MINNESOTA 55345

**GROVELAND ELEMENTARY
 AND
 ST. LUKE'S CHURCH**
 17310 MINNETONKA BLVD
 MINNETONKA, MINNESOTA 55345

Project title:
**2023
 PATH WIDENING
 FOR DRIVE**
 17310 MINNETONKA BLVD
 MINNETONKA, MINNESOTA 55345

Sheet content:

SITE PLAN

DATE:	11-10-22
CLIENT PROJECT No.:	
INSPEC PROJECT No.:	215476
PROJECT MGR:	CB
DRAWN BY:	BT
CHECKED BY:	BB

Sheet No.:

SHEET SIZE: 24x36
 11/02/2022 1:18 PM BURMAN.TW/HT
 H:\Pavement\School Districts\Design\M - Z\Minnetonka\2023\Groveland ES Car Stacking Running Path cont'd from 2022\Drawings\SITE UTILITIES DRAWINGS\Drawings (AutoCAD Arch)\S-U-Inspeco-Curent Working Drawings\SITE UTILITY 9-22-22.dwg

GENERAL NOTES:

1. LOCATIONS AND SIZES OF ALL UNDERGROUND UTILITIES SHOWN ARE APPROXIMATE ONLY. VERIFY ALL UTILITIES. CONTRACTOR RESPONSIBLE FOR REPAIR TO ANY DAMAGED UNDERGROUND UTILITIES, INCLUDING BUT NOT LIMITED TO, LAWN IRRIGATION SYSTEMS AND DRAIN TILE.
2. CONTRACTOR RESPONSIBLE FOR LOCATING AND PROTECTING ALL SITE UTILITIES. CONTACT GOPHER STATE ONE CALL AND PRIVATE LOCATOR PRIOR TO ANY DEMOLITION/EXCAVATION.
3. ALL CONSTRUCTION MUST COMPLY WITH APPLICABLE ORDINANCES.
4. CONTRACTOR SHALL OBTAIN AND PAY FOR ALL CONSTRUCTION PERMITS.
5. PROTECT EXISTING FACILITIES AND VEGETATION WHICH ARE TO REMAIN. RESTORE ALL DISTURBED AREAS, INCLUDING, BUT NOT LIMITED TO UTILITIES, IRRIGATION SYSTEMS, PAVEMENT, TREES LANDSCAPING, AND GRASSLAND/LAWN AREAS. GRASSLAND/LAWN AREAS TO BE DECOMPACTED AND RESTORED WITH 6" TOPSOIL, FERTILIZER AND STAKED SOD.
6. CONTRACTOR TO SWEEP SITE PAVEMENTS AND ADJACENT STREETS AT CONSTRUCTION VEHICLE ACCESS POINTS EACH WORK DAY WITH PICK UP SWEEPER OR EQUAL TO REMOVE ANY DEBRIS.
7. CONTRACTOR SHALL BE RESPONSIBLE FOR EROSION CONTROL THROUGHOUT PROJECT, INCLUDING, BUT NOT LIMITED TO, STORM WATER STRUCTURES INLET PROTECTION.
8. ALL DIMENSIONS AND OR QUANTITIES ARE APPROXIMATE. THE CONTRACTOR IS RESPONSIBLE FOR VERIFYING.
9. CONTRACTOR TO PROVIDE ALL CONSTRUCTION STAKING.

KEYED NOTES:

- 1 NEW BITUMINOUS PAVEMENT, APPROX. 670 SQ. YDS. SEE DETAIL 3/C4.
- 2 4" BITUMINOUS PAVEMENT RECLAIM/RECONSTRUCT. PAVE FINAL LIFT WITH NEW PAVEMENT, APPROX. 910 SQ. YDS. SEE DETAIL 4/C4.
- 3 MATCH NEW BITUMINOUS PAVEMENT TO EXISTING.
- 4 INSTALL NEW 23" VBG6 (2 PANEL) ALUMINUM BARRIER GATE, ITEM #02324. SEE DETAIL 8/C4.
- 5 NEW UNDERGROUND STORM CHAMBERS, 3 ROWS WITH 22 CHAMBERS PER ROW, 66 TOTAL. SEE PLAN SHEET C5.
- 6 NEW 48" CONCRETE MONOLITHIC CATCH BASIN/MANHOLE #1, SEE CB/MH SCHEDULE AND DETAIL 5/C4.
- 7 NEW 48" CONCRETE MONOLITHIC CATCH BASIN/MANHOLE #2, SEE CB/MH SCHEDULE AND DETAIL 5/C4.
- 8 NEW 24" DIA. NYLOPLAST MANHOLE #3, SEE CB/MH SCHEDULE AND DETAIL 10/C4.
- 9 NEW 24" DIA. NYLOPLAST MANHOLE #4, SEE CB/MH SCHEDULE AND DETAIL 10/C4.
- 10 NEW 24" DIA. NYLOPLAST MANHOLE #5, SEE CB/MH SCHEDULE AND DETAIL 10/C4.
- 11 NEW 8" DIA. HDPE PIPE, APPROX. 7 L.F., SEE DETAIL 9/C4.
- 12 NEW 4" DIA. SLOTTED HDPE PIPE, APPROX. 525 L.F., SEE DETAIL 9/C4.
- 13 NEW 4" DIA. SLOTTED HDPE PIPE, APPROX. 330 L.F., SEE DETAIL 9/C4.
- 14 NEW 4" DIA. SLOTTED HDPE PIPE, APPROX. 180 L.F., SEE DETAIL 9/C4.
- 15 NEW 8" DIA. HDPE PIPE, APPROX. 145 L.F., SEE DETAIL 6/C4.
- 16 NEW 4" DIA. CLEANOUT, SEE DETAIL 9/C4.
- 17 INSTALL NEW 30' CANTILEVERED GATE, SEE DETAIL 11/C4.
- 18 STRIPE 2 NEW PARKING SPACES AND CROSSHATCHED AREA.
- 19 TOP OF NEW PAVEMENT ELEVATION TO MATCH TOP OF EXISTING PAVEMENT ELEVATION AT THIS LOCATION +/-0.1'.
- 20 RELOCATED TREE.

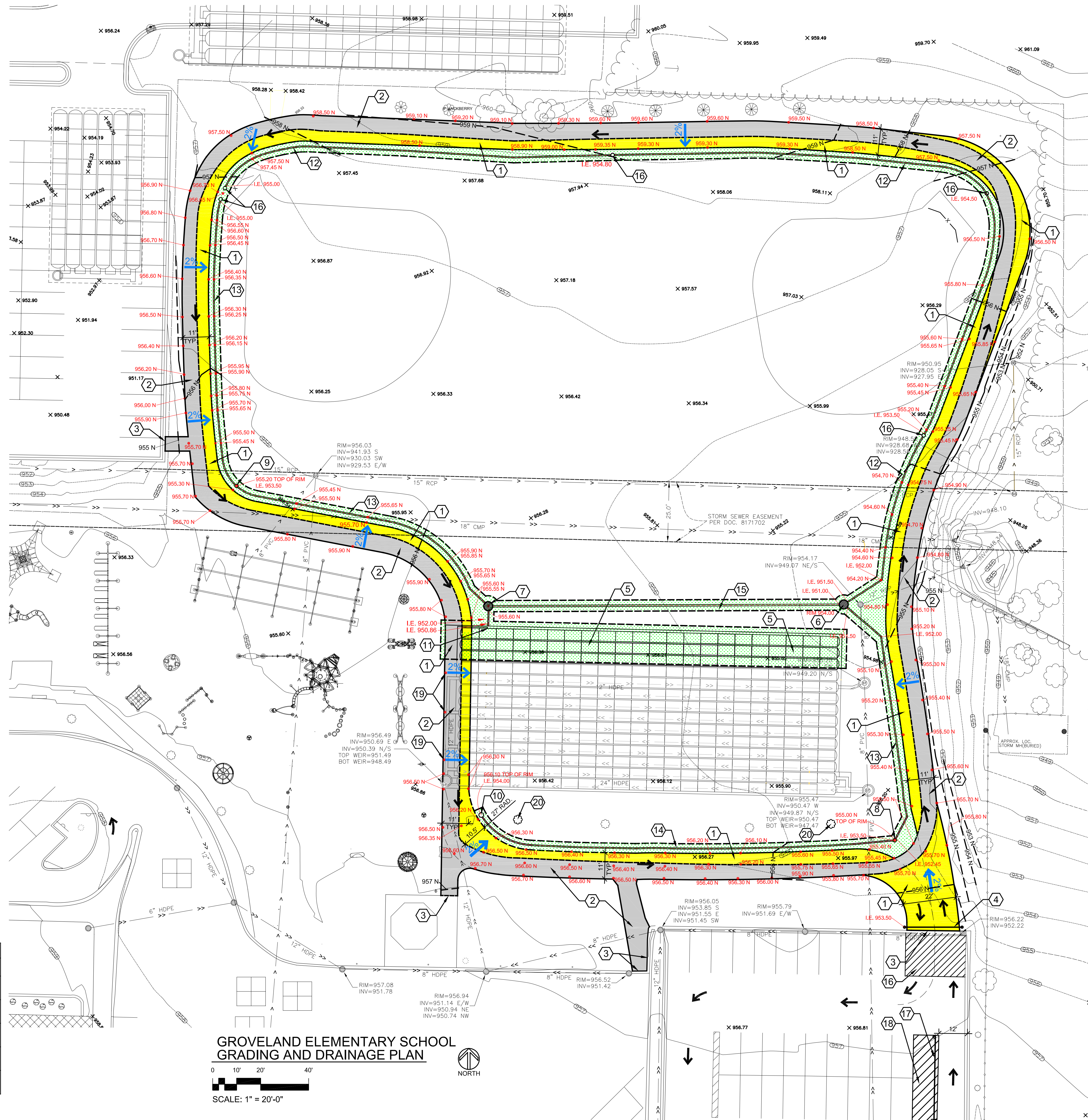
CONTRACTOR IS RESPONSIBLE FOR VERIFYING ALL QUANTITIES

- NEW BITUMINOUS PAVEMENT
- EXISTING BITUMINOUS PAVEMENT TO RECLAIM/RECONSTRUCT
- APPROXIMATE DISTURBED GRASS AREA
- DRAINAGE DIRECTION AND SURFACE SLOPE
- VEHICLE TRAFFIC DIRECTION ARROW STRIPING (WHITE)
- SPOT ELEVATION AND SYMBOL

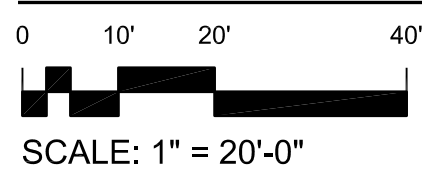
"N" DENOTES NEW TOP OF GRADE ELEVATION
ALL OTHER ELEVATIONS ARE EXISTING UNLESS NOTED OTHERWISE

CATCH BASIN/MANHOLE SCHEDULE

MH #	TYPE	INLET FRAME/GRATE	RIM ELEV.	INV. ELEV. IN	INV. ELEV. OUT	INV. ELEV. BOTTOM
MH #1	48" DIA. CONC. MONOLITHIC	NEENAH R-2270 WITH R-2585A FRAME AND TYPE C RADIAL GRATE AND ADS FLEXSTORM PURE PERMANENT INLET PROTECTION	954.10	951.50	951.00	948.00
MH #2	48" DIA. CONC. MONOLITHIC	NEENAH R-2270 WITH R-2585A FRAME AND TYPE C RADIAL GRATE AND ADS FLEXSTORM PURE PERMANENT INLET PROTECTION	956.00 TOP OF EXISTING GRADE	952.00	950.86	947.86
MH #3	NEW 24" DIA. NYLOPLAST	HEAVY DUTY INLET FRAME/GRATE	955.50	953.20	953.20	952.70
MH #4	NEW 24" DIA. NYLOPLAST	HEAVY DUTY INLET FRAME/GRATE	955.20	953.20	953.20	952.70
MH #5	NEW 24" DIA. NYLOPLAST	HEAVY DUTY INLET FRAME/GRATE	956.10	954.00	954.00	953.50



GROVELAND ELEMENTARY SCHOOL GRADING AND DRAINAGE PLAN



Consultants:

Signature:

I HEREBY CERTIFY THAT THIS PLAN, SPECIFICATION, OR REPORT WAS PREPARED BY ME OR UNDER MY DIRECT SUPERVISION AND THAT I AM AN ONLY LICENSED PROFESSIONAL ENGINEER UNDER THE LAWS OF THE STATE OF MINNESOTA.

Signature: *Clifford W. Bodman*
Typed or Printed Name: CLIFFORD W. BODMAN
Date: 10/13/22 Registration No.: 17594

Issues and revisions:

ISSUE LEVEL / REVISION:	DATE:	No.:
LEVEL	DATE	

THIS LINE SCALES 1" ON FULL SIZE SHEETS

Client:
**MINNETONKA
PUBLIC
SCHOOLS**

5621 COUNTY ROAD 101
MINNETONKA, MINNESOTA 55345

**GROVELAND
ELEMENTARY**

17310 MINNETONKA BLVD
MINNETONKA, MINNESOTA 55345

Project title:

**2023
PATH WIDENING
FOR DRIVE**

17310 MINNETONKA, BLVD
MINNETONKA, MINNESOTA 55345

Sheet content:
**GROVELAND ELEMENTARY SCHOOL
GRADING AND DRAINAGE PLAN**

DATE: 7-20-22
CLIENT PROJECT No.:
INSPEC PROJECT No.: 215476
PROJECT MGR: CB
DRAWN BY: BT
CHECKED BY: BB

Sheet No.:

C3