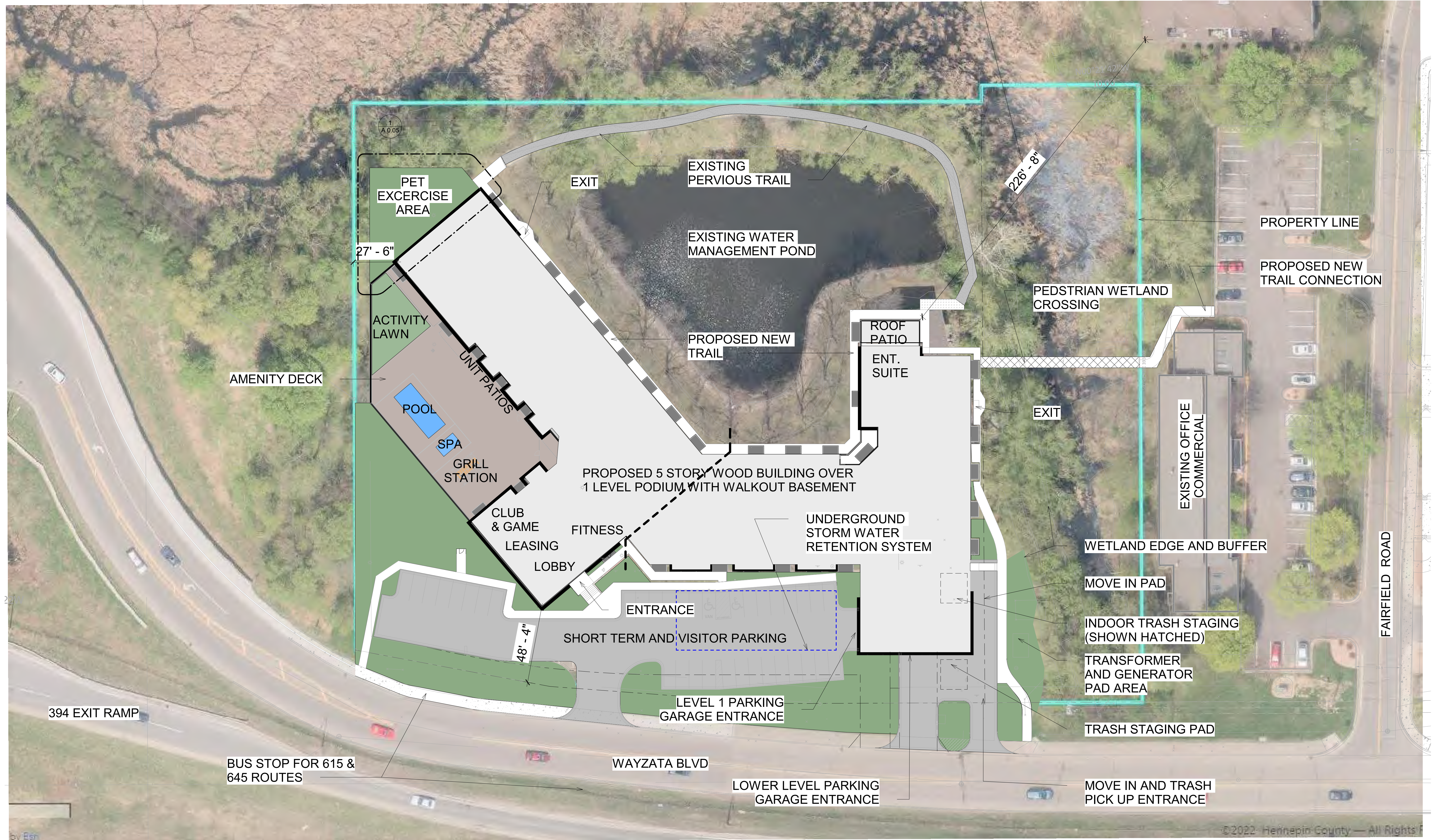


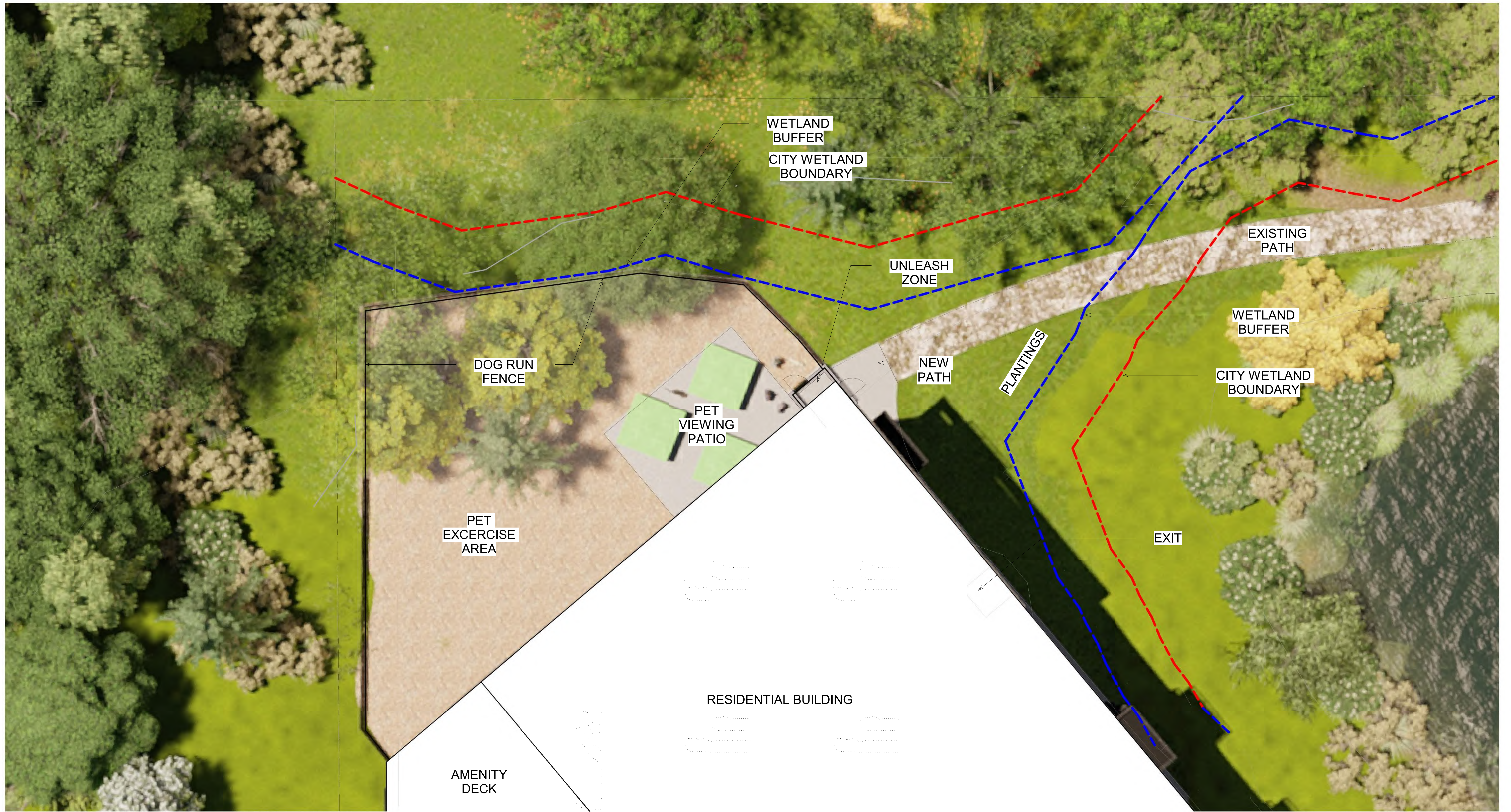
DISTANCE TO EXISTING CONDOMINIUM



© 2022 Hennepin County — All Rights Reserved

6/9/2023 12:21:21 PM

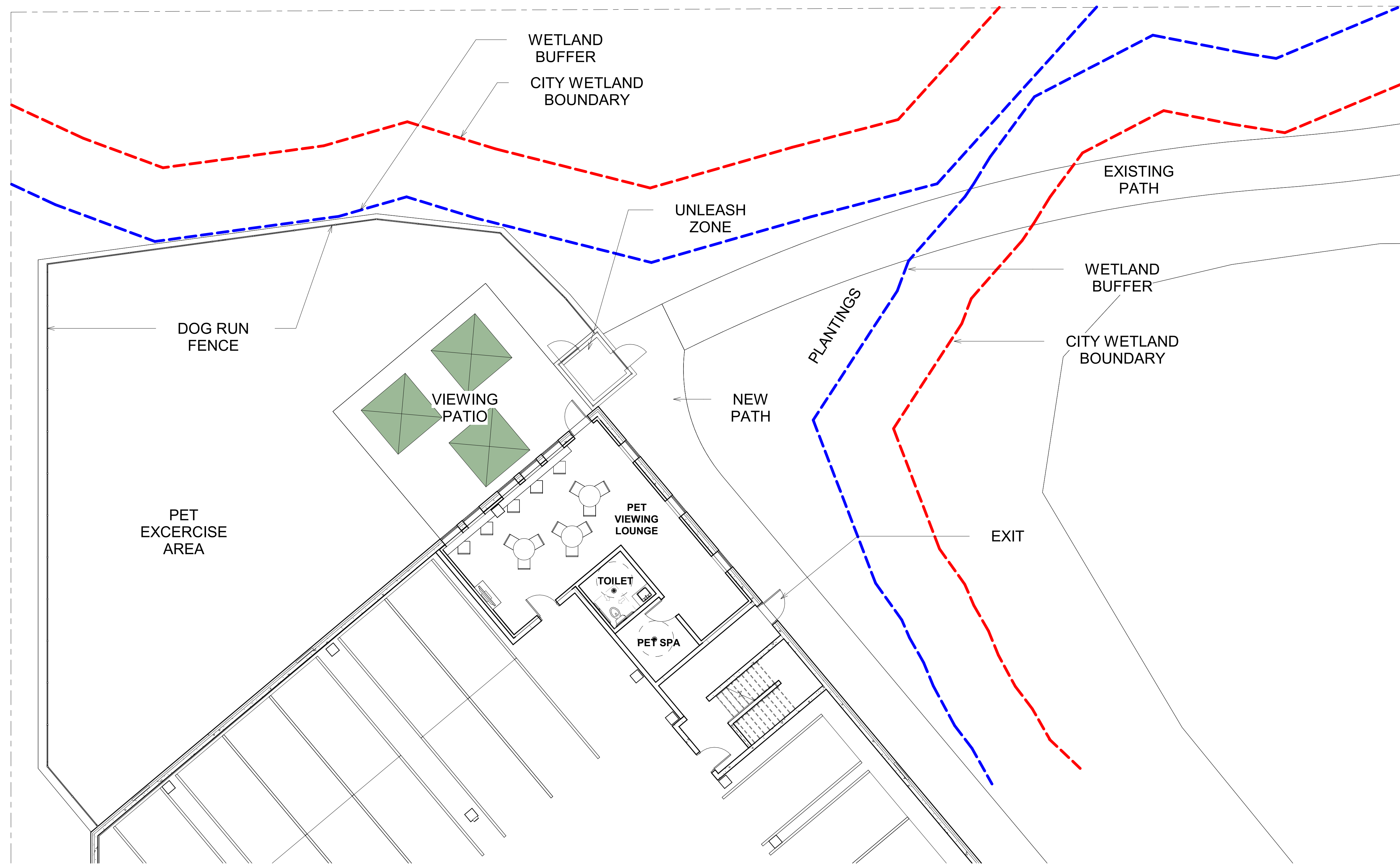




① SITE PLAN - ENLARGED DOG RUN  
1/8" = 1'-0"

6/9/2023 12:21:25 PM





① ENLARGED PLAN AT PET VIEWING LOUNGE  
1/8" = 1'-0"

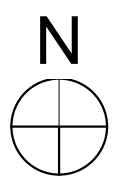
6/9/2023 12:21:25 PM





6/9/2023 12:21:25 PM

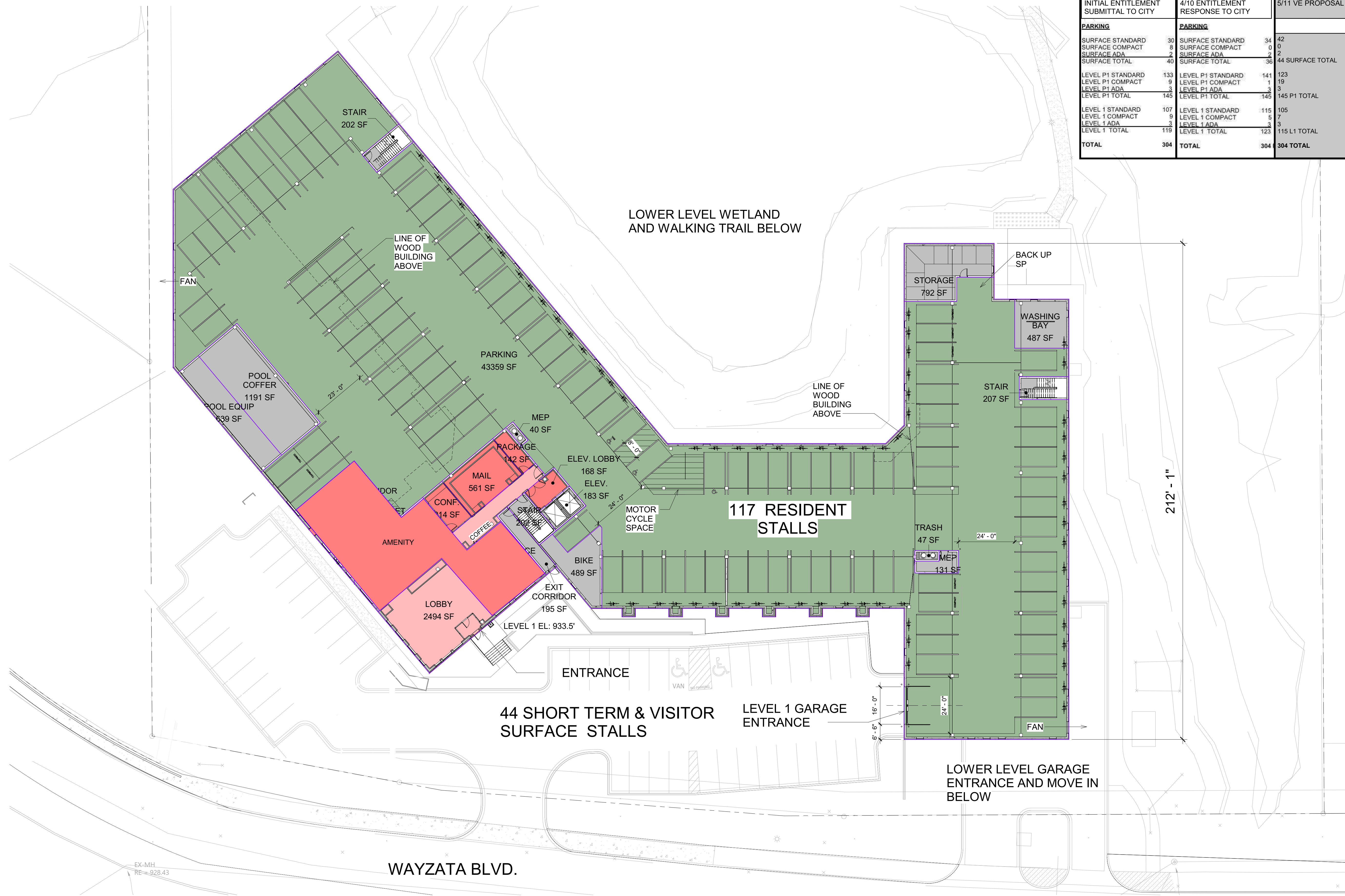




6/9/2023 12:21:36 PM



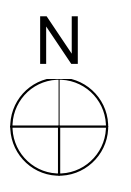
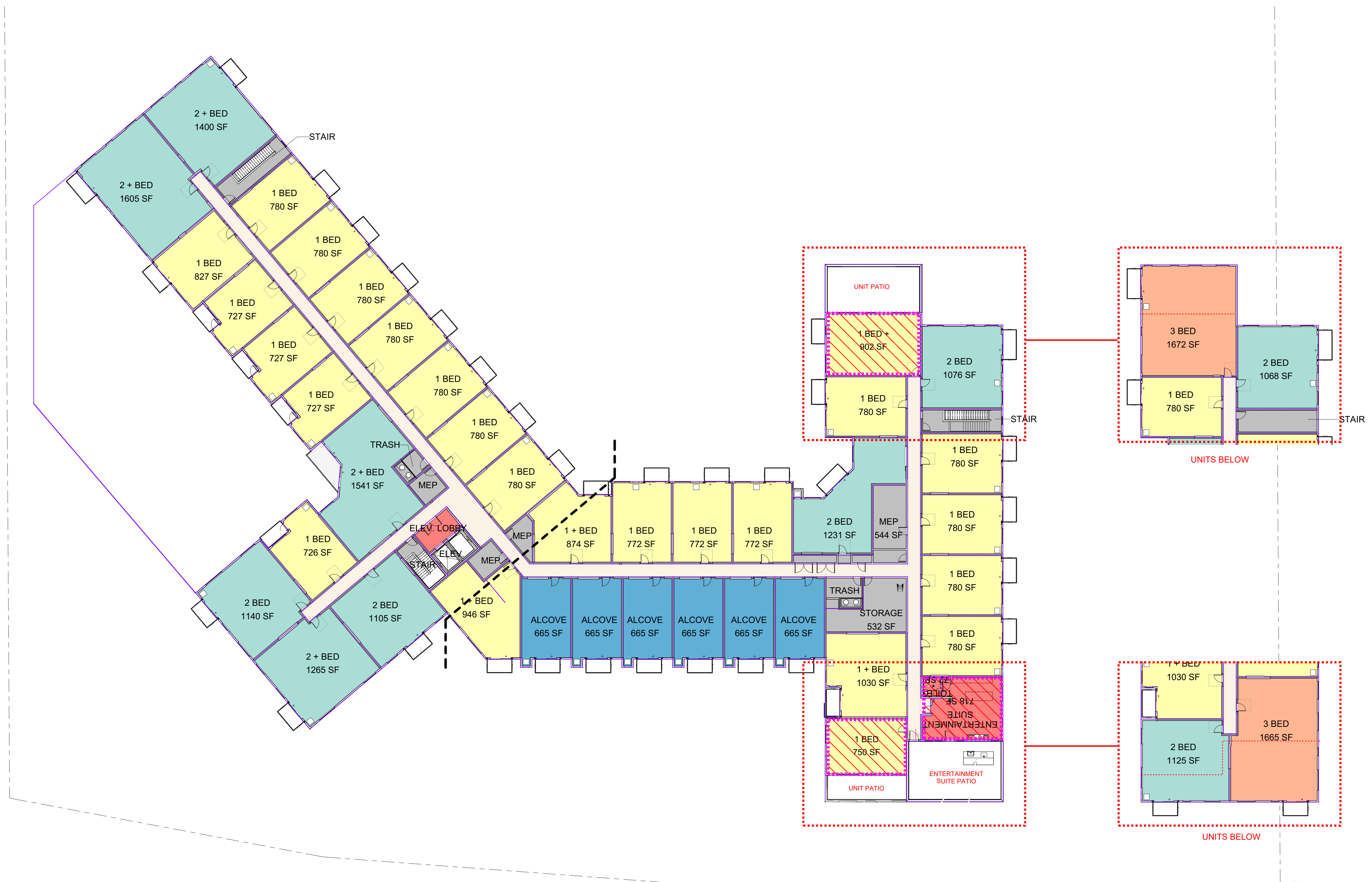
INITIAL ENTITLEMENT SUBMITTAL TO CITY	4/10 ENTITLEMENT RESPONSE TO CITY	5/11 VE PROPOSAL	6/8 REDESIGN
<b>PARKING</b>			
SURFACE STANDARD 30	SURFACE STANDARD 34	42	42
SURFACE COMPACT 8	SURFACE COMPACT 0	0	0
SURFACE ADA 2	SURFACE ADA 2	2	2
SURFACE TOTAL 40	SURFACE TOTAL 36	44 SURFACE TOTAL	44 SURFACE TOTAL
<b>LEVEL 1</b>			
LEVEL P1 STANDARD 133	LEVEL P1 STANDARD 141	123	121
LEVEL P1 COMPACT 9	LEVEL P1 COMPACT 1	19	19
LEVEL P1 ADA 3	LEVEL P1 ADA 3	3	3
LEVEL P1 TOTAL 145	LEVEL P1 TOTAL 145	145 P1 TOTAL	143 P1 TOTAL
LEVEL 1 STANDARD 107	LEVEL 1 STANDARD 115	105	107
LEVEL 1 COMPACT 9	LEVEL 1 COMPACT 5	7	7
LEVEL 1 ADA 3	LEVEL 1 ADA 3	3	3
LEVEL 1 TOTAL 119	LEVEL 1 TOTAL 123	115 L1 TOTAL	117 L1 TOTAL
<b>TOTAL 304</b>	<b>TOTAL 304</b>	<b>304 TOTAL</b>	<b>304 TOTAL</b>



6/9/2023 12:21:44 PM







6/1/2023 9:47:34 AM





6/5/2023 5:30:34 PM

**DORAN**  
ARCHITECTURE

**MARSH RUN II REDEVELOPMENT**

11816 Wayzata Blvd, Minnetonka

EXTERIOR RENDERING

**A 3.00**





6/5/2023 5:30:34 PM

## MARSH RUN II REDEVELOPMENT

11816 Wayzata Blvd, Minnetonka

EXTERIOR RENDERING

**A 3.03**





6/5/2023 5:30:34 PM