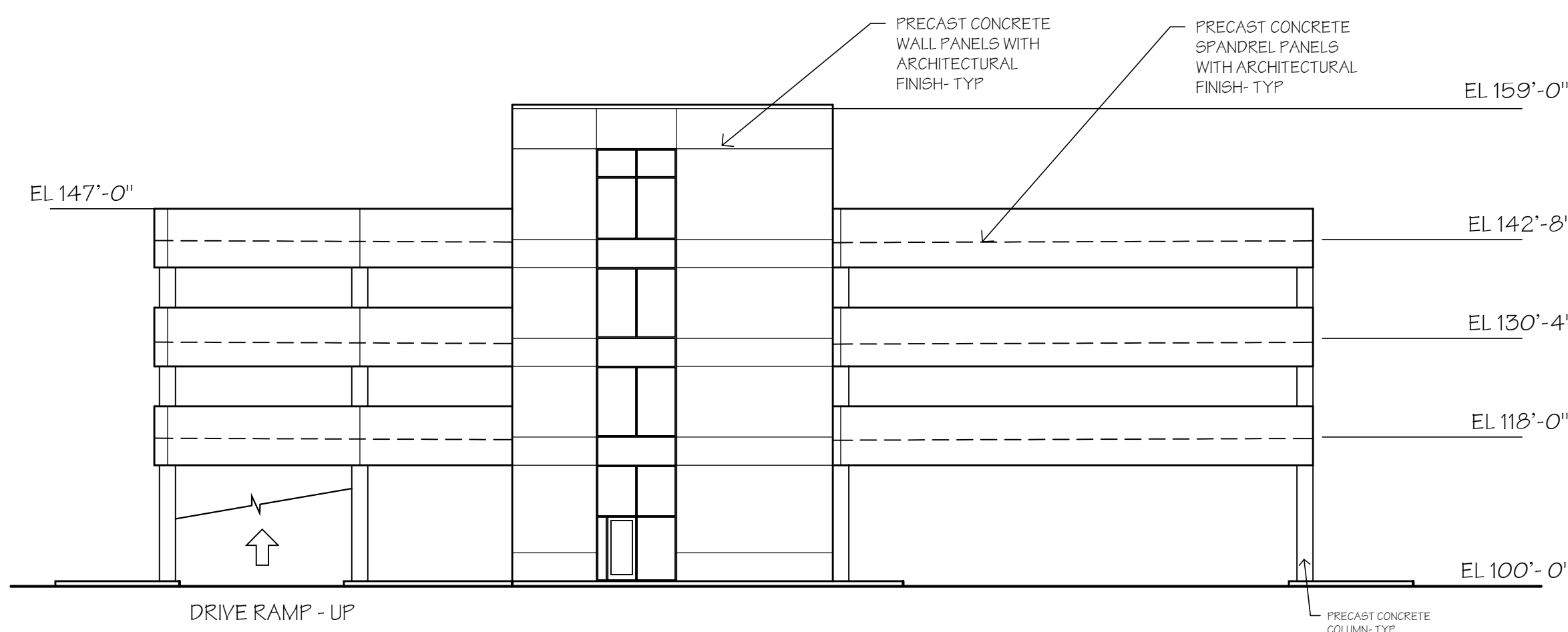
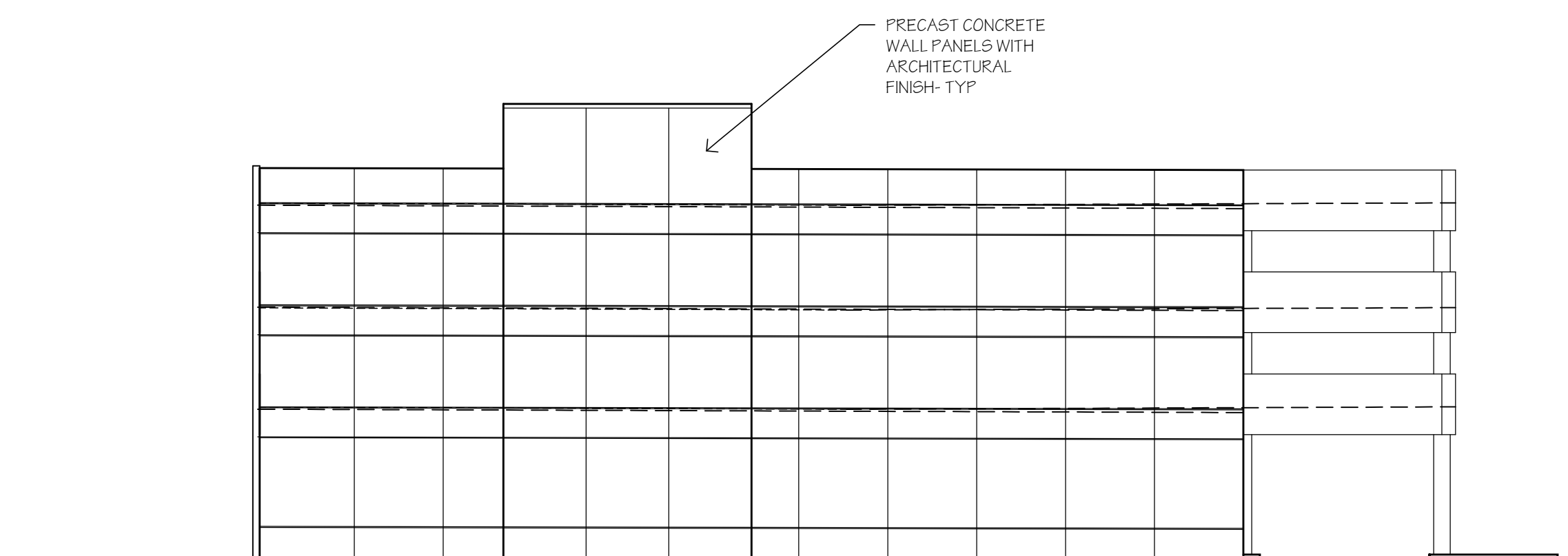


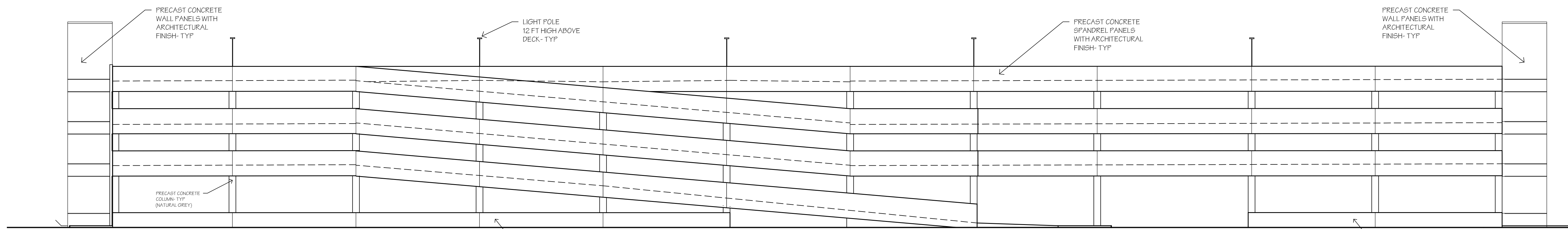
4 EAST ELEVATION
 1/16" = 1'-0"



2 SOUTH ELEVATION
 1/16" = 1'-0"



3 NORTH ELEVATION
 1/16" = 1'-0"



1 WEST ELEVATION
 1/16" = 1'-0"

2023 NEW BUILDING FOR:
WALSER KIA
 WAYZATA BLVD
 MINNETONKA, MINNESOTA

©COPYRIGHT 2023 PHILLIPS Architects & Contractors, Ltd.

PHILLIPS ARCHITECTS & CONTRACTORS, LTD.

401 North Third Street
 Suite 450
 Minneapolis, MN 55401
 Ph. (612) 868-1261
 E-mail: philips@phillipsarchitects.com

HEREBY CERTIFY THAT THIS PLAN, SPECIFICATION OR REPORT WAS PREPARED BY ME OR UNDER MY DIRECT SUPERVISION AND THAT I AM A DULY LICENSED ARCHITECT UNDER THE LAWS OF THE STATE OF MINNESOTA.
 David A. Phillips

DATE: REG. NO. 17387
 ISSUE/REVISION:
 7/24/2023 REVIEW

DRAWN BY:
 CHECKED BY: DAF
 PROJECT NO.:

RAMP ELEVATIONS

A3.8