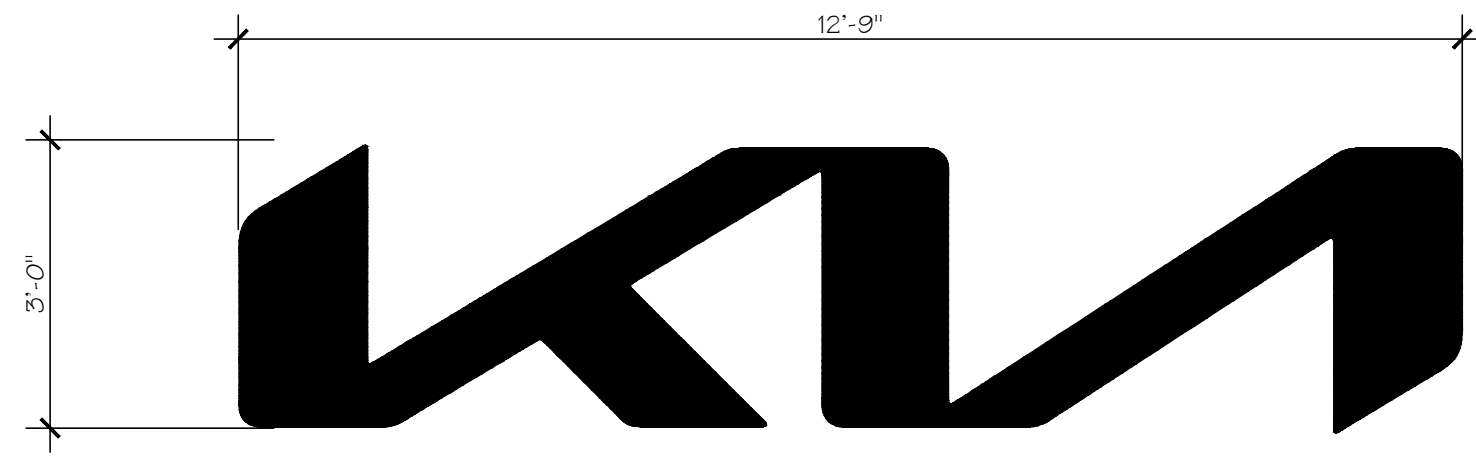


EG-1 FRONT LOGO (38.25 SF)  
THE EG-1 FRONT LOGO IS FABRICATED ALUMINUM PAINTED KIA METALLIC SILVER WITH 2" DEEP ALUMINUM RETURNS AND BACKLIT.

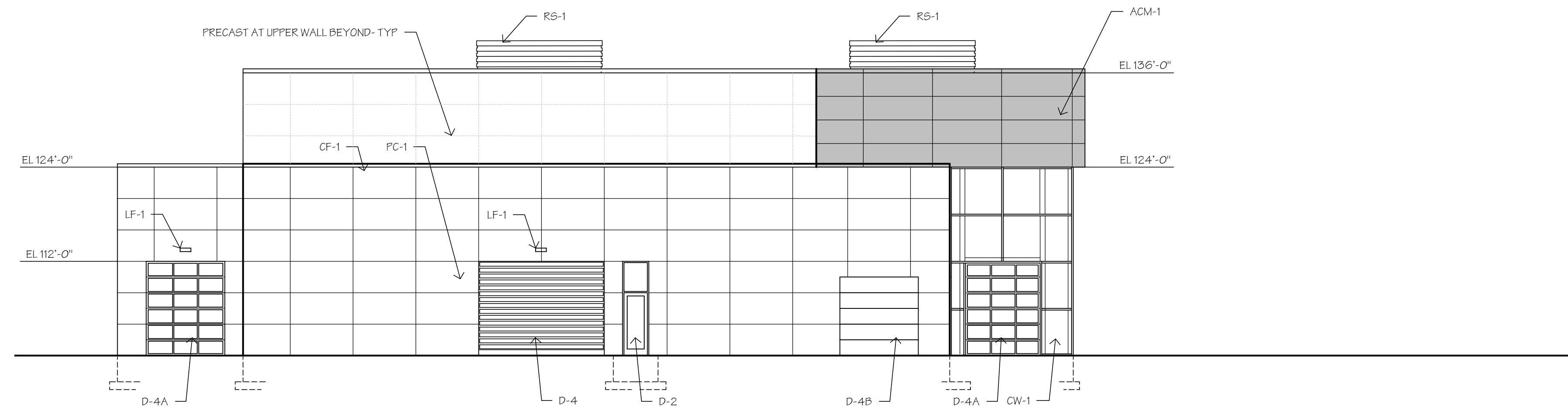
EG-2 SIDE LOGO (38.25 SF)  
THE EG-2 SIDE LOGO IS FABRICATED ALUMINUM PAINTED KIA METALLIC SILVER WITH 2" DEEP ALUMINUM RETURNS AND BACKLIT.

EG-3 WALSER SIGN (26 SF)  
THE EG-3 WALSER SIGN IS AN INTERNALLY ILLUMINATED CAN SIGN. THE FACE IS A METALLIC SILVER PERFORATED VNY. THAT WILL ILLUMINATE WHITE AT NIGHT. IT HAS 3" DEEP ALUMINUM RETURNS THAT ARE FLUSH MOUNTED TO THE FACADE.

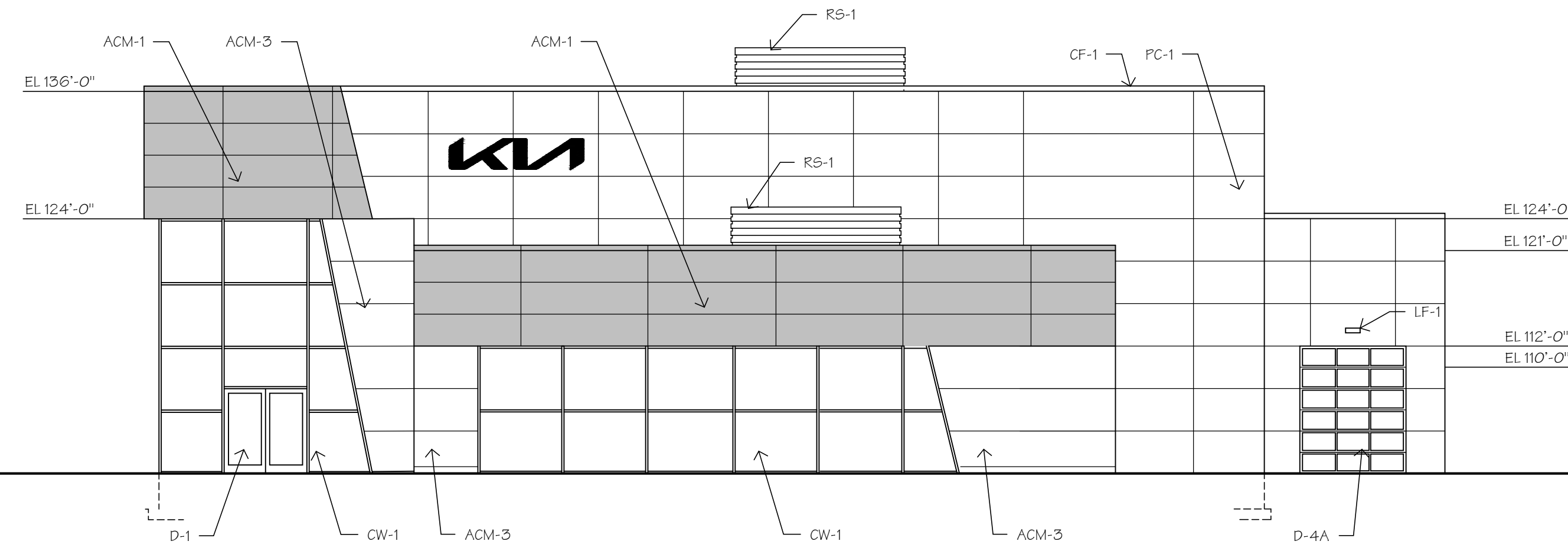
EG-4 SERVICE SIGN (26.5 SF)  
THE EG-4 SERVICE SIGN IS AN INTERNALLY ILLUMINATED CAN SIGN. THE FACE IS A METALLIC SILVER PERFORATED VNY. THAT WILL ILLUMINATE WHITE AT NIGHT AND HAS 3" DEEP ALUMINUM RETURNS THAT ARE FLUSH MOUNTED TO THE FACADE.



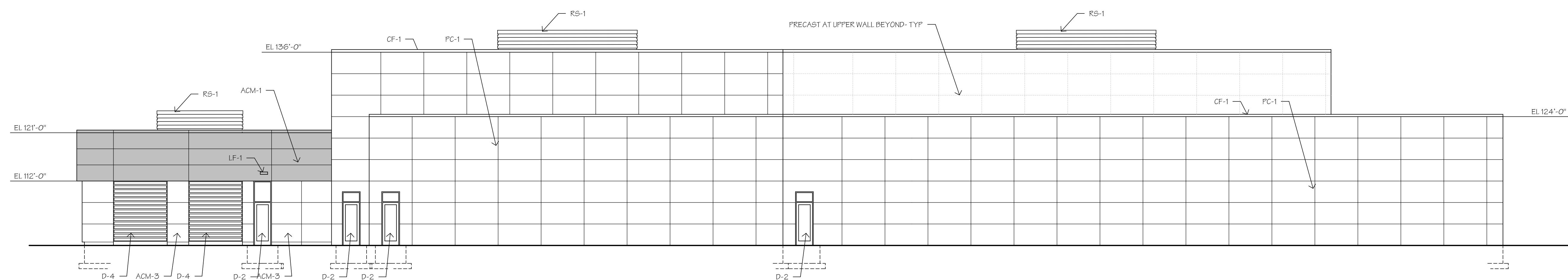
5 BUILDING SIGNS  
A3.0 1/2"=1'-0"



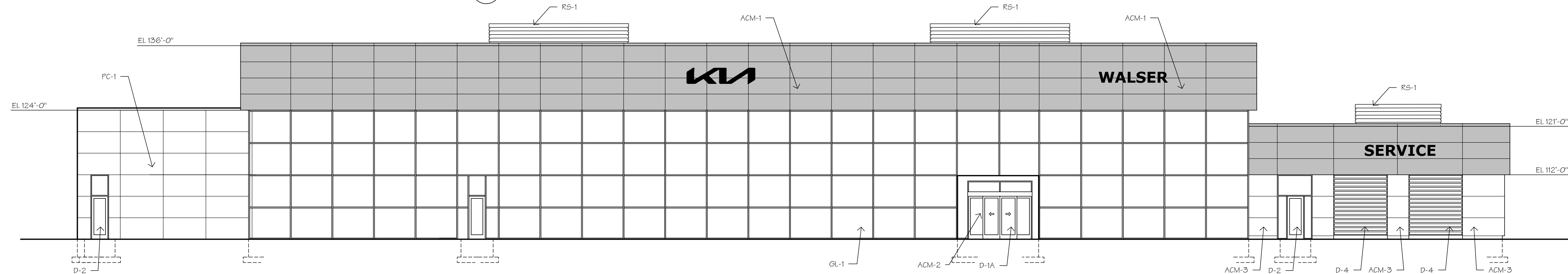
4 WEST ELEVATION  
A3.0 3/32"=1'-0"



3 EAST ELEVATION  
A3.0 3/32"=1'-0"



2 NORTH ELEVATION  
A3.0 3/32"=1'-0"



1 SOUTH ELEVATION  
A3.0 3/32"=1'-0"

KEY

- ACM-1 ACM WALL PANEL - PREFINISHED MANUFACTURED BY - ALPOLIC / FR DRY JOINT SYSTEM COLOR: "TOB BLACK"
- ACM-2 ENTRY PORTAL - ACM WALL PANEL MANUFACTURED BY - ALPOLIC / FR DRY JOINT SYSTEM COLOR: "BOX SILVER METALLIC"
- ACM-3 ACM WALL PANEL MANUFACTURED BY - ALPOLIC / FR DRY JOINT SYSTEM COLOR: SIMILAR TO BENJAMIN MOORE - COVENTRY GRAY
- CF-1 PREFINISHED METAL CAP FLASHING COLOR: TO MATCH WALL BELOW
- CW-1 ALUM FRAME CURTAIN WALL SYSTEM - CLEAR INSULATED GLASS - "CAPPED" WITH ALUM COVER COLOR: CLEAR ANODIZED
- SF-1 STOREFRONT ALUMINUM WINDOW SYSTEM WITH CLEAR INSULATED GLASS COLOR: CLEAR ANODIZED
- PC-1 DECORATIVE PRECAST CONCRETE WALL PANEL COLOR: INTEGRAL COLORED CONC - TO MATCH BENJAMIN MOORE - COVENTRY GRAY SMALL AGGREGATE FINISH TEXTURE
- D-1 "EXTERIOR CAR DOOR" - ENTRY DOOR SYSTEM WITH ALUMINUM FRAME AND CLEAR INSULATED GLASS COLOR: CLEAR ANODIZED
- D-1A "AUTOMATIC" ENTRY DOOR SYSTEM WITH ALUMINUM FRAME AND CLEAR INSULATED GLASS COLOR: CLEAR ANODIZED
- D-2 "EXTERIOR MAN DOOR" - ENTRY DOOR SYSTEM WITH ALUMINUM FRAME AND CLEAR INSULATED GLASS COLOR: CLEAR ANODIZED
- D-3 NOT USED
- D-4 HIGH-SPEED COILING OH DOOR, ALUMINUM FRAMING WITH CLEAR POLYCARBONATE WINDOWS - FULL VIEW COLOR: CLEAR ANODIZED
- D-4A OH DOOR - ALUMINUM FRAMING WITH CLEAR INSULATED GLASS COLOR: CLEAR ANODIZED
- D-4B OH DOOR - PREFINISHED METAL WITH SOLID INSULATED PANELS COLOR: CLEAR ANODIZED
- LF-1 EXTERIOR LIGHT FIXTURE - WALL MOUNTED "DOWN LIGHT" DESIGN
- RS-1 PREFINISHED METAL ROOF SCREEN WITH HORIZONTAL "RIBBED" PROFILE COLOR: DARK GREY

2023 NEW BUILDING FOR:

**WALSER KIA**  
WAYZATA BLVD  
MINNETONKA, MINNESOTA

©COPYRIGHT 2023 PHILLIPS Architects & Contractors, Ltd.

**PHILLIPS ARCHITECTS & CONTRACTORS, LTD.**

401 North Third Street  
Suite 450  
Minneapolis, MN 55401  
Ph: (612) 868-1261  
E-mail: dphillips@phillipsarchitects.com

I HEREBY CERTIFY THAT THIS PLAN, SPECIFICATION, OR REPORT WAS PREPARED BY ME OR UNDER MY DIRECT SUPERVISION AND THAT I AM A DULY LICENSED ARCHITECT UNDER THE LAWS OF THE STATE OF MINNESOTA.  
David A. Phillips

DATE: REG. NO. 17387

ISSUE/REVISION:  
3/6/2023 ZONING  
4/29/2023 SUBMITTAL REV

DRAWN BY: DAP  
CHECKED BY: DAP  
PROJECT NO.:

**EXTERIOR ELEVATIONS**

**A3.0**