

Ridgedale: A Vision for 2035

Southwest Sector

City of Minnetonka



Tonight's Meeting Agenda:

7:00 – Welcome and Introductions

- *Barbara Raye - Center for Policy, Planning and Performance*
- *Julie Wischnack - Community Development Director*
- *Loren Gordon - City Planner*
- *Mark Hinshaw – Walker Macy*
- *Ken Pirie – Walker Macy*

7:05 – Meeting #1 Recap

- *What we heard – Points of light*
- *Ridgedale road improvements*

7:15 – Alternatives Review

- *Overview of alternatives*
- *5 tables, 10 min per table*

8:00 – Summary of Input

8:30 - Next Steps, March 10 – Preferred Development Alternative

Adjourn

Comments from Meeting #1

- Taller buildings closer to the mall – shorter buildings closer to neighborhoods.
- Are smaller retail centers with small businesses viable to the future of Ridgedale?
- What is the relationship of the vision plan to the comprehensive plan?
- Need to develop standards for development – height, setbacks, design, etc...
- Want opportunities for errands, local businesses, incubator opportunities?
- Natural resource extensions/connections into Ridgedale.
- Develop a sense of place for Ridgedale not just SW sector – unifiers, other elements.
- Develop more opportunities and ways for people to provide their input on projects and city issues.
- Small businesses need good proximity and visibility to the street to remain viable.
- Idea for Ridge Square North and South – pull buildings up to street with big buffer to the west.
- Pedestrian safety and friendly design features needs to be incorporated – roundabouts not friendly to pedestrians
- Incorporate more access and activities for kids in future planning/projects. Hopkins Coffeehouse reference, skating, versatile spaces



Cartway Lane



too many units looking into the neighbor hood 2-10

Can the greens go behind instead of in front? make another green space in front of path

We need to have a path that drives away to the office building. We don't need the path in the middle.

LED lights on the trees - to create magical feeling year round

Not sure green space make sense where it is

The more green space the better!

Ridgedale Dr

Wells Fargo

h Rd

Plant a variety of conifers. **A**
Deciduous trees are worthless green cover for most of the year.
buffer

Mixed **A**
Use too tall

Town House
COMMUNITY **A**
GARDEN

Re position green space to make a larger buffer between neighborhood + townhouses. **A**

Where are the crosswalks?
Any lights? **A**

BAD because NO green space **B**

Curve is it safe? Not just for beauty.

prefer no path **B**
There - connect to existing trail + less disruption + wetlands

Replace the wood fence with a cool wall - long lasting - with art **B1** and extend the fence?

B1
Mixed use too tall (6 stories)
Yes → too tall

(C)
NOT sure green space makes sense here.

We need to know where the driveway is? **(C)**
Maybe we need a pedestrian bridge?
We don't

Too many units looking into the neighborhood.
- Ditto!!

Can the greens go behind instead of in front? **(C)**
into another green

LED lights on the trees - to create magical feeling year-round? **(C)**

The more green space the better! **(C)**

A Flip Green **D**
w/ TOWNHOUSES

← Mixed **D**
Use too tall! (6 stories)

Connect to **D** Existing Trail at Regency Woods
↓

Least Favorite Option **(E)**

4 STORIES TOO HIGH
I agree! **(E)**
AGREE

Connect to **(4)** existing trail at Regency Woods

Need a **(E)** sidewalk on TCF side of Carway so our quadrant can safely walk to Ridgedale

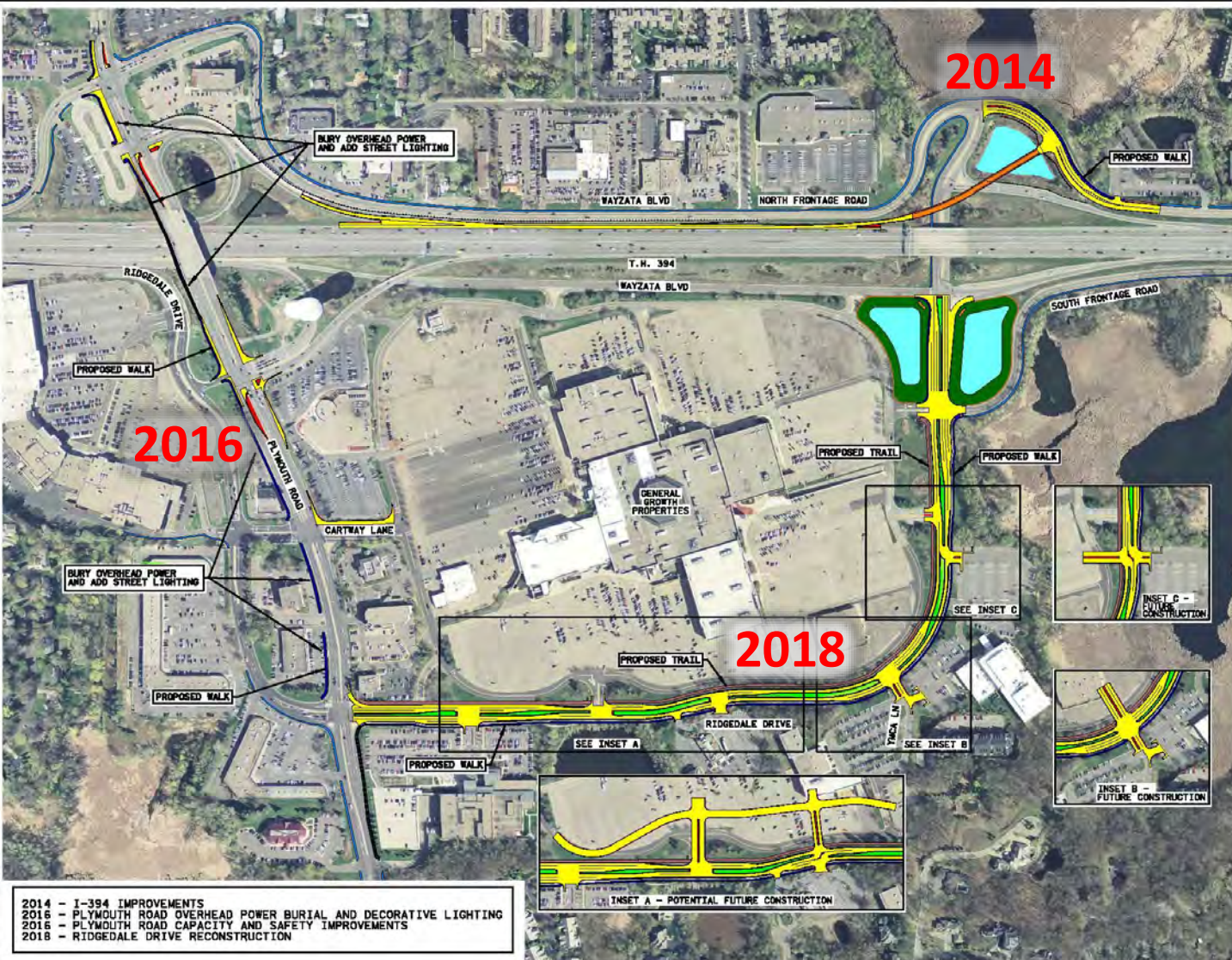
**PROPOSED
RIDGEDALE AREA IMPROVEMENTS**
CITY OF MINNETONKA

2014 - 2018



LEGEND

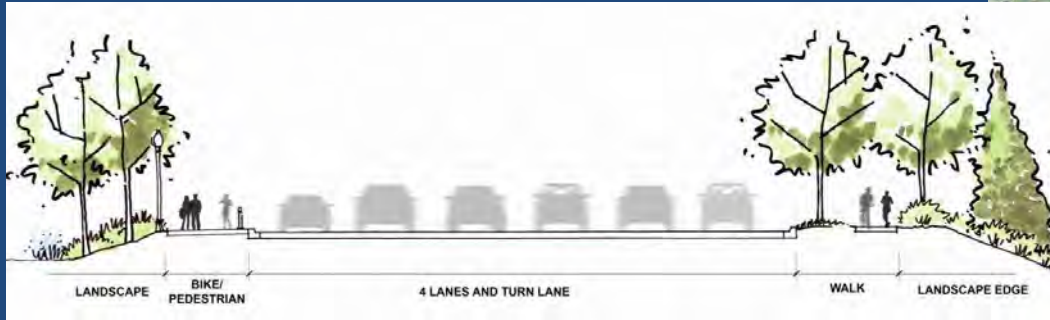
- PAVED ROADWAY IMPROVEMENTS
- CONCRETE MEDIUM
- BRIDGE
- PROPOSED TRAIL
- PROPOSED SIDEWALK
- EXISTING TRAIL / SIDEWALK
- PROPOSED POND / WATER FEATURE
- PERMANENT LANDSCAPE AREA
- WATER BUFFER PLANTING



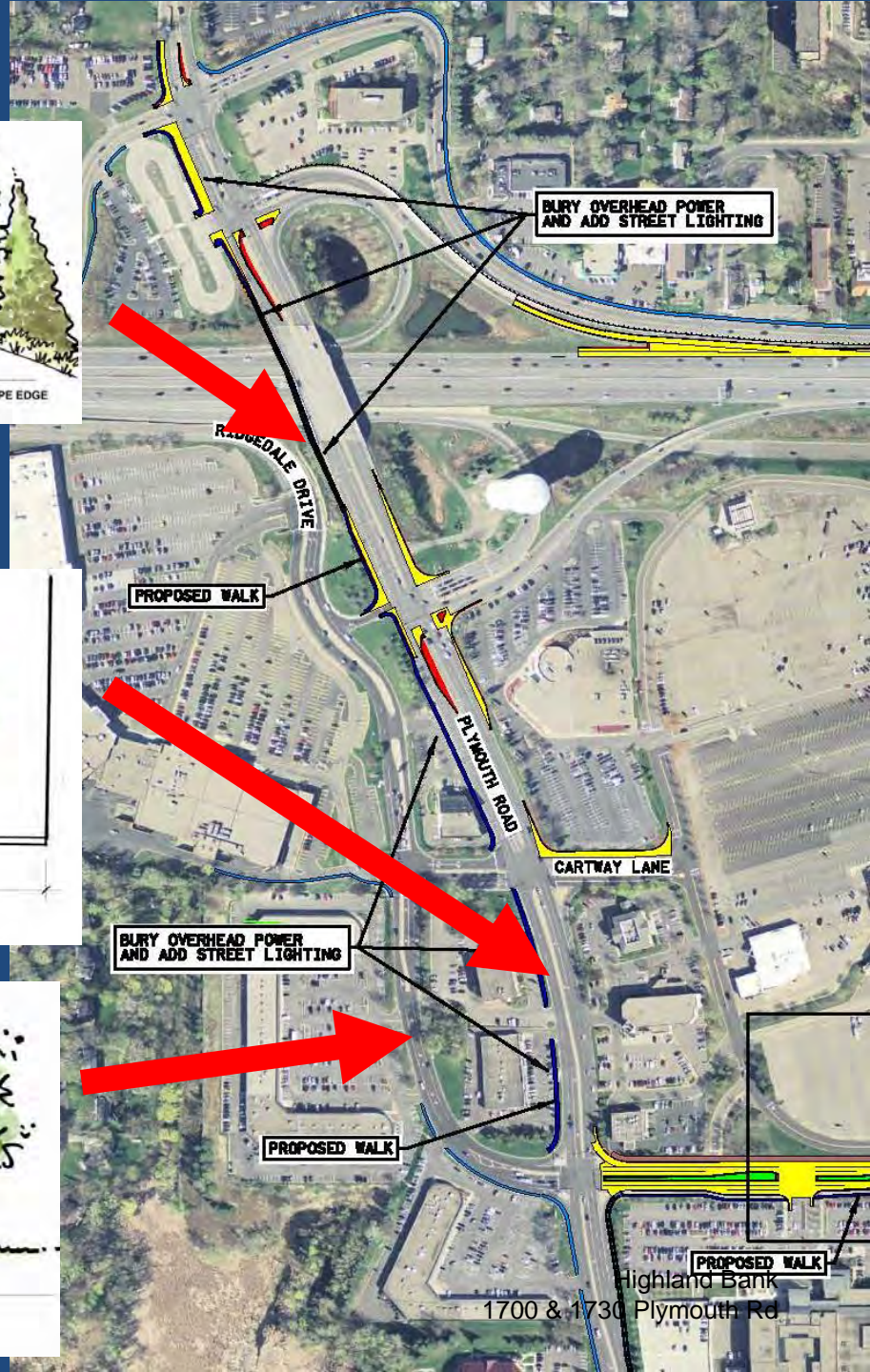
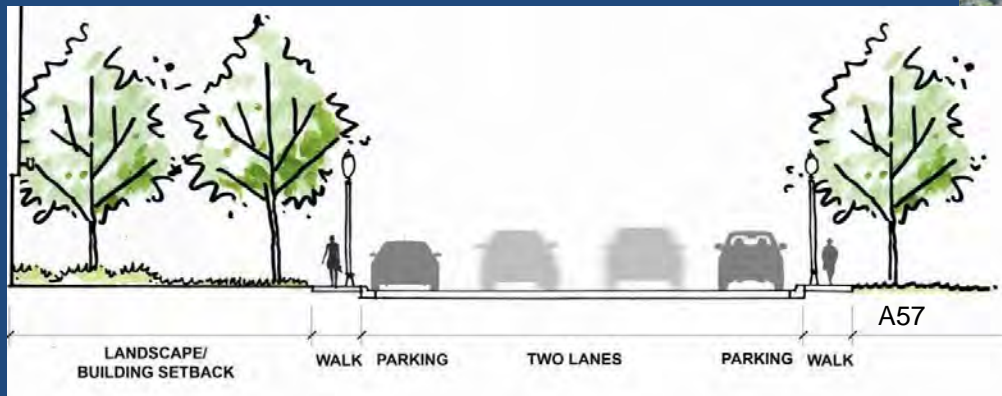
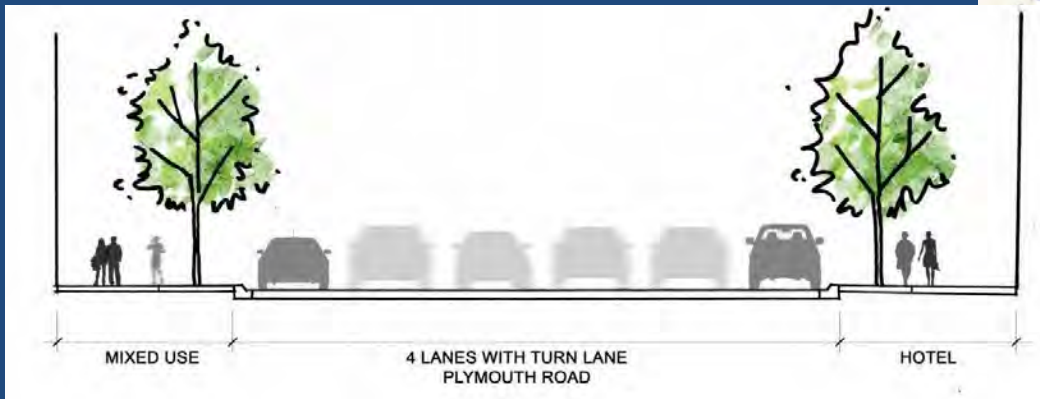
2014 - I-394 IMPROVEMENTS
 2016 - PLYMOUTH ROAD OVERHEAD POWER BURIAL AND DECORATIVE LIGHTING
 2016 - PLYMOUTH ROAD CAPACITY AND SAFETY IMPROVEMENTS
 2018 - RIDGEDALE DRIVE RECONSTRUCTION



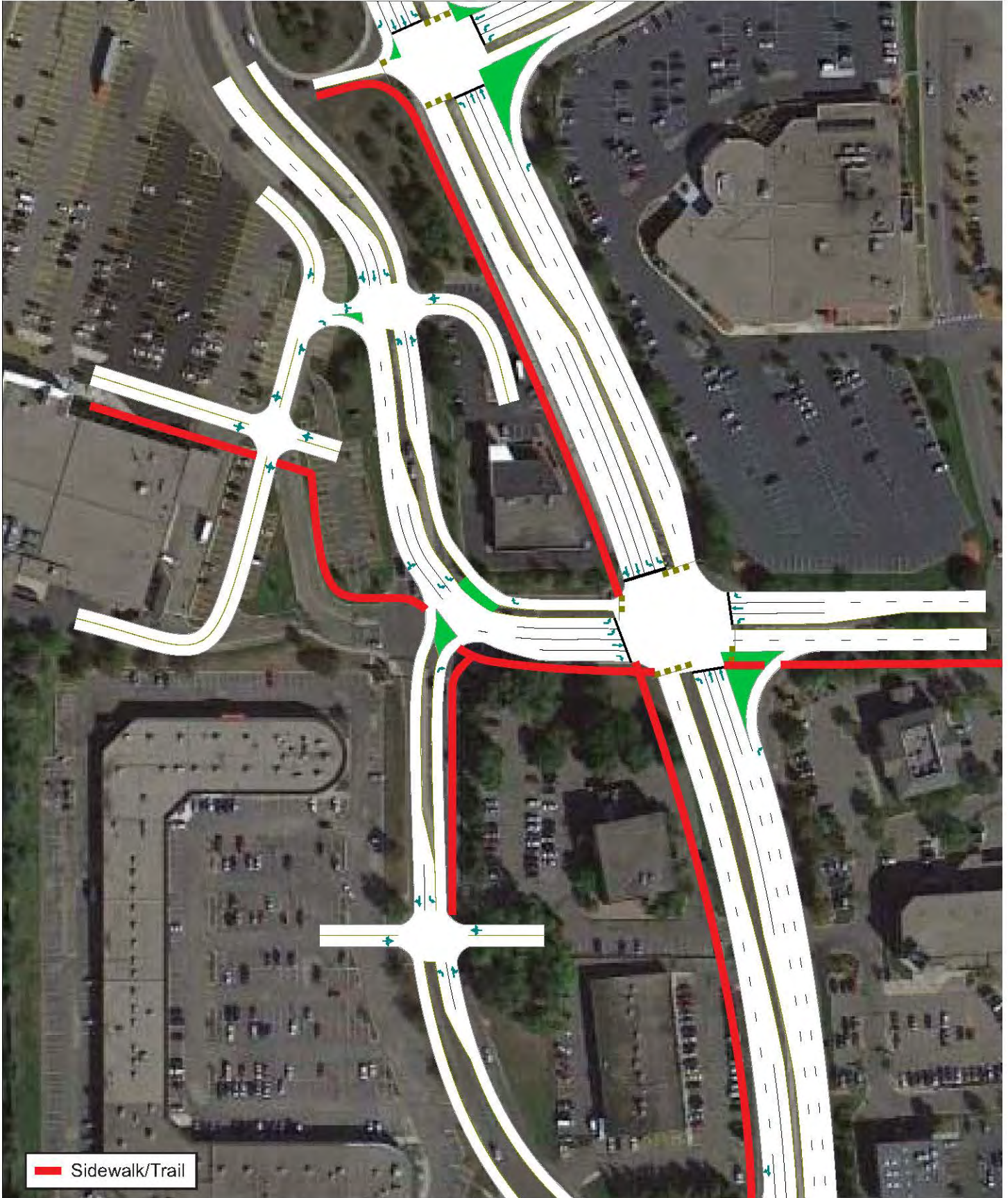
Planned Roadway Improvements 2016



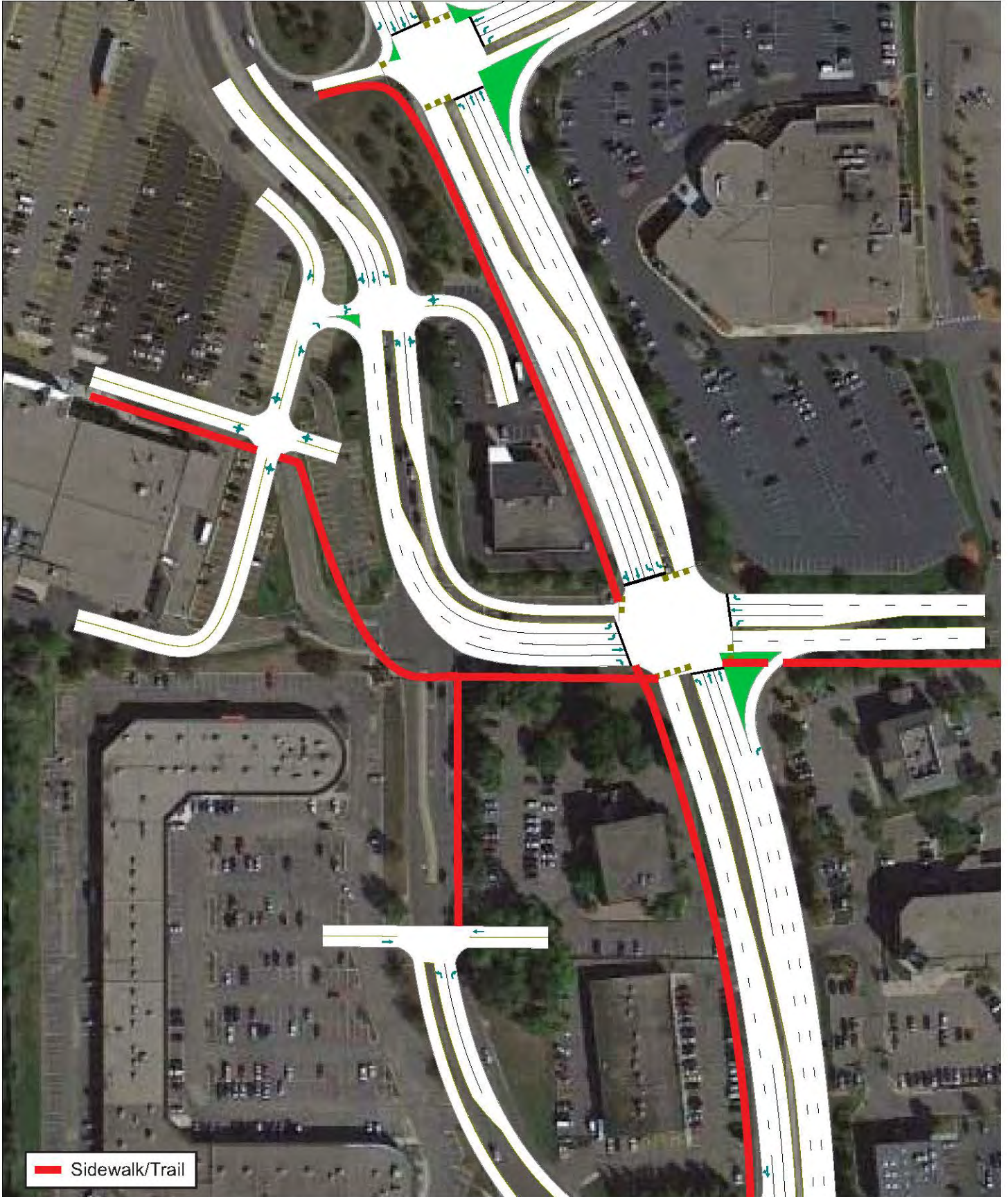
Potential Roadway Improvements



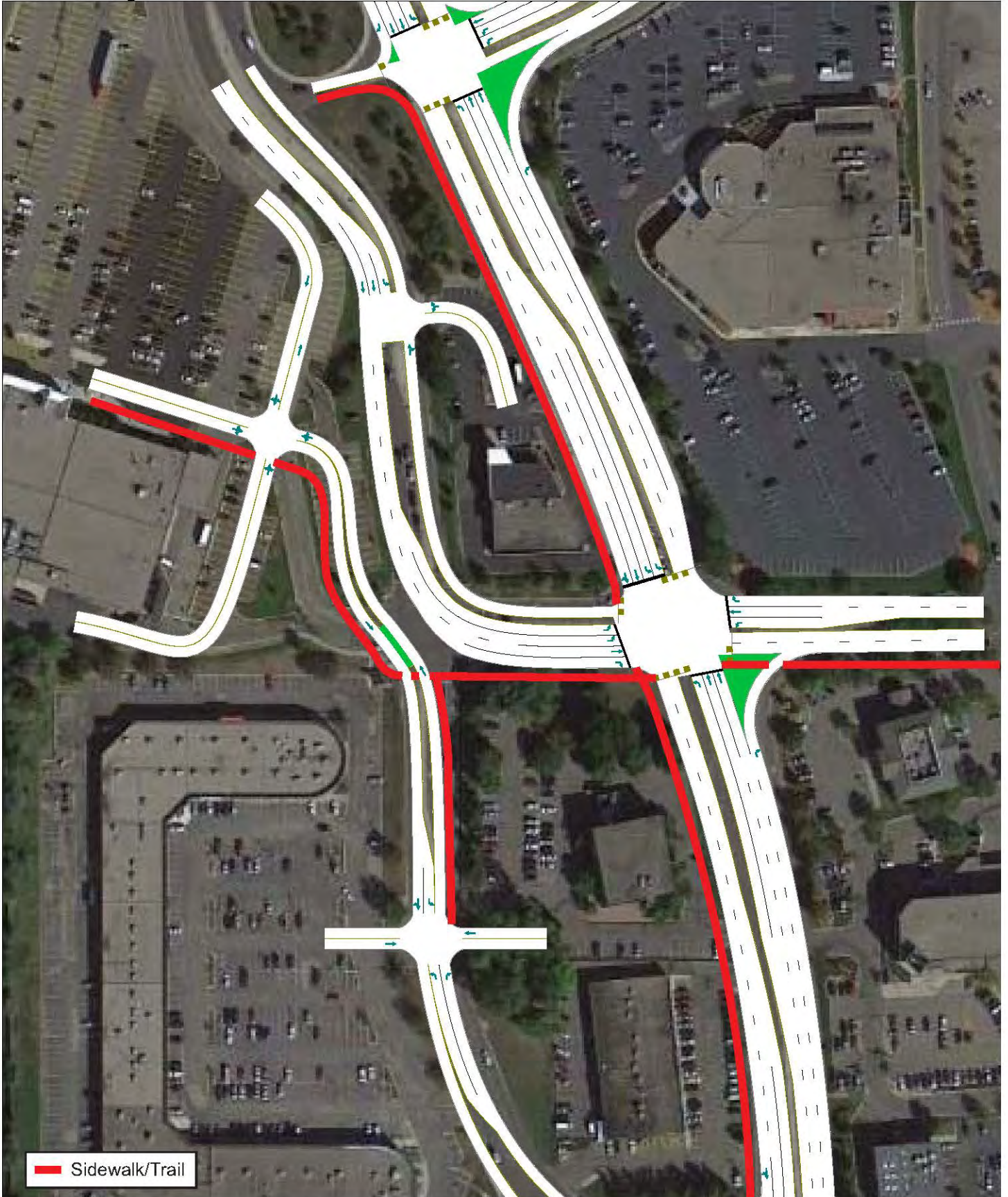
Cartway Alternative 1

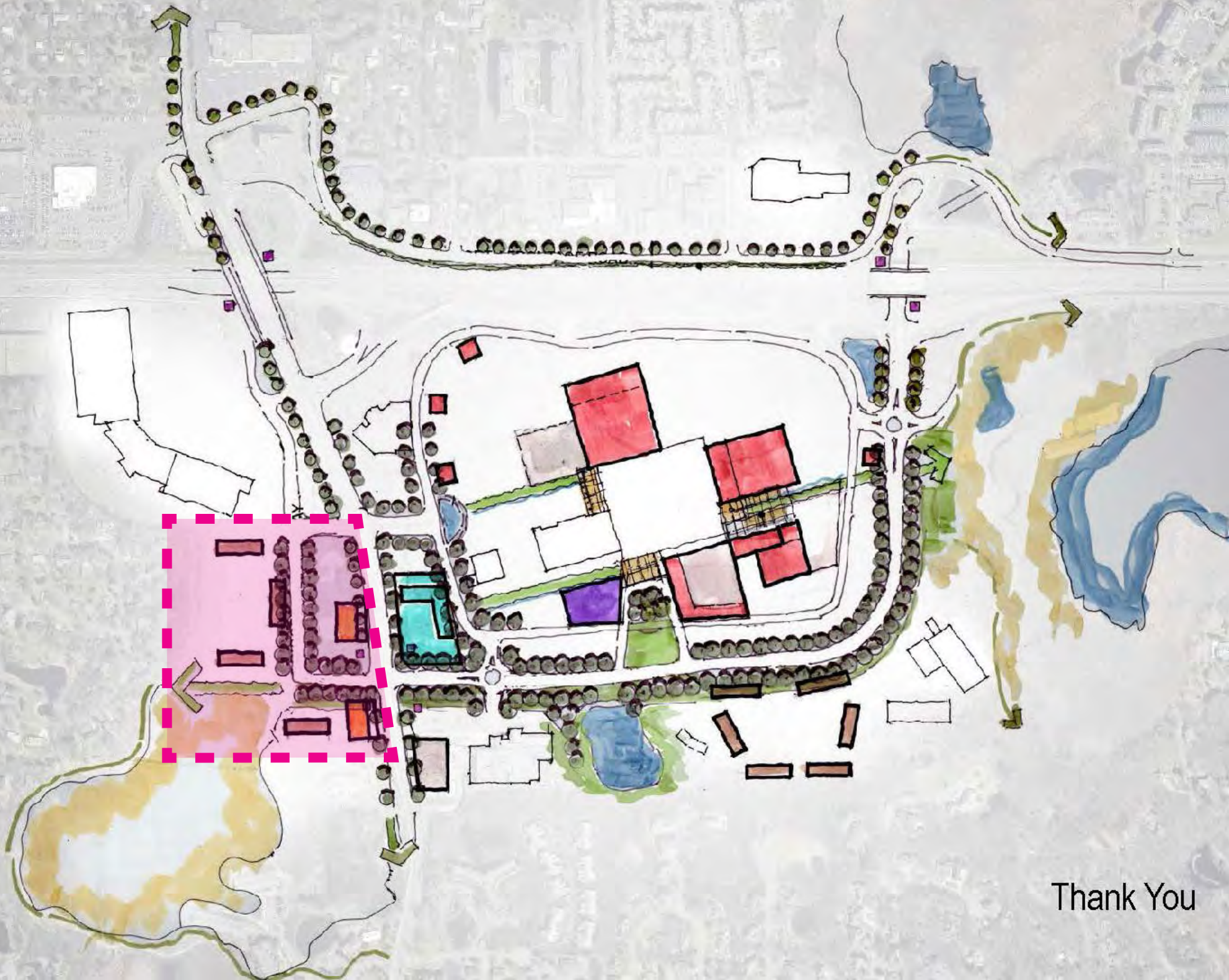


Cartway Alternative 2

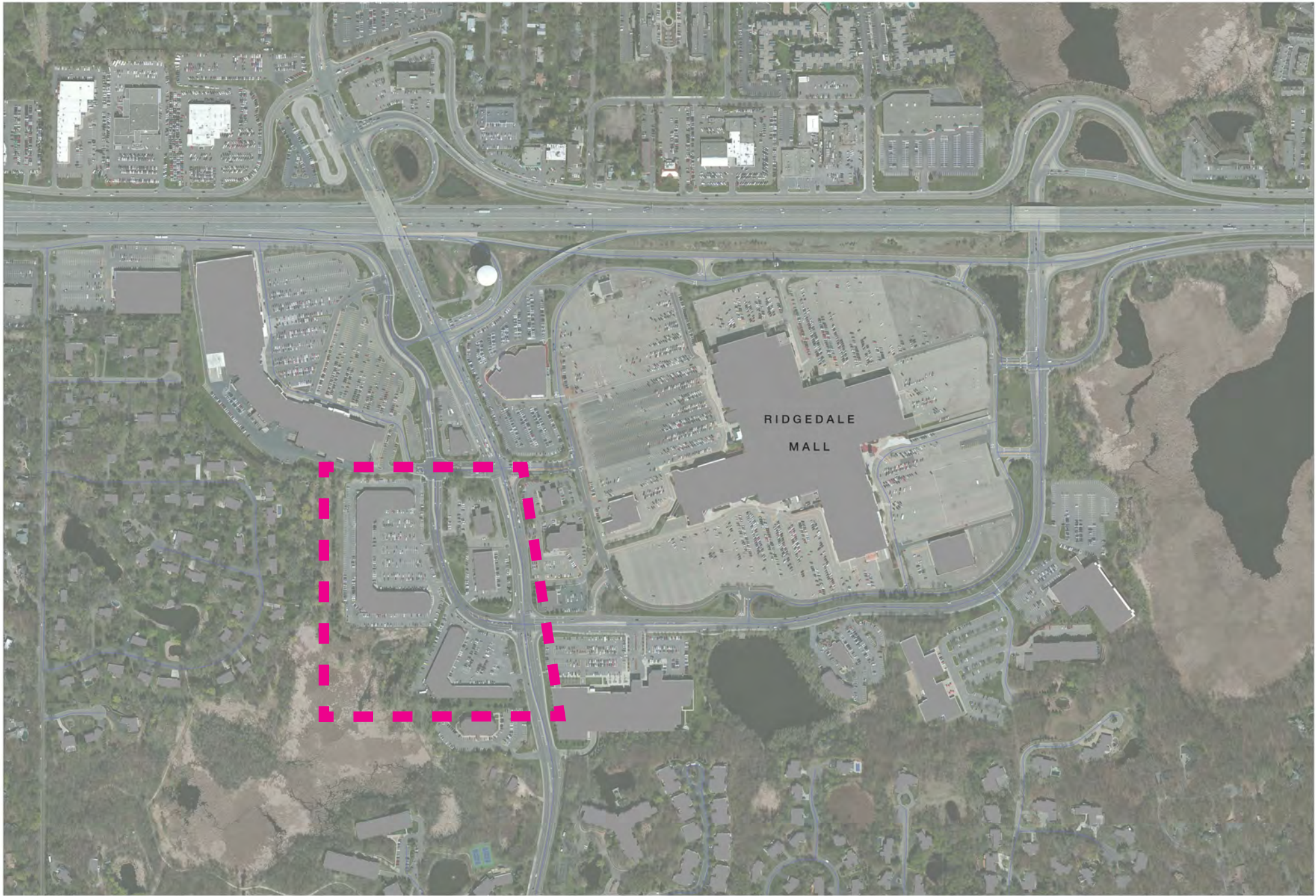


Cartway Alternative 3



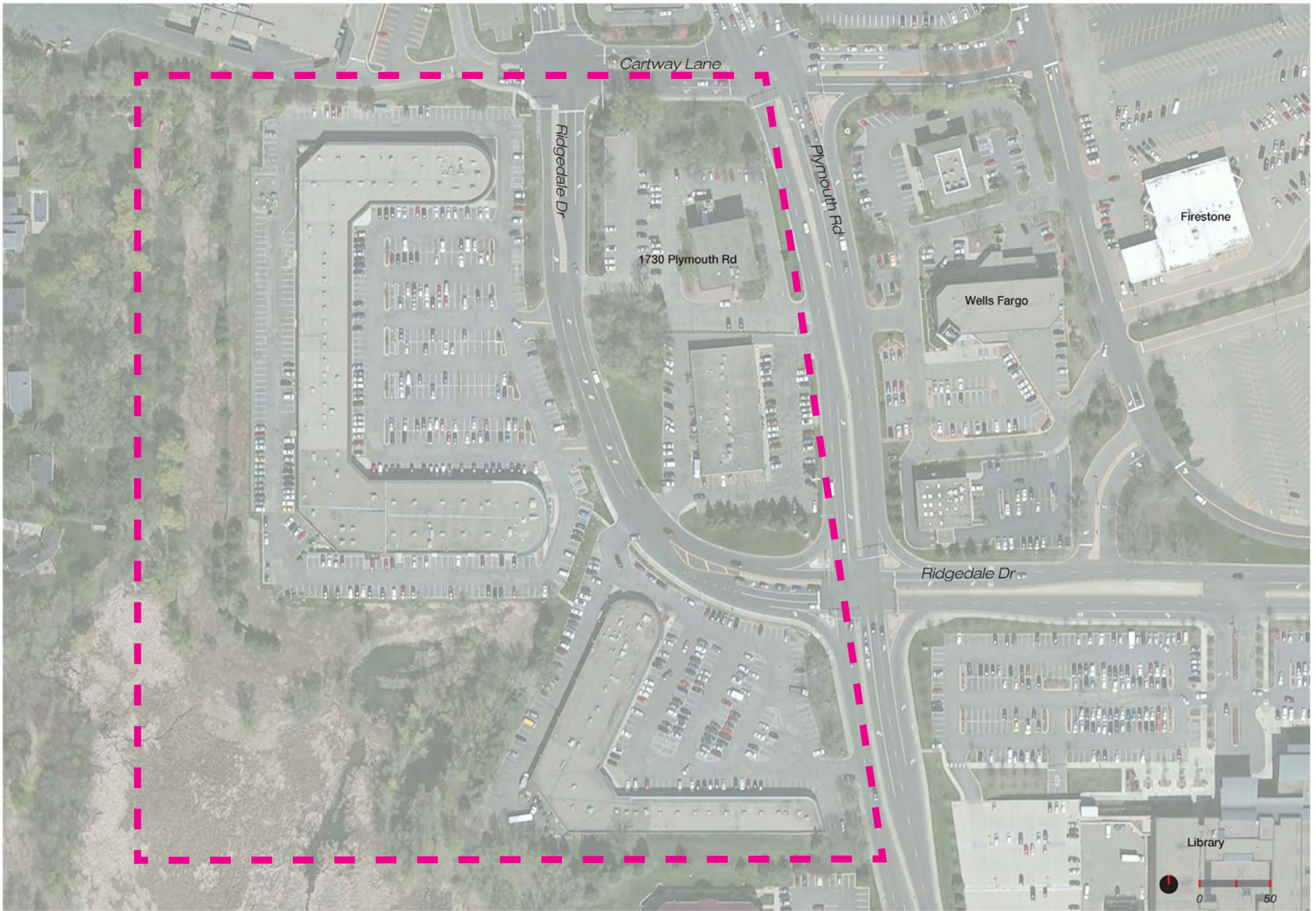


Thank You



RIDGEDALE
MALL

Ridgedale District
Southwest Quadrant



Ridgedale District Southwest Quadrant







RIDGE SQUARE











13423

Conceptual Alternative A

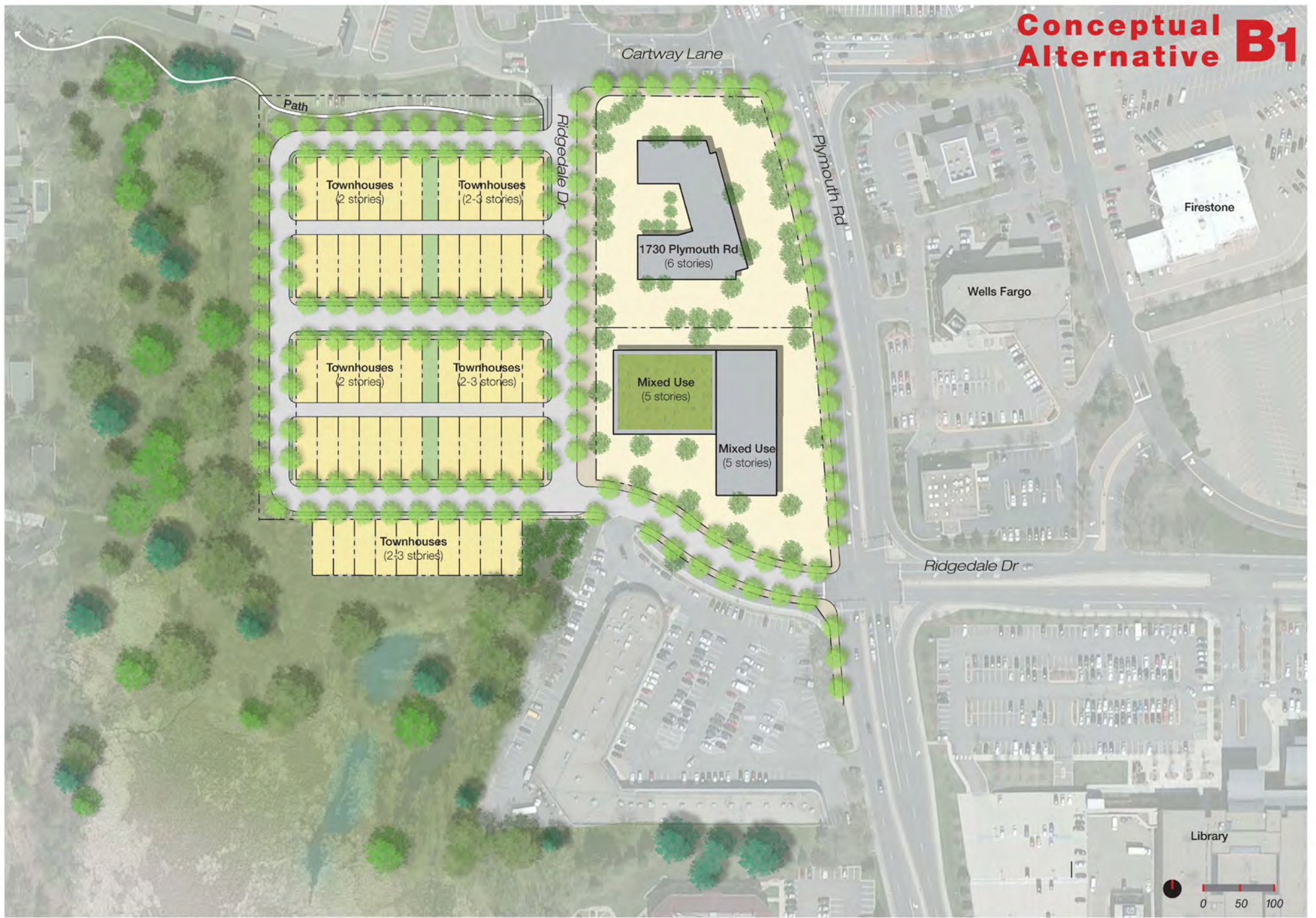


Conceptual Alternative B

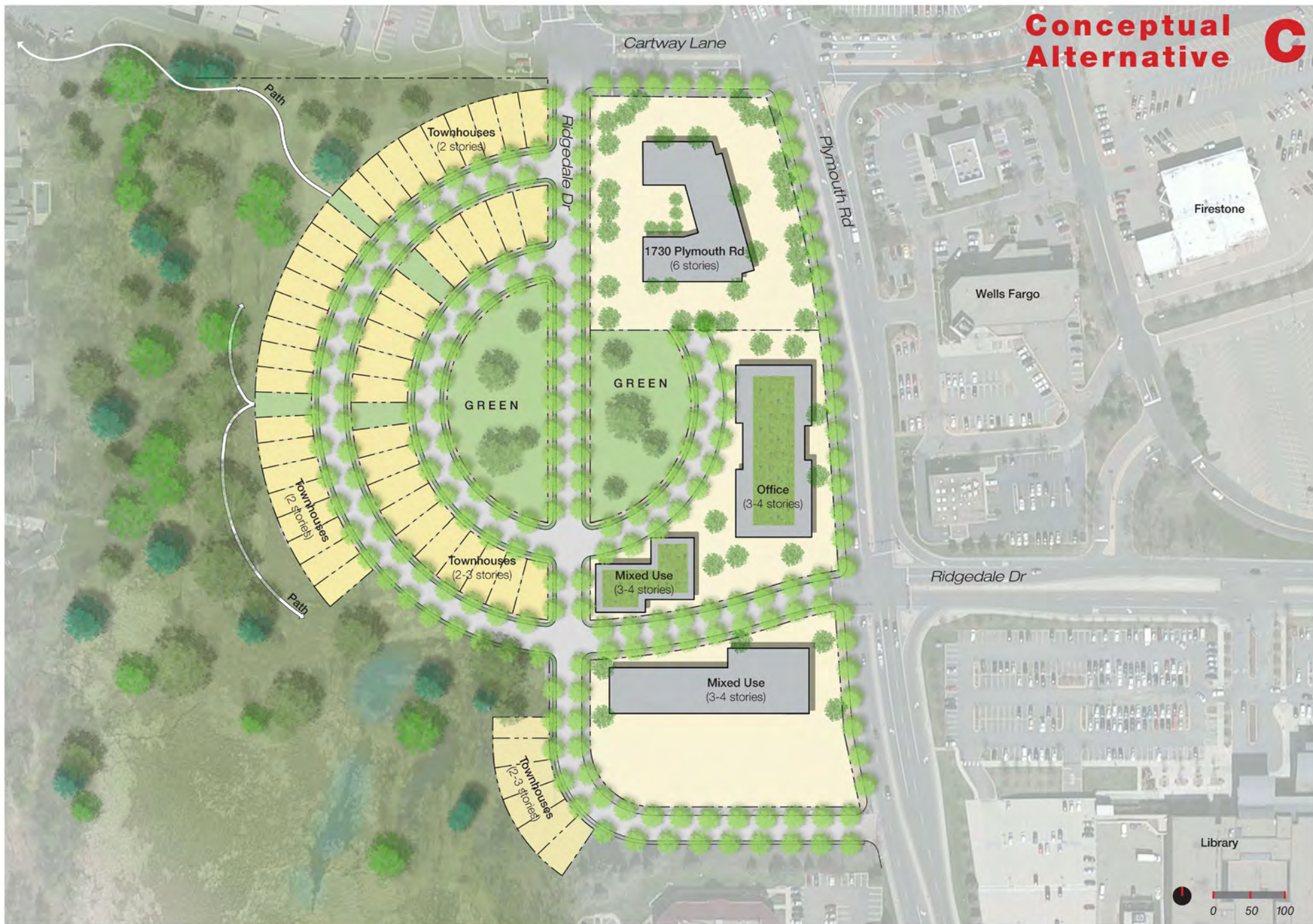


Ridgedale District Southwest Quadrant

Conceptual Alternative B1

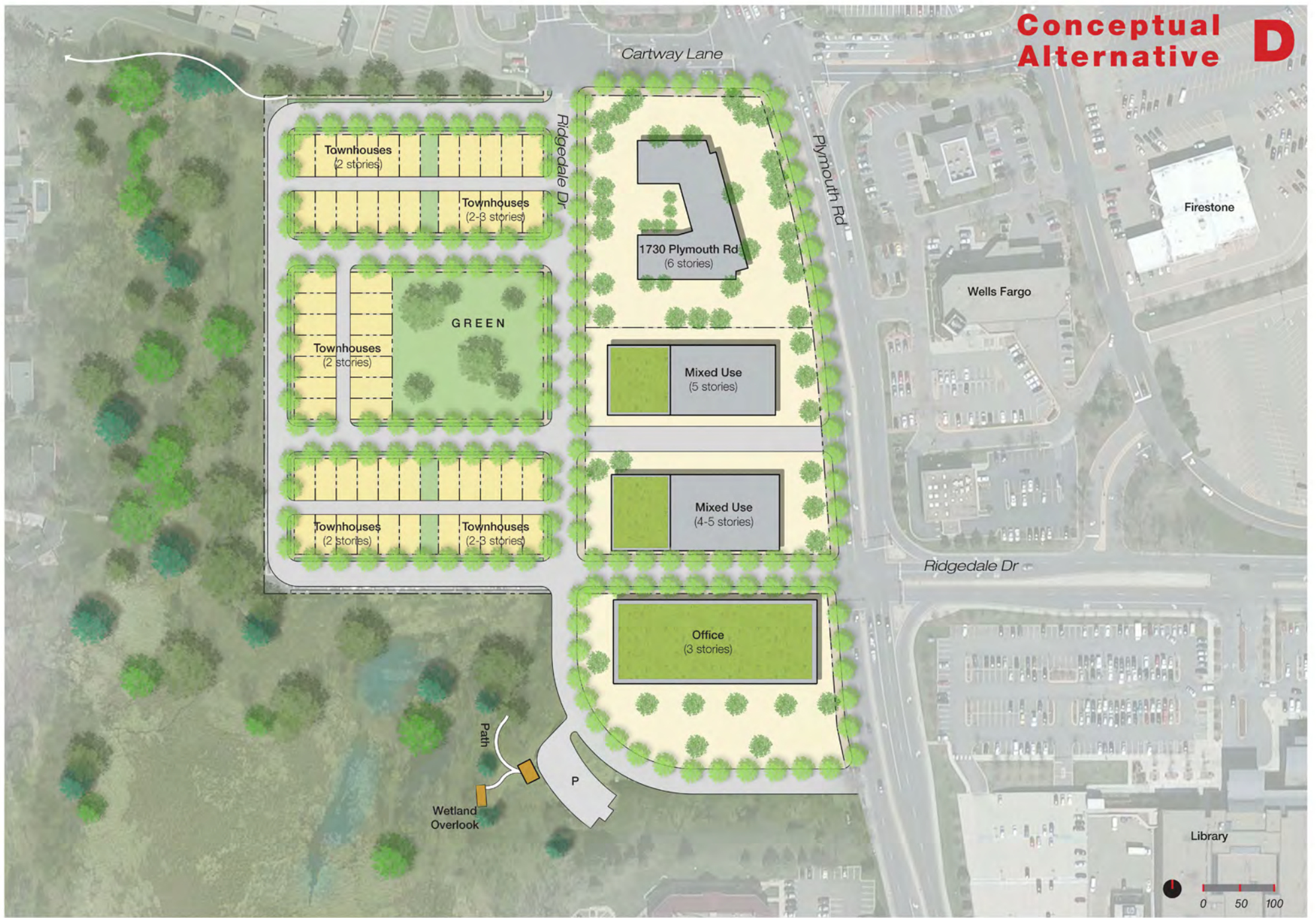


**Conceptual
Alternative C**



**Ridgedale District
Southwest Quadrant**

Conceptual Alternative D



Ridgedale District Southwest Quadrant

Conceptual Alternative E



Ridgedale District Southwest Quadrant





Examples:
Public Streets





climate regulation

heat island mitigation

curb extension

infiltration

non-invasive facultative landscapes

erosion control and
sediment retention

Siskiyou Street
Portland, Oregon



Examples:
Parks & Natural Areas





Example:
Trails



Examples:
Townhomes





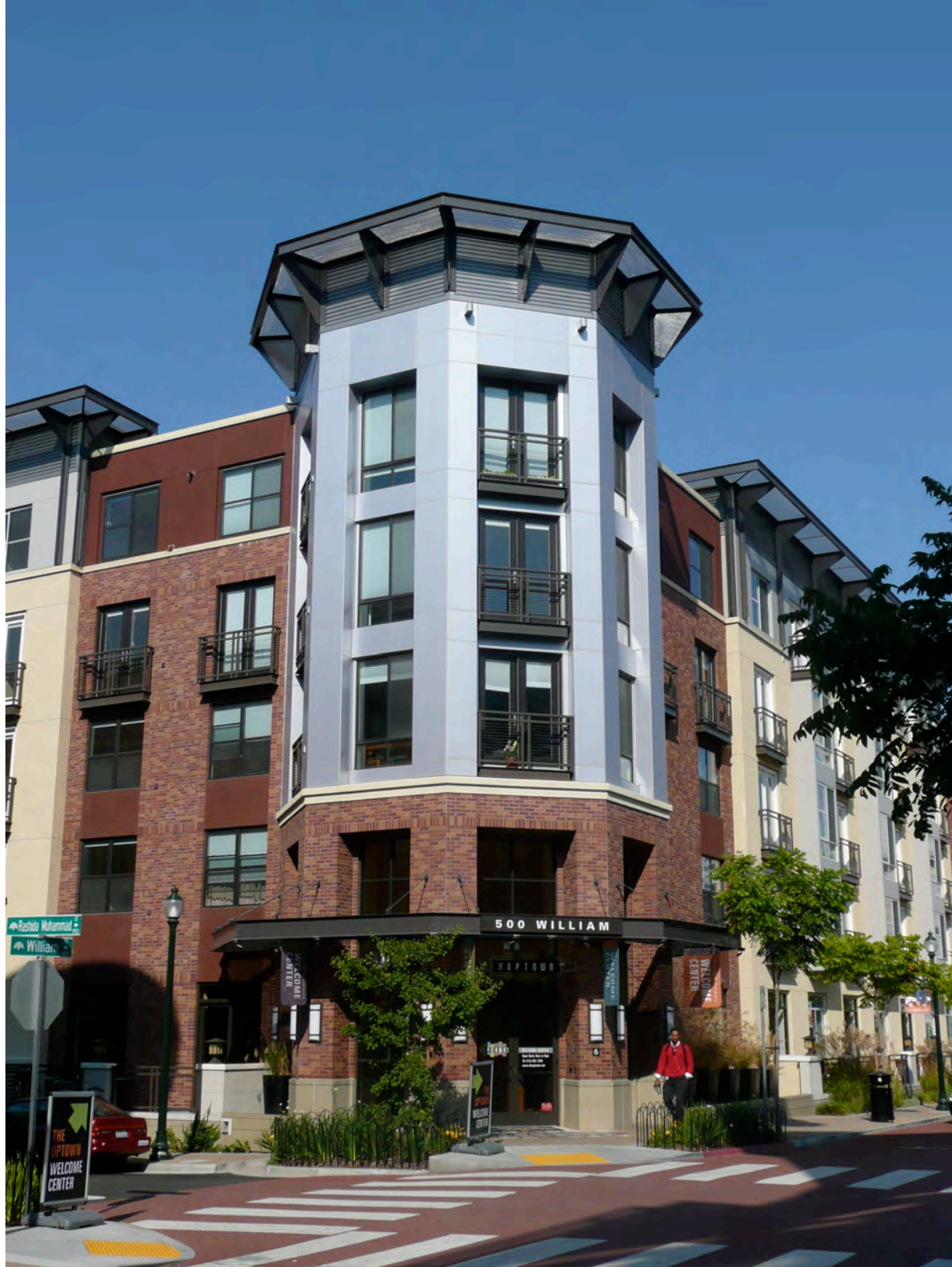






1461

1459



**Examples:
Mixed-Use**



Table Discussions

Ridgedale District
Southwest Quadrant

Next steps:

~~1. Initial Meeting~~

~~2. Alternatives Development~~

- ~~• Design Workshop~~**
- ~~• Public Input Meeting~~**

3. Compile Recommendations - March 10

- Consensus on Southwest Sector**

4. Finalize Recommendations

- Finalize Report**
- City Policymakers**

How can I stay informed?

Information regarding these projects can be found on the city's website at www.eminnetonka.com under "Projects."

Any questions, please contact:

**Ridgedale Vision and
Development Related:**

**Loren Gordon
City Planner
lgordon@eminnetonka.com
(952)939-8296**

**Roads and Infrastructure
Related:**

**Will Manchester
Assistant City Engineer
wmanchester@eminnetonka.com
(952)939-8232**

Thank you for coming!