

# Ridgedale: A Vision for 2035

## Southwest Sector

City of Minnetonka



# ***Tonight's Meeting Agenda:***

## **6:00 – Welcome and Introductions**

- *Barbara Raye - Center for Policy, Planning and Performance*
- *Loren Gordon - City Planner*

## **6:05 – Process Recap**

- *What we did hear*
- *What we didn't hear*

## **6:15 – Interim Measures**

- *Principles to guide moving forward*
- *Redevelopment that may occur*
- *City council updates*

## **6:30 – Moving Forward**

- *Roadway Improvements*
- *Staying Engaged*
- *Comprehensive Plan process*

## **6:40 – Your Reactions**

## **7:00 – Adjourn**

# Process Recap

- What we did hear...



## Process Recap

- What we didn't hear



# Interim Measures

- Principles to guide moving forward
- Redevelopment that may occur
- City council updates



# Principles to guide moving forward:

1. Create a sense of place for the entire Ridgedale Village that would make it a distinctive destination and instill pride
2. Reinforce the identity of Minnetonka - using signage and other markings to highlight key values such as commitment to natural resources, livable community, and not "intense" like places that are in the urban core.
3. Building height should transition from taller closer to the mall to shorter closer to neighborhoods
4. Provide a good separation and transition between commercial uses and residential areas
5. Keep space available that is on street front and visible for local and small businesses that make living in the area more convenient and add to the overall livability of the neighborhood

## Principles to guide moving forward:

6. If additional green space, public spaces etc. are made available when/if redevelopment occurs - make sure there is good access for neighborhood people to benefit
7. Don't design something that would "overuse" the natural areas. Keep preservation and care of the environment as a key factor in planning and development.
8. Dampen road traffic in and around the residential areas
9. Improve pedestrian and biker safety
10. Increase family friendly/youth opportunities as feasible
11. Listen to the community input and use it for decision-making. Involve people proactively in things that impact them.

# Redevelopment that may occur

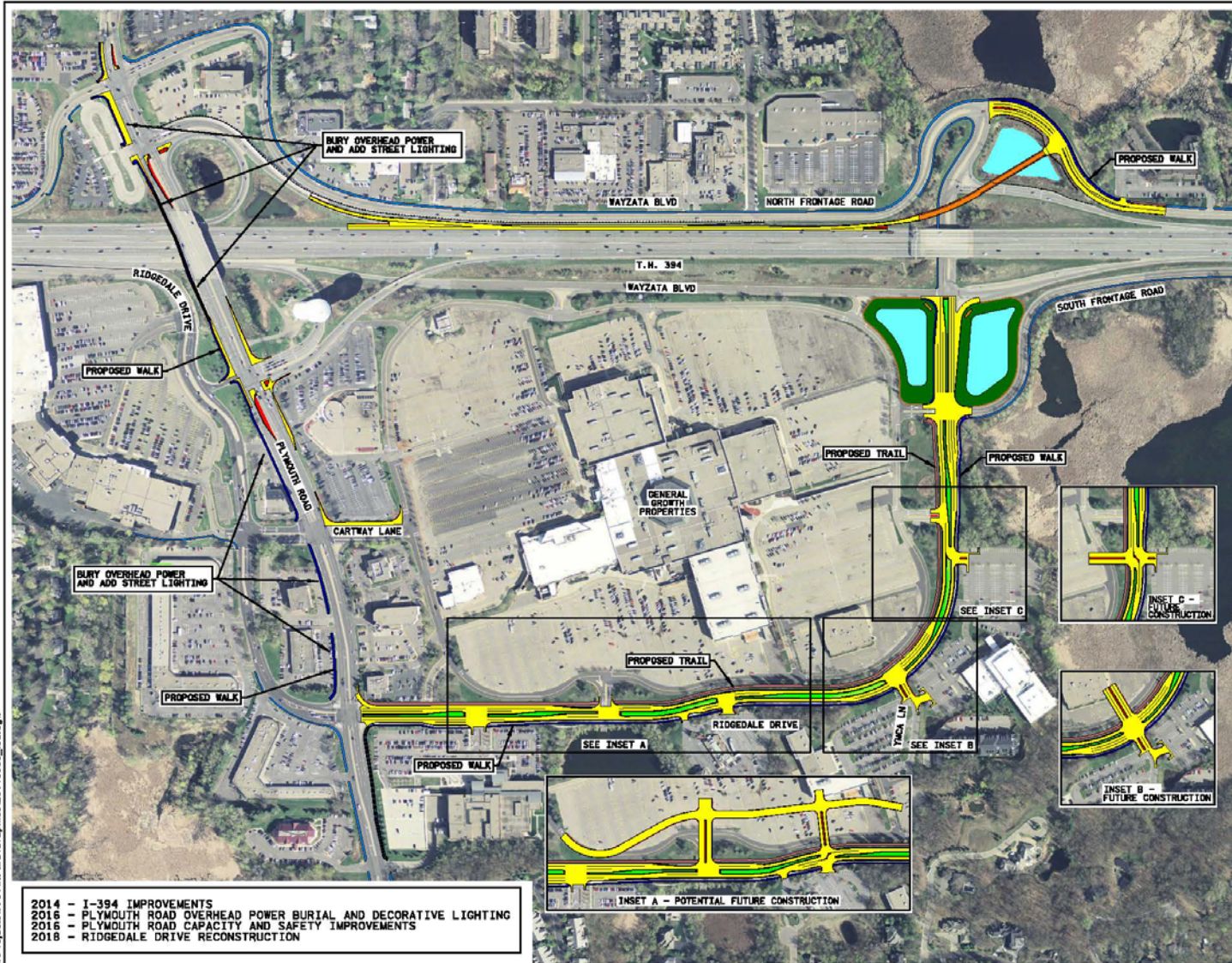




## Moving Forward...

- Roadway Improvements
- Staying Engaged
- Comprehensive Plan process

# Ridgedale area roadway improvements



**PROPOSED  
RIDGEDALE AREA IMPROVEMENTS**  
CITY OF MINNETONKA  
2014 - 2018



**LEGEND**

- PAVED ROADWAY IMPROVEMENTS
- CONCRETE MEDIUM
- BRIDGE
- PROPOSED TRAIL
- PROPOSED SIDEWALK
- EXISTING TRAIL / SIDEWALK
- PROPOSED POND / WATER FEATURE
- PERMANENT LANDSCAPE AREA
- WATER BUFFER PLANTING

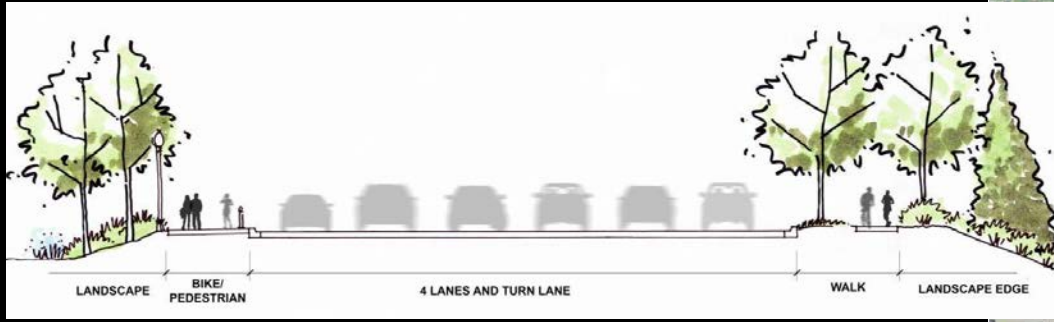
2014 - I-394 IMPROVEMENTS  
 2016 - PLYMOUTH ROAD OVERHEAD POWER BURIAL AND DECORATIVE LIGHTING  
 2016 - PLYMOUTH ROAD CAPACITY AND SAFETY IMPROVEMENTS  
 2018 - RIDGEDALE DRIVE RECONSTRUCTION

H:\Projects\17701\H-M\UGraphics\20140803\_10a.dgn

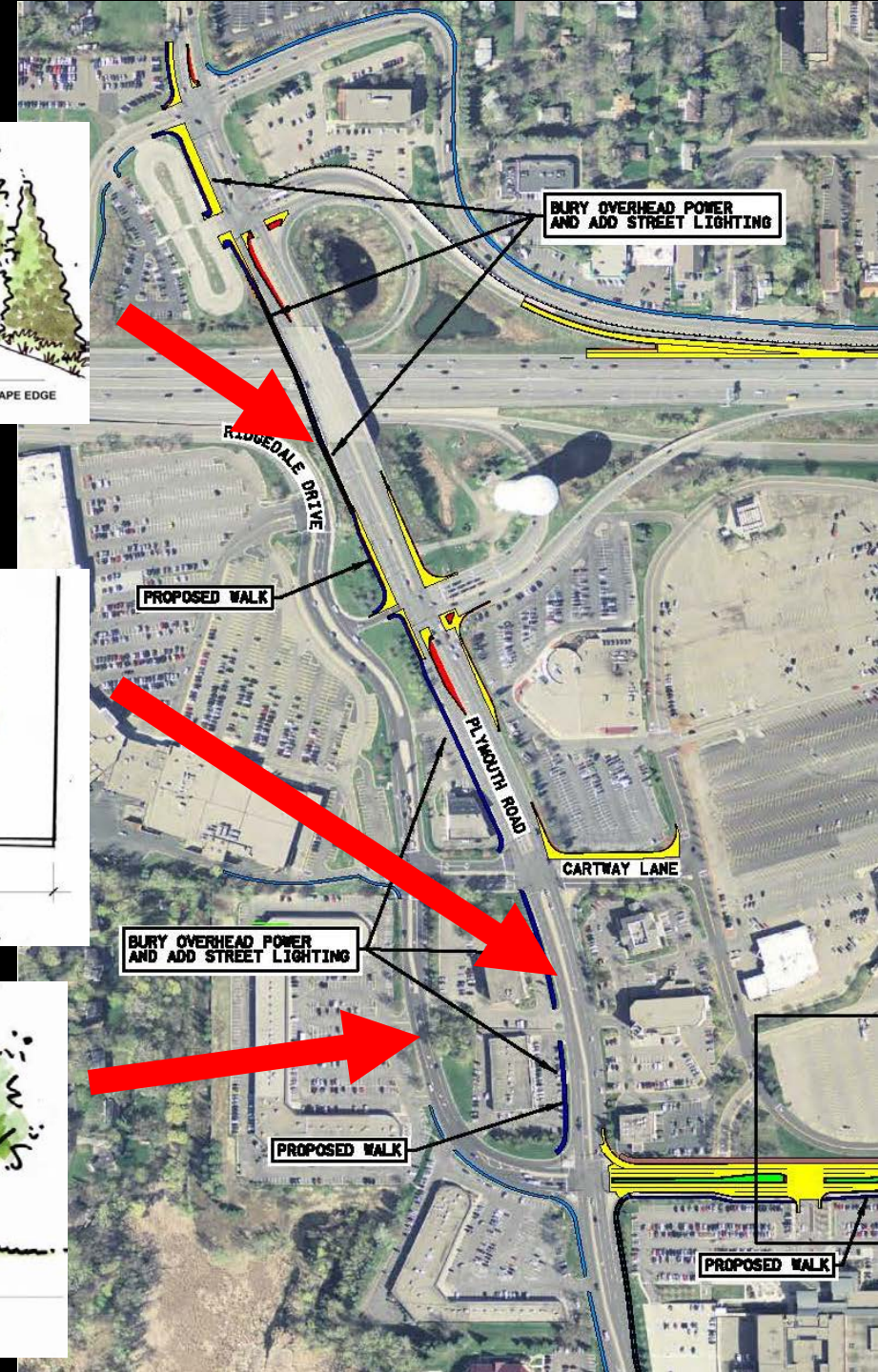
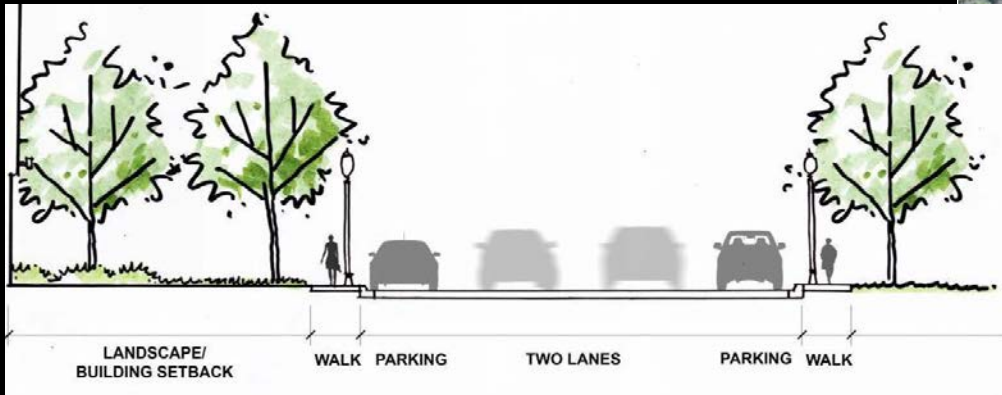
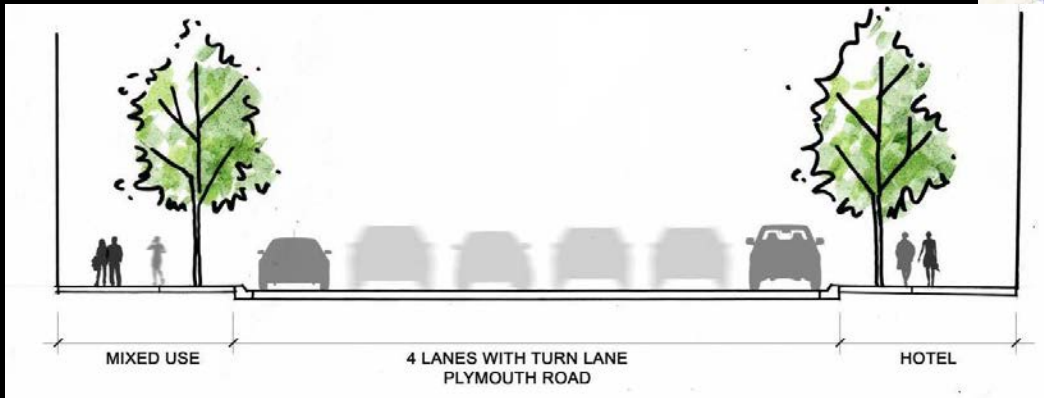
Job #  
9/10/2014



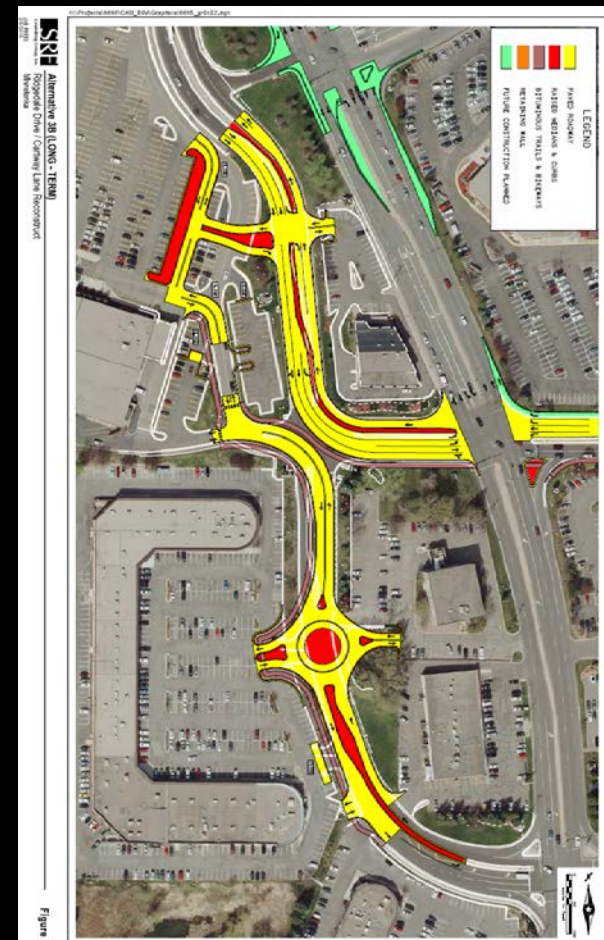
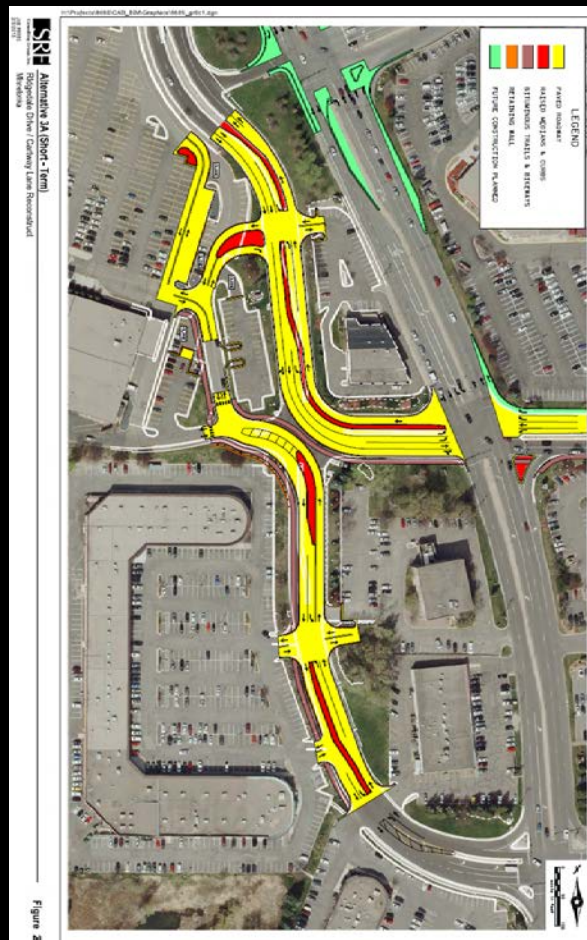
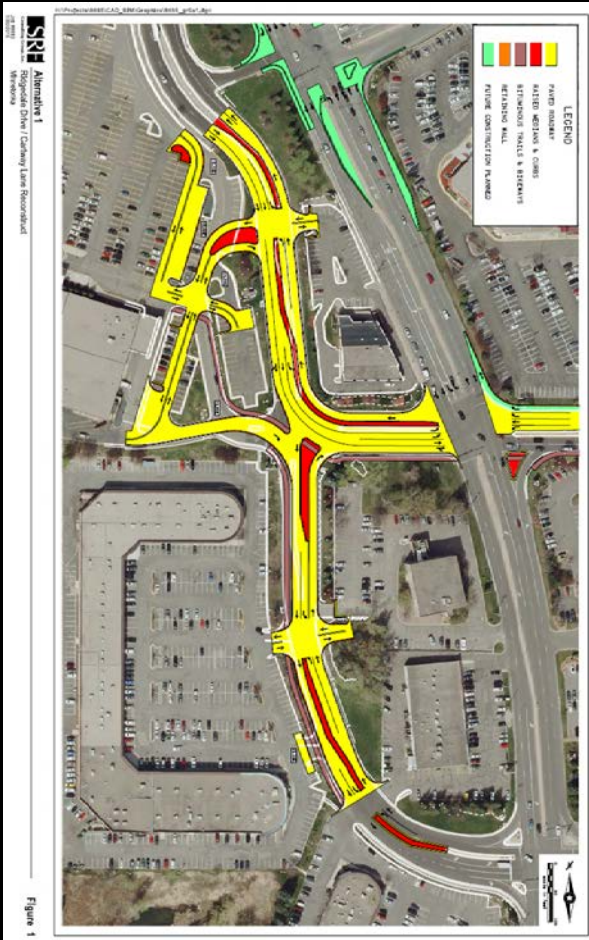
# Plymouth Road



## Potential Roadway Improvements



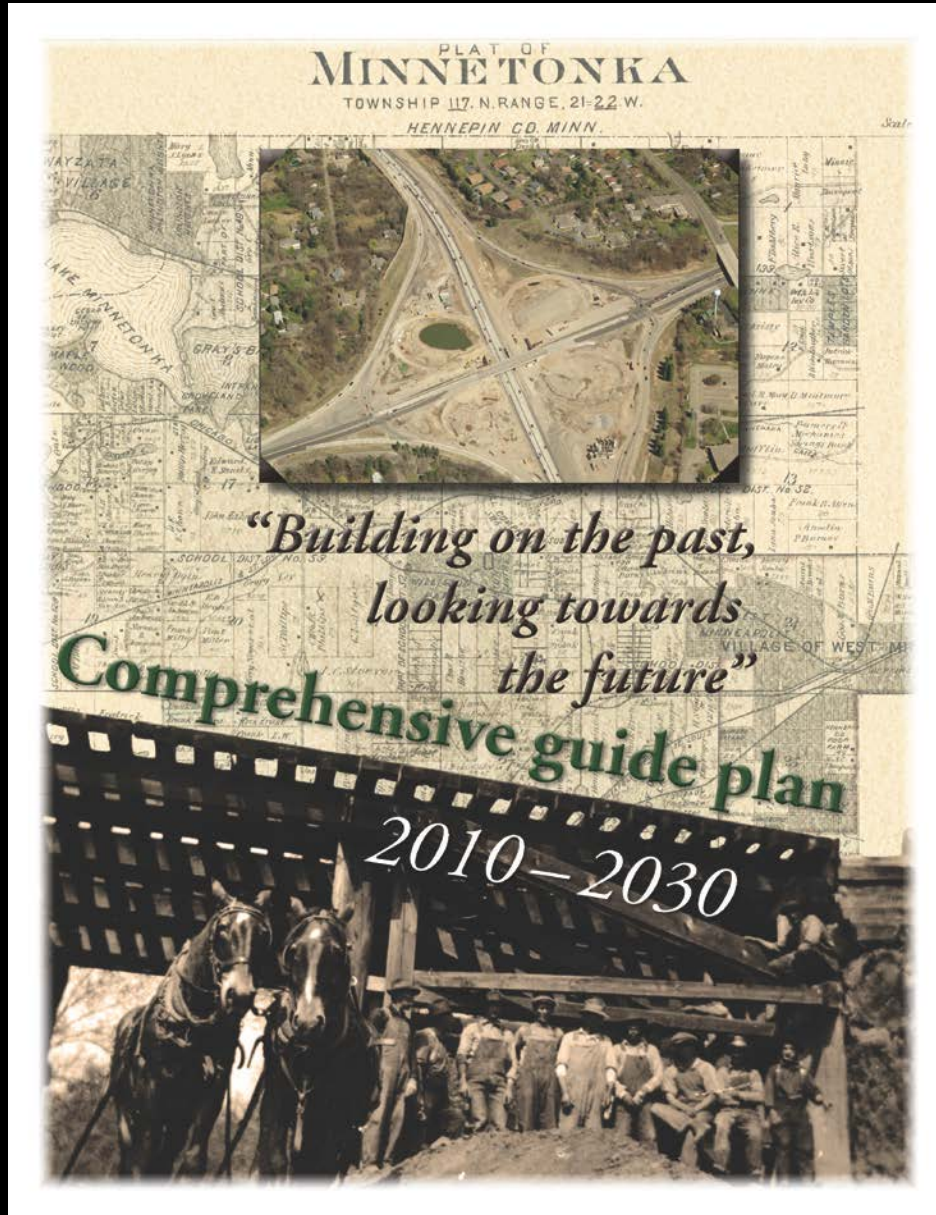
# Continuing to evolve Cartway Lane design options



# Staying Engaged

- As redevelopment projects come forward
  - Cherrywood Point
  - Other Ridgedale area projects
  - Sign-up for development feed @eminnetonka.com
- Capital Improvement Program
  - Plymouth Road improvements
  - Potential Cartway Lane improvements
  - Ridgedale Drive improvements
- Other touch points
  - Community news and events
  - Comprehensive Plan

# Comprehensive Plan Update (2018)



# How can I stay informed?

**Any questions, please contact:**

**Ridgedale Vision and  
Development Related:**

**Loren Gordon  
City Planner  
lgordon@eminnetonka.com  
(952)939-8296**

**Roads and Infrastructure  
Related:**

**Will Manchester  
Assistant City Engineer  
wmanchester@eminnetonka.com  
(952)939-8232**

*Thank you for coming!*