

minnetonka memo

A Newsletter from the City of Minnetonka
October 2012

Fire Department and City Open House is October 9

MEET CITY STAFF AND LEARN MORE about your local government at the Minnetonka Fire Department and City Open House Tuesday, Oct. 9, from 5 to 8 p.m. at the Minnetonka Civic Center campus, 14600 Minnetonka Blvd.

Kids four and over can ride in city fire trucks, and everyone can enjoy free hot dogs, cookies, pop and lemonade along with department tours and entertainment.

Bike to Open House

Avoid the parking hassles and bike to the Fire Department and City Open House! If you do bike, please remember the sun sets earlier this time of year. Be sure to wear light-colored clothing if you'll be biking in the dark, and have the proper lighting on your bicycle.

Organics collection

The city is embracing organics collection and is pleased to offer it again this year at Open House. Look for the organics collection bins around the campus, and toss in your leftover food, napkins, paper cups and plates. All food and food containers offered at the open house can be thrown in the organics bin. Recycling bins will be available for cans and plastic bottles, and trash cans for any non-compostable, non-recyclable items. Please help make this event environmentally friendly by taking the time to sort your compost, trash and recyclables into the appropriate containers. ♻️



Plan your evening of activities:

- Take a tour of the Minnetonka Police Department's jail and visit with members of the city's Special Weapons and Tactics (SWAT) team. *(Police Department)*
- Get moving with activities sponsored by Recreation Services. *(Community Center lower level)*
- View this year's photo contest entries and vote for your favorite. *(Community Center lower level)*
- Ride in a fire truck. *(Fire Station)*
- Sit inside heavy equipment from the public works department and enjoy a treat. *(Community Center south entrance)*
- Enjoy musical entertainment. *(Community Center, upper level)*
- Visit the House of Germs and learn how to stay healthy! *(Community Center)*
- Browse displays from city departments and boards and commissions; as well as community organizations. *(Community Center lower level)*
- See woodcarving demonstrations. *(Community Center upper level)*
- Snack on free refreshments, including all-beef hot dogs and pop (5–8 p.m., *Fire Station*) and cookies, popcorn, and lemonade. (5–8 p.m., *Community Center upper level*)

Absentee voting continues for November 6 general election

ABSENTEE VOTING FOR THE NOV. 6 general election started Sept. 21 and continues through Monday, Nov. 5.

Unlike some other states, Minnesota does not offer early voting so that voters can avoid potential lines on Election Day by casting a ballot prior to Nov. 6. Absentee voters must meet one of the following four reasons in order to be eligible to cast an absentee ballot:

- Absence from the precinct;
- Illness or disability;
- Religious observance; or
- Service as an election judge in another precinct.

Absentee voting may be done in person or by mail.

In person

Minnetonka voters may vote absentee at Minnetonka City Hall or at the Hennepin County Government Center in Minneapolis during regular business hours, 8 a.m. to 4:30 p.m. Extended absentee voting hours will also be available at both locations Saturday, November 3, 10 a.m. to 3 p.m., and Monday, November 5, until 5 p.m. The longest lines for absentee voting tend to occur the week before the election, so if you have to absentee vote, try to do it early.

By Mail

Absentee voting may also be done by mail. Remember, the voted ballot must be received at city hall by Election Day for the vote to count. Please allow sufficient time for postal service delivery.

The first step to vote absentee by mail is to complete an application. Applications may be obtained by calling city hall, visiting the website at www.eminnetonka.com, or by faxing a request to (952) 939-8244. Upon receipt of an application, the city will mail a ballot with instructions.

It is very important that absentee voters follow the instructions included with the absentee ballot. If the required information is not provided by the voter and witness, by law the ballot must be rejected. In 2010, 45 Minnetonka voters cast unacceptable absentee ballots because statutorily required information was not included when the absentee ballot was submitted. If your absentee ballot is rejected, you will be notified and a replacement will be issued if there is enough time left for you to return it by the deadline to be counted.

Pre-registering to vote

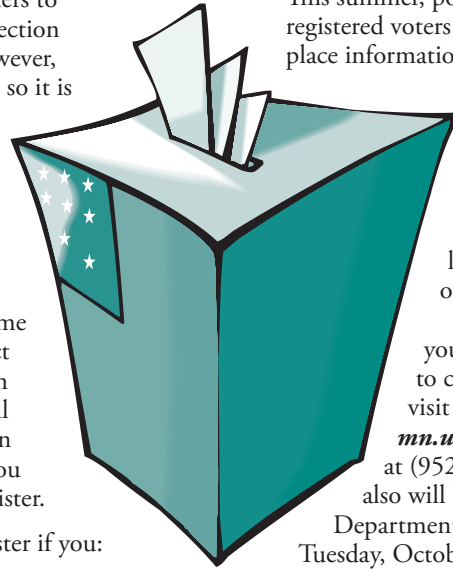
Minnesota allows voters to register to vote on Election Day at the polls. However, the lines can be long, so it is to your advantage to register before Election Day. Pre-registration for the general election closes on October 16 to allow Hennepin County time to update the precinct voter lists for Election Day. Contact city hall for a voter registration application form if you would like to pre-register.

You will need to register if you:

- Have never registered.
- Have changed your name or address (including just moving to another apartment in the same building) since you last voted.
- Have not voted in four years.

Know where you vote

Because of redistricting, many Minnetonka residents will be voting at different polling



locations than they have in past elections. This summer, postcards were mailed to all registered voters in the city with polling place information. While polling place maps will be posted at every polling place location, it's easy to save yourself the hassle of showing up at the wrong polling place by doing a little reconnaissance ahead of time!

The simplest way to check your polling place location is to check the map on page 3, visit <http://pollfinder.sos.state.mn.us/> or call city hall at (952) 939-8200. Information also will be available at the city's Fire Department and Open House Event Tuesday, October 9, 5–8 p.m.

Voter turnout

Minnetonka traditionally has a very high voter turnout for presidential-year elections — usually between 80 to 90 percent. The longest lines on Election Day tend to occur first thing in the morning when many voters show up to vote before going to work, so please plan accordingly.

If you have any questions about this fall's election please call (952) 939-8200. ☺

Know the rules about election signs

WITH ELECTION SEASON FAST approaching, it's important for Minnetonka residents to be aware of the city's zoning regulations related to posting political campaign signs. Temporary political campaign signs could be posted any time after June 29, 2012, and must be removed by November 16, 2012.

Signs may not be posted on publicly owned land. On private land, the following rules for temporary political signs apply:

- Signs must be at least five feet from the edge of a public street.
- Signs must not obstruct driver visibility at intersections.
- Signs must have the approval of the underlying property owner.
- Signs must not be posted on fences, trees, shrubs or public utility poles.
- Signs must not be located within the right-of-way of state or county roads.

On election days, the following rules apply to posting signs near polling places:

- On private property, signs must be 100 feet from the door where voters will enter.
- For public property, signs must not be within 100 feet of the building in which a polling place is situated, or anywhere on the public property.

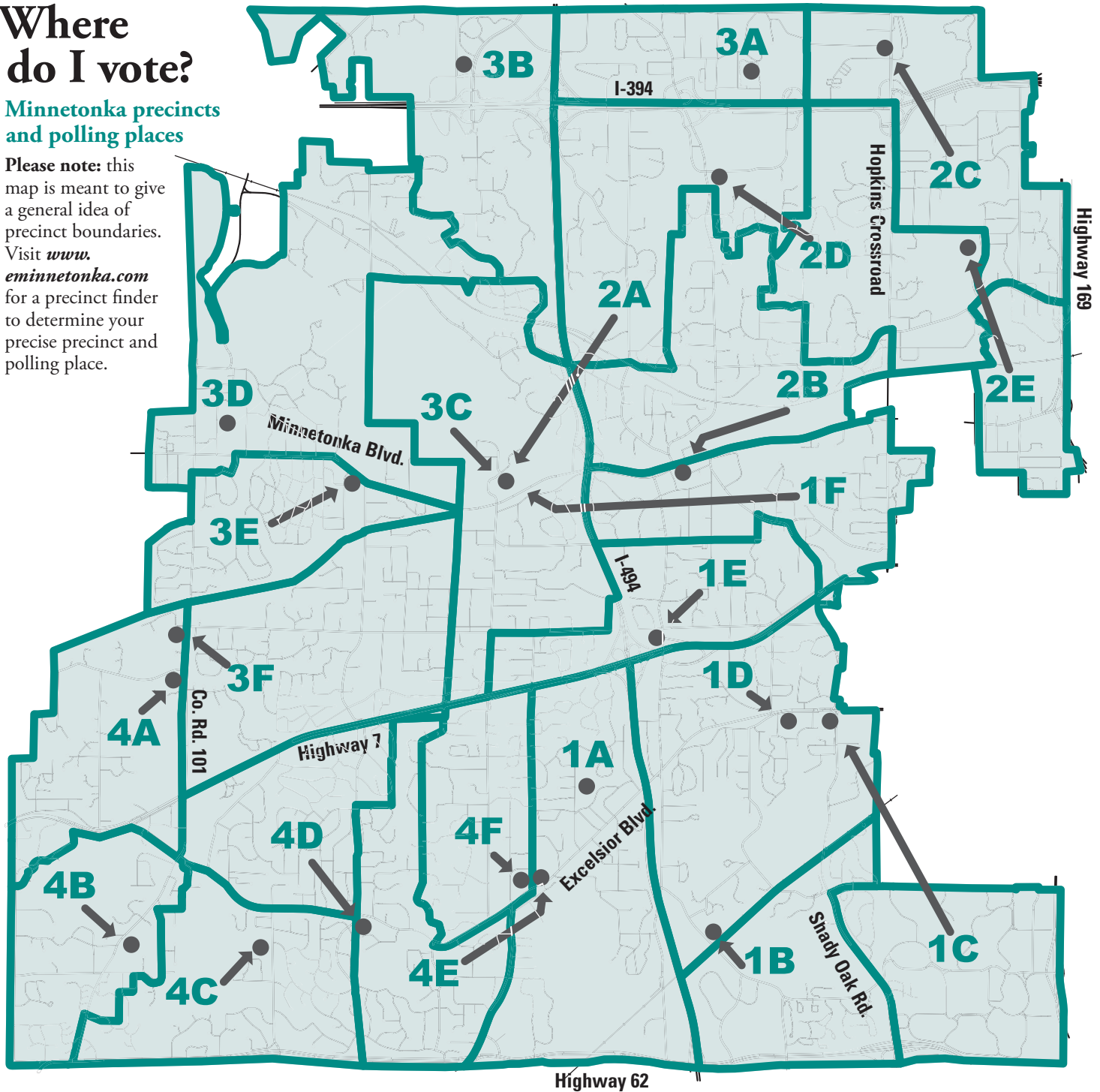


If you have questions or complaints about campaign signs, please call the planning division at (952) 939-8290. ☺

Where do I vote?

Minnetonka precincts and polling places

Please note: this map is meant to give a general idea of precinct boundaries. Visit www.eminnetonka.com for a precinct finder to determine your precise precinct and polling place.



Precinct locations in Minnetonka

- | | | | |
|--|---|--|---|
| 1A Glen Lake Elementary School
4801 Woodridge Road | 2A Minnetonka Comm. Center
14600 Minnetonka Boulevard | 3A Ridgepointe
12600 Marion Lane West | 4A Ridgewood Church
4420 County Road 101 |
| 1B Old Apostolic Luth. Church
5617 Rowland Road | 2B St. David's Church
13000 St. David's Road | 3B Freedom Pointe
500 Carlson Parkway | 4B Mtka. School Dist. Service
5621 County Road 101 |
| 1C Cross of Glory Baptist Church
4600 Shady Oak Road | 2C Oak Knoll Lutheran Church
600 Hopkins Crossroad | 3C Minnetonka Comm. Center
14600 Minnetonka Boulevard | 4C Scenic Heights Elementary
5650 Scenic Heights Drive |
| 1D Faith Presbyterian Church
12007 Excelsior Boulevard | 2D Ridgedale Henn. Cty. Library
12601 Ridgedale Drive | 3D St. Luke Presbyterian Church
3121 Groveland School Road | 4D All Saints Lutheran Church
15915 Excelsior Boulevard |
| 1E St Paul's Lutheran Church
13207 Lake Street Extension | 2E Lindbergh Center
24000 Lindbergh Drive | 3E Minnetonka Lutheran Church
16023 Minnetonka Boulevard | 4E Glen Lake Activity Center
14350 Excelsior Boulevard |
| 1F Minnetonka Comm. Center
14600 Minnetonka Boulevard | | 3F Mtka. United Methodist
17611 Lake Street Extension | 4F The Glenn
5300 Woodhill Road |

Flashpoints

From the Minnetonka Fire Department



IN FIREFIGHTING LINGO, A FLASHPOINT is the temperature at which combustible materials can burst into flame. The flashpoints in this quarterly feature, however, are not so volatile — rather, they are the initiatives and events that serve as the catalyst for the excellent service provided every day by the Minnetonka Fire Department to city residents and businesses. For more information about any of these items, call the fire department at (952) 939-8598.

Have 2 Ways Out

When fire strikes, your home could be engulfed in smoke and flames in just a few minutes. It's important to have a home fire escape plan that prepares your family to think fast and get out quickly when the smoke alarm sounds. But what if your first escape route is blocked by smoke or flames? Having two ways out should be a key part of your plan.

During National Fire Prevention Week, October 7–13, the Minnetonka Fire Department encourages you to take the following steps to protect your family from fire.

- Establish and practice using a family meeting place for home evacuations.
- Have working smoke alarms on every level and in every bedroom.
- Make sure everyone can locate a phone and call 911.
- Know two ways out of each room in your home.
- Never go back into a burning building — that's a firefighter's job.
- Buy an extinguisher and know how to use it.
- Be sure your house numbers are clearly visible from the street, day and night.
- Keep your fire hydrant clear of vegetation and snow.
- Practice, practice, practice — your escape plan!



Want a fire extinguisher practice session, or want to learn more about preventing fires? Contact Minnetonka Fire Department public educators Jim Lundeen and Sara Ahlquist at (952) 939-8331. And, be sure to stop by the fire department during the October 9 Fire Department and City Open House event (see page 1).

By the numbers

During the second quarter of 2012, the fire department responded to 441 calls for service, up from 351 calls during the same period last year. The three-person duty crew handles most calls, while about 35 paid-on-call firefighters report to structure fires.

Recreational fire reminder

Recreational fires (campfires) in the city require a permit from the Minnetonka Fire Department. Even with a permit, the burning of brush, trash or leaves is not allowed. For those who have enjoyed recreational fires over the years, consider visiting www.eminnetonka.com to stay updated on the current conditions of use for a recreational fire permit.

Please remember that smoke and the smell of smoke often carries into neighboring homes, even on calm days. In addition to the fact that not everyone likes the smell of a campfire (especially in their home), smoke is also an irritant for those who have chronic respiratory issues such as asthma, or other health problems. Beyond minding the conditions of the recreational fire permit, consider your neighbors as well. ☺



2011 Photo Contest entry,
"Campfire Comfort" by Doug Johnson

Citizen Alert Notification Sign Up ▶

Sign up for Citizen Alert

Since the Citizen Alert system was introduced earlier this year, several hundred Minnetonka residents have signed up. Here's why you should too!

By signing up, you'll be alerted about emergencies or important community alerts, however you choose — via phone, email, text message and more. Read on for the answers to some other questions frequently asked about the program:

Do I have to sign up to receive emergency alerts?

If you have a landline telephone and are listed in the telephone book, your phone number should be entered in the system to receive emergency alerts. However, it's still a good idea to sign up to ensure your telephone number is correct and you receive emergency notifications.

I'll get the emergency alerts on my landline. Why should I take the time to sign up?

By signing up for the Citizen Alert system, you can:

- Receive non-emergency community alerts, such as notification of a water main break in your area.
- Add more points of contact, such as cell phones, emails or text messages.
- Add contact information for multiple members of your household.
- Add additional locations in Minnetonka you'd like to be notified about, such as a workplace, school, church, etc.

Register at www.eminnetonka.com (click on the icon on the home page) — it only takes a few minutes! If you need assistance, call Jacque Larson, community relations manager, at (952) 939-8207. ☺

Join these October senior center activities

PLAN TO ATTEND ONE OF THESE activities offered this month for adults 55-plus, all of which are advertised in a weekly email as well as a free monthly publication, the *Minnetonka Script*. Subscribe to one or both of these publications by visiting www.eminnetonka.com, or contact Nicole Gorman at ngorman@eminnetonka.com or (952) 939-8369.

To register, or for general information about any of the activities listed below, call (952) 939-8393.

West Suburban Senior Fair

Oct. 6, 8 a.m. – 4 p.m.

Minnetonka High School
Wide variety of vendor booths and seminars. Cost is \$10 (includes breakfast and lunch); register by calling (952) 401-6800.

Garden Club

Oct. 8, 1 p.m.

Minnetonka Community Center
Learn the language of flowers, and get to know one another!

TED Program

Oct. 10, 10:30 a.m.

If you or someone you know has trouble hearing the phone ring, hearing the caller speak, holding onto a handset, dialing or talking loudly enough to be heard on the phone — then the Minnesota Telephone Equipment Distribution (TED) program can help. RSVP for this free event by Oct. 8.

Community Dance

Oct. 12, 7–10 p.m.

Castaways perform 7-10 p.m.; dance lesson offered 6:15–7 p.m. Cost: \$13, call (952) 401-6800.

Tech Demo Day

Oct. 17, 1–3 p.m.

Learn about those gadgets your kids and grandkids are using, from smartphones to

tablets. Free, call (952) 939-8393 to register.

Living Better on Less

Oct. 17, 7–8:30 p.m.

Learn how to live a richer, more meaningful life while reducing consumption, debt and stress. Cost: \$5, due by Oct. 12.

Anniversary Party

Oct. 18, 12 p.m.

Enjoy entertainment by Carol Zimmerman and friend, along with baked meatloaf, mashed potatoes, carrots, dinner roll and dessert. Cost: \$7, due by Oct. 11.

iPod or iBond

Oct. 22, 10:30 a.m.

A teenager is more likely to own a cell phone, iPod or computer than to have a bank account, and half of young working adults have saved nothing for retirement. But don't despair! Studies show that people learn the most about money management from their parents and grandparents. This seminar will show you new ideas and different ways to give the younger generation the keys to financial success. Cost: \$2, due by Oct. 19

Pops and Pie

Oct. 25, 10 a.m.

Listen to the St. Louis Park band and enjoy a piece of pie. Cost: \$3, due by Oct. 22.

Defensive Driving

To register, call the Minnesota Safety Center at 1-888-234-1294 or visit www.mnsafetycenter.org. AAA members receive \$3 off class registration by providing member number and expiration date.

Four-Hour Courses

Oct. 16, 9 a.m. – 1 p.m.

Refreshments provided (no meal). Cost: \$20

Oct. 30, 6–10 p.m.

Refreshments provided (no meal). Cost: \$20 ☺

Two spooktacular concerts in October

JOIN THE MINNETONKA SYMPHONY Orchestra and its cast of ghosts and goblins in a fun afternoon of scary and sometimes silly music, marching and laughing. Wear a costume if you like, bring the kids and relatives, and have a great time at the Halloween Spooktacular! Two performances in October:

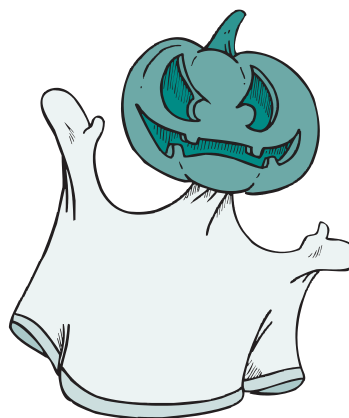
Sunday, October 21, 3 p.m.

Minnetonka Community Center
14600 Minnetonka Boulevard,
Minnetonka

Sunday, October 28, 3 p.m.

MN Landscape Arboretum
3675 Arboretum Drive, Chaska

For more information, call the Music Association of Minnetonka at (952) 401-5954 or visit www.musicassociation.org. ☺



Historical society hosts fall meeting

HAVE YOU EVER WONDERED why the only portion of Lake Minnetonka in the city of Minnetonka is named Gray's Bay?

Learn about Minnetonka pioneers Amos and Susan Gray, for whom Gray's Bay is named, at a Minnetonka Historical Society program Tuesday, October 2, at 7 p.m. in the community room of the Minnetonka Community Center, 14600 Minnetonka Boulevard.

Presenters Kate Getten Vlach and Deanne Straka, the great-great grandchildren of Amos and Susan, have compiled extensive research on their family and look forward to sharing a slide show and discussion with the audience. Everyone is welcomed to attend this program. ☺

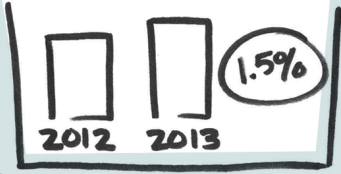


Attend a community dance October 12.

MINNETONKA MIKE PRESENTS "PROPERTY TAXES 101"

I'm Minnetonka Mike and I've got some good news about the city's 2013 preliminary levy and budget!

As a Minnetonka property owner, I'd love some good news.



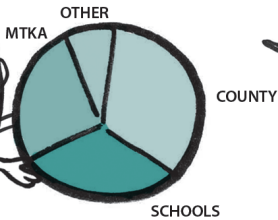
So, what does that mean to me?



Besides the reassurance that your city is fiscally responsible, it also means the median-valued home in Minnetonka is estimated to experience a **decrease of about 1% in the city portion of property taxes.**

Let's start with an estimated levy increase limited to only 1.5% — that's one of the lowest rates among comparable cities, and actually below the rate of inflation.

What do you mean "the city portion?"



Well, city property taxes are only one part of your overall property tax bill.



Wow, that's a lot to cover. How is the city able to keep the increase to only 1.5%?

Fiscal responsibility — things like no new staff in 2013, innovative and creative thinking, and cooperative service agreements with other agencies.

In short, it's the result of a responsible, long-term perspective to ensure quality services at a reasonable price.



Ok, so what does the "city portion" of my property taxes pay for?

Property tax revenue pays for the basics --- public safety, roads and parks.



OK, I guess that's good news. But if my city property taxes are decreasing, does that mean that my property value is also going down?

Not necessarily.

I may be able to shed some light on that.



I don't get that. Why wouldn't my property's value relate directly to my property taxes?

You received your property valuation statement back in March, right?



Yes — and that value determines my property taxes, right?

NEXT PAGE

"PROPERTY TAXES 101" CONTINUED

Actually, your property's value is only ONE of the many factors that determine your property taxes.



Other things may include:

- The value of commercial properties compared to residential properties.
- Commercial sale prices in Minnetonka compared to those elsewhere in the metro.
- Property tax changes by the county and your school district.

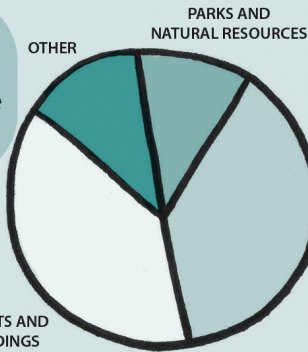


Factors that affect your property taxes are governed by state policies and laws. Some of these rules put your property value through a filter of sorts, resulting in different "tax capacity" percentages for various types of properties such as residential homestead, rentals, recreational and commercial.



These filtered tax capacity percentages, combined with your property's market value, are considered to be a more fair and accurate representation of ALL tax-related factors, instead of using your property value alone.

CITY PROPERTY TAXES PAY FOR:



What about the fees I pay for water and for the Williston Center?



STREETS AND BUILDINGS

Actually, the tax capacity is used together with the revenue needed by the city to pay for basic services.



PUBLIC SAFETY

Property tax income is about half of the city's total revenue. The rest of the revenue comes from the fees you mention including utilities, licenses and permits and user fees.

I guess that makes sense. And that tax capacity percentage is then used to determine my property taxes?



How can I provide input about the 2013 preliminary levy and budget?



I had no idea so many factors besides my property value went into determining my property taxes. So that's why some years my property value goes down, but my property taxes go up?



Yes. Bottom line, the calculation is complicated but it's done in an effort to create fair and controlled rates.



The city always encourages feedback. Comment at www.eminnetonka.com; contact Finance Director Merrill King at mking@eminnetonka.com or (952)939-8200; or attend a public hearing Monday, Dec. 3, at 6:30 p.m. in the Council Chambers, 14600 Minnetonka Boulevard, Minnetonka. The city wants to hear from you!

Follow us on Twitter!



GET YOUR NEWS DELIVERED VIA “tweets!” Stay up to date on all the news that matters by following the city on Twitter: [@MinnetonkaMN](https://twitter.com/MinnetonkaMN). ∞

Last fall buckthorn workshop is Oct. 4

HAVE YOU BEEN REMOVING BUCKTHORN, but wonder if there might be an easier way? “Managing Woodlands: Buckthorn and Beyond” can help you get out and mark native species among the buckthorn before the leaves drop. Attend this season’s last workshop Thursday, Oct. 4, from 6:30 – 8:30 p.m., at the Minnetonka Community Center, 14600 Minnetonka Blvd., Minnetonka.

This free workshop is hosted by Janet Van Sloun, city of Minnetonka natural resource specialist. Handouts will be provided. Please RSVP online at www.eminnetonka.com or call Minnetonka Public Works at (952) 988-8400. ∞

Every curb is a shoreline

THIS FALL, REMEMBER THAT STORM drains are connected to ponds, creeks and wetlands. To protect these water bodies, remember the following:

- Don’t put leaves in the street or in the storm sewer system. To dispose of your leaves, use the leaf and brush drop-off provided by the city, contact your garbage hauler (see page 11), or use a mulching mower to chop up leaves so they can nourish your lawn (see article on page 10).
- If you live in a townhome, apartment or condominium, talk to your association leadership about encouraging snow removal contractors to reduce their salt use. Salt is harmful to water bodies, so remember to use it only if needed — shovel first when possible. ∞

Stay safe when using city trails and roads

WITH FALL JUST AROUND THE corner, more and more people are out enjoying the trails and roads in Minnetonka.

Minnetonka trails are shared by bicyclists, hikers, runners, walkers and dog walkers. Please respect the rights of others when using the trails, and follow these tips for a safe and enjoyable trail experience.

- Pass on the left, and only when safe. Pass in single file.
- When overtaking fellow trail users, warn them by activating a bell, horn or whistle and saying, “Passing on your left” or “passing.”
- Yield to slower trail users.
- Proceed at a reasonable speed (15 mph maximum speed on trails).
- Dogs must be on a short leash (six feet or less).
- Pick up and properly dispose of pet waste. Dispensers with bags for picking up pet waste are placed along the trail. Please use them!

- Travel on the right side of the trail. If you stop, move off the trail.
- Obey all traffic signs.
- Stop at road crossings and look for approaching and turning vehicles.
- Signal your turn.
- Proceed slowly around blind curves, steep hills and bridges.
- Watch for wet or slippery surfaces, sand, acorns, rocks or washouts.
- Travel in pairs if possible.
- Trails close at 10 p.m.

Call 9-1-1 for emergencies. For comments or concerns about the trails, or to receive a trails map, call (952) 988-8400. Enjoy the trails!

While on the roads

Many walkers and bicyclists use city roads. To stay safe, please follow these tips.

When biking on the road:

- Ride on the right side of the road, with traffic.
- Always wear a helmet.
- Watch for turning vehicles to make sure they see you.
- Walk your bike across busy intersections.
- Yield to pedestrians.
- Obey traffic laws, including stop signs and traffic lights.

When walking on the road:

- If there is no sidewalk and you have to walk on the road, walk facing traffic.
- Wear bright-colored clothing.
- Be aware of your surroundings.
- Keep away from parked cars so drivers can see you
- Cross only at intersections or crosswalks — never in the middle of the block.
- If walking a pet, pick up and properly dispose of pet waste. ∞



2008 Photo Contest entry,
“Walk in the Park”

Please note: Park restrooms, drinking fountains close for winter

In October, park staff will shut down and winterize outdoor drinking fountains and restrooms at Big Willow, Guiliams and Lone Lake parks in Minnetonka. Restrooms are available year-round at Meadow, GroTonka and Purgatory parks.

Victorian holiday at Burwell House set for December 2

IF YOU'RE ALREADY PLANNING YOUR holiday calendar, be sure to mark Sunday, December 2, 1–4 p.m., for the annual Victorian holiday open house at the Charles H. Burwell House, 13209 E. McGinty Road, Minnetonka.

The house will be decorated in Victorian holiday fashion, and self-guided tours will be offered along with refreshments. Attendance is free, but donations to the Minnetonka Historical Society are appreciated. Limited parking is available on the Burwell grounds, including handicapped spaces, with additional parking across Plymouth Road at St. David's Family Resource Center. The Burwell House is owned and operated by the city of Minnetonka. ☺



Register now for winter youth basketball

Youth basketball league (register by Oct. 12)

Join the Hopkins-Minnetonka Youth Basketball League, an in-house recreational league for boys and girls in grades 2–6 living in the Hopkins—Minnetonka area. Separate boys and girls teams are formed by school and grade. Games will be played on Saturdays starting December 1 and concluding on February 2 for second graders and February 23 for grades 3–6. Grades 3–6 will have one weekday evening practice starting the week of November 12. For second grade only, practice will be held on Saturday before each game starting December 1. The cost is \$45 for Grade 2 and \$85 for Grades 3–6, through September 14. Price increases to \$55 and \$95 between September 15 and October 12. Volunteer coaches are needed for this program. Teams are formed by school and grade. Please call Recreation Services at (952) 939-8203 to register.

First Grade Little Dribblers

This program introduces boys and girls to

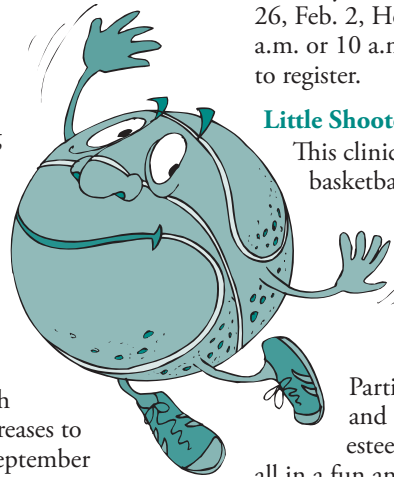
the game of basketball through activities and group games that focus on skill development and fun! Development of skills and introduction to the rules of the game will prepare the young player for the youth basketball league starting in second grade. The sessions will be led by instructors from Minnesota Developmental Basketball. Fee includes a Little Dribblers t-shirt. Saturdays: December 8, 15, January 12, 19, 26, Feb. 2, Hopkins West Junior High, 9 a.m. or 10 a.m., \$45. Call (952) 939-8203 to register.

Little Shooter's Basketball Clinic

This clinic is led by experienced basketball camp organizer Kevin Lynch, a former Mr.

Basketball of Minnesota, All-Big Ten guard at the University of Minnesota and NBA player with the Charlotte Hornets.

Participants will learn basic skills and techniques and cultivate self-esteem, teamwork and fair play — all in a fun and challenging environment. Each participant receives a camp t-shirt. The Little Shooter's Clinic is a great way to prepare for the upcoming Youth Basketball League! Saturdays, October 27–November 17, 9:30–11:30 a.m., Grades 2–5, Hopkins West Junior High, \$75. Call (952) 939-8203 to register. ☺



The Landing Shop

LOOKING FOR A UNIQUE GIFT? STOP BY The Landing Shop at 11280 Wayzata Blvd., Minnetonka, for bird houses, kitchen items, home décor, baby items, quilts, books by local authors, handmade purses and more. Shop is open Wednesday–Saturday from 10 a.m. to 4 p.m. The Landing Shop is a program of Minnetonka Senior Services. ☺



Nominations for 2013 Reflections Award due November 14

DO YOU KNOW OF AN INDIVIDUAL, business or program that consistently works to make Minnetonka a great community? Then consider nominating that person or organization for a 2013 Reflections Award!

The biennial Reflections Award program was created in 1997 to recognize

individuals, businesses and programs whose outstanding contributions reflect positively on Minnetonka. The Minnetonka Community Commission reviews applications and recommends awards to be presented by the Minnetonka City Council.

To be considered for the 2013 awards, to be presented at a council meeting in January

2013, the city must receive a completed application by November 14, 2012. For an application, visit the city's website at www.eminnetonka.com; pick one up at city hall; or call Jacque Larson, community relations manager, at (952) 939-8207, and one will be mailed to you. ☺

Keep guns safe from children

IF YOU OWN A GUN, AND THERE ARE children in your home, please follow these guidelines:

- Always store guns in a locked cabinet or safe. Don't try to hide a gun in the house thinking that a child will never find it.
- Tell your child that a firearm isn't a toy. Instruct children that if they find a gun, they shouldn't touch it – they should stay away from it and tell an adult immediately.
- Lead by example, since actions speak louder than words. Young children learn by watching, so when you handle your gun responsibly your child will develop good safety habits.

The Minnetonka Police Departments offers free gun safety locks to Minnetonka residents. Provided by Project ChildSafe, these cable-style gun locks provide an extra level of safety when used properly. Locks are available at the Minnetonka Police Department, Monday – Friday, 8 a.m. – 4:30 p.m.

Developed by the National Shooting Sports Foundation, Project ChildSafe is a nationwide program whose purpose is to promote safe firearms handling and storage practices among all firearms owners. Project ChildSafe operates in cooperation with law enforcement departments to provide firearm safety kits free of charge to gun owners. ☺



The Minnetonka Police Department offers free gun safety locks.

Wrestling with yard waste this autumn?

BRANCHES, LEAVES, GRASS CLIPPINGS — from spring through fall, the question of what to do with all that yard waste is an ongoing dilemma. Dispose of it improperly, and you risk damaging woods, wetlands, lakes and wildlife — or jeopardizing your own health and safety.

Get creative and reuse your yard waste:

- Mix leaves and grass clippings together, then allow them to decompose. Use the resulting compost to mix or spread into landscape or garden beds as a free, safe and slow-release fertilizer.
- Large branches can be used as decoration in a garden, along the edge of a walking path or to slow erosion on a steep slope.
- Wood may be burned safely in a fireplace or recreational firepit — but never burn leaves, grass clippings, weeds or garbage. Be considerate of neighbors when burning so that smoke doesn't enter neighboring homes. Keep wood close to its original source to avoid spreading tree diseases and potentially harmful insects like emerald ash borer.

Once your creativity is exhausted, dispose of remaining yard waste as follows:

- Use the curbside yard waste pickup offered by your garbage hauler. Be sure to use compostable bags.
- Loads of branches or leaves may be brought into the city dropoff at Minnetonka Public Works (see page 11 for details).

No discussion of yard waste would be complete without adding what NOT to do:

- Don't deposit leaves, branches, grass clippings and logs into drainage ditches

Mulching and composting made easy

WHAT'S THE EASIEST WAY to mulch and compost your leaves? Your lawnmower! Mulching mowers work best, but an ordinary mower with a sharp blade can also work. Just mow dry leaves into the lawn, making sure they are thoroughly pulverized by the mower (you don't want pieces covering the grass). Make several passes in different directions, or try mowing frequently (at least weekly) when the leaves are falling. The pieces will decompose into the soil over the winter and spring. It beats raking, and keeps nutrients in the lawn! ☺

or other waterways. It can block water flow and cause flooding, and create erosion or make existing erosion worse.

- Don't burn yard wastes. Yard waste fires can easily spread out of control and release pollutants into the air.
- Don't dump on city property. It's unsightly and illegal. Yard wastes smother existing vegetation and make homes for weeds, and can take years to decompose. Wildlife rely on the native plants and insects that live in the undisturbed soil of natural areas.
- Don't blow, rake or deposit yard wastes into the street, wetlands, creeks or other water bodies. They may plug the storm sewer and create road flooding, and once washed into water bodies, increase the growth of algae and weeds. ☺

Visit the farmers' market through Oct. 2

THE MINNETONKA FARMERS' MARKET takes place every Tuesday, from 3–7 p.m., through October 2, in the Minnetonka Ice Arena B parking lot, located at the Minnetonka Civic Center Campus at 14600 Minnetonka Boulevard, Minnetonka.

Visit vendors selling produce, meat, canned goods, salsa, honey, baked goods, flowers, sauces, apples and crafts. Concessions are also available — fresh-popped popcorn, canned soda and bottled

water from the Minnetonka Senior Center volunteers. All proceeds benefit the Minnetonka Senior Center. Parking is available in the city hall parking lot or the Ice Arena A parking lot.

Want to be sure you know what's happening each week? Sign up for the farmers' market e-newsletter, delivered to your email each Monday with that week's market news! Visit www.eminnetonka.com for information. ☺

 **2012 MINNETONKA RECYCLING UPDATE**

Fall Leaf Drop-Off Program

Open through November 18

Public Works Facility
 11522 Minnetonka Blvd., ¼ mi. west of Cty. Rd. 73
 Enter on the west side of the building (near the Big Willow ball fields)

Leaves and non-woody yard waste (grass, weeds, pine cones and needles, garden trimmings, fruit, etc.) will be accepted from Minnetonka residents at Minnetonka Public Works, 11522 Minnetonka Blvd., on the following days and times in October (same as the brush drop-off hours). Extended drop-off days are offered in November:

- **Mondays:** 12 p.m. to 8 p.m. Oct. 1, 8, 15, 22, 29; Nov. 5, 12
- **Tuesdays:** 12 p.m. to 8 p.m. Oct. 2, 9, 16, 23, 30; Nov. 6, 13
- **Fridays:** 12 p.m. to 6 p.m. Nov. 2, 9, 16
- **Saturdays:** 7 a.m. to 3 p.m. Oct. 6, 13, 20, 27; Nov. 3, 10, 17
- **Sundays:** 12 p.m. to 4 p.m. Nov. 4, 11, 18

Proper identification to verify Minnetonka residency (driver's license, state ID, or Minnetonka utility bill) is required each time a resident enters the site.

The city leaf drop-off site is bag-free. Residents will unbag their leaves and yard waste at the large bulk leaf pile and take all empty bags home for reuse or disposal — including paper and compostable bags.

Loads of leaves must be covered during transport! The suggested method of loading and transport is to use many tarps, each with a layer of leaves a foot or less. Use the tarps to gather up and move small piles of leaves from your yard to your trailer or vehicle, continuing to use lots of tarps until the vehicle is full. This makes unloading your leaves much faster and easier at the site, since all you need to do is flip the tarps one at a time to dump the leaves. If you don't use this method, please bring

proper equipment, such as a stout pitch fork, to unload your truck or trailer load of leaves.

Sticks and branches smaller than ½" in diameter are acceptable with leaves. Anything larger than ½" in diameter goes to the brush drop-off pile.

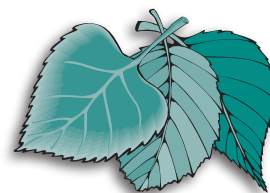
If you have other means of disposing of your leaves, such as collection by your garbage hauler or backyard composting, please use that option. For a fee (annual, monthly or per cart or bag), all garbage haulers offer curbside collection of yard waste on the same day as your garbage collection. The hauler yard waste collection usually runs April through November. Check with your garbage hauler for details. Please note state law requires using proper compostable bags for curbside collection of bagged yard waste — plastic bags are not acceptable. ♻️

Drop off brush through Nov. 18

The brush drop-off program for Minnetonka residents is open Mondays and Tuesdays from noon to 8 p.m. and Saturdays from 7 a.m. to 3 p.m. Branches up to 12" in diameter will be accepted. This service is only available to Minnetonka residents. Proper I.D. proving residency is required each time a resident enters the site (driver's license, state ID or Minnetonka utility bill).

Please note: trash, metal, plastics, concrete, lumber, fences or wood scraps are not accepted. **Do not** bring these materials with your load of brush.

Do not put grass, loose leaves, dirt, sod or other non-woody materials in with the brush pile.



The brush drop-off is located at Minnetonka Public Works, 11522 Minnetonka Blvd. Use the west entrance near the Big Willow Park ball fields.

No brush will be accepted from commercial tree or lawn services. Brush drop-off closes November 18. For more information call (952) 988-8430. ♻️

Pay your municipal utility bills online

Tired of dealing with paper utility bills from the city? Now you can receive and pay your municipal utility bills (water and sewer) electronically.

You can also choose to pay your bill online, either one time or on a recurring basis, using a credit card or bank account withdrawal.



It's easy to sign up and it's free! To sign up, grab your latest bill and look for this logo at www.eminnetonka.com. Click on the logo and follow the instruction. Questions? Call (952) 939-8200. ♻️

Do you know what to throw? Take a quiz to find out!

Hennepin County residents currently only recycle about 38% of the more than one million tons of waste they produce each year. By 2015, Hennepin County has set a goal to increase that percentage to 50%. Do you know what to throw and what to recycle? Visit www.recyclehalf.com to take a short online quiz to test your recycling knowledge. You might be surprised by some of the items that can be recycled. Once you've completed the quiz, take the Recycle by Half pledge!



minnetonka memo

October 2012



PRESORTED
STANDARD
U.S. POSTAGE
PAID
CITY OF MINNETONKA

A publication of the city of Minnetonka
14600 Minnetonka Boulevard, Minnetonka, MN 55345 • (952) 939-8200
8 a.m. to 4:30 p.m. Monday–Friday

Mayor Terry Schneider.....(952) 939-8389 Home: (952) 934-9529tschneider@eminnetonka.com Meetings with the mayor may be scheduled by calling (952) 939-8211.	Council <i>At Large:</i> Dick Allendorf... (952) 933-6231 dallendorf@eminnetonka.com Patty Acomb... (952) 807-8635 pacomb@eminnetonka.com <i>Ward 1:</i> Bob Ellingson (952) 931-3065 bellingson@eminnetonka.com <i>Ward 2:</i> Tony Wagner..... (952) 512-1817 twagner@eminnetonka.com <i>Ward 3:</i> Brad Wiersum.... (612) 723-3907 bwiersum@eminnetonka.com <i>Ward 4:</i> James Hiller (952) 974-1003 jhiller@eminnetonka.com
City Manager Geralyn Barone.....(952) 939-8200	Minnetonka Mike (952) 939-8586 mike@eminnetonka.com
Newsletter Editor Jacque Larson.....(952) 939-8200	POLICE-FIRE: Emergency 9-1-1
E-mail: comments@eminnetonka.com	Non-emergency (952) 939-8500 or 9-1-1
Internet: www.eminnetonka.com	

ECRWSS
POSTAL PATRON

Calendar

City of
Minnetonka

October
2012

Call (952) 939-8200
for meeting
locations.

S	M	T	W	T	F	S	Call (952) 939-8200 for meeting locations.
	1	2	3	4	5	6	2 Minnetonka Farmers' Market, 3–7 p.m. 15 City Council Study Session, 6:30 p.m.
7	8	9	10	11	12	13	3 Park Board, 7 p.m. 18 Planning Commission, 6:30 p.m.
14	15	16	17	18	19	20	4 Planning Commission, 6:30 p.m. 22 Community Commission, 6:30 p.m.
21	22	23	24	25	26	27	8 City Council, 6:30 p.m. 25 Economic Development Authority Commission, 6 p.m.
28	29	30	31				9 Senior Advisory Board, 10 a.m.; City Open House, 5–8 p.m. (see page 1) 29 City Council, 6:30 p.m.

All meetings listed above are open to the public. Meeting dates and times are subject to change—please check www.eminnetonka.com for the latest information.

Minnetonka City Council and Planning Commission meetings are broadcast live on cable channel 16, and replays are available Mondays and Wednesdays at 6:30 p.m.; Fridays and Saturdays at noon, or anytime via videostream at www.eminnetonka.com. Agendas for council meetings are available on the city's website by the Friday afternoon prior to the meeting, and planning commission agendas are available by the Monday prior to the meeting.

Staying informed about city projects

THE CITY REGULARLY RECEIVES applications for projects that require planning commission and/or city council approval. Information on these, as well as many other city projects, is regularly updated on the city's website. If you'd like to stay informed, visit "MyMinnetonka" at www.eminnetonka.com—click on "MyMinnetonka" under "Top Picks." Through MyMinnetonka, you can learn about new projects in the city; provide online feedback on projects during their approval process, and receive email updates on projects. Planning commission meeting agendas are posted the Monday prior to the meeting. Visit www.eminnetonka.com for information. ∞

Fall Fun Fest set for October 21

ENJOY A DAY OF OUTDOOR FALL FUN with children ages 1–10, Sunday, October 21, 1–3 p.m. at the Minnetonka Outdoor Amphitheater, 14600 Minnetonka Boulevard, Minnetonka.

Activities include musical entertainment by Jack Pearson, storytellers, hayrides, face painting, pumpkin painting, hot apple cider by the fire, games, treats and more! Costumes are encouraged, but not required.

Registration is required for this event. All registered participants will receive a treat bag. Children must be accompanied by an adult. Adults are **free!** In case of rain, the event will be moved into the Minnetonka Community Center. Cost: \$8 per child. Call (952) 939-8203 to register. ∞



The paper in this newsletter was manufactured with electricity in the form of renewable energy (wind, hydro, and biogas).

