

minnetonka memo

*A Newsletter from the City of Minnetonka
May 2011*

Register now for June 25 Minnetonka Summer Festival events



Register now for June 25 golf tournament.

BRING THE ENTIRE FAMILY TO THE Minnetonka Summer Festival Saturday, June 25, for children's rides, a petting zoo, ice skating, musical entertainment and much more! It all takes place on the grounds of the Minnetonka Civic Center campus. **Again this year, the Children's Tot Trot will take place at 4 p.m. for ages 2–8, and registration is not required.**

Also on June 25, don't miss the Old-Fashioned Ice Cream Social at Burwell House, complete with free tours, entertainment and an arts, crafts and collectibles market.

The day will conclude with the annual fireworks display—a grand finale to the day's events. A detailed schedule of events will be published in the June *Minnetonka Memo*.

Registrations are being accepted now for the following athletic events held in conjunction with the Summer Festival:

8K Race and Children's Tot Trot

Starting at 7:30 a.m. June 25, this certified 8K race course travels through a beautiful wooded area that is generally flat, with some

rolling hills. The 8k race begins and ends in front of the Minnetonka Ice Arena. Call (952) 939-8203 to register or for more information.

The Children's Tot Trot will take place at 4 p.m. for ages 2–8. Registration is not required. Check in at the Summer Festival Information Tent.

Softball Tournament

This one-day men's softball tournament is held Saturday, June 25, at Big Willow Park in Minnetonka and Central Park in Hopkins. The tournament is limited to 12 teams with each team guaranteed at least three games. Entry fee is \$100 per team. Call (952) 939-8203 to request a registration form.

Adult/Child Golf Tournament

A family-oriented golf tournament will be held Saturday, June 25, at the Glen Lake Golf and Practice Center in Minnetonka. The entry fee of \$30 per team includes golfing and many contests and prizes throughout the tournament. Children must be 8 and older to participate. Call (952) 939-8203 to register and refer to Course #21307. ☺

Filings open May 17 for fall election

THE CITY OF MINNETONKA WILL HOLD municipal elections this fall. City positions that will be on the November 8, 2011, general election ballot include the four ward councilmember positions. Filings for these offices open Tuesday, May 17, and remain open through Tuesday, May 31.

Interested persons may file for these offices during regular city hall hours, 8 a.m. to 4:30 p.m., Monday through Friday. The filing fee is \$5. Please note city offices will be closed for Memorial Day Monday, May 30.

To be eligible for office, candidates must be at least 21 years of age upon assuming office, and be a resident of Minnetonka for at least 30 days prior to the general election. A person elected to represent a particular ward must reside in that ward.

A primary will be held Tuesday, August 9, 2011, if more than two people file for any of these offices.

The filing period and primary are earlier than in the past because of law changes that require absentee ballots to be available 45 days prior to an election.

All three school districts (Hopkins, Minnetonka, and Wayzata) will have school board positions on the fall ballot. We do not yet know if they will have referendum questions. People interested in filing for school district offices must contact the district offices.

Questions about the election process or filings may be directed to the city clerk's office, (952) 939-8218 or (952) 939-8219, or by contacting dmaeda@eminnetonka.com or ironbeck@eminnetonka.com. ☺

Eco Fun Fest is June 9

ATTEND THE NATIVE PLANT MARKET and Eco Fun Fest Thursday, June 9, from 3:30–7:30 p.m. at the Minnetonka Civic Center Campus, 14600 Minnetonka Boulevard, Minnetonka. Turn to page 6 to learn more about this family friendly event and see a full schedule of activities. ☺



Kids can try climbing trees with a rope and saddle at the June 9 Eco Fun Fest.

Music in the Park starts Tuesday, June 7

MARK YOUR CALENDARS NOW FOR THE 2011 Music in the Park concert series, set for Tuesdays, 7–8:30 p.m. starting June 7. Concerts are at the outdoor amphitheater at the Minnetonka Civic Center Campus, 14600 Minnetonka Blvd., Minnetonka. Also, June 14–16, enjoy Theater in the Park, presented by the Minnetonka Community Theatre.



- **June 7** — Jeff Carver, Carol Zimmerman (*smooth jazz/pop*)
- **June 14–16** — Minnetonka Community Theater presents “Rugrats: A Live Adventure” (*11 a.m. performances June 14, 15 and 16; additional 7 p.m. performance June 14*)
- **June 21** — Brio Brass (*30-piece, brassy jazz*)
- **June 28** — Lehto and Wright (*Celtic, folk rock*)
- **July 5** — Don King Blues Band and Friends (*blues*)
- **July 12** — Eden Prairie Community Band (*45-piece band*)
- **July 19** — Tom Hunter Quartet (*blues, Jazz*)
- **July 26** — Jumpin’ Jehosafats (*Dixieland, gospel and all that jazz*)
- **Aug 2** — Blue Feelin’ (*acoustic blues*) ∞

Council reviews city’s mission and goals

THE MINNETONKA CITY COUNCIL IS reviewing the city’s mission, vision and strategic goals, and is considering revisions that will help guide the city’s future priorities and policies.

Minnetonka residents are invited to provide their input on these new strategic statements and guidelines at a public hearing May 16 at 6:30 p.m.

Below is a brief overview of the proposed goals and principles. For a complete copy, including specific strategies, please visit www.eminnetonka.com or call (952) 939-8200.

Mission

Our purpose is to provide the core public services our community residents and businesses rely upon in their daily lives, while striving to preserve and enhance the distinctive character that makes Minnetonka a special place to live.

Vision

Minnetonka will be the community of choice where people live, work, play and conduct business in a naturally beautiful environment.

Guiding Principles

- We will focus on excellent **customer service** by striving to do the right thing, at the right time, for the right reason.

- We will set the standard for **innovative leadership** by forging collaborative partnerships, adopting new technologies and promoting effective service delivery.
- We will foster **open and inclusive communication** to encourage community involvement, and to maintain the trust and respect of those we serve.
- We will live our **shared values** of authentic communication, contagious enthusiasm, shared success, outcome focused teamwork, adaptable learning and innovation, and healthy human relationships.

Goals

- We will be **responsible stewards** of the city’s physical assets, human capital and financial resources.
- We will protect and enhance the unique **natural environment** of our community.
- We will maintain quality **public safety** for our residents and businesses.
- We will work to meet the **transportation** needs of our residents and businesses.
- We will support well-planned, responsible **community development**.
- We will provide excellent **recreational** amenities. ∞

Step To It Challenge kicks off May 9

DO YOU HAVE A COMPETITIVE SPIRIT? Do you want a fun and easy way to get in shape this spring? Then find those walking shoes or oil that bike chain and get ready for the four-week Step To It Challenge from May 9–June 5! Minnetonka is one of 22 Hennepin County communities taking the challenge!

Get active with your community!

The Step To It Challenge is a fun, free, lighted-hearted way to connect with family, friends, and neighbors, and get moving again after a long winter. Participating cities compete to see which one has the most active residents and participants from each city will have a chance to be honored by Hennepin County and the Minnesota Twins at a Twins home game during the 2011 season. This event is for everyone — the entire family can join in the fun! If you live or work in Minnetonka you qualify!

How does it work?

As a Step To It participant, you will keep an ongoing total of the steps you take during the challenge. Using an activity conversion chart at www.steptoit.org, other activities such as biking, skateboarding, tai chi, or even just mowing the lawn can count toward overall steps. A web site will allow you to record your steps online, or your step total can be called in or faxed. Best of all, it’s free! Register online at www.steptoit.org.

Kick-Off Event

Attend the Step To It Challenge kick-off event Monday, May 9, at 5:30 p.m. at the Minnetonka Middle School East track and football field, 17000 Lake St. Ext., Minnetonka.

The kick-off event will feature treats and a visit by T.C., the official mascot of the Minnesota Twins. Come for a walk around the track to kickstart this year’s challenge. No registration is necessary for this community event. ∞



Williston Fitness Center grand re-opening is May 15

THE WILLISTON FITNESS CENTER IS nearing the end of its year-long renovation. To celebrate the project completion, join a grand re-opening event Sunday, May 15, from 10 a.m. to 3 p.m. **Please note:** ribbon cutting will take place at 1 p.m., not 9:45 a.m. as originally advertised.

Come see the new pools, hot tub, locker rooms, fitness area, multipurpose studio and play structure, and enjoy displays from a variety of local companies. Event activities include swimming, facility tours, batting cages, face painting, giveaways and access to the play structure, batting cages and fitness room. This event is free, so bring your family and friends! ♻️



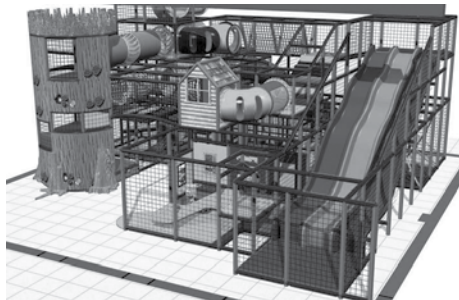
Artist rendering of new Williston Center entrance



Swimming pool



Hot tub



Artist rendering of play structure



Locker room

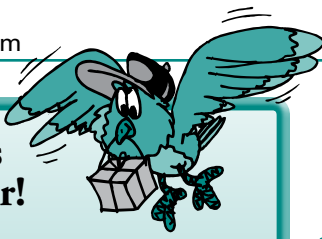


Exercise equipment



Splash pad and frog slide

Follow us on Twitter!



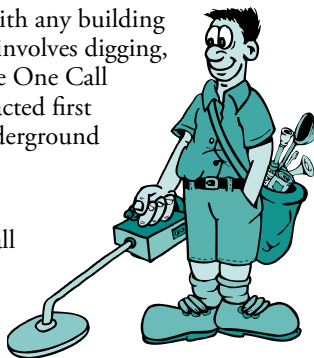
GET YOUR NEWS DELIVERED VIA “tweets!” You can receive news releases, project updates, meeting agendas and minutes, and much more, by following the city on Twitter at <http://twitter.com/MinnetonkaMN>. ☺

Building permit process streamlined

IF YOU’VE BEEN DREAMING ALL WINTER of a summer building project, improvements to the city’s permitting process may help that dream become reality more quickly!

- The city has implemented a “**fast track permit review process**” for residential construction projects. A fast track permit is available for projects that provide a completed building permit application, professionally prepared plans and a property survey. With this completed application and information, the city will review these building permits within one week — half of the normal review time.
- As a reminder, **new homes and additions to existing homes are required to provide a survey** prepared by a registered surveyor that shows property lines, existing and proposed improvements. The survey ensures that improvements will be built in the correct location and prevents future property line issues.
- To assist in planning for your project and finding your property location, the city has **metal detectors/locators available for loan, free of charge**. These locators will assist in finding property line monuments and as well as other underground features. Any resident or contractor working in the city can check out a locator free of charge. As with any building project that involves digging, Gopher State One Call should be contacted first to locate underground utilities.

For more information, call (952) 939-8200. Happy building season! ☺



Conserve water—it’s the right thing to do

AMERICANS USE LARGE QUANTITIES OF water inside their homes — the average family of four can use 400 gallons of water every day, and 70% of that water is used indoors.

The biggest culprit for indoor water use is the bathroom. Almost every activity or daily routine that happens in the bathroom uses a lot of water. The toilet alone can use a whopping 27% of household water! For example:

- Older toilets use between 3.5 and 7 gallons of water per flush. Switch to a WaterSense labeled toilet, and you’ll reduce water use by at least 75%!
- A leaky toilet can waste about 200 gallons of water every day.
- A bathroom faucet generally runs at 2 gallons of water per minute. By turning off the tap while brushing your teeth or shaving, you can save more than 200 gallons of water per month.

Outside the bathroom, there are many more ways to save water.

- High-efficiency washing machines can conserve large amounts of water. Traditional models use between 27 and 54 gallons per load, while new energy- and water-conserving models (front- or top-loading, non-agitator) use less than 27 gallons per load.
- Washing the dishes with an open tap can use up to 20 gallons of water. Instead, fill a sink or a bowl and close the tap to save 10 of those gallons.
- Keep a pitcher of water in the refrigerator instead of running the tap until it’s cold.
- Don’t rinse dishes prior to loading the dishwasher — you’ll save 10 gallons of water per load.

This article was adapted from a publication of WaterSense, a partnership program sponsored by the U.S. Environmental Protection Agency to help families and businesses realize they can reduce water use by 20 to 30 percent through a few simple measures. For more information visit www.epa.gov/watersense.

Next month, learn how to conserve water outdoors! ☺

Sewer backups: a homeowner’s nightmare

SEWER BACK-UPS OCCUR, DESPITE THE best of maintenance programs. If the city is negligent, the city’s insurance will reimburse for your clean-up costs. However, almost all sewer back-ups occur from circumstances beyond the control of the city or the property owner. Here’s what you can do:

- **Talk to the agent who writes your homeowner’s policy.** Ask if you have coverage for sewer back-up occurrences. This coverage is automatic in some policies, but in other cases you need to get special or additional coverage. The premium is usually not too significant, and the coverage may be just what you need to clean up the mess.
- **If you have your private sewer mainline cleaned, please call the city.** Sometimes a sewer cleaning will release a tree root or other item that may cause a back-up down the line. If you let the city know, we can take steps to prevent blockages for others.

Know the lingo

- **The service line is** the sewer line from an individual property to the street, where it meets the mainline.
- **The mainline is** the main sewer line in the street where service lines meet.
- **Investigate as soon as you can** if you notice floor drains backing up or slow drains. If the problem is not in your private line, it may be in the city line. **Please call the city first if you notice a problem.** Fast attention to these problems may prevent or lessen the severity of a back-up. It’s more likely the city can help the sooner we hear about the problem — don’t hesitate to call!

For questions or concerns about sewer backups, call Minnetonka Public Works at (952) 988-8400. This is definitely a case where preparation on your part can save you time and expense later. ☺

DEVELOPMENT DETAILS

DEVELOPMENT DETAILS highlights development projects in the city. Watch for this feature quarterly in the *Memo*. If you have questions about any of these projects, contact Minnetonka City Hall at (952) 939-8200.

The city's community development department notes that they have seen an increase in all types of building permits this year, as well as a 20% increase in value of construction over the same period last year.

Minnetonka residents may notice several projects proposed, beginning or continuing in the upcoming months:

@169 Bren

Construction started in mid-April on the expansion of the **Hwy. 169 and Bren Road interchange** into the Opus 2 business park. The project is expected to be completed by November of 2011 and will allow for future development and expansion of the business park. If you frequently travel in this area, visit www.169bren.com for information on how to receive updates on road closures or traffic impacts related to this project, and for detour routes. You can also sign up to receive updates via Twitter by following [@169Bren](https://twitter.com/@169Bren).

Dunn Brothers Coffee, located in the Minnetonka Mills shopping district on Minnetonka Boulevard, closed at the beginning of April and moved to Hopkins. Creekside Coffee Inc., a sit-down restaurant serving coffee, ice cream and other items, will be coming soon to the space.

Noodles & Company, located in Ridgehaven Square North on Ridgedale Drive, was slated to open at the end of April.

UnitedHealth Group continues work on the second building of its headquarters campus, located in the Opus business park near the northwest corner of Hwys. 169 and 62 (Crosstown). This second building is 10 stories with 350,000 square feet, and includes a parking ramp for 1,250 vehicles. Along with the first headquarters building, which is 10 stories tall and 350,000 square feet, and a third existing building on the campus, UnitedHealth will have total office space of more than a million square feet within the city.

In mid-March, a hotel developer held a neighborhood meeting regarding a concept plan involving a **potential Hampton Inn on the former Stuart Anderson's Cattle Company site on I-394**. The proposed Hampton Inn would contain about 100 rooms and would serve the extended-stay business travel market. If approved by the city, construction would begin in spring 2012.

In mid-April, Westside Developers hosted a neighborhood meeting regarding their concept for **Minnetonka at One Sixty Nine**. This project, a four- to five-story mixed use retail/office and residential building, is proposed to be located at the southwest corner of Minnetonka Boulevard and Highway 169. If approved by the city council, construction would begin this fall with completion in late summer 2012.

Construction continues on **St. Therese** in Glen Lake (*pictured below*). This latest addition to the Glen Lake neighborhood will provide 150 independent, assisted living and memory care units along with associated common use facilities and underground parking. Approximately half of the units have been rented. This facility opens in November 2011. ☺



Get your game on with rec services

HOPKINS-MINNETONKA RECREATION Services offers a wide variety of activities and programs this summer, for adults and children both. Here are just a couple to consider!

Adult yard games league

Grab a friend and sign up for this new league! Teams of two will compete in a different yard game each week in a round robin format for four weeks of league play followed by a two-week playoff tournament with seedings. Games will include: bags, bocce ball, ladder golf and polesh. Weekly games will be played Thursday nights, June 16 – July 20, at 6:30 p.m., with teams playing three games/opponents per night. Registration begins May 2 and closes May 30. Fee is \$40 per team. Call Recreation Services at (952) 939-8203 to register. Please refer to course #21335 when registering.

T-ball and instructional baseball

Register today for t-ball (5 & 6 year olds) or instructional baseball (7 & 8 year olds). This program is designed for the young ball player, with an emphasis on fun and learning new skills. A soft rag ball is used and all participants receive a team t-shirt. Several different locations and times are available. Please see the Recreation Services Activities Brochure at www.eminnetonka.com for specific locations and times. The season runs from June 6 – July 13 with an end-of-the-season evening World Series on July 14. Program cost is \$48. For more information or to register, call (952) 939-8203. ☺



Native Plant Market and Eco Fun Fest returns June 9

JOIN US FOR THE SECOND YEAR OF THE Native Plant Market and Eco Fun Fest June 9, 3–7 p.m., at the Minnetonka Civic Center Campus, 14600 Minnetonka Blvd., Minnetonka. The event will take place in the city hall parking lot, rain or shine.

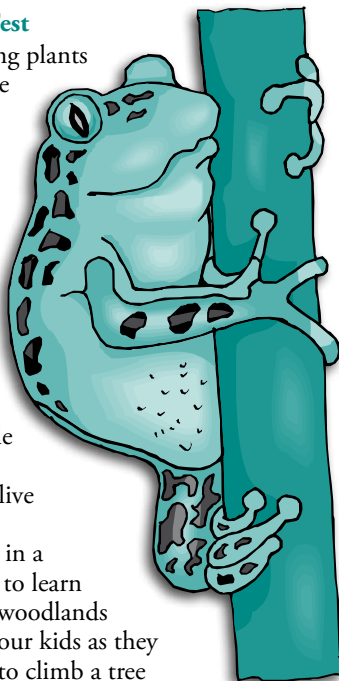
Native plant market

Many residents have asked for an opportunity to buy native plants, and now's your chance! Prairie Restorations, Dragonfly Gardens, Natural Shore Technologies, Minnesota Native Landscapes and Outback Nursery will be at the native plant market to sell a variety of native plants ranging from woody plants to grasses and wildflowers. Visit www.eminnetonka.com for a complete list of plants by vendor.

This is a cash/check-and-carry event so bring a box to make it easier to carry your plants home. Remember, native plants may be a bit more expensive than common horticultural varieties, but the benefit to the natural environment is worth every penny.

Eco Fun Fest

After buying plants spend some time with your family at the Eco Fun Fest. See an owl and learn about its habitat, visit the Zoo Mobile and get up close with live animals, participate in a plant walk to learn about our woodlands or watch your kids as they learn how to climb a tree



with a rope and saddle. (Guardians will need to sign a liability waiver for their child to participate in the tree climbing.) Join the herpetology society and experience different reptiles or view tree planting and care demonstrations.

Master gardeners, tree care advisors, the Audubon Society and watershed district representatives will be available to answer all your plant, tree, bird and surface water questions. Hot dogs and chips will be available for purchase.

What to bring:

- Cash or checks for plant purchases.
- A box to carry away your new landscape treasures.
- Your own water bottle. Hot dogs and pop will be available for purchase.
- Rain gear if rain is predicted. This is a rain-or-shine event, although it may be cancelled if there is severe weather. ☁

Native Plant Market & Eco Fun Fest Schedule of Events

Native Plant Market

Multiple vendors

3–7 p.m.

Visit www.eminnetonka.com for a complete list of native plants by vendor

Raptor Booth

Three Rivers Park District

4–6 p.m.

Zoo Mobile

Minnesota Zoo

4–6 p.m.

See native and exotic animals.

Reptiles and Amphibians

Minnesota Herpetological Society

4–6 p.m.

See and learn about live reptiles and amphibians.

Tree Planting Demonstration

3–7 p.m. (ongoing)

Learn more about tree planting and care.

Tree Climbing Demo

Minnesota Society of Arboriculture

30-minute demo: 3 p.m.

Tree Climbing Activity*

Minnesota Society of Arboriculture

3:30–7 p.m.

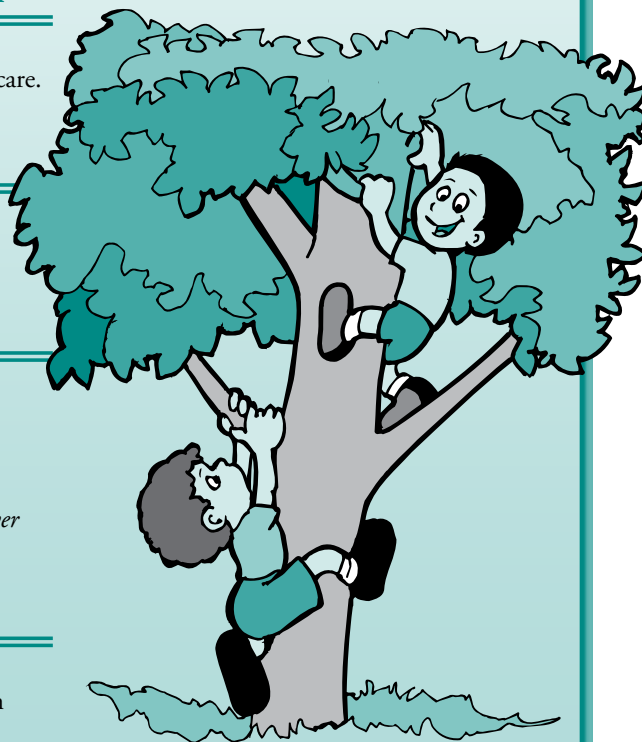
Kids can learn to climb a tree with a rope and saddle.

* Guardian signature on liability waiver required for participation.

Native Plant Walk

5–6 p.m.

Learn about plants and restoration in progress on the civic center campus.



Join these exciting May adult programs

DO YOU WANT TO PARTICIPATE IN engaging and lively activities that provide mental and/or physical exercise, and provide social interaction? Below is just a sample of the exciting activities offered each month for adults, all of which are advertised in a weekly email as well as a free monthly publication, the *Minnetonka Script*. Subscribe to one or both of these publications by visiting www.eminnetonka.com, or contact Nicole Gorman at ngorman@eminnetonka.com or (952) 939-8369.

Special Events

Cinco de Mayo Buffet

May 5, 12 p.m.

Enjoy a Mexican food buffet. Cost is \$5 due by May 2.

To Shred or Not to Shred

May 6, 10:30 a.m.

Learn more about keeping information confidential to prevent identity theft. Learn how long you should keep records, and what documents should be shredded. A shredding truck will be on-site May 17, 1–2 p.m. Cost is \$5, due May 4, for May 6 event and includes shredding on May 17. If you don't attend the May 6 event, you can bring paper for shredding May 17, but there will be a charge.

Garden Club

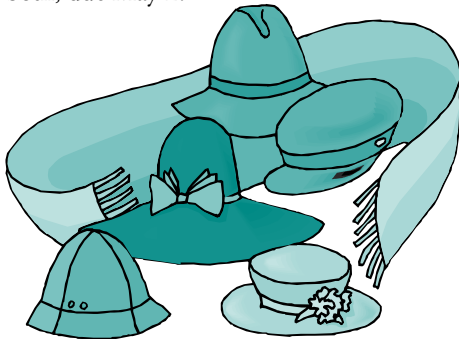
May 9, 1 p.m.

Join an informal walk around the Spring Peepers Meadow at the Minnesota Landscape Arboretum. The meadow is located at 3675 Arboretum Drive in Chaska, just south of Highway 5 and west of Highway 41. For more information call Sue Hocker at (952) 474-2285

Century of Hats/Over-85 Party

May 9, 11 a.m. (show); 12 p.m. (lunch)

Enjoy a vintage hat show before lunch. Cost is \$7 for show OR lunch; \$10 for both, due May 2.



Intro to Chair Pilates

May 10 & 12, 8:15 a.m.

Call (952) 939-8393 to register or for more information.

Show Tunes

May 11, 10:30 a.m.

Learn the definition and origin of musicals. Enjoy show tunes from Oklahoma, Annie Get Your Gun, Carousel, My Fair Lady and others. Cost is \$2, due May 9.

History of Modern China

May 18, 10:30 a.m.

Cost is \$2, due May 16.

Sleep Presentation

May 23, 10:30 a.m.

Presented by Colleen Bazzani. Cost is \$2 due by May 19.



CareNextion Demo

May 24, 6 p.m.

Learn about a free caregiver web-based tool specifically designed for the Minnetonka Community. Call (952) 939-8393 to register for this free session.

Understanding Osteoporosis

May 25, 10:30 a.m.

Understand bone health, including how to maintain and build bone strength to help prevent osteoporosis. Cost is \$2, due May 23.

Defensive Driving Classes

Call the Minnesota Safety Center at 1-888-234-1294 to register. AAA members receive \$3 off class registration by providing member number and expiration date.

Four-Hour Courses

Daytime: May 3, 9 a.m. – 1 p.m.

Evening: May 19, 6–10 p.m.

Refreshments provided (no meal).

Cost: \$20.

Eight-Hour Course

May 24 & 26, 6–10 p.m.

Refreshments provided (no meal).

Cost: \$24. ☺

MAM hosts May spring concerts

THE MUSIC ASSOCIATION OF Minnetonka (MAM) provides enriching musical experiences for people of all ages and abilities. Visit www.musicassociation.org or call (952) 401-5954 for information.

Music for Spring Concerts

Minnetonka Symphony Chorus, Chamber Choir and Choral Reflections of Minnetonka

Friday, May 6, 7:30 p.m.

Zion Lutheran Church of Hopkins
241 Fifth Avenue N., Hopkins

Friday, May 20, 7:30 p.m.

Gethsemane Lutheran Church
715 Minnetonka Mills Rd., Hopkins

Welcome Spring Concerts

Minnetonka Symphony Orchestra

Sunday, May 8, 3:30 p.m.

Wayzata Community Church
125 East Wayzata Blvd., Wayzata

Sunday, May 15, 3:30 p.m.

Westwood Lutheran Church
9001 Cedar Lake Rd., St. Louis Park

18th Annual Varen: Voices of Spring Concert

Minnetonka Youth Chamber, Concert, Cappella and Choristers Choirs

Saturday, May 21, 7:30 p.m.

Zion Lutheran Church of Hopkins
241 Fifth Ave N., Hopkins

Minnetonka Civic Orchestra Concert

Monday, May 23, 7:30 p.m.

Arts Center on 7
18385 Hwy. 7, Minnetonka ☺



Learn more about nature with a spring or summer plant walk

TAKE A GUIDED PLANT WALK IN A Minnetonka park where native plant restoration is underway. New to the series this year: lunchtime walks and a summer prairie walk.

Learn about restoration practices the city is using and learn to identify a few invasive species, too. RSVP is required and limited to 15 for each walk. Call Minnetonka Public Works at (952) 988-8400 or register online at www.eminnetonka.com.

- Rain or shine: wear appropriate outdoor clothing and sturdy footwear
- Recommended: bring a water bottle and a camera.
- All walks are on Thursdays, **except** Wednesday, May 18.
- Two walks are scheduled over lunch, from 11:30 a.m. to 1 p.m. Please be on time so everyone can leave as a group. ☺

Join a spring bird walk May 14

CELEBRATE SPRING WITH A BIRD WALK Saturday, May 14, from 8:30–11 a.m. along the trails of Lone Lake Park. Anne Hanley and George Skinner, Minnetonka residents and members of the Minnesota River Valley Audubon Chapter, will lead you through the park and identify bird species encountered along the way. The walk is open to all skill and age levels.

Lone Lake Park is located at 5624 Shady Oak Road, between Excelsior Boulevard and Highway 62 (turn in just north of the cemetery). Meet at the parking lot north of the soccer field. Remember to bring your binoculars and field guide if you have them (some binoculars will be available), and dress appropriately for the weather.

Register online at www.eminnetonka.com or call (952) 988-8400. ☺



Photo courtesy Joanie Michaud, 2009 photo contest

Park	Date (Thursdays except May 18)	Time	Meeting Place
Kinsel	April 28	5:30–7:30 p.m.	Main parking lot at 14017 Kinsel Road. Bring boots for walking in the wet. Some boots will be provided.
Big Willow	May 5	11:30 a.m.–1 p.m.	Small parking lot on Minnetonka Blvd. Overflow parking is across the street to the east at Guillian Park.
Hilloway	May 12	5:30–7:30 p.m.	Meet at the south end of the park at the Sylvan Road dead end. Please park on the west side of Sylvan Road.
Lake Rose	May 18	11:30 a.m.–1 p.m.	Park entrance is a city strip of land between 5724 and 5732 Lake Rose Drive. Be considerate of neighbors: please park on the east side of the street and meet between the houses.
Purgatory	May 26	5:30–7:30 p.m.	Park address: 17315 Excelsior Blvd. Meet at the picnic shelter near main parking lot.
Civic Center	June 9	5–6 p.m.	Native Plant Market & Eco Fun Fest. See page 6.
Lone Lake	August 4	5:30–7:30 p.m.	Meet at the small Rowland Road parking lot.

Attend a garlic mustard workshop

APRIL AND EARLY MAY ARE THE BEST times to control the very invasive garlic mustard plant. It's important to learn different control methods for this plant, since it comes back easily when timing or methods are off-target. **Attend the May 4 workshop to get a head start** by removing the plant before it produces seed. Save yourself time and money by pulling the

plant early, reducing the need to bag or use herbicide. Handouts will be provided.

Workshops are Wednesday, May 4, or Thursday, June 2, at 6:30 p.m., at the Minnetonka Community Center, 14600 Minnetonka Boulevard, Minnetonka. Registration is required: register online at www.eminnetonka.com or call (952) 988-8400. ☺

Burwell House opens for tours June 11

LOOKING FOR A WAY TO GET IN TOUCH with Minnesota's past this summer? Then make plans to visit Minnetonka's own Charles H. Burwell House, listed on the National Register of Historic Places.

The Burwell House will open for regular tours Saturday, June 11, continuing through August 31: Tuesdays, 12–3 p.m.; Wednesdays, 6–8 p.m.; and Saturdays, 12–4 p.m.

Tours are free and no reservations are required—just stop by the house at 13209 E. McGinty Road, Minnetonka. Parking is

available on the grounds, the main floor of the house is handicap accessible, and the entire house is air-conditioned. The Burwell House is owned, operated and maintained by the city of Minnetonka.

Want to bring a group for a special tour? Arrange a time by calling Laura Ronbeck at (952) 939-8219 or email lronbeck@eminnetonka.com.

For more summer fun, don't miss the Burwell House Old-Fashioned Ice Cream Social on Saturday, June 25, from 10 a.m. to 3:30 p.m. Look for more details in the June *Minnetonka Memo*. ☺

Make your lawn care easier this summer

SPRING IS NOW UPON US, ALONG with its many yard care chores. Follow these tips to help make this season more productive and possibly even a little easier!

Mow smart

Keep your lawn mower blade sharp and replace it as needed. Dull or damaged blades make mowing harder and can leave torn ends on the grass blades, increasing water loss. Set your blade higher (2 ½ to 3 inches) to retain moisture, especially during summer months, and avoid removing more than ⅓ of the height of the grass blade to minimize plant stress.

Cover your soil

Now is a great time to seed bare spots, eroded areas or other exposed soil before summer. Rake any grass seed gently into the soil surface. Apply wood mulch as needed around trees and shrubs, keeping it back from the trunk or stem. Consider shade-tolerant groundcovers for areas with limited sunlight.

Water wisely

If needed, water in the early morning if possible, otherwise, in late afternoon. Avoid watering mid-day when evaporation is high. Remember to water your trees and shrubs deeply at the roots, not at the trunk. Consider using a rain barrel for watering plants around your yard.

Watershed district offers grant programs

IF YOU'RE MAKING PLANS FOR YOUR gardens or landscaping this spring, the Minnehaha Creek Watershed District (MCWD) wants to lend a helping hand with a program that offers grants for projects that protect water resources by stabilizing shorelines and streambanks or by using stormwater best management practices (BMPs).

Polluted stormwater runoff is the biggest water quality problem in Minnesota and the country. In a natural environment, most rainwater soaks into the ground or is captured by trees or other plants. In developed areas, rainwater runs off roads, parking lots and rooftops, carrying dirt, fertilizer, pesticides and other harmful materials into lakes, streams and wetlands. The MCWD's Cost Share programs help property owners make improvements that prevent this runoff from occurring.

Eligible projects for Stormwater BMP Cost Share Grants include raingardens, which filter stormwater; and pervious pavement, which allows rain to pass

Remove weeds

Pull unwanted plants from your lawn and garden beds before they produce seed and spread. Consider smothering some patches of weeds with a few sheets of newspaper and wood mulch or leaves for later replanting. If you use herbicides, consider spot treatments instead of broadcast applications, watch for overspray, and be certain to clean up spills on paved surfaces.

Plant for the future

Select plants appropriate to growing conditions of your yard (moisture, soils, sunlight, etc.) and consider how they will fit with the existing trees, shrubs and other plants as they mature. Choose native wildflowers, grasses and shrubs with different bloom periods for a landscape bed to attract birds and butterflies as well as provide changing color through the season.

Keep storm drains clear

Blow or sweep grass clippings out of the street and rake sticks, leaves and debris from street drains and culverts to protect water quality and minimize flooding problems. Dispose of materials with your yard waste (or garbage for debris) or compost for use in your yard. Remember that materials that wash into storm drains eventually flow into neighborhood creeks, lakes, and wetlands. ♪

through the material to a drainage system below.

Eligible projects for Shoreline and Streambank Stabilization Cost Share grants include native plant borders, which offer many benefits along streambanks and shorelines. Their roots filter and absorb polluted runoff, they prevent erosion by anchoring the soil and they beautify the shoreline. Their natural height and density also discourage geese, which are attracted to turf adjacent to water.

Grants are available for improvements to private property including residential, business and private schools. Shoreline and Streambank Cost Share grants are also available to public entities. For more information, contact MCWD Cost Share Specialist Aldis Kurmis at (952) 641-4523 or akurmis@minnehahacreek.org.

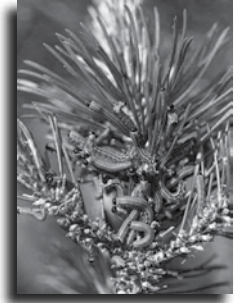


MINNEHAHA CREEK
WATERSHED DISTRICT

Know more about pine sawflies

IF YOU HAVE PINE trees in your yard, be aware of the European pine sawfly. This non-native insect's larvae feed on living (green) pine needles from the previous year's growth. The older needles will not grow back, but new needles will grow each year at the branch tips. Although tree loss from sawflies is uncommon, continued feeding can slow tree growth and cause the tree to appear thin if the number of feeding larvae is high.

To learn more about sawflies, visit www.extension.umn.edu and search for "sawfly." ♪



Permit needed for recreational fires

IF YOU'D LIKE TO HAVE A RECREATIONAL fire (campfire), the Minnetonka Fire Department's "What If?" program reminds you that a permit is required. It's free, easy to acquire and is valid for as long as you live at your home. Visit www.eminnetonka.com and click on "Fire," then "Fire Prevention," then "Recreation Fires and Permits." You'll find all the information you need for a permit. Print your permit and have it available upon request. Be sure to follow the guidelines and conditions of the permit once you begin having fires. The burning of brush, trash and leaves is prohibited.

In addition, please be considerate of your neighbors if you have a recreational fire. Windy conditions can carry smoke or the smell of smoke into your neighbor's house. In addition to the fact that not everyone likes the smell of a campfire in their home, smoke may also be a concern for those who have chronic respiratory issues or other health problems.

For those of you who have enjoyed recreational fires over the years, consider revisiting the city website to stay up to date on all of the current conditions of use for a recreational permit. ♪



Planning to treat your ash trees this summer? Be informed!

IF YOU PLAN TO TREAT YOUR ASH TREES this summer to protect them from emerald ash borer (EAB), it's important first to ensure you are not contaminating Minnetonka's water resources.

EAB has not yet been found in Minnetonka, but experts agree that it will eventually spread throughout the metro area. The closest EAB-positive trees are in Minneapolis, roughly south of the Prospect Park neighborhood, about 13 miles from Minnetonka's eastern border. As a result, many Minnetonka residents have decided to start preventative insecticide (pesticide) treatments. Individual trees can be treated with specific insecticides in order to kill or keep EAB from establishing in the tree. The current recommendation is to avoid the treatments until the pest has been found within 15 miles of your yard.

It's up to you to determine whether pesticide treatments are the right choice for your trees, but it's important to be educated about your options. The city strongly advocates for the proper application and strict adherence to the pesticide's label instructions in order to limit adverse environmental impacts in our community.

Before you decide to treat, consider:

- Cost of removal and replacement of your ash tree vs. the financial cost of long-term pesticide treatments performed every year or two into perpetuity.
- Timeframe for a new tree to establish. Treatment may be used until the new tree establishes and reaches a certain height.
- Value of the ash tree, depending on its location and its effect on your property value, wildlife habitat, heating and cooling costs and shade to your yard.
- Health, condition, size and age of your tree. Does your tree have strong branch structure? Does it have wounds or visible decay (rotting wood)?
- Number of ash trees. You can opt to treat the best and leave the others untreated.
- Proximity of emerald ash borer-positive trees. Wait to treat until your yard is 15 miles from the closest EAB tree. At this time, only southwestern Minnetonka is farther than 15 miles.

Once you decide to treat, remember:

- Each type of pesticide works differently in terms of how the insect comes into contact with the active ingredient.

- Some pesticides are "do-it-yourself" and others must be professionally applied.
- Products are applied via trunk injection, soil injection, soil drench, bark spray or foliage spray.
- Most treatments must be applied once per year or once every two years. They must be repeated in order to remain effective.

If you decide to use homeowner products:

Follow the tips below from the Minnesota Department of Agriculture to protect our water quality.

- **Don't** use soil-applied products or sprays within 25 feet of bodies of water, including channels to surface or groundwater such as storm drains, street curbs, ditches, sumps or well heads, ponds, wetlands, streams and lakes.
- **Don't** use soil applications or sprays if heavy rainfall is predicted within 24 hours of a planned treatment.
- **Don't** apply a soil application to ground

that is saturated or frozen or to sloped surfaces where runoff is a risk.

- **Do** use only the recommended amount of insecticide for your tree's size and do not apply it more frequently than is advised so excess chemical is not leached into the groundwater system.
- **Do** minimize drift of insecticidal sprays by applying the chemical on calm days. These sprays present exposure risks to surface water, children, pets and nearby flowering plants and their pollinators.

Research about EAB management is always developing. Information about effectiveness, environmental impacts, costs and methods are changing frequently. To stay informed, visit the Minnesota Department of Agriculture's webpage on emerald ash borer at www.mda.state.mn.us/emeraldashborer.

To read about available insecticides or effectiveness studies, visit www.eminnetonka.com and search "chemical treatments for emerald ash borer" in the search bar. ☺

Avoid situations that could cause insecticides to wash away or leach, potentially contaminating water resources

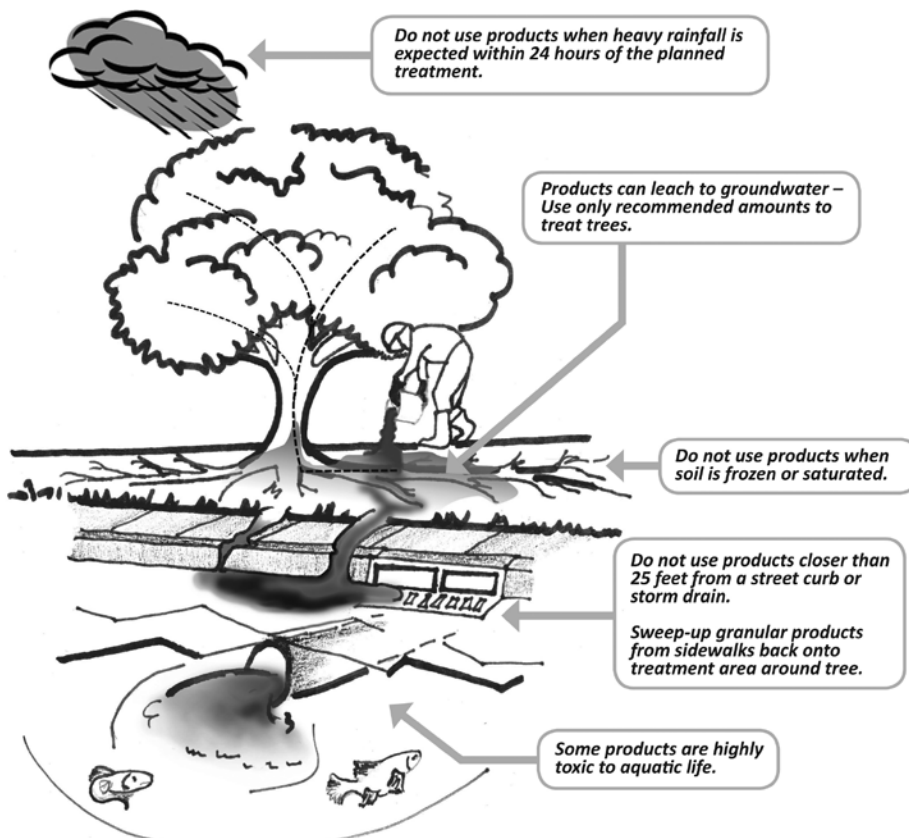


Illustration adapted from Dreistadt, S.H., J.K. Clark, M.L. Flint. 2004. Pests of Landscape Trees and Shrubs, An Integrated Pest Management Guide. Publ. 3359. Page 13.; and, Flint, M.L. 2009. Lawn and Residential Landscape Pest Control, A Guide for Maintenance Gardeners- Workbook. Publ. 3510. Page 44.

Illustration courtesy MN Dept. of Agriculture

More invasive species are headed our way; rapid response is key

WE NOW LIVE IN A WORLD OF GLOBAL MARKETS WITH CONSTANT movement of people and products. Most invasive species were imported to the U.S. for seemingly innocuous uses years ago (like buckthorn and garlic mustard); but now, species are regularly hitchhiking their way to new continents. Once they arrive, they hitchhike again from state to state with people, animals, wind and water. Invasive species are not going away and will always be a problem. The city has an aggressive education and control program for buckthorn and garlic mustard, but there are many other invasive plants in our parks and yards.

Our habitat restoration staff has identified old-timer and newcomer upland invasive species in our parks. With the help of volunteers and contractors, we have started to remove about two-thirds of these species in high-value restoration areas. Regrettably, due to time and staffing constraints, there are many areas from which invasive species can't be removed.

Some increasingly common invasive species include:

- Burdock *Arctium minus*
- Hoary alyssum *Berteroa incana*
- Spotted knapweed *Centaurea biebersteinii* (*C. maculosa*)
- Leafy spurge *Euphorbia esula*
- Dame's rocket *Hesperis matronalis*
- Motherwort *Leonurus cardiaca*
- Purple loosestrife *Lythrum salicaria*
- Japanese knotweed *Polygonum cuspidatum*
- White campion *Silene latifolia*
- Nightshades *Solanum dulcamara* & *S. nigrum*
- European cranberrybush *Viburnum opulus*
- Non-native thistles (*Canada, bull* & *nodding*)
- Wild four o'clocks *Mirabilis nyctaginea*

We are keeping an eye out for these newer invasive plants:

- Narrowleaf bittercress *Cardamine impatiens* (*new to MN*)
- Asian bittersweet *Celastrus orbiculatus*
- Japanese stiltgrass *Microstegium vinimeum*
- Wild parsnip *Pastinaca sativa*
- Cow vetch *Vicia cracca* & *V. villosa*

“Early detection and rapid response” is a motto to encourage quick removal of an invasive plant before it spreads. If you find these species on your property, be proactive and remove them before they spread.

Find photos of these and other species easily by going online and searching images, using the botanical name. These websites also have good invasive species information and photos:

- Midwest Invasive Plant Network at www.mipn.org
- Minnesota DNR at <http://www.dnr.state.mn.us/invasives/terrestrialplants/index.html>
- Wisconsin DNR at <http://dnr.wi.gov/invasives/>
- Wisconsin manual of control recommendations for ecologically invasive plants http://dnr.wi.gov/invasives/publications/manual/manual_list.htm#EXOTIC ☺



Above, Motherwort leaves. Below, Japanese knotweed grows 10' tall.



Make a difference!

- When removing weed seeds and burs from yourself or your pet, don't discard outdoors. Put them in the trash.
- Be on the lookout for invasive species. Keep updated on common local invasive species through the MN DNR invasive species website: <http://www.dnr.state.mn.us/invasives/index.html>. Note that some species are more invasive than others. For example, a few are still being used as ground covers in road construction projects, while others are prohibited noxious weeds.
- Respond aggressively to rid invasive species from your property.
- Learn more about invasive species by looking at the websites listed in the accompanying article.
- Plant native species whenever possible. See page 6 for information about the Minnetonka Native Plant Market and Eco Fun Fest Thursday, June 9. ☺

Canoe scenic Minnehaha Creek on weekends starting May 7

THE CITY OF MINNETONKA WILL AGAIN be offering a canoe rental and shuttle service for anyone interested in canoeing the beautiful Minnehaha Creek corridor this spring and early summer. The program begins on May 7 and will run through July 10, contingent upon adequate water levels in the creek. Services are provided on weekends during the entire season, and Friday evening trips beginning June 3.

The cost to rent a canoe and a return shuttle ride is \$40 for a trip from Headwaters Park to County Road 73. This

trip is approximately 4 miles in length and will take 1–2 hours to complete. In addition, a longer route to St. Louis Park (approximately 8 miles) is offered on Saturdays and Sundays for a \$60 fee. Feel free to stop at any of the city parks along the way to explore or eat lunch.

For more information, or to reserve a canoe in advance, please call Recreation Services at (952) 939-8203. For weekend information beginning May 7, please contact the canoe shuttle staff directly at (612) 360-8235. ☺



Hwy. 169 and Bren Road work started

IN MID-APRIL, construction began on expansion of the

@169 Bren

interchange at Highway 169 and Bren Road that leads into the Opus 2 business park. Construction through May will include storm sewer and roadway reconstruction on Bren Road West and construction of temporary ramps on Highway 169.

The construction activities at the interchange, expected to be complete by November 2011, will require short-term closures of the roadways and ramps, with bridge removal and replacement anticipated to start in June and be completed by October 1. Once construction starts, frequent traffic changes are anticipated as construction activities progress.

To receive updates on this project and to see detour maps for the area, visit www.169bren.com or follow the project on Twitter: [@169Bren](https://twitter.com/@169Bren). Questions may be directed to 169bren@eminnetonka.com or to (952) 908-7099. This project is being led by the city of Minnetonka, in partnership with the Minnesota Department of Transportation and the city of Edina.

The city has received several awards for its creation of a unique funding structure, using multiple public and private resources and based on traffic counts generated by new commercial development, to fund this \$17 million capital expansion of the interchange. The funding mechanism balances both the public and private benefit of better roads by requiring businesses to pay their own costs for public road transportation. ☺

Apply now for the police citizen's academy

THIS FALL, THE MINNETONKA POLICE Department will host its second Police Citizen's Academy, a free eight-week program designed to give Minnetonka residents an in-depth look at the workings of the police department.

The program will consist of classroom lectures and hands-on experiences, covering topics such as police recruiting and training, crime scene investigations, emergency response team, community service officers, computer forensics, drug task force, school resource officers, police canine, crime lab, crime prevention, crime analysis, traffic unit, use of force and dispatch. Participants also receive a tour of the police department.

The goal of the academy is to build relationships with the community by creating police ambassadors, to help residents understand law enforcement strategies and challenges, to enhance public safety and to reduce crime.

Potential participants must fill out an application and meet the following criteria to be eligible for the academy:

- Commit to attending the eight-week program, Tuesdays, Sept. 6–Nov. 2 (no class Oct. 11 due to the Minnetonka Fire Department and City Open House)
- Must be at least 21 years of age
- Must reside in Minnetonka
- Must allow a basic criminal background check

Applications are available at the Minnetonka Police Department, 14600 Minnetonka Boulevard, Minnetonka. To have an application sent to you, please contact Nicole Nelson at nnelson@eminnetonka.com or (952) 939-8546 and leave your name and mailing address. ☺

Handmade gifts at The Landing Shop

IF YOU NEED A UNIQUE GIFT, THE Landing Shop is for you! Browse and buy handmade toys, doll clothes and furniture, sweaters, quilts, towels, booties and more. The shop is open Wednesdays through Saturdays, 10 a.m. to 4 p.m. For more information call (763) 591-4868 or visit www.eminnetonka.com (search "the landing shop"). The Landing Shop is a recreational program offered by the city of Minnetonka for area seniors. ☺





2011 MINNETONKA RECYCLING UPDATE

Spring Leaf Drop-Off Program ends May 15

Public Works Facility

11522 Minnetonka Blvd., ¼ mi. west of Cty. Rd. 73
Enter on the west side of the building (near the Big Willow ball fields)

The Public Works facility at 11522 Minnetonka Blvd will be **the only** site accepting leaves and yard waste. During the busiest times there will be expanded drop-off days. In addition to the normal operating schedule, the site will be open Friday, May 6 and 13, from 12 to 6 p.m. and Sunday, May 1, 8 and 15, from 12 to 4 p.m. You must present proper identification to verify you are a Minnetonka resident (driver's license, state I.D., or Minnetonka utility bill).

If you have other means of handling your leaves such as collection by your garbage hauler or backyard composting, please use that option! All garbage haulers offer curbside collection of yard waste for a fee (either an annual, monthly, per cart or per bag fee). Check with your garbage hauler for details.

State law requires proper compostable bags for curbside collection of bagged yardwaste — **regular plastic bags are not allowed.** Some companies offer yardwaste carts, eliminating the need for using bags.

LEAVES — Truck and trailer loads of leaves will be accepted only at Minnetonka Public Works and only during brush drop-off hours on the following dates:

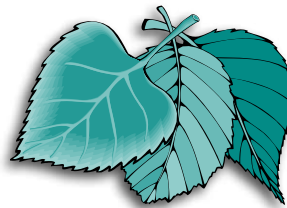
- **Mondays:** 12 to 8 p.m. May 2, 9
- **Tuesdays:** 12 to 8 p.m. May 3, 10
- **Fridays:** 12 to 6 p.m. May 6, 13
- **Saturdays:** 7 a.m. to 3 p.m. May 7, 14
- **Sundays:** 12 to 4 p.m. May 1, 8, 15

Spring leaf drop-off ends Sunday, May 15.

The city leaf drop-off site is bag-free. Residents will unload and/or unbag their leaves and yardwaste onto the large bulk pile and take all empty bags home for reuse or disposal — including paper and compostable bags. Please bring proper equipment, such as a stout pitch fork, to unload your truck or trailer load of leaves.

The suggested method is to use many layers of tarps between a foot or less of leaves. Use the tarp to gather up and move a small pile of leaves from your yard to your trailer or vehicle, continue using lots of small tarps until the vehicle is full. This makes unloading your leaves easier and faster at the site. All you need to do is flip off the tarps one at a time. Sticks and branches smaller than ½ inch in diameter are acceptable with leaves; anything larger goes to the brush pile. (See the brush drop-off article at top right.) **Loads of leaves must be covered during transport!**

Information about composting and yard waste management is available from Dean Elstad, at (952) 988-8430. ♻️



Brush drop-off now open

The brush drop-off program for Minnetonka residents is open Saturdays from 7 a.m. to 3 p.m. and Mondays and Tuesdays from noon to 8 p.m. Brush drop-off ends November 20, 2011.

The brush drop-off site will be closed on the following three holidays: Memorial Day, May 30; Independence Day, July 4; and Labor Day, September 5.

Branches up to 12" in diameter will be accepted. Proof of Minnetonka residency is required to drop-off brush (driver's license or utility bill).

Please note: trash, grass, loose leaves, dirt, sod, lumber, fencing, or wood scraps are not accepted. No brush will be accepted from commercial tree or lawn services.

Call (952) 988-8430 during business hours or leave a message anytime. ♻️

Next two holidays delay recycling collection

The Memorial Day holiday Monday, May 30, will delay recycling collection by one day. Residents west of I-494 will have recycling collection Tuesday, May 31, while residents east of I-494 will have collection Wednesday, June 1.

The Independence Day holiday Monday, July 4, will delay recycling collection by one day. Residents west of I-494 will have recycling collection Tuesday, July 5, while residents east of I-494 will have collection Wednesday, July 6. ♻️

Keep streets and storm drains free from debris

Minnetonka City Ordinances prohibit blowing and/or leaving grass clippings or other organic materials in the street. Please mention this to your lawn service.

845.010 Public Nuisances Affecting Peace, Safety and General Welfare.17.

Prohibits the intentional discharge of items such as leaves, grass clippings, solvents, antifreeze, oil, fireplace ashes, paint, and cement rinsings into a street, storm sewer system, or water resource such as a wetland, creek, pond or lake. ♻️

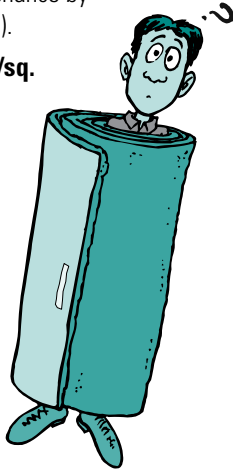


2011 MINNETONKA RECYCLING UPDATE

Special one-day drop-off

Minnetonka residents may drop off the materials listed below. The charge for dropping off each item, if any, is listed in parentheses.

- **Air conditioner or water softener (\$20)**
- **Appliances (\$12 each)**
Washer, dryer, dishwasher, stove, oven, cooktop, microwave, freezer, refrigerator, water heater, home furnace, trash compactor, garbage disposer, humidifier, dehumidifier.
- **Batteries (No charge)**
All car, truck, motorcycle, ATV, snowmobile and garden tractor batteries are accepted, as well as household batteries (D, C, AA, AAA, 6- and 9-volt cells, button batteries and rechargeable batteries).
- **Bicycles (No charge)**
Bicycles brought to the special drop-off will be given a second chance by Re-Cycle (612-209-6669).
- **Carpet & padding (\$1/sq. yd. for carpet and \$1/sq. yd. for padding)**
Determine the number of square yards of carpet or room size the carpet came from. Roll carpet or pad and tape or tie rolls. Rolls must not exceed six feet in length and/or up to 12 inches in diameter.
- **Copier or fax machine (\$35)**
- **Doors (\$2 and up, depending on size)**
- **Electronics (\$1 for each item, including TVs up to 32"; \$5 for TVs larger than 32")**
TV, stereo, computer, printer, monitor, radio, speakers, CD, VCR, DVD players, camcorder, cell phone, telephone, laptop.
- **Fluorescent lamps (No charge)**
Up to ten fluorescent bulbs will be accepted per vehicle. No lamps will be accepted from business or commercial use. Please transport lamps in a manner to avoid breakage. Don't tape bulbs!
- **Furniture: Chairs (\$5 – small, \$10 – large); loveseat (\$15); couch/sofa (\$20); hide-a-bed**



**Saturday, June 4,
8 a.m. – 3 p.m.**

Minnetonka Public Works
11522 Minnetonka Blvd.
East entrance by recycling center

(\$30); sectionals, dressers, chests, tables and other furniture (**\$5 and up depending on size**)

- **Lumber (\$2 minimum, based on \$25 per cubic yard)** No railroad ties, concrete or shingles.
- **Mattresses and box springs: (\$15 per piece for all sizes)** Mattresses are dismantled and acceptable materials recycled by the PPL Industries mattress recycling program.
- **Propane tanks: Small (\$1); Large — over a 2-lb. tank (\$5)**
- **Scrap metal — clean (no charge)**
Clean scrap metal means all plastic, rubber, wood, concrete and hazardous materials must be removed. Clean scrap metal includes pipe, gutters, swing sets, barbecues, ducting, fencing, etc.
- **Scrap metal — dirty (\$5)**
For example, lawn chairs with webbing, barbecues or lawn mower with wheels and/or non-metal parts still attached. All engines must be drained of oil and gas. Additional charges apply for riding mowers, garden tractors, snowblowers, or other large items.

- **Tires: Car, trailer or light truck (\$3 each); tires on rim (\$5); tractor or truck tire on split rim (\$20)**
- **Toilets and non-metal sinks (\$5 each)**
- **Windows (\$2 and up, depending on size)**

Payment will be accepted in cash or local checks payable to the city of Minnetonka.

NO GARBAGE OR HOUSEHOLD HAZARDOUS WASTE WILL BE ACCEPTED.

Please note: There will **not** be a charitable organization at the Special Drop-off accepting clothing and household goods.

Local charitable organizations that accept clothing and household goods include the following:

- **Bethesda Thrift Shop**
4749 Cty. Rd. 101, Minnetonka
(952) 939-0988
- **Goodwill Industries**
1025 Hill Street, Hopkins
(952) 935-2760
- **Value Village Thrift Store**
2751 Winnetka Ave, New Hope
(763) 544-0006
- **Vietnam Vets**
Pickup route information: (651) 778-8387

For more information, call Dean Elstad at (952) 988-8430 or visit www.eminnetonka.com. Fall special drop-off will be Saturday, September 17. ♻️

CITY OF
MINNETONKA

FARMERS' MARKET



Farmers' Market returns July 5

THE MINNETONKA FARMERS' MARKET returns for its third year, starting July 5 and continuing every Tuesday through September 27, from 3 to 7 p.m. at the Minnetonka Civic Center Campus, 14600 Minnetonka Boulevard,

Minnetonka. See the July *Minnetonka Memo* or visit www.eminnetonka.com for a complete list of vendors and activities. See you at the market! ♻️



2011 MINNETONKA RECYCLING UPDATE

Hennepin County Household Hazardous Waste (HHW) Community Collection

Thursday, May 19

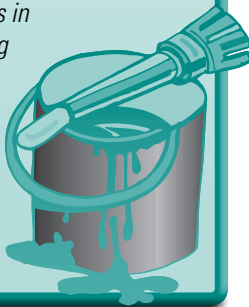
Friday, May 20

Saturday, May 21

9 a.m. – 4 p.m.

Minnetonka Public Works
11522 Minnetonka Blvd
East entrance by recycling center

Can't wait until May? Tired of waiting in lines? Saturday, May 21, is the busiest day, with longer waits in line. Consider bringing your household hazardous waste to one of the permanent facilities during the week (see article below).



The HHW drop-off is open to any Hennepin County resident and only accepts items from households. No hazardous waste or problem materials can be accepted from businesses, including home businesses or non-profit organizations.

The following HHW and problem materials are accepted free of charge:

Household, lawn and garden products:

Adhesives, aerosols, batteries, cleaners, drain cleaner, driveway sealer, fire extinguishers, flammable products, paint (limit three 5-gallon pails), paint thinners, solvents and strippers, pesticides, insecticides, herbicides, photographic and hobby chemicals, poisons, pool chemicals, rechargeable tools and electronics, stains, wood preservatives.

Mercury-containing items: Fluorescent and high-intensity discharge (HID) lamps and ballasts (maximum 25), thermometers, thermostats.

Electronics: Computers, laptops, DVD players, VCRs, radios, TVs, etc.

Auto and fuel wastes: Diesel fuel, fuel additives, gasoline (containers will not be returned), kerosene, starter fluid, vehicle lead-acid batteries, waxes. No motor oil or oil filters.

Gas Cylinders

- **Acceptable:** Propane tanks less than 40 lbs., specialty gases on a case-by-case basis if less than 59 lbs.
- **Unacceptable:** Propane tanks greater than 40 lbs.; gases requiring special management; all greater than 59 lbs., and all gas cylinders from a business.

There is no charge for dropping off HHW or the above listed items.

The following items are **not accepted** at the community HHW collection: appliances, asbestos, copiers, motor oil and motor oil filters, tires, some compressed gas cylinders (see above), explosives, radioactive materials, infectious waste or household garbage.

For more information, call Dean Elstad at (952) 988-8430 or Hennepin County at (612) 348-3777. ☺

Year-round HHW drop-off sites

Residents may bring household hazardous waste (HHW) to either of Hennepin County's permanent drop-off facilities:



1400 W. 96th St., Bloomington
8100 Jefferson Hwy., Brooklyn Park

There is no charge to drop off residential HHW.



Facilities are open Tuesdays, Thursdays and Fridays, 10 a.m. to 6 p.m.; Wednesdays, 10 a.m. to 8 p.m.; and Saturdays, 8 a.m. to 5 p.m. Facilities are closed Sundays, Mondays, Independence Day, Thanksgiving, Christmas and New Year's Day.

There is no charge to drop off residential HHW, but there is a limit to the annual quantities of materials dropped off or picked up. For more information visit www.hennepin.us or call Hennepin County at (612) 348-3777.

Household hazardous waste includes such items as

adhesives, aerosols cans, auto wastes (including gasoline, used oil and oil filters, antifreeze, brake fluid, transmission fluid, diesel fuel), batteries, cleaners, fire extinguishers, herbicides, fluorescent, CFL and HID lamps, paint, pesticides, photo and hobby chemicals, stain, solvents, thermometers, thermostats and switches containing mercury, thinners and rechargeable appliances and batteries.

Also accepted for no charge are consumer electronics (TVs, radios, stereos, VCRs, camcorders, telephones, computers, monitors and printers). No copiers or fax machines are accepted.

Household appliances (microwaves, water heater, stove, freezer, washer, dryer, etc.) may be dropped off for a \$15 fee.

Small loads of junk are accepted at the Brooklyn Park drop-off facility. Minimum charge per load is \$19. Mattresses and box springs are \$15 each. The fee and list of acceptable materials is determined by Hennepin County staff (cash, check, MasterCard or Visa accepted).

For more information call Hennepin County at (612) 348-3777 or visit the website at www.hennepin.us/dropoffs. ☺

minnetonka memo

May 2011



PRESORTED
STANDARD
U.S. POSTAGE
PAID
CITY OF MINNETONKA

A publication of the city of Minnetonka
14600 Minnetonka Boulevard, Minnetonka, MN 55345 • (952) 939-8200
8 a.m. to 4:30 p.m. Monday–Friday

Mayor

Terry Schneider.....(952) 939-8389
..... Home: (952) 934-9529
.....tschneider@eminnetonka.com
Meetings with the mayor may be
scheduled by calling (952) 939-8211.

City Manager

John Gunyou.....(952) 939-8200

Newsletter Editor

Jacque Larson.....(952) 939-8200

E-mail:.....comments@eminnetonka.com

Internet:.....www.eminnetonka.com

Council

At Large: Dick Allendorf... (952) 933-6231 dallendorf@eminnetonka.com
..... Amber Greves... (952) 931-3960 agreves@eminnetonka.com
Ward 1: Bob Ellingson... (952) 931-3065 bellingson@eminnetonka.com
Ward 2: Tony Wagner... (952) 512-1817 twagner@eminnetonka.com
Ward 3: Brad Wiersum... (612) 723-3907 bwiersum@eminnetonka.com
Ward 4: James Hiller... (952) 974-1003 jhiller@eminnetonka.com

Minnetonka Mike.....(952) 939-8586 mike@eminnetonka.com

POLICE-FIRE: Emergency..... 9-1-1

Non-emergency.....(952) 939-8500 or 9-1-1

ECRWSS
POSTAL PATRON

Calendar

City of
Minnetonka

May
2011

Call (952) 939-8200
for meeting
locations.

S	M	T	W	T	F	S	Call (952) 939-8200 for meeting locations.
1	2	3	4	5	6	7	2 City Council (<i>Board of Review</i>) 4 Park Board, 7 p.m.
8	9	10	11	12	13	14	5 Planning Commission, 6:30 p.m. 5 Silver Skates Ice Revue, 6:30 p.m.
15	16	17	18	19	20	21	6 Silver Skates Ice Revue, 6:30 p.m. 7 Silver Skates Ice Revue, 2:00 p.m.
22	23	24	25	26	27	28	10 Senior Advisory Board, 10 a.m. 15 Williston Center grand re-opening (<i>see page 3</i>)
29	30	31					16 City Council, 6:30 p.m. 19 Planning Commission, 6:30 p.m. 23 City Council study session, 6:30 p.m.; Community Commission, 6:30 p.m. 23 Economic Development Advisory Commission, 6:30 p.m. 30 Memorial Day, <i>city offices closed</i>

All meetings listed above are open to the public. Meeting dates and times are subject to change—please check www.eminnetonka.com for the latest information.

Minnetonka City Council and Planning Commission meetings are broadcast live on cable channel 16, and replays are available Mondays and Wednesdays at 6:30 p.m.; Fridays and Saturdays at noon, or anytime via videostream at www.eminnetonka.com. Agendas for council meetings are available on the city’s website by the Friday afternoon prior to the meeting, and planning commission agendas are available by the Monday prior to the meeting.

Staying informed about city projects

THE CITY REGULARLY RECEIVES applications for projects that require planning commission and/or city council approval. Information on these, as well as many other city projects, is regularly updated on the city’s website. If you’d like to stay informed, visit “MyMinnetonka” at www.eminnetonka.com—click on “MyMinnetonka” under “Top Picks.” Through MyMinnetonka, you can learn about new projects in the city; provide online feedback on projects during their approval process, and receive email updates on projects. Planning commission meeting agendas are posted the Monday prior to the meeting. Visit www.eminnetonka.com for information. ∞

Test drive your business idea for free

THINKING ABOUT STARTING A NEW business or expanding an existing one? Here’s a chance to test drive your idea with a business advisor—for free!

As part of its Open to Business Program, the city of Minnetonka is collaborating with the Metropolitan Consortium of Community Developers (MCCD) to provide expert one-on-one counseling to help determine business feasibility and understand the process of starting or expanding a business.

On the second Monday of each month, starting May 9, test drive your business idea during a 15-minute

consultation, available between 9 a.m. and 11 a.m. at the Minnetonka Community Center, 14600 Minnetonka Boulevard,

Minnetonka. There is no sign-up or pre-registration—just show up during the session date and time.

This resource is offered by the city of Minnetonka, in collaboration with the Metropolitan Consortium of Community Developers (MCCD), as part of Minnetonka’s Open to

Business program. For more information call Rob Smolund at MCCD at (612) 789-7337, ext. 11. ∞



The paper in this newsletter was manufactured with electricity in the form of renewable energy (wind, hydro, and biogas).

