

# minnetonka memo

A Newsletter from the City of Minnetonka  
February 2010

## State of the City: Defining a new normal

City of  
minnetonka

14600 Minnetonka Boulevard Minnetonka, MN 55345 952-939-8200 Fax 952-939-8244

February 2010

2009 was a challenging year for everyone. We have all faced exceptional economic uncertainty in both our professional and personal lives, and the city I serve has not been immune to those challenges. Fortunately, we are now well-positioned to move forward.

For years, Minnetonka has taken a long-term, thoughtful approach to providing and funding city services. We have always evaluated the level of funds needed for city services in light of the value that our residents and businesses expect to receive. When the current financial crunch arrived, this long-term perspective put us in a more favorable position than that of many other governments.

While the city might have weathered a year or two of the current downturn with minimal changes, City Manager John Gunyou recognized that the economic challenges would continue well into the future, and that the level of anticipated increases in expenses was unsustainable. He and his capable staff proposed to the city council a number of significant structural changes to the city's organization, which involved consolidating some departments and eliminating a number of positions.

In the first half of 2009, city staffing was permanently reduced by about six percent, an amount similar to the average reductions made by private industry throughout the country. The council supported this effort, which will go a long way toward making basic city services sustainable well into the future. We have preserved our ability to continue to provide the basic services you, our residents and businesses, have come to expect, and at a reasonable price.

With those difficult changes behind us, our next challenge is to work with residents to define the "new normal" and to understand what you define as basic services, and what value you place on non-basic services. For one resident, a highly maintained park is a luxury, while another resident may consider it an essential service, integral to Minnetonka's quality of life.

As the economy improves, we'll look closely at new ways of doing business in order to protect the savings we've generated in the past year. We'll also invest in technologies that both lower costs and improve services; seek out more opportunities for cooperating with neighboring cities and agencies; pursue public-private partnerships that enhance infrastructure while also attracting new businesses; and institute new program offerings for residents, with little or no expenditure of tax dollars.

The difficult decisions we made last year put the city of Minnetonka on sound financial footing for years to come, but we will continue to seek feedback from residents and businesses on how best to weigh a leaner budget against doing a good job providing basic city services and maintaining the quality of life that makes Minnetonka such a great place to live. We are optimistic about our future as the economy continues to recover, but will retain the realism that we have long embraced in order to deal with the new normal going forward.

All the best in the new year,

Terry Schneider  
Mayor of Minnetonka

Minnetonka... where quality is our nature



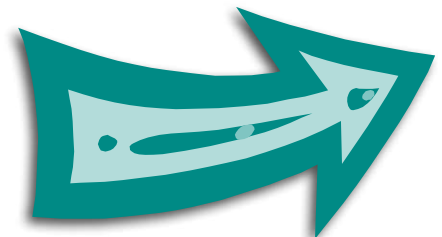
Mayor Terry Schneider

### State of the City event is Feb. 10

**Y**OU'RE INVITED TO THE 2010 State of the City Address by Mayor Terry Schneider Wednesday, Feb. 10, from 7:30–9 a.m. at the Minnetonka Community Center, 14600 Minnetonka Blvd., Minnetonka. A continental breakfast will be served. Please RSVP to Karen Telega at [ktelega@eminnetonka.com](mailto:ktelega@eminnetonka.com) or (952) 939-8211. ☺

### Kids' Fest is Feb. 14

**D**ON'T MISS OUT ON THE FREE FUN AT Kids' Fest Sunday, February 14, 1–5 p.m.! For more details turn to page 3. ☺



# WEST METRO HOME REMODELING FAIR



## Visit the Home Remodeling Fair February 28

**M**INNETONKA RESIDENTS ARE INVITED to the 18th annual West Metro Home Remodeling Fair Sunday, February 28, from 10:30 a.m. to 3:30 p.m. at the Eisenhower Community Center, 1001 Highway 7, Hopkins.

Sponsored by the cities of Minnetonka, Golden Valley, Hopkins and St. Louis Park, as well as Hopkins, St. Louis Park and Minnetonka Community Education, the Home Remodeling Fair is designed to promote improvements to these communities' housing stock.

Fairgoers can visit more than 75 displays by remodeling contractors, architects, electricians, landscapers, tool rental services, roofers, siding and window contractors, and lenders. Minnetonka planning department staff and city inspectors will also be at the fair.

Architects and landscape designers will staff the "Ask the Pro" booth and provide free, no-obligation advice to visitors. Fairgoers are encouraged to bring their photos or sketches.

Seminars topics include: kitchen and bathroom remodeling trends; decks and porches; window replacement and retrofitting options; landscaping; "green" remodeling products and others. Do-it-yourselfers can attend seminars on kitchen design, ceramic tiling and more.

Advance registration is not required and admission is free. Food concessions will be available at the Wetlands Café.

Fairgoers may park at Eisenhower Community Center or take the free shuttle bus from the Oak Ridge Country Club parking lot, 700 Oak Ridge Road.

Directions to Oak Ridge Country Club: From Eisenhower Community Center/ Hwy 7, go east on Hwy. 7 to Oak Ridge Road/5th Avenue, then turn left on Oak Ridge Road. The parking lot is one block north of Hwy. 7 on the west side of Oak Ridge Road. Look for signs.

For more information, visit [www.eminnetonka.com](http://www.eminnetonka.com) or [www.bomeremodelingfair.com](http://www.bomeremodelingfair.com), or call (952) 939-8200. ∞

## Precinct caucuses set for February 2

**P**RECINCT CAUCUSES ARE MEETINGS organized by Minnesota's political parties to begin the process of selecting candidates for the 2010 election. Caucuses provide a forum for people to discuss a wide range of public policy and political issues with their neighbors.

To find the date, time, and location of your precinct caucus visit Hennepin County's Web site at [www.co.hennepin.mn.us](http://www.co.hennepin.mn.us), or contact the political party.

### Constitution Party

**Phone:** (763) 227-4359

**Web site:** [www.cpmn.org](http://www.cpmn.org)

**Caucuses:** To be determined

### Democratic-Farmer-Labor Party

**Phone:** (651) 293-1200

**Web site:** [www.dfl.org](http://www.dfl.org)

**Caucuses:** February 2, 7 p.m.

### Green Party

**Phone:** (651) 288-2820

**Web site:** [www.mngreens.org](http://www.mngreens.org)

**Caucuses:** To be determined

### Independence Party

**Phone:** (651) 487-9700

**Web site:** [www.mnip.org](http://www.mnip.org)

**Caucuses:** February 2, 7 p.m.

### Republican Party

**Phone:** (651) 222-0022

**Web site:** [www.mngop.com](http://www.mngop.com)

**Caucuses:** February 2, 7 p.m. ∞

## 2010 Gray's Bay Marina lottery drawing: Don't let this opportunity slip away!

**I**N FEBRUARY, THE CITY OF MINNETONKA WILL HOLD A lottery drawing for 2010 Gray's Bay Marina boat slip vacancies and for the waiting list. Only Minnetonka residents are eligible for these slips.

Slips are approximately 10-½ feet in width and can accommodate boats up to a maximum of 26 feet length overall (LOA). Cost per slip for the 2010 boating season is \$3,800.

Applications must be received at Minnetonka City Hall no later than 4 p.m. Tuesday, February 16. The lottery will take place at the Minnetonka Community Center February 17, at 3 p.m. To receive a lottery application form call (952) 939-8390, e-mail [muweseloh@eminnetonka.com](mailto:muweseloh@eminnetonka.com), or visit [www.eminnetonka.com](http://www.eminnetonka.com) and click on Recreation, then Facilities, then Gray's Bay Marina. ∞

*At right: Boat slips at Gray's Bay Marina. Apply today!*



# Visit Minnetonka Kids' Fest Sunday, February 14

**H**OPKINS-MINNETONKA RECREATION SERVICES HOSTS KIDS' FEST Sunday, February 14, from 1 to 5 p.m. at the Minnetonka Civic Center Campus, 14600 Minnetonka Boulevard, Minnetonka.

All activities are free and include dog sled rides, dance instruction, face painting, ice carving demonstrations, mask making, swimming, ice skating and more! For a complete list of activities, see the schedule to the left.

Please bring canned goods to help area families in need. Collections will be received at the Minnetonka Community Center.

For ease of parking, a free van shuttle will run every 15 minutes among the three facilities at which activities take place: the Minnetonka Community Center, the Ice Arena, and Williston Fitness Center, located at 14509 Williston Drive, Minnetonka. Visitors may park at any of these facilities for the afternoon.

For more information visit [www.eminnetonka.com](http://www.eminnetonka.com) or call (952) 939-8203 ☺



## Winter hike for families

**O**N SATURDAY, FEBRUARY 27, FROM 5:30–7:30 P.M., FAMILIES and children are invited to enjoy a beautiful and easy ¾-mile winter walk on a trail/boardwalk through a wetland and wooded area from the Minnetonka Community Center to Jidana Park and back, under the full moon. Soak in the sunset and enjoy an evening campfire, complete with roasting hot dogs and making s'mores and hot chocolate. This is a very scenic part of Minnetonka in the winter. Meet at the Minnetonka Community Center, 14600 Minnetonka Blvd., at 5:30 p.m., dressed for a winter walk. Cost is \$5 and includes food. Call Minnetonka Recreation Services at (952) 939-8203 to register, and reference course #18334. ☺



## Kids' Fest Schedule of Events

*All events are at the Minnetonka Community Center unless otherwise indicated. Activities and performances are subject to change without notice.*

- 1– 2:30 p.m. Dog sled rides (first come, first served)
- 1– 2 p.m. Amazing Nathan (strolling magician)  
Batting cage (grades 4 and up) —  
*Williston Fitness Center*
- 1– 4 p.m. Shady Oak Beach season pass sales  
Early childhood sensory activities (Hopkins ECFE)  
Remarkable Reptiles display  
Antique telephone display  
Marvelous mask making (Minnetonka Center for the Arts)
- 1– 4:30 p.m. Concession sales; bonfire and s'mores
- 1– 5 p.m. Facepainting  
Ice carving demonstrations  
Dance instruction: hip-hop, creative moves  
Wheat grass gardens/bread—*Great Harvest*
- 1:15– 2 p.m. Schiffelly Puppets Show
- 2 & 3 p.m. Snowshoe nature walk (limited snowshoes available; leaves from community center)
- 2– 4 p.m. Open swimming — *Williston Center*  
Strolling characters
- 2:15– 3 p.m. Amazing Nathan (magic show)
- 2:30– 4:30 p.m. Ice skating/skate rental — *Ice Arena*
- 3– 4 p.m. Amazing Nathan (strolling magician)
- 3:15– 4 p.m. Jack Pearson Show (storyteller and musician)
- 3:15– 4:45 p.m. Dog sled rides (first come, first served)
- 4:15– 5 p.m. Bingo — win great prizes!

## Tree pruning drop-off opens in March

**T**HE CITY FORESTER RECOMMENDS November through March as the ideal time to prune oaks, as they are least susceptible to oak wilt disease during these months. This is also a great time to prune other trees, since insects and diseases are not active.

To assist residents who conduct proper winter pruning, the drop-off site at the Minnetonka Public Works facility (11522 Minnetonka Blvd.) will be open Saturdays, March 6, 13, 20 and 27, from 7 a.m. to 3 p.m. The site will not be open weekdays in March. The regular brush drop-off program starts Monday, April 12.

Branches up to 12" in diameter will be accepted. Christmas trees (without stands or decorations) will also be accepted. Proof of Minnetonka residency—a driver's license or utility bill—is required to drop off brush.

**Please note:** trash, grass, leaves, dirt, sod, lumber, fencing, or wood scraps are **not** accepted.

No brush or trimmings will be accepted from commercial tree or lawn services. ♪

## Use caution on frozen lakes and ponds

**A**NY TIME YOU VENTURE ONTO A frozen body of water to ice skate, ice fish or walk, you are accepting the risk of falling through the ice. It's not safe to assume ice is safe because temperatures have been cold—thin or unstable ice is always a possibility. Ice can shift, and underwater springs can create unstable ice. Know the condition of your lake or pond, use caution and be safe. ♪



## City tree sale orders due by March 15

**T**HINK SPRING AND PLAN TO PLANT! The city of Minnetonka tree sale is back for a fourth year to help you celebrate spring and Arbor Day. This special program is offered only once a year, exclusively for Minnetonka residents. To encourage tree replanting and to improve the diversity of Minnetonka's community forest, the city is pleased to offer residents a selection of 12 tree species at value pricing.

Planting a diversity of tree species makes your yard and the city's community forest more resilient to disease and invasive species, which often thrive on specific tree species. For example, while Emerald ash borer has not yet been found in Minnetonka, if you have lots of ash trees this is a great opportunity to plant different types of trees in order to protect the tree cover on your property.

Visit [www.eminnetonka.com](http://www.eminnetonka.com) for a comprehensive look at the trees offered this year, including sun requirements, anticipated fall color, mature size and special features. A tree information packet with the same information is also available at Minnetonka City Hall and at Minnetonka Public Works. Forms may be mailed in or dropped off at Minnetonka Public Works between 7 a.m. and 3:30 p.m., Monday through Friday.

### Ordering trees

- Quantities are limited and based on availability. Order early to help ensure you receive your first choice.
- Please rank your second tree choices in the event your top choices are sold out at the time your order is received. If no second choice is noted, your order will be returned via mail.
- Orders must be postmarked by Monday, March 15, 2010. Late orders will be filled if trees remain but will be returned to sender if trees are sold out.
- You may order up to two trees per property.
- Along with the tree order form, please fill out your name and address on the postcard to ensure you receive a confirmation reminder two weeks prior to the tree pick-up. Enclose postcard in envelope with order form and check.
- If you represent a homeowner's association, please contact the city forester prior to placing your order.
- This offer is open to Minnetonka residents only.

- For questions contact Emily (Barbeau) Ball, city forester, at [eball@eminnetonka.com](mailto:eball@eminnetonka.com) or (952) 988-8400.

## Tree pick-up

Trees **must** be picked up on designated dates or you forfeit the tree and the money you paid for it. Leftover trees will be planted in a Minnetonka park.

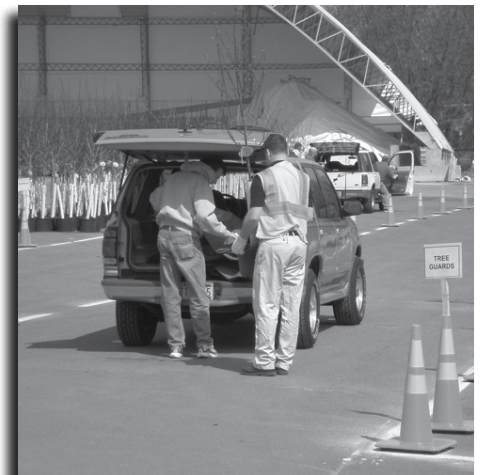
**Friday, April 30, 9 a.m. – 2 p.m.**  
**Saturday, May 1, 9 a.m. – 12 p.m.**

**East Driveway, Public Works**  
11522 Minnetonka Blvd.  
Minnetonka, MN 55305

**(952) 988-8400**

### Picking up trees

- Trees **must** be picked up on designated dates (listed above) or you forfeit the tree and the money you paid for it. Leftover trees will be planted in a Minnetonka park.
- You may ask someone (family member, friend, landscaper) to pick up trees on your behalf. Please be sure to give them your confirmation postcard to give to city staff.
- Some assistance will be provided with loading trees into vehicles, but please order a tree that you can realistically transport home.
- Written planting and care instructions will be provided for each order.
- Unlike a retail nursery, these trees do not have a warranty. ♪



# Tree Order Form

This offer available only to **Minnetonka residents**. You may order **two** trees per household.

**Name:** \_\_\_\_\_  
First Last

**Address:** \_\_\_\_\_  
House number Street Zip code

**Daytime phone number:** ( \_\_\_\_ ) \_\_\_\_\_ **Last name on check:** \_\_\_\_\_

**Check #** \_\_\_\_\_ **Amount enclosed:** \_\_\_\_\_

Rank alternative	Species	Stock type	Height *	Weight	Price	Quantity	Subtotal
* Second choice in case first selection is sold out			* At time of purchase				
<b>Large shade trees</b>							
	<b>Bur Oak</b>	Container	7–8 ft.	55 lbs.	<b>\$30</b>		
	<b>Ginkgo</b>	Container	7–8 ft.	55 lbs.	<b>\$30</b>		
	<b>Hackberry</b>	Container	6–8 ft.	55 lbs.	<b>\$30</b>		
	<b>Kentucky Coffeetree</b>	Container	5–6 ft.	55 lbs.	<b>\$30</b>		
	<b>Red Maple 'Northwood'</b>	Container	5–6 ft.	40 lbs.	<b>\$30</b>		
	<b>River Birch</b> (clump)	Container	5–6 ft.	40 lbs.	<b>\$30</b>		
	<b>Swamp White Oak</b>	Container	7–8 ft.	55 lbs.	<b>\$30</b>		
<b>Ornamental trees — suitable for planting under powerlines (as is Pagoda Dogwood)</b>							
	<b>Crabapple</b> (Royal Raindrops)	Container	5–6 ft.	40 lbs.	<b>\$30</b>		
	<b>Thornless Hawthorn</b>	Container	5–6 ft.	40 lbs.	<b>\$30</b>		
<b>Large shrub/small tree — suitable for habitat restoration</b>							
	<b>Pagoda Dogwood</b>	Container	3 ft.	40 lbs.	<b>\$30</b>		
<b>Conifers</b>							
	<b>Canadian Hemlock</b>	Container	4–5 ft.	40 lbs.	<b>\$30</b>		
	<b>White Pine</b>	Container	4–5 ft.	40 lbs.	<b>\$30</b>		
<b>Supplies</b>							
	<b>Plastic Tree Guard</b> (will protect trunk from deer, rodent and lawn mower damage—not suitable for conifers or clump species like River Birch, which can be caged.)		3–5 ft tall with a 2–3" diameter <b>Please note:</b> the small white guards that are on trees on the day of pickup are <b>only temporary</b> for shipping purposes and should be replaced with a taller, larger diameter tree guard.		<b>\$2</b>		
<b>Total:</b>							

**Please mail (or drop off) order form, check, and postcard by March 15, 2010 to:**

Minnetonka Public Works  
 Attn: City Forester  
 11522 Minnetonka Blvd.  
 Minnetonka, MN 55305

**Before you mail the order, please confirm:**

- Filled out order form completely?
- Enclosed check for exact amount?
- Filled out and enclosed postcard for city to mail your confirmation?
- Checked your calendar to make sure someone can pick up your trees on April 30 or May 1?

## Apply for the Police Citizen's Academy

**B**EGINNING IN APRIL, THE MINNETONKA Police Department will offer its first-ever Police Citizen's Academy, an eight-week program that will provide Minnetonka residents with an in-depth look at the workings of the police department.

The program will consist of classroom lectures and hands-on experiences, covering topics such as police recruiting and training, crime scene investigations, emergency response team, community service officers, computer forensics, the drug task force, school resource officers, police canines, crime lab, crime prevention, crime analysis, traffic unit, use of force and dispatch.

The academy is provided free to Minnetonka residents, with the goal of educating residents about the daily operations and special training police officers receive and use to perform their duties.

Potential participants must fill out an application and meet the following criteria to be eligible for the academy:

- Commit to attending the eight-week program, Tuesdays, April 6 to May 25, 6:30–9 p.m.
- Must be at least 21 years of age
- Must reside in Minnetonka
- Must allow a basic criminal background check

Applications are available at the Minnetonka Police Department, 14600 Minnetonka Boulevard, Minnetonka or on the city Web site at [www.eminnetonka.com](http://www.eminnetonka.com). To have an application mailed or emailed to you, contact Nicole Nelson at [nnelson@eminnetonka.com](mailto:nnelson@eminnetonka.com) or call (952) 939-8546 and leave your name and mailing address. ☺

## Attend a winter MAM concert

**T**HE MUSIC ASSOCIATION OF Minnetonka presents the following concerts in February and March. All concerts are free unless otherwise indicated. Donations are always gratefully accepted. For more information visit [www.musicassociation.org](http://www.musicassociation.org) or call (952) 401-5954.

### Young People's Concert

The **Minnetonka Symphony Orchestra** proudly presents its annual Young People's Concert featuring the winner of MAM's young artist competition winner, Olivia Sohlen. Enjoy an afternoon of classical music for the whole family!

*February 21, 3:30 p.m.*

*Normandale Hylands*

*United Methodist Church*

9920 Normandale Blvd., Bloomington

*February 28, 3:30 p.m.*

*Minnetonka United Methodist Church*

Hwy. 101 and Lake St. Ext., Minnetonka

### Winter Concert: "Soar!"

**Minnetonka Civic Orchestra**

*February 22, 7:30 p.m.*

*St. Barnabas Center for the Arts & Lutheran Church*

15600 Old Rockford Road, Plymouth

### Spring Gala Benefit

**The Minnetonka Youth**

**Choirs** present the annual Spring Gala Benefit featuring special guest performer, a cappella men's choir Cantus. For reserved tickets, call (952) 401-5954. Adults: \$20; Students: \$15.

*March 13, 7:30 p.m.*

*Arts Center on 7*

18285 Hwy. 7, Minnetonka

### Spring Concert

**Minnetonka Civic Orchestra**

**St. Paul Jewish Comm. Center Orchestra**

*March 14, 7 p.m.*

*Arts Center on 7*

18285 Hwy. 7, Minnetonka ☺



## INN VATION

### Leadership training for police department staff

**T**HE CITY OF MINNETONKA HAS A longstanding reputation for instituting innovative ideas in order to provide excellent customer service to residents while also using taxpayer dollars wisely. This month, the Minnetonka Police Department hosts its third leadership academy for police officers in partnership with the Plymouth and Maple Grove police departments.

Designed for both sworn officers and civilian employees of the three police departments, the six-week course provides customized leadership training for those who want either to become supervisors or to understand more about being a leader in their own organization.

Offered three times on an every-other-year basis since 2006, the Minnetonka, Maple Grove and Plymouth police department command staff collaborates to develop the customized curriculum based on feedback from graduates of the previous session, as well as on the unique needs of the three organizations.

A total of 24 police department staff—eight from each agency—attend the training, which is held for three hours on six consecutive Tuesday evenings and is attended on the participants' own time.

Topics range from ethics to branding to navigating politics and more. Guest speakers are invited to present, and one of

the most popular sessions is a chiefs' roundtable, with the three police chiefs answering questions about leadership from attendees. Each year participants also read and discuss a book—this year's selection is "Shackleton's Way: Leadership Lessons from the Great Antarctic Explorer." The program culminates with a graduation ceremony, complete with guest speaker.

"This training provides a better quality of police officer," explains Minnetonka Police Chief Mark Raquet. "Even though not all of those attending may become supervisors, at the end of the program they will be more well-rounded and have a better understanding of the effects of their interactions with the public."

"In addition, the chance to meet and talk with colleagues from neighboring cities creates networking opportunities and expands officers' horizons," Chief Raquet said.

This program is only one example of collaboration between the Minnetonka, Plymouth and Maple Grove police departments—for many years the three departments have partnered on Safe & Sober enforcements, a teen driver diversion program, and numerous grants for a variety of projects benefiting law enforcement and residents in the three cities. ☺

## Transit Link to replace Dial-a-Ride with more service

**I**N EARLY FEBRUARY, THE MINNETONKA Dial-a-Ride system becomes Transit Link and, during certain hours, will expand its ride offerings to anywhere within Hennepin County — not just Minnetonka.

Transit Link hours will be weekdays 6 a.m. to 9 p.m. and Saturdays 8 a.m. to 4 p.m. (no service Sundays). Rides during the last two hours of service on weekdays and on Saturdays will be limited to the Minnetonka area only. Fares will range from \$2.25 to \$6.75, each way, depending on the ride distance.

Rides may be scheduled up to five days in advance by calling (651) 602-LINK (5465). For more detailed information visit [www.eminnetonka.com](http://www.eminnetonka.com). ☺

## Enjoy tennis demo day February 20

**E**NJOY A FREE TENNIS DEMO AND clinic Saturday, February 20, from 3:30 to 5:30 p.m. at the Williston Fitness Center, 14509 Minnetonka Drive, Minnetonka. Try out the new 2010 racquets from Prince, Babolat and Head during the drill. Special discounts on all merchandise this day only. To reserve a spot, or for more information, call (952) 939-8370. ☺

## Upcoming events for Minnetonka seniors

**L**OCATED AT THE MINNETONKA Community Center, 14600 Minnetonka Blvd., Minnetonka, Senior Services offers a wide variety of classes, programs, and activities for active older adults. For more information, or to sign up for the free monthly newsletter, the *Senior Script*, visit [www.eminnetonka.com](http://www.eminnetonka.com).

### Defensive Driving Classes

#### Four-Hour Day Course:

*Feb. 23, 9 a.m. – 1 p.m.*

Refreshments provided (no lunch).

Cost: \$20. Call the Minnesota Safety Center at 1-888-234-1294 to register.

### Income Tax Help

If you have simple and basic income tax returns to prepare, call (952) 939-8393 for an appointment to have your income tax returns completed.

### Winter Hike at Minnehaha Creek

*Feb. 10, 10:30 a.m. – 12:30 p.m.*

Celebrate winter by joining Minnetonka Senior Services on a two-mile walk along Minnehaha Creek. Stop for a campfire at Jidana Park and roast hot dogs. Cost is \$4, due by Feb. 8.

### Community Dance

*Feb. 12, 6:15 – 10 p.m.*

Move your feet at the annual community ballroom dance. Entertainment by Paul Heffron. Cost is \$13 per person, and registration is required. Call (952) 401-6800 or visit [www.minnetonkacommunityed.org](http://www.minnetonkacommunityed.org).

### JFK Assassination: Mystery and Legend

*Feb. 16, 10:30 a.m.*

Presentation by David Jones. Refreshments provided. Cost is \$2, due by Feb. 12.

### Zoey's Story

*Feb. 24, 10:30 a.m.*

Be inspired by author Larry Litman, whose book is a collection of actual events in his dog Zoey's life, as told by her. Cost is \$2, due by Feb. 22.

### Winter Hike under the Full Moon

*Feb. 26, 5:30 – 8 p.m.*

Take a winter hike under the full moon, from Minnetonka Community Center to Jidana Park and back. Cook hot dogs over a campfire and enjoy hot coffee, dessert, pleasant conversation and the beautiful sky. Cost is \$4, due by Feb. 24. Note: This is a different event than the Feb. 27 winter hike for families, advertised elsewhere in this edition of the Minnetonka Memo.



### Chronic Conditions Workshop

*Tuesdays, March 16 – April 20, 1 – 3 p.m.*

Caregivers or individuals with chronic conditions are invited to meet weekly for six weeks to learn how to live well with chronic conditions. Set your own goals and create a step-by-step plan to improve your health. Cost is \$10 due by March 12. Call (952) 939-8393 for details. ☺

## Caring Youth Award nominations due Feb. 5

**I**F YOU KNOW A YOUNG PERSON IN GRADES 7 THROUGH 12 who shows an ongoing awareness of others through volunteering or other activities, consider nominating him or her for a 2010 Caring Youth Award.

Each year the cities of Minnetonka, Hopkins and Golden Valley, the Hopkins and Minnetonka school districts and the Glen Lake Optimists host a Caring Youth Recognition event to honor the contributions of caring young people. This year's event is set for Thursday, March 11, 2010, at 7 p.m. at the Minnetonka Community Center, 14600 Minnetonka Blvd., Minnetonka.

To qualify for the award, a Caring Youth must meet at least one of the following criteria: live in Minnetonka, Hopkins or Golden Valley; attend school in Hopkins or Minnetonka; and/or volunteer (unpaid and not as a requirement for a class or co-curricular program) in Minnetonka, Hopkins, or Golden Valley.

Young people may only be nominated by the organization they are serving. Nominations are due by Friday, Feb. 5, 2010. For more information, visit [www.eminnetonka.com](http://www.eminnetonka.com) or call Jacque Larson, community relations manager, at (952) 939-8207. ☺



