

minnetonka memo

A Newsletter from the City of Minnetonka
December 2009

Victorian Holiday Open House is Dec. 6

THE MINNETONKA HISTORICAL SOCIETY will host its annual Victorian Holiday Open House at the historic Charles H. Burwell House Sunday, December 6, from 1 to 4 p.m. Take a self-guided tour of the Victorian-decorated house and enjoy tea, cider and holiday refreshments.

Limited parking is available on the Burwell site, 13209 E. McGinty Rd, with additional parking across McGinty Road at St. David's Family Center. For more information call Florence Bogle at (952) 938-3758. ☺

At right: 2009 Photo Contest entry: "Burwell Tower," Kelsey Goeman



Sign up for the 2010 Citizen Academy

WHAT'S THE ROLE OF THE CITY council? What are the city's subdivision and zoning regulations? What recreational opportunities does the city offer? These are just a few of the questions you'll be able to answer after attending the 2010 Minnetonka Citizen Academy.

This free program takes place over six Tuesday sessions, 7–9 p.m., February 9, 16, 23, and March 2, 9 and 16 — at Minnetonka City Hall. Throughout the sessions, you'll hear from the various city departments including police, fire, administration, community development, engineering, public works, recreation, legal and finance. Also enjoy a short presentation on Minnetonka history by Betty Johnson, official city historian and long-time Minnetonka resident!

Graduates of the program — those who attend four or more sessions — receive special city council recognition. To enroll, email Jacque Larson, community relations manager, at jl Larson@eminnetonka.com or call (952) 939-8207. Please provide your name, address, phone number and email address. Registration deadline is January 15, 2010. ☺

Boards and commissions openings available

IF YOU'RE LOOKING FOR A WAY TO become more involved in the city of Minnetonka, consider applying to serve on a board or commission. In January 2010, openings will be available on the community commission, park board and the police advisory committee. In addition, openings are available for high school students on the community commission, park board and the police advisory committee.

Applications are due Friday, December 18, with interviews taking place in January 2010. Accepted applications are kept on file for one year to fill any unexpected vacancies, with interviews taking place as necessary. For an application, visit www.eminnetonka.com. For more information contact Karen Telega at ktelega@eminnetonka.com or (952) 939-8211. ☺

Caring Youth Award nominations due Feb. 5

IF YOU KNOW A YOUNG PERSON IN grades 7 through 12 who shows an ongoing awareness of others through volunteering or other activities, consider nominating him or her for a 2010 Caring Youth Award.

Each year the cities of Minnetonka, Hopkins and Golden Valley, the Hopkins and Minnetonka school districts, and the Glen Lake Optimists host a Caring Youth Recognition to honor the contributions of caring young people. This year's event is set for Thursday, March 11, 2010, at 7 p.m. at the Minnetonka Community Center, 14600 Minnetonka Boulevard, Minnetonka.

To qualify for the award, a Caring Youth must meet at least one of the following criteria:

- Live in Minnetonka, Hopkins or Golden Valley;
- Attend school in Hopkins or Minnetonka;
- Volunteer (unpaid and not as a requirement for a class or co-curricular program) in Minnetonka, Hopkins or Golden Valley.

Young people may only be nominated by the organization they are serving. Nominations are due by Friday, Feb. 5, 2010. For more information visit www.eminnetonka.com or contact Jacque Larson, Minnetonka community relations manager, at jl Larson@eminnetonka.com or (952) 939-8207. ☺

Public budget hearing is Dec. 7

MINNETONKA RESIDENTS AND property owners are invited to participate in the city's annual public budget hearing, set for Monday, Dec. 7, at 6:30 p.m. in the city council chambers, 14600 Minnetonka Blvd., Minnetonka. For more information about the proposed 2010 budget, please see page 3 of this edition of the *Minnetonka Memo*, or see the October and November *Memos*. Visit www.eminnetonka.com to provide feedback on the city's budget. All comments will be shared with the council as budget options are considered prior to the adoption of the final 2010 budget in late December. ☺



News for Neighbors

From the Minnetonka Police Department

NEW FOR NEIGHBORS APPEARS quarterly in the *Minnetonka Memo* with news for you about happenings in the Minnetonka Police Department. If you have questions about these items, call Nicole Nelson, crime prevention analyst, at (952) 939-8546.

- In May, members of the police department's traffic unit and other officers participated in the **MADD 5K Law Enforcement Challenge Fundraiser Walk**. For the second straight year, the Minnetonka Police team was awarded "Top Dogs of Law Enforcement" for raising the most money — more than \$2,000 — among all competing law enforcement teams. Money is used for education in schools, training for officers and advocates and help for victims of drunken driving crashes. This year's team included Officers Corey Schmidt, Shannon Odegaard, Heather Olson and Darlene Ford, Sergeant Gary Cayo and Community Service Officer DeeAnn Bloom.
- In August, **Officer Shannon Odegaard** was selected for the Minnesota Law

Enforcement Memorial Associations Honor Guard (LEMA). LEMA was established in 1991 to ensure that Minnesota officers who die in the line of duty "receive the ceremony, honor and dignity that such a sacrifice deserves at the time of their funeral." The honor guard is made up of approximately 40 police officer volunteers statewide. Officer

Odegaard is the first Minnetonka police officer to serve on the honor guard.

- In June, the police department was **awarded a \$1,000 mini-grant** from the Hopkins Community Coalition: One Voice for Reducing Youth Chemical Use, a community-wide effort aimed at decreasing



Officer Shannon Odegaard

- The police department was recently **awarded a \$15,000 grant** in support of Operation NightCap (Nighttime Concentrated Alcohol Patrol). The Minnesota Office of Traffic Safety, distributes these federally funded grants to law enforcement agencies based on statistical data indicating a strong commitment to DWI enforcement. ∞

the use of tobacco, alcohol and other drugs among youth in Hopkins Public Schools and member communities. The money will help fund the police department's annual liquor compliance checks.

- The police department was recently awarded a **grant from Target Corp.** to aid in promoting community safety. The Minnetonka Police Department will use the grant for safety presentations and events.

Know the laws for newly licensed teen drivers

TRAFFIC CRASHES ARE THE LEADING killer of Minnesota teens. New laws limiting teen passengers and nighttime driving are designed to help teens hone driving skills during the first year of licensure and reduce exposure to high-risk situations. Violating these laws is a misdemeanor. For more on teen driving, visit www.dps.state.mn.us/ots/teens.

Nighttime Driving Limitation (MN Statute 171.055)

For the first six months of licensure: Driving is prohibited midnight — 5 a.m. Exemptions: Driving when accompanied by a licensed driver age 25 or older; driving between home and place of employment; driving to/from home and a school event for which the school has not provided transportation; driving for employment purposes. The nighttime limitation is lifted after the first six months of licensure.

Teen Passenger Limitations (MN Statute 171.055)

For the first six months of licensure: Only one passenger under the age of 20 is permitted, unless accompanied by a parent or guardian. For the second six months of licensure: No more than three passengers under the age of 20 are permitted, unless accompanied by a parent or guardian. Exemption: Passengers under age 20 who are members of the immediate family are permitted. These provisions also apply to teens licensed before August 1, 2008. For example, a teen licensed on July 1 has five months and a subsequent six months of limitation requirements, rather than starting the limitation time periods anew on August 1.

Cell Phone and Texting Restrictions (MN Statute 169.475)

It is illegal for drivers under age 18 to use a cellular/wireless phone, whether hand-held

or hands-free— except to call 911 in an emergency. A new law has made it illegal for drivers of all ages to compose, read, or send text messages or access the Internet on a wireless device while on the road.

Drinking and Driving (MN Statute 169A.33)

It is illegal for a person under age 21 to drive after consuming any amount of alcohol. Consequences for underage drinking and driving are loss of license for at least 30 days and court fines. Teen drivers with provisional licenses whose driving privileges are revoked from a crash or alcohol/ controlled substance-related violation cannot regain a license until age 18.

To Qualify for a Full-Privileges License

License holder must have a safe driving record or be age 18. For details, visit www.mndriveinfo.org. ∞

City budget cuts limit 2010 property tax increase

In anticipation of expected losses in projected revenues due to state actions and the lingering economic recession, substantial cuts were made to the 2010 operating budget. Earlier this year, the city made \$2 million in permanent cost reductions by renegotiating labor contracts, laying off employees and eliminating vacant positions.

The 2010 budget will continue to prioritize direct services to Minnetonka residents, including police and fire services and street maintenance, while increasing property taxes by 1.99 percent — a reduction from the city’s preliminary levy set in September.

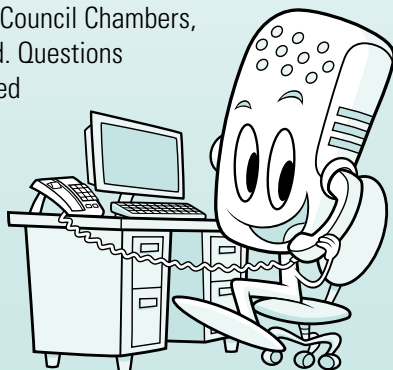
Additional ongoing cost-saving measures include cooperative service agreements with other agencies, productivity investments and department reorganizations. Consistent with its philosophy of managing for the long term, these measures have all focused on permanently restructuring operations rather than applying temporary patches.

HRA levy being considered

In addition to the city budget for operating costs and capital projects, the city council is also considering a recommendation from the Minnetonka Economic Development Authority (EDA) to adopt a Housing and Redevelopment Authority (HRA) levy increase for 2010. The potential 0.3 percent property tax increase would be used to support the goals of the city’s adopted 2030 comprehensive plan and to sustain the community’s housing stock by enhancing current home rehabilitation and homebuyer assistance programs.

Your input is welcome!

Additional information is available on the city’s Web site at www.eminnetonka.com so that interested residents can learn more about the city’s budget and property tax system and provide feedback. A formal **city budget hearing** will be held Monday, December 7 at 6:30 p.m. in the City Council Chambers, 14600 Minnetonka Blvd. Questions can always be addressed to Minnetonka Mike at mike@eminnetonka.com or (952) 939-8586 or to Finance Director Merrill King at mking@eminnetonka.com or (952) 939-8200.



An explanation of your tax bill

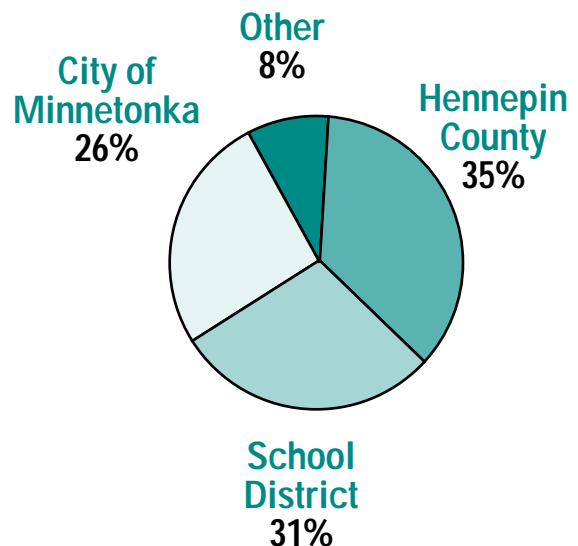
City property taxes will increase by \$18 (1.8 percent) on an average \$310,000 home in Minnetonka. Like school districts, a portion of your city property bill is voter approved. More than \$44 of the 2010 total city taxes on the average bill will pay the debt service for the park renewal and open space referendum bonds, approved by voters in 2001.

Proposed 2010 Property Taxes (average \$310,000 Minnetonka home)

	2009	2010
County	\$1,301	\$1,319
City	974	992
School <i>(based on Hopkins School District)</i>		
<i>Voter approved</i>	720	768
<i>Other</i>	344	374
School Total	1,064	1,142
Metro Districts	83	81
Other Districts	196	219
Solid Waste Fee	35	0
Total	\$3,653	\$3,753

2010 homeowner’s property taxes

The city of Minnetonka accounts for about one-fourth of a homeowner’s total property tax bill. The remainder is comprised of taxes for your school district (31 percent), county (35 percent), and other jurisdictions (8 percent).



INNOVATION

Thanking Minnetonka's natural resources volunteers

DURING THESE DIFFICULT ECONOMIC TIMES, THE CITY'S LONGSTANDING PRACTICE of instituting innovative ideas in order to use taxpayer dollars wisely, while still providing excellent service to residents, is more important than ever.

This month, we applauded the city's natural resource volunteers, who in 2009, volunteered hundreds of hours in many capacities to help monitor and improve native habitats in more than 15 Minnetonka parks, lakes and wetlands. Their generous donation of time and labor improves the quality of natural resources, stretches taxpayer dollars and allows for more expanded projects than might be possible with staff time alone.

Volunteer projects this year included:

- Removing invasive garlic mustard and buckthorn.
- Flagging native plants to protect in work areas and installing plant protection cages.
- Planting native trees and shrubs along a wetland buffer at Wing Lake.
- Planting native trees in Kinsel Park.
- Planting native trees in Glen Moor Park on Arbor Day.
- Improving deer exclosures.
- Monitoring wetland conditions through the Wetland Health Evaluation Program.
- Monitoring lakes through the Citizen Assisted Lake Monitoring Program.
- Adopting an area with high-value native plants.

In addition, natural resources staff extends a special thanks to the following volunteer groups individuals who made a large contribution in 2009.

- Hopkins High School American Legion baseball team (Lone Lake Park rain gardens)
- Wing Lake Neighborhood Association (Wing Lake shoreland)
- Master naturalists Cheryl Culbreth and Jim Coleman (Purgatory, Lone Lake parks)
- United HealthCare staff (Lone Lake Park rain gardens)
- Hopkins West Junior High students (Orchard Park)
- Boy Scouts Dan Flynn and Mark Juel (Eagle Scout projects at Purgatory and Victoria Evergreen parks)
- Randall Neal (Kinsel Park)

If you want to help, volunteers are needed year-round to assist with native habitat restoration on city land. For more information call (952) 988-8400. ☺



Volunteers lend a hand in Kinsel Park.

Finding a local firewood source

WITH THE DISCOVERY OF EMERALD ash borer in Saint Paul, you may have been told to buy firewood locally, since firewood, especially with intact bark, can harbor insect pests and fungal diseases. When transported to a new area, it can then introduce a new tree problem — like Emerald ash borer — to an area's forests.

A good rule of thumb is to buy or collect firewood within 100 miles of the place you plan to use it. If you are on a trip, be sure to buy only the amount you will need for your trip and burn it all.

According to new rules, firewood must be labeled if it has been transported over state lines or greater than 100 miles from its origin and offered for sale. If you buy firewood from a big box store, be sure that there is a label on it noting the origin.

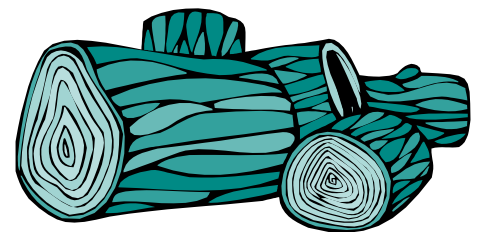
In order to protect forests, the Minnesota Department of Natural Resources (DNR) regulates the type of firewood that can enter a state park. As a result, the DNR has created an approval process for firewood dealers and publishes a list of those dealers on its Web site. For a list of all DNR-approved firewood dealers, visit <http://files.dnr.state.mn.us/forestry/firewood/firewoodVendors.pdf>.

You can also search by state park; a suggested search is to choose "Minnesota Valley State Recreation Area" since it's closest to Minnetonka. Many vendors are listed who sell wood originating within 100 miles of the park — and thus your home in Minnetonka. Visit www.dnr.state.mn.us/firewood_vendors/vendors/list.html.

In evaluating whether or not your firewood is appropriate, see state guidelines for firewood sales at www.mda.state.mn.us/plants/pestmanagement/firewood.aspx.

Questions? Contact city forester Emily Barbeau Ball at (952) 988-8421.

For more information on firewood, visit the Minnesota Department of Agriculture at www.mda.state.mn.us/plants/pestmanagement/firewood.aspx or the Minnesota DNR at www.dnr.state.mn.us/firewood/index.html. ☺




A quick reference guide to Minnetonka's evergreen varieties

WHILE EVERGREEN IS OFTEN USED AS a catch-all phrase for any tree that remains green throughout the winter months, not all evergreens are created equal.

For example, while “conifer” and “evergreen” are often used interchangeably, evergreen describes a plant that retains some of its needles or leaves year-round, while a conifer can be evergreen or deciduous (losing its needles or leaves), and produces its seeds and pollen in cones.

Most of the evergreens found in Minnetonka did not occur naturally — they are native to northern Minnesota, other parts of the United States, or even other countries. Read on to learn more about the various varieties of cone-bearing evergreens — conifers — in Minnetonka.

For more help with tree identification, visit www.mntca.org/resources/reso_tree.html or www.uwgb.edu/biodiversity/herbarium/trees/tree_key000.htm. 

Spruce

- Needles are short (up to 1 ½”), round, and individually attached to the branch.
- White and black spruce are the only native Minnesota spruce species.
- White spruce may be confused with Colorado spruce, which is not recommended for planting in Minnesota due to disease susceptibility.
- Colorado spruce have longer cones than white and black spruce.
- Norway spruce branches have a drooping silhouette when tree is mature.
- Black Hills spruce, a type of white spruce, is over-planted in Minnetonka.



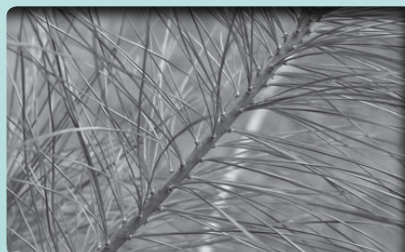
Cedars

- Two types of evergreen trees are native to Minnesota and referred to as cedar, but are not true cedar
- *Eastern red cedar*, or juniper, has scale-like and awl-shaped leaves and a berry-like cone
- Eastern red cedar is dark green during the growing season and reddish-brown in the winter, and grows well on hot, dry, sunny sites
- *Northern white cedar*, or arborvitae, has scale-like, aromatic leaves. It can tolerate shade and is often planted as a hedge or screening plant.



Pine

- Needles are connected in bundles by a band called a “fascicle,” bundles of needles attach to branches in groups of two, three or five.
- Pine needles longer than spruce needles.
- Austrian, Scotch, jack and red pines have two needles per bundle.
- Red and white pine are two of the most common Minnesota natives found in Minnetonka, while ponderosa, Austrian and Scotch pine are three of the most common non-native pines found in the city.



Firs and hemlocks

- Balsam fir and Canadian hemlock are the only fir and hemlock native to Minnesota.
- Both are shade tolerant and slower growing than other evergreen trees.
- Balsam fir needles are flat and have two silvery lines on the underside.
- Balsam firs have prominent “blisters” on the bark, called pitch pockets, and are often used as Christmas trees since they retain their needles and have an aromatic scent indoors.
- Canadian hemlock needles are short and attached to branches by a peg-like structure, while cones are small and oval and found on twig ends.
- While not native to Minnetonka, Canadian hemlock can grow in shade and could be planted more frequently in the forest understory.



Tamarack (larch)

- One of few coniferous trees native to Minnetonka, and only deciduous conifer tree found in Minnesota.
- Needles turn yellow in autumn, then drop prior to winter.
- Minnetonka contains a few remnant tamarack swamps, and tamaracks are also planted in rain gardens in the city hall parking lot.



Recycling holiday trees, cardboard

CHECK WITH YOUR RESIDENTIAL REFUSE hauler for pick up and recycling of your tree. Haulers have a specific period of time or limited days they collect trees. Check the last bill you received or call the hauler. Additional fees may apply, depending on the refuse company and your level of service.

Trees will be accepted when the city brush drop-off program opens in mid-April 2010. Some private nurseries and private compost sites accept trees, for a fee. For more information call your refuse hauler or contact Dean Elstad, recycling coordinator, at (952) 988-8430.

Recycling corrugated cardboard

To recycle corrugated cardboard boxes, flatten them and set them alongside your recycling container. It is not required to cut up the boxes or tie them in bundles. ♻️

2010 recycling collection schedule

THE UPCOMING CHRISTMAS AND NEW Year's holidays will not change curbside recycling collection days.

In 2010, only three holidays will delay curbside recycling collection in Minnetonka:

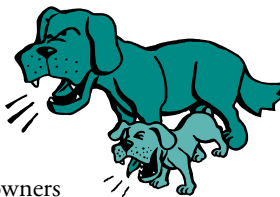
- **Memorial Day**, May 31: collection Tuesday, June 1, for residents west of I-494 and Wednesday, June 2, for residents east of I-494.
- **Independence Day**, July 4 (observed July 5): collection Tuesday, July 6, for residents west of I-494 and Wednesday, July 7, for residents east of I-494.
- **Labor Day**, Sept. 6: collection Tuesday, Sept. 7, for residents west of I-494 and Wednesday, Sept. 8, for residents east of I-494. ♻️

A reminder about barking dogs, trash bins

BARKING DOGS AND TRASH OR RECYCLING containers left in public view — those are two of the most common complaints expressed by Minnetonka residents about their neighbors. While they may seem like minor issues to you, please be considerate of your neighbor's environment by complying with these city ordinances.

Barking dogs

Sometimes pet owners will put their dogs outside while they conduct household tasks or run errands. It's important to monitor your dog and be sure it isn't barking continuously while outside — even if you can't hear it, your neighbors probably can. City ordinance prohibits excessive barking, which is defined as repeated noise over at least a ten-minute period with one minute or less lapse of time between each animal



noise during that ten-minute period. This ordinance is enforced 24 hours a day, seven days a week, all year round. Call the police department at (952) 939-8500 to report a barking dog.

Trash and recycling bins

City ordinance requires that all trash and recycling bins be stored out of public view, either inside a garage or behind a screened enclosure, except for the evening before and the day of trash and/or recycling collection. While your bins may be out of sight for you, they may not be for your neighbors.

If you recognize yourself in either of these, but think your neighbor hasn't noticed or isn't bothered, you may want to reconsider — it's more likely your neighbor hasn't complained because they don't want to cause hard feelings. Please, take a few minutes to consider your behavior and to think about what kind of neighbor you'd like to be so that Minnetonka's neighbors can be pleasant for everyone. ♻️

Green up your winter celebrations

FROM THANKSGIVING TO NEW Year's, household waste increases by more than 25%. Food waste, packaging, wrapping paper and decorations — it adds up to one million tons a week to the nation's garbage piles. It's time to think about changing the way we celebrate at the holidays and throughout the year, so that we can all celebrate a cleaner environment.

With a little planning and forethought, the special meals, parties, gifts and extra entertaining don't have to increase your household trash.

- When buying gifts, food or beverages look for containers with little or no packaging or packaging that can be recycled. Avoid over-packaged products.
- Use returnable beverage containers whenever possible.
- For parties, use washable/reusable utensils, plates, cloth napkins and tablecloths instead of single-use disposable paper or plastic. Reusable party supplies can also be rented.
- Give environmental gifts such as cloth shopping bags, napkins, tablecloths, handkerchiefs, compact fluorescent light bulbs or a subscription or donation to an environmental organization.
- Look for cards and wrapping paper made with recycled paper.
- Look for creative, alternative ways to wrap gifts by using recycled or recyclable materials. Use pages from newspapers or decorate paper bags. Place gifts in reusable gift bags, storage containers or new towels or tablecloths.
- Save and reuse wrapping paper, boxes, ribbons and bows for next season. Purchase reusable decorations and garlands.
- Give gift certificates or tickets for concerts, theater or sporting events. Give a homemade gift of food or a dinner invitation.
- Alternatives to real Christmas trees are artificial trees or potted trees or plants. Check with your refuse hauler about recycling Christmas trees after the holidays.
- Give recycling gifts such as a can crusher or supply of stationery, cards and gift wrap for all occasions made with recycled paper.
- Make a New Year's resolution to reduce waste, recycle and pay attention to the amount of garbage your household produces.

For more information, visit www.reduce.org or call Dean Elstad, city of Minnetonka recycling coordinator, at (952) 988-8430. ♻️



Upcoming events for Minnetonka seniors

DON'T MISS OUT ON THE FUN AND friendship at Minnetonka Senior Services! Located at the Minnetonka Community Center, 14600 Minnetonka Blvd., Minnetonka, Senior Services offers a wide variety of classes, programs, and activities for active older adults. For more information, or to sign up for the free monthly newsletter, the *Minnetonka Script*, visit www.eminnetonka.com.

Registration for winter and spring classes starts Dec. 3 at 8:30 a.m. Non-residents may register starting Dec. 4.

Defensive Driving Classes

Call the Minnesota Highway Safety Center at 1-888-234-1294 to register.

Four-Hour Course: \$18

Dec. 10, 9 a.m. – 1 p.m.
Refreshments provided but no lunch.

Special Events

Parkinson's Support Group

Dec. 8, 5:30 p.m.
Call (952) 939-8393 for information.

Register for winter skating lessons

SIGN UP FOR WINTER SKATING lessons with the Minnetonka Ice Arena's All Season Skating School! The lesson program is endorsed by the Ice Skating Institute and offers instruction for skaters ages 3 through adult. Class information and registration materials are available by calling the Minnetonka Ice Arena at (952) 939-8310 or by visiting the city of Minnetonka Web site at www.eminnetonka.com. The 12-week winter session begins January 5, 2010. Register now as space is limited! ☺



Holiday Treats

Dec. 10, 10:30 a.m. – 12 p.m.
Decorate your own holiday cookie, the enjoy socializing over a cup of coffee and your cookie. Call (952) 939-8393 by Dec. 7 to reserve a spot at this free event.

Medicare Part D

Dec. 10, 10 a.m.
Learn more about Medicare Part D. Call (952) 939-8393 by Dec. 8 to reserve a spot at this free event.

Holiday Brunch

Dec. 15, 11 a.m.
Join friends in celebrating the holidays at the Minnetonka Community Center. Enjoy a brunch buffet of egg bake, French toast, scalloped potatoes, green beans, oven chicken, Caesar salad, fruit bowl and assorted desserts. Cost is \$7 due by Dec. 11.

New Friend Social Club

Dec. 16, 6:30 p.m.
Meet new people in a non-threatening social environment.

Scrapbooking Club

Mondays, 1 – 3 p.m.
Stop by and finish your scrapbook by the holidays! ☺

Follow these winter safety tips

WHILE WALKERS, RUNNERS AND BIKERS should obey traffic regulations year-round in order to be safe when using roadways and trails, winter brings special considerations.

- When walking or running in low light conditions, wear light-colored or reflective clothing to create the most visible profile for traffic.
- Carry or wear a lighted device.
- Every pedestrian or bicyclist crossing a roadway at any point other than within a marked crosswalk, or at an intersection with no marked crosswalk, must yield the right-of-way to all vehicles on the roadway.
- Remember, the distance for safely stopping a vehicle increases with winter road conditions.
- Bicyclists should drive on the right side of the roadway with traffic and signal their turns — and you are encouraged to wear a helmet!
- Watch out for snowplows and snow removal equipment on Minnetonka roads and trails. ☺

Skating rinks open December 19

SKATING RINKS WITH WARMING HOUSES ARE AVAILABLE FOR YOUR ENJOYMENT AT SEVEN Minnetonka park locations, listed below. Weather permitting, rinks will open Saturday, December 19, and remain open until Monday, February 15. Call the weather hotline number at (952) 939-8355 for information on conditions, closings and updates. ☺

Minnetonka Rink Hours

	Sunday	Monday	Tuesday	Wednesday	Thursday	Friday	Saturday
Boulder Creek	12–5 p.m.	4:30–9 p.m.	4:30–9 p.m.	4:30–9 p.m.	4:30–9 p.m.	4:30–9 p.m.	12–5 p.m.
Covington	12–5 p.m.	4:30–9 p.m.	4:30–9 p.m.	4:30–9 p.m.	4:30–9 p.m.	4:30–9 p.m.	12–5 p.m.
Gatewood	12–5 p.m.	4:30–9 p.m.	4:30–9 p.m.	4:30–9 p.m.	4:30–9 p.m.	4:30–9 p.m.	12–5 p.m.
Glen Lake	12–5 p.m.	4:30–9 p.m.	4:30–9 p.m.	4:30–9 p.m.	4:30–9 p.m.	4:30–9 p.m.	12–5 p.m.
Gro Tonka	12–5 p.m.	4:30–9 p.m.	4:30–9 p.m.	4:30–9 p.m.	4:30–9 p.m.	4:30–9 p.m.	12–5 p.m.
McKenzie	12–5 p.m.	4:30–9 p.m.	4:30–9 p.m.	4:30–9 p.m.	4:30–9 p.m.	4:30–9 p.m.	12–5 p.m.
Meadow	12–5 p.m.	4:30–9 p.m.	4:30–9 p.m.	4:30–9 p.m.	4:30–9 p.m.	4:30–9 p.m.	12–5 p.m.
Spring Hill	12–5 p.m.	4:30–9 p.m.	4:30–9 p.m.	4:30–9 p.m.	4:30–9 p.m.	4:30–9 p.m.	12–5 p.m.

Winter Break (12/21– 12/23, 12/26 – 1/3), Martin Luther King Jr. Day (1/18), President's Day (2/15) Hours: 12–9 p.m.

Christmas Eve (12/24) Hours: 12–5 p.m.

Christmas Day (12/25): All sites closed.

minnetonka memo

December 2009



PRESORTED
STANDARD
U.S. POSTAGE
PAID
CITY OF MINNETONKA

A publication of the city of Minnetonka
14600 Minnetonka Boulevard, Minnetonka, MN 55345 • (952) 939-8200
8 a.m. to 4:30 p.m. Monday–Friday

Mayor Terry Schneider(952) 939-8389 Home: (952) 934-9529tschneider@eminnetonka.com Meetings with the mayor may be scheduled by calling (952) 939-8211.	Council <i>At Large:</i> Dick Allendorf... (952) 933-6231 dallendorf@eminnetonka.com Amber Greves... (952) 931-3960 agreves@eminnetonka.com <i>Ward 1:</i> Bob Ellingson... (952) 931-3065 bellingson@eminnetonka.com <i>Ward 2:</i> Tony Wagner... (952) 512-1817 twagner@eminnetonka.com <i>Ward 3:</i> Brad Wiersum... (612) 817-3713 bwiersum@eminnetonka.com <i>Ward 4:</i> James Hiller... (952) 974-1003 jhiller@eminnetonka.com
City Manager John Gunyou(952) 939-8200	Minnetonka Mike(952) 939-8586 mike@eminnetonka.com
Newsletter Editor Jacque Larson(952) 939-8200	POLICE-FIRE: Emergency 9-1-1
E-mail: comments@eminnetonka.com	Non-emergency (952) 939-8500 or 9-1-1
Internet: www.eminnetonka.com	

ECRWSS
POSTAL PATRON

Calendar

City of
Minnetonka

December
2009

Call (952) 939-8200
for meeting
locations.

S	M	T	W	T	F	S	Call (952) 939-8200 for meeting locations.
		1	2	3	4	5	3 Planning Commission, 6:30 p.m. 17 Planning Commission, 6:30 p.m.
6	7	8	9	10	11	12	7 City Council, 6:30 p.m. 21 City Council, 6:30 p.m.
13	14	15	16	17	18	19	8 Senior Advisory Board, 10 a.m. 25 Christmas, <i>city offices closed</i>
20	21	22	23	24	25	26	14 City Council study session, 6:30 p.m. (<i>Topic: To be determined.</i>) 28 Economic Development Authority, 6 p.m.
27	28	29	30	31			

All meetings listed above are open to the public. Meeting dates and times are subject to change—please check www.eminnetonka.com for the latest information.

Minnetonka City Council and Planning Commission meetings are broadcast live on cable channel 16, and replays are available Mondays and Wednesdays at 6:30 p.m.; Fridays and Saturdays at noon, or anytime via videostream at www.eminnetonka.com. Agendas for council meetings are available on the city's Web site by the Friday afternoon prior to the meeting, and planning commission agendas are available by the Monday prior to the meeting.

Staying informed about city projects

THE CITY REGULARLY RECEIVES applications for projects that require planning commission and/or city council approval. Information on these, as well as many other city projects, is regularly updated on the city's Web site. If you'd like to stay informed, visit "MyMinnetonka" at www.eminnetonka.com—click on "MyMinnetonka" under "Top Picks." Through MyMinnetonka, you can learn about new projects in the city; provide online feedback on projects during their approval process, and receive email updates on projects. Planning commission meeting agendas are posted the Monday prior to the meeting. Visit www.eminnetonka.com for information. ∞

Visit the Mills Landing Shoppe

STOP BY THE MILLS LANDING GIFT Shoppe, 12810 Minnetonka Blvd., to browse a collection of homemade gifts. The Shoppe is open Wednesdays through Saturdays from 10 a.m. to 4 p.m. Visit the Web site at www.millslandingshoppe.com or call (952) 933-5214 for more information. The Mills Landing Shoppe is a Minnetonka Senior Services program. ∞

