

minnetonka memo

*A Newsletter from the City of Minnetonka
May 2005*

Celebrate Earth Day

CELEBRATE ARBOR MONTH AND EARTH Day by planting trees in Big Willow Park Thursday, May 19, from 5:30–7:30 p.m. If you've ever wondered how to plant and care for trees, or if you've been curious about the role of trees in the natural environment, this is the event for you!

Planting supplies and treats will be provided. Participants will receive a free t-shirt, tree seedlings, and native wildflower seed packets. Dress for the weather, and be prepared to get dirty and ask questions! Meet at Minnetonka Public Works, 11522 Minnetonka Blvd. □



Ice Revue skates back into town

MINNETONKA ICE ARENA'S ALL SEASON Skating School is proud to present the 31st Annual Silver Skates Ice Revue, "Tale Spins." More than 250 skaters of all levels from Minnetonka and surrounding areas are featured this year. Show times are Thursday, May 5, 6:30 p.m.; Friday, May 6, 7 p.m.; and Saturday, May 7, 5 p.m.

Admission is \$6 for adults and \$4 for school-aged children. Admission is free for pre-school-aged children. As always, senior citizens and individuals with special needs are granted free admission to our Thursday night performance at 6:30 p.m. We look forward to bringing you! Don't forget to bring a coat or blanket, as it does get cold in the ice arena. □

INTERESTED IN SKATING LESSONS? Summer skating lessons for both youth and adults are held Monday evenings beginning June 13, 2005. For more information call the Minnetonka Ice Arena at (952) 939-8310 or visit www.eminnetonka.com.



Don't miss this year's Silver Skates Ice Revue, "Tale Spins!" set for May 5, 6 and 7, at the Minnetonka Ice Arena.

Register now for Minnetonka Summer Festival events on June 25

BRING THE ENTIRE FAMILY FOR children's rides, face painting, ice skating and stage shows at the Minnetonka Summer Festival, Saturday, June 25, on the grounds of the Minnetonka Civic Center.

In conjunction with the festival, don't forget to stop by the Old-Fashioned Ice Cream Social at Burwell House, complete with free tours, entertainment, antique market and food concessions.

The day will conclude with the annual fireworks display — a grand finale to the day's events. A detailed schedule of events will be published in next month's newsletter, to be mailed in mid-June.

Registrations are now being accepted for the following athletic events:

8K Race, 2 Mile Fun Run and Children's Tot Trot

The 8K race starts at 7:30 a.m. This certified course is set in a beautiful wooded area that is generally flat with some rolling hills. The 2 Mile Fun Run starts at 8:45 a.m., and the Children's Tot Trot is set for 10 a.m. Races begin and end in front of Minnetonka City Hall. Call (952) 939-8203 to register, or email lburns@eminnetonka.com for more information.

Softball Tournament

This one-day men's softball tournament is held Saturday, June 25, at Big Willow Park in Minnetonka and Central Park in Hopkins. The tournament is limited to 12 teams, with each team guaranteed at least three games. Awards are presented to the top three teams. Entry fee is \$90 per team. Call (952) 939-8203 to request a registration form.

Adult/Child Golf Tournament

A family oriented golf tournament will be held Saturday, June 26, at 8 a.m. (check-in at 7:30 a.m.) at the Glen Lake Golf and Practice Center in Minnetonka. The tournament uses a shotgun start and there will be special contests throughout the tournament. The entry fee of \$26 per team includes a meal at the Minnetonka Summer Festival. This activity is for children between 8 and 15 years old. Call (952) 939-8203 to register and refer to Course #8736. □

Inside...

Attention, parents!	page 2
Music in the Park	page 3
Drinking Water Report	pages 4-5
Hazardous waste collection	page 6
Special one-day drop-off	page 7
Spring leaf drop-off	page 8
Beach passes	page 10



Attention, Parents!

City of minnetonka

14600 Minnetonka Boulevard Minnetonka, MN 55345 952-939-8200 Fax 952-939-8244

April 2005

Dear Parents:

As the end of the school year approaches, there will be many opportunities for your son or daughter to participate in celebrations such as prom and graduation parties. As police officers and parents, we care about the safety of your children. We are concerned about the temptations of alcohol use and choices they may have to face. We also know that this is an exciting time for you as parents. It is amazing how one day you can't wait for your child to grow up and the next day they have.

If you are planning to host a party at your home or other location such as a hotel/motel, carefully consider your responsibilities in doing so. Please remember that selling, furnishing or serving alcohol to minors is a criminal offense in Minnesota. In addition, any adult who knowingly provides alcohol to a minor can be exposed to personal liability for injuries that occur from that minor's intoxication. Please read the following information to further answer any questions you may have about minors and alcohol.

It is important to remember that giving young people lectures or using threats isn't the answer to preventing underage drinking. It takes more than citing the law or simple declarations of your rules to encourage youth to do the right thing. Speaking openly and honestly with one another about issues that really matter is one of the most valuable gifts that families can share.

This is one of the most memorable times for your son and daughter. By the combined efforts of parents, law enforcement agencies, educators and community leaders, let's work together to "Reduce the Use" and help our young people make the right choices!

Sincerely,

JOY M. RIKALA
Minnetonka Police Chief
And the officers of the Minnetonka Police Department

- 1. What is contributing to the delinquency of a minor?** It is a gross misdemeanor for any person to in any way encourage, cause or contribute to the delinquency or deprivation of any minor (Minnesota Statute 260B.425). Providing alcohol or drugs would be construed as contributing to the delinquency of a minor.
- 2. What are the legal consequences for contributing to the delinquency of a minor?** There are both criminal and civil legal consequences that can result from contributing to the delinquency of a minor by providing the minor with alcohol or other drugs.
- 3. What are the criminal legal consequences?** Contributing is considered a gross misdemeanor which carries a maximum penalty of one year in jail, \$3000 fine, or both.
- 4. What are the civil legal consequences?** A lawsuit could be filed against the adult who provided the alcohol or drugs if any injury should occur. An example would be a minor who acquires the alcohol in your house and then injures or kills someone else in a car accident. The resulting civil lawsuit could be for damages limited only by the mood of the jury.
- 5. What is the dram shop law?** This law was enacted to make liable any person who knowingly supplies alcoholic beverages to anyone under 21, or to an intoxicated person. The law applies to individuals and businesses.
- 6. What is social host liability?** Social host liability is an extension of the Dram Shop law which stipulates that a person serving or supplying alcohol to a minor is liable for damages in a civil lawsuit. In one lawsuit, a neighbor who served as bartender for a graduation party was held liable in addition to the parent.

- 7. Can parents or social hosts face criminal charges?** Yes, any adult who supplies a minor with alcohol could face charges of contributing, a gross misdemeanor, which carries a maximum fine of \$3000, one year in jail, or both.
- 8. What are the penalties for beverage dealers for providing alcohol to minors?** Beverage dealers could have their license suspended or revoked. The person making the sale would face criminal charges for contributing to the delinquency of a minor. If damages or injuries result from the sale, the dealer could be named in any lawsuit.
- 9. Are there limits to the amount of personal liability in a civil lawsuit?** The jury could award any amount of damages in a lawsuit. A persuasive lawyer and a case which creates a sympathetic jury could produce awards in the million dollar plus range. Personal assets may not be protected from this judgment.
- 10. Does your homeowners' insurance cover liability when alcohol is involved?** Homeowners' insurance is intended to cover those incidents for which the results were not foreseen or intended. A violation of the law, such as providing alcohol to minors, could eliminate any responsibility on the part of the insurance company.
- 11. Could parents be held liable if their minor child consumes alcohol obtained from their home?** The parents could be liable in a civil lawsuit. If the parents knowingly and willingly provide the alcohol to the minor, the outcome of the lawsuit would be very predictable. If the parents did not have a locked liquor cabinet and the alcohol was accessible to the minor, the parents

probably would be held liable even if it was consumed without their knowledge. The parents could also be liable if their minor child provides alcohol to another minor even if they have no knowledge that this was done. Alcohol is a controlled substance and parents need to ensure that this is not readily accessible to minors.

- 12. Could parents be held liable if they rent a motel room for their minor child and alcohol is consumed there?** The parents could be held liable even though they did not know alcohol was being consumed. There is no limit to the amount of damages that could be recovered in a civil lawsuit if some injury should occur in which the minor was at fault.
- 13. What resources are available for minors in need of help with alcohol/drug problems?** There are several local agencies that can provide services or direct you to the appropriate agency. Consult any of the following: school personnel/counselors, school addiction counselors, Native American program office, treatment centers, clergy and church personnel and law enforcement.
- 14 Not a drop...Kiss your license goodbye if you drink a drop of alcohol and drive.** In Minnesota, it's illegal to drink if you're under 21. If you drink and drive, you are not only subject to the state's DWI laws, but you also face penalties under Minnesota's "NOT A DROP" law. Under "NOT A DROP", if an officer observes you operating a motor vehicle and determines you've been drinking, you'll lose your license. For how long? From 30 to 180 days. The length of suspension will depend on your prior record. (MN Statutes 340A.503 and 169.33)

Don't miss Music in the Park!

THIS YEAR'S MUSIC IN THE PARK concert series at Westridge Plaza Pavilion promises six evenings of great performances, all free to the public! Bring a blanket or a lawn chair and enjoy live music Wednesdays from 7 to 9 p.m., beginning June 15 and ending August 3 (no concert July 6 or 13). Local artists and bands will perform a variety of music styles throughout the summer. Bring your friends and family!

- June 15 — The Blue Drifters
(bluegrass, jazz, folk)
- June 22 — Lehto & Wright
(Celtic/folk rock)
- June 29 — Carolyn Jaynes
(oldies, show tunes)
- July 20 — Jack Norton and the Mullet River Boys
(folk rock)
- July 27 — Signe Hensel
(jazz)
- Aug. 3 — Celebration Brass
(classical, jazz, Dixie)



Westridge Plaza Pavilion, located at 11280 Wayzata Blvd. in Minnetonka, is the site of this year's Music in the Park series.

Happy 50th, Minnetonka!

IT'S BEEN 50 YEARS SINCE MINNETONKA incorporated, and we need your help to plan the city's birthday celebration!

Residents, business owners, elected and appointed officials, and school district representatives began meeting in March to plan the events surrounding the city's 50th anniversary, but additional volunteers are always needed and welcomed!

If you'd like to know more about how you can get involved, call Jacque Larson, community relations manager, at (952) 939-8207, or attend the next planning meeting Thursday, May 12, from 7:30-8:30 a.m. at the Minnetonka Community Center. □

Who to call about potholes

ROADS RUNNING THROUGH MINNETONKA ARE OWNED BY THE CITY, COUNTY OR state. Below is a list of major roads in Minnetonka along with phone numbers to contact the appropriate level of government if you have a concern about pot holes or other road conditions. If you are unsure which office to call, please start with the Minnetonka Public Works department at (952) 988-8400.

Please be aware, if you have concerns about the condition of parking lots at shopping centers or in other commercial areas, please contact a business owner near the parking lot to express your concern. These lots are privately owned and not maintained by the city. Any questions about parking lots at city-owned facilities (i.e. parks, city hall, Williston Center) should be directed to the Minnetonka Public Works department. □

MnDOT (651) 582-1550

- I-394
- I-494
- State Hwy. 7
- State Hwy. 169



Hennepin County (763) 745-7700

- County Road 3 — Excelsior Blvd.
- County Road 4 — Eden Prairie Road/ Woodhill Road
- County Road 5 — Minnetonka Boulevard
- County Road 15 — Gleason Lake Road
- County Road 16 — McGinty Road
- County Road 60 — Baker Road
- County Road 61 — Plymouth Road
- County Road 62 — Crosstown
- County Road 73 — Hopkins Crossroad
- County Road 101

Minnetonka city streets — (952) 988-8400

Burwell House tours start June 4

THE 2005 BURWELL HOUSE TOUR SEASON starts Saturday, June 4, and continues through Sept. 24. Tour hours are Tuesdays, noon to 3 p.m.; Saturdays, noon to 4 p.m.; and Sundays, 1 to 3 p.m.

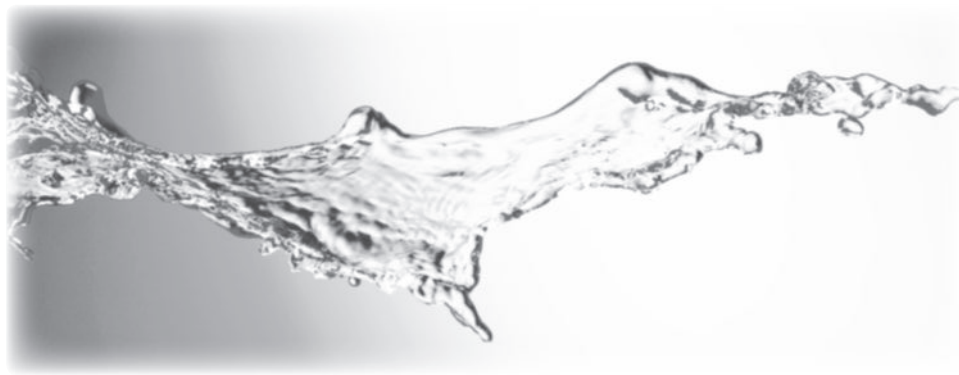
Take a guided tour and learn about Minnetonka's early history, the Burwell family, flour milling and Victorian times. The house, located at 13209 East McGinty Road in Minnetonka, has been meticulously restored and furnished to its 1894 state. New acquisitions and exhibits are always being added.

Plan a picnic along Minnehaha Creek, add a tour to your bike trip on the trail system, or bring out-of-town guests for one of the best historic house museums in the area! For more information call Laura Ronbeck at (952) 939-8219 or email ironbeck@eminnetonka.com. □



This summer, plan to take a guided tour of Burwell House. (Photo taken by Neil Kveberg.)

Minnetonka Drinking Water Report



The city of Minnetonka is issuing laboratory test results for the drinking water provided to residents during 2004. Each of the past seven years, the Minnetonka Utilities Department has distributed this annual report to summarize drinking water quality for the previous year. This report fulfills an obligation the city's Water Utility has to provide accurate and timely information about your drinking water and the city's water system. This year's report again delivers good news: ***no contaminants have been found that exceed levels set by EPA for safe drinking water.***

If you have questions about your drinking water, please contact Jim Malone at jmalone@eminnetonka.com or (952) 988-8400. If you would like information about opportunities for public participation in decisions that may affect the quality of water, please contact Minnetonka Public Works at (952) 988-8400.



Water source

The city of Minnetonka operates 18 wells that draw water from the Prairie Du Chien-Jordan aquifer. The wells range in depth from 405 to 575 feet. The Prairie Du Chien-Jordan formation consists of limestone and granular sandstone that was deposited on the shores of an ancient sea millions of years ago. The water resides in cracks and spaces in the rock. This formation covers much of the Upper Midwest.

The sources of drinking water (both tap water and bottled water) include rivers, lakes, streams, ponds, reservoirs, springs, and wells. As water travels over the surface of the land or through the ground, it dissolves naturally occurring minerals and, in some cases, radioactive material, and can pick up substances resulting from the presence of animals or humans. Before a water source is used for a supply, it is tested for contaminants and other water quality parameters. Test results for the city of Minnetonka water supply are listed on the next page. The water provided to customers may meet drinking water standards but the Minnesota Department of Health has determined that one or more sources of your drinking water is susceptible to contamination. If you wish to obtain the entire source water assessment regarding your drinking water, please call (651) 215-0800 or (800) 818-9318 during normal business hours. You can also view it online at <http://www.health.state.mn.us/divs/eh/water/swp/swa/>.

Are contaminants a concern?

Some people may be more vulnerable to contaminants found in drinking water than the general population. Immuno-compromised persons, such as persons with cancer undergoing chemotherapy, persons who have undergone organ transplants, people with HIV/AIDS or other immune system disorders, some elderly, and infants, can be particularly at risk from infections. These people should seek advice about drinking water from their health care providers. EPA/Centers for Disease Control guidelines on appropriate means to lessen the risk of infection by *Cryptosporidium* and other microbial contaminants can be obtained by calling the EPA's Safe Drinking Water Hotline, (800) 426-4791.

Drinking water regulations

In order to ensure that tap water is safe to drink, the EPA prescribes regulations that limit the amount of certain contaminants in water provided by public water systems. Food and Drug Administration regulations establish limits for contaminants in bottled water that must provide the same protection for public health. Drinking water, including bottled water, may reasonably be expected to contain at least small amounts of some contaminants. The presence of contaminants does not necessarily indicate that water poses a health risk. More information about contaminants and potential health effects can be obtained by calling the EPA's Safe Drinking Water Hotline, (800) 426-4791.



Lawn watering schedule

To effectively conserve the community's water resources, city of Minnetonka ordinances permit watering under the following conditions:

- No watering between 11 a.m. and 5 p.m.
- Even-numbered addresses can water on even-numbered calendar days, and odd-numbered addresses can water on odd-numbered calendar days before 11 a.m. and after 5 p.m.
- Watering by hand-held hose can be done at any time.
- Watering of new sod, seed, shrubbery, or landscaping can take place outside of restricted times if residents have obtained a permit number from the Public Works Department.

Private wells are exempt from these regulations provided the well has been registered and the resident posts a furnished yard sign. If you have questions about these regulations, or need to obtain a permit number, call (952) 988-8400 for details.

Minnetonka Drinking Water Report

Water supplied by the city of Minnetonka is tested throughout the year by the Minnesota Department of Health for nearly 100 contaminants regulated by the EPA. Test results for 2004 are listed in the table below. Only those substances that were detected are listed in the table. **No contaminants were found that exceeds limits for safe drinking water.**

Monitored substances can be divided into five testing categories:

- **Microorganisms**, such as viruses and bacteria, which may come from sewage treatment plants, septic systems, agricultural operations, and wildlife
- **Inorganic contaminants**, such as salts and metals, which can occur naturally or come from urban stormwater runoff, industrial or domestic wastewater discharges, oil and gas production, mining, or farming
- **Pesticides and herbicides**, which may come from agriculture, urban stormwater runoff, and residential uses
- **Organic chemicals**, including synthetic and volatile organic chemicals, which are by-products of industrial processes and petroleum production and can also come from gas stations, urban stormwater runoff, and septic systems
- **Radioactive contaminants**, which can occur naturally or result from oil and gas production and mining activities

Water Testing Terms and Definitions

The **Amount Found** can be the highest amount found or the average of all samples tested, depending on the regulation. If multiple samples were tested in 2004, the lowest and highest level detected are listed in the **Range of Detections**.

Regulated substances have Maximum Contaminant Levels (**MCLs**) set by the EPA. This is the highest level allowed in drinking water. Some contaminants also have MCL goals (**MCLGs**). This is the level of a substance where there is no known or expected health risk. MCLGs allow for a margin of safety. MCLs are set as close to MCLGs as feasible using the best available water treatment processes. Unregulated substances do not have MCLs. They are assessed by state standards known as health risk limits. If an unacceptable amount of any substance is ever found in the water, the city of Minnetonka will notify residents and take action to eliminate the problem.

The MCL for lead and copper is known as the **Action Level**. This is the concentration which, if exceeded, triggers treatment or other requirements a water system must follow. Ninety percent of all samples tested must be below this concentration. Lead and copper get into tap water via corrosion of home plumbing systems. Minnesota Department of Health lab tests show Minnetonka is in compliance for lead and copper.

MRDL: Maximum Residual Disinfectant Level

MRDLG: Maximum Residual Disinfectant Level Goal

Other Definitions:

- **ppb:** parts per billion or micrograms per liter.
- **ppm:** parts per million or milligrams per liter
- **pCi/L:** picocuries per liter, a measure of radioactivity
- **nd:** Not Detected

Radon is a radioactive gas which is naturally occurring in some groundwater, and is caused by the erosion of natural deposits. Testing on 8/06/2001 showed average radon levels of 183 pCi/L in Minnetonka water. It poses a lung cancer risk when gas is released from water into air (as occurs during showering, bathing, or washing dishes or clothes) and a stomach cancer risk when it is ingested. Because radon in indoor air poses a much greater health risk than radon in drinking water, an Alternative Maximum Contaminant Level (AMCL) of 4000 pCi/L may apply in states that have adopted an indoor air program, which compels citizens, homeowners, schools, and communities to reduce the radon threat from indoor air. For states without such a program, the MCL of 300 pCi/L may apply. Minnesota plans to adopt an indoor air program once the radon rule is finalized.

Laboratory Results for Minnetonka Tap Water: 2004

Detected Substance	Units of Measure	MCL	MCLG	Amount Found	Range of Detections	Typical Source in Drinking Water
Alpha Emitters	pCi/L	15.4	0	9.65	3.1–10.5	Erosion of natural deposits
Arsenic 6/20/02	ppb	50	0	2.01	—	Erosion of natural deposits; Runoff from orchards, glass and electronics production wastes
Barium 6/20/02	ppm	2.0	2.0	0.16	—	Discharge of drilling wastes, metal refineries; Erosion of natural deposits
Combined Radium	pCi/L	5.4	0	3.1	nd–4.1	Erosion of natural deposits
Fluoride	ppm	4.0	4.0	1.28	1–1.3	Additive for dental health, aluminum and fertilizer factories
Nitrate (as Nitrogen)	ppm	10.0	10.0	0.71	nd–0.71	Erosion of natural deposits, fertilizer runoff, septic tanks, sewage
Total Trihalomethanes	ppb	80	0	16.68	6.0–25.2	By-product of drinking water disinfection
Lead 8/29/03	ppb	90% of samples must be <15 ppb	—	90% of samples < 2.0	0 out of 30 homes > 15 ppb	Corrosion of home plumbing systems, erosion of natural deposits
Copper 8/29/03	ppm	9-% of samples must be <1.3 ppm	—	90% of samples < 1.32	3 out of 30 homes > 1.3 ppm	Corrosion of home plumbing systems, erosion of natural deposits
Sodium 6/20/02	ppm	No established EPA limits	—	11	—	Erosion of natural deposits
Sulfate 6/20/02	ppm	No established EPA limits	—	20	—	Erosion of natural deposits
Mercury	ppb	2	2	0.1	—	Erosion of natural deposits, discharge, runoff
Haloacetic Acid	ppb	60	0	7.3	0.6–10.4	Byproduct of drinking water disinfection
Fecal Coliform and E.Coli		>0 present	0 present	One sample found	Follow-up sample showed none present	Human and animal fecal waste
Chlorine	ppm	MRDL 4.0	MRDLG 4.0	0.39 Quarterly Avg.	0.3–0.9 Monthly Avg.	Water additive used to control microbes

2005 MINNETONKA RECYCLING UPDATE



Hennepin County Community Collection for Unwanted Garden and Household Hazardous Waste (HHW)

The following HHW and problem materials are accepted:

- Paint, stains, paint strippers, wood preservatives, thinners, gasoline (container will not be returned), lighter fluid, insecticides, herbicides, solvents, acids, adhesives, caustics, degreasers, rodent poisons, moth balls, spot remover, chemistry sets, photo chemicals, mercury, drain or oven cleaners, floor finishes, metal or furniture polish, aerosol cans, driveway sealer. *This is not a complete list. Call (612) 348-3777 for more details.*
- Fluorescent or high intensity discharge (HID) lamps and ballasts (maximum 10 bulbs)
- Household batteries (flashlight, D, C, AA, AAA, 6 and 9 volt cells)
- Lead acid vehicle batteries
- Rechargeable batteries and rechargeable appliances
- Electronics: (television, stereo console, computer, printer, monitor, VCR, or radio)

Thursday, May 19
Friday, May 20
Saturday, May 21
9 a.m. – 4 p.m.
 Ice Arena/City Hall Parking Lot
 (upper parking lot)
 Minnetonka Civic Center
 14600 Minnetonka Blvd

Saturday, May 20, is the busiest day with longer waits in line. Consider bringing your household hazardous waste to one of the permanent facilities (see article below).
Please note: The Brooklyn Park facility will be under construction from May to December 2005.

There is no charge for dropping off HHW.

Please note:
 This HHW Drop-off is open to any Hennepin County resident and only accepts items from households. No hazardous waste or problem materials can be accepted from businesses, including home businesses and non-profit organizations.

Not accepted:
 Appliances, copiers, motor oil and motor oil filters, compressed gas cylinders, propane cylinders, explosives, radioactive materials, infectious waste or household garbage are **not** accepted at the community household hazardous waste collection.

For information, call Dean Elstad, Minnetonka recycling coordinator, at (952) 939-8217 or Hennepin County at (612) 348-3777.

Year-round HHW drop-off sites

Residents may bring household hazardous waste (HHW) to either of Hennepin County's permanent HHW drop-off facilities throughout the year:

8100 Jefferson Hwy., Brooklyn Park
1400 W. 96th St., Bloomington

There is no charge to drop off HHW.

Facilities are open Tuesday through Friday, 10 a.m. to 6 p.m.; Wednesday until 8 p.m.; and Saturdays 8 a.m. to 5 p.m. Closed Sundays, Mondays and holidays.

Household hazardous waste includes such items as paint, stain, thinners, solvents, pesticides, herbicides, cleaners, gasoline, oil, oil filters, aerosol cans, fluorescent and HID lamps, thermostats, switches and thermometers containing mercury, rechargeable appliances and batteries.

Also accepted for no charge are consumer electronics (TVs, radios, stereos, VCRs, camcorders, telephones, computers, monitors and printers).

Household appliances (microwaves, water heater, stove, freezer, washer, dryer, etc.) may be dropped off for a \$15 fee.

For more information call Dean Elstad, recycling coordinator, at (952) 939-8217 (please leave a message if you get voice mail) or Hennepin County at (612) 348-3777 (8 a.m. to 4:30 p.m., Monday through Friday).

Hennepin County Problem Material and HHW Drop-Off

Bloomington
1400 W. 96th St.

Hennepin County Transfer Station and HHW Drop-Off

Brooklyn Park
8100 Jefferson Hwy.

Under construction May–Dec. 2005. Call (612) 348-3777 for delays and closures or go to www.hennepin.us and search for Brooklyn Park facility.



2005 MINNETONKA RECYCLING UPDATE

HT

Special one-day drop-off



Saturday, June 4
8 a.m. – 3 p.m.

Ice Arena/City Hall Parking Lot (upper parking lot)
Minnetonka Civic Center, 14600 Minnetonka Blvd



Minnetonka residents may drop off the materials listed below. The charge for dropping off each item, if any, is listed in parentheses.

- **Appliances (\$12 each)**
Washer, dryer, dishwasher, stove, oven, cooktop, microwave, freezer, refrigerator, water heater, water softener, home furnace, trash compactor, garbage disposer, humidifier or dehumidifier.
- **Air conditioner (\$20)**
- **Electronics (No charge)**
Television, stereo console, computer, printer, monitor, radio or VCR.
- **Carpet & padding (\$1 per square yard for carpet and \$1 per square yard for padding)** Determine the number of square yards of carpet or the size of the room the carpet came from. Roll carpet and tape or tie rolls. Rolls of carpet must not exceed six feet in length and must be less than 12 inches in diameter.
- **Tires (\$3 for each car, trailer, or light truck tire; \$5 if tire is still on rim. \$15 for tractor or truck tire on split rim.)**
- **Batteries (No charge)**
All car, truck, motorcycle, and garden tractor batteries are accepted, as well as household batteries (D, C, AA, AAA, 6- and 9-volt cells, button batteries and rechargeable batteries.)
- **Fluorescent bulbs (No charge)**
Up to ten fluorescent bulbs will be accepted per vehicle. No bulbs will be accepted from business or commercial use. Please transport bulbs in a manner to avoid breakage.
- **Lumber (\$2 minimum, based on \$25 per cubic yard)** No railroad ties. No concrete.
- **Mattresses and box springs (\$8 per piece for single or twin size; \$12 per piece for double, queen, or king size)**
- **Chairs (\$5 small; \$10 large)**
- **Love seat (\$15 each)**
- **Couch/sofa (\$20 each)**
- **Hide-a-bed (\$30 each)**
- **Toilets and non-metal sinks (\$5 each)**
- **Scrap metal (No charge for clean scrap metal such as pipe, gutters, swing sets, barbecues, ducting, fencing etc.)**
Scrap metal must be clean. All plastic, rubber, wood and hazardous materials must be removed.
- **\$5 charge for "dirty" scrap metal items:**
For example: bicycle with tires, lawn chair with webbing, grills with wheels or handles, or lawn mower with wheels and/or plastic parts still attached. All engines must have oil and gas drained.
Additional charges apply for riding mowers, garden tractors, snow blowers or other large items.
- **Propane tanks \$1 small; \$6 large (anything larger than a two-pound tank).**
Payment will be accepted in cash or local checks payable to the city of Minnetonka.

NO GARBAGE OR HOUSEHOLD HAZARDOUS WASTE CAN BE ACCEPTED.

Please note: There will **not** be a charitable organization at the Special Drop-off accepting clothing and household goods this year.

Local charitable organizations that accept clothing and household goods include the following:

- **Bethesda Thrift Shop**
913 Mainstreet, Hopkins
(952) 939-0988
- **Goodwill Industries**
1025 Hill Street, Hopkins
(952) 935-2760
- **ARC Hennepin-Carver**
Pickup route information
(612) 866-8820
- **Value Village Thrift Store**
2751 Winnetka Ave, New Hope
(763) 544-0006
- **Vietnam Vets**
Pickup route information
(651) 778-8387

For more information about the Special Drop Off, call Dean Elstad, recycling coordinator, at (952) 939-8217 during business hours or visit www.eminnetonka.com, Hot Topics.

Free wood mulch available to residents

Free wood mulch is available 24 hours a day, seven days a week, in a bin on the east side of the Minnetonka Public Works facility, 11522 Minnetonka Boulevard. Please bring your own containers and hand tools for loading. For more information call (952) 988-8400.





Spring Leaf Drop-off Program

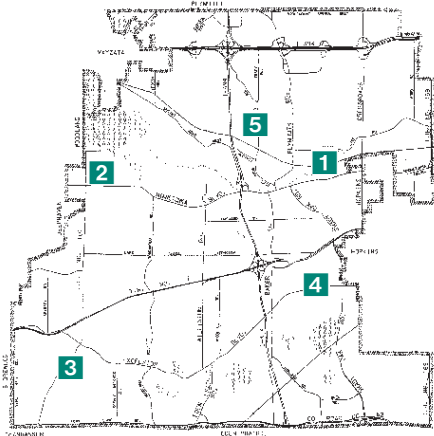
If you have other means of handling your leaves such as collection by your garbage hauler or backyard composting, **please use that option!** All garbage haulers offer curbside collection of yard waste on the same day as your garbage collection for a reasonable annual or monthly fee. The garbage hauler yard waste collection programs typically run mid-April through mid-November. **Check with your garbage hauler for details.**

Minnetonka residents may bring **bags** of leaves, yard and garden materials to one of the five drop-off sites on the dates and times shown below. Brush larger than ½ inch **will not** be accepted at leaf drop-off sites. See the article on brush drop-off for more details.

Saturdays: May 7, May 14
10 a.m. – 3 p.m.

Saturday Leaf Drop-off Sites

- 1 Public Works Facility Parking Lot**
11522 Minnetonka Blvd., ¼ mi. west of Co. Rd. 73, **use west entrance**
Two areas: one for **bulk** leaf drop-off, one for **bagged** leaf drop-off, follow signs.
- 2 Groveland School Parking Lot**
Minnetonka Blvd., east of Hwy. 101
- 3 Minnetonka Public Schools Service Center North Parking Lot**
5621 Hwy. 101
- 4 West Oaks Community Church Parking Lot**
Excelsior Blvd. west of Shady Oak Rd.
- 5 Meadow Park Parking Lot**
Oakland Rd. across from Stone Rd.



Loads of leaves **must** be covered during transport!

BAGGED LEAVES accepted at all sites on **Saturdays, May 7 and May 14, from 10 a.m. to 3 p.m.**

City staff will assist residents with unloading bags of leaves on Saturdays. Residents will be asked to take empty bags home for reuse or disposal. Loosely tie bags for easy emptying.

BULK LEAVES are only accepted at **Public Works, 11522 Minnetonka Blvd., on the following days and times:**

- **Saturdays, May 7, May 14, May 21:**
7 a.m. to 3 p.m.
- **Mondays, May 2, May 9, May 16:**
Noon to 8 p.m.
- **Tuesdays, May 3, May 10, May 17:**
Noon to 8 p.m.

Bulk leaf drop-off ends Saturday, May 21, 2005!

Residents will unbag and unload their own leaves onto the bulk pile. Bring proper equipment to unload your own leaves.

Hint: Try using many layers of tarps between a foot or two of leaves to make unloading your leaves easier and faster.

Information about composting and yard waste management is available from Dean Elstad, recycling coordinator, at (952) 939-8217.

2005 brush drop-off program

The 2005 brush drop-off site is open Mondays and Tuesdays from noon to 8 p.m. and Saturdays from 7 a.m. to 3 p.m. The brush drop-off site will be closed on the following holidays: Memorial Day (May 30), Independence Day (July 4), and Labor Day (Sept. 5). Brush drop-off will end Nov. 19, 2005.

Branches up to 10" in diameter will be accepted. A valid Minnesota photo I.D. showing Minnetonka residency is required to drop off brush.

Please note: trash, metal, concrete, lumber, fences, or wood scraps are not accepted. **Do not** bring these materials with your load of brush. Anyone caught dumping unacceptable materials will be prosecuted to the fullest extent of the law. **Do not** put grass, loose leaves, dirt, or sod in with the brush pile; these materials are only accepted with the leaf drop-off program.

No brush will be accepted from commercial tree or lawn services.

Please call Dean Elstad, recycling coordinator, at (952) 939-8217 during business hours or leave a message any time if you have questions or comments.

Memorial Day recycling collection delayed

The Memorial Day holiday on Monday, May 30, will delay the recycling collection one day. Residents west of I-494 will have recycling collection Tuesday, May 31. Residents east of I-494 will have collection Wednesday, June 1.



Natural Resource Notes



Storm water: a major cause of water pollution

ACCORDING TO THE ENVIRONMENTAL Protection Agency, storm water is one of the leading causes of water pollution. Storm water is any water that falls on an impervious or hard surface, drains into the storm drains located in the street, then ends up in the neighborhood lake, creek, or wetland. The water itself isn't the problem—it's the fertilizer, leaves, grass clippings, eroded soil, pet feces, cigarette butts, pop bottles, gum wrappers, oils and solvents that pollute and contaminate that water.



In order to protect water resources, dirt and debris from construction projects should not be tracked into the street in large quantities.

Nominate someone you know for a CAR award

MINNETONKA'S UNIQUE CHARACTER comes from the individuals, organizations and businesses that contribute so much to the community. To recognize and celebrate these contributions, the city of Minnetonka has created the Minnetonka Community Action Recognition Award program. This program is designed to recognize those one-time, short-term projects that enrich the quality of life in this community, show human connections, preserve natural resources, beautify the community, or exemplify good citizenship.

For a nomination form, visit www.eminnetonka.com (click on City Services, then Award Programs) or call Jacque Larson, community relations manager, at 952-939-8207. □

Cigarette butts, pop bottles, and other garbage are an eyesore and a nuisance. Bacteria and nutrients from pet feces, contaminants from solvents and oil, and high levels of nitrogen and phosphorus from fertilizer, lawn clippings, leaves, soil and other organic debris cause the direct degradation of water resources. Phosphorus is the key nutrient responsible for excess algae blooms and nuisance aquatic weed growth. Studies indicate that it only takes one pound of phosphorus to create nearly 300 pounds of algae—that's a lot of algae!

Algae blooms and nuisance aquatic weeds can destroy a lake, creek, or wetland by blocking sunlight for native plant species. As they decay, they use all of the available oxygen, resulting in fish kills. It's a nuisance for local residents, and it affects the animals that depend on these wetland environments.

Storm water is community water—it belongs to all of us. Just a few simple steps can protect water resources from the negative effects of storm water:

- Do not sweep dead grass, sand, and debris into the street.
- Sweep up any fertilizer, leaves, and grass clippings that land on the driveway and street. If you hire a lawn care company be sure they also are doing this. Use a zero-phosphorous fertilizer.
- Keep the soil from construction or landscape projects out of the street. Monitor gravel driveways and sweep up the resulting sediment from the street.
- If you live on a wetland or pond, don't mow to the edge—keep a natural buffer of native plants.
- Pick up any garbage or litter that may be in the street, and pick up after your pet.

Remember that every curb acts like a shoreline—whatever is in the street will be washed into the neighborhood lake, creek or wetland. Thank you for helping to protect our water resources. □

Pick up after your pooch!

OWNING A PET IS A PRIVILEGE AND A responsibility, and pet owners should be familiar with city regulations regarding pets. Here's a little refresher course on some of those rules.

Clean up after your pet

Every year, people call to complain about pet droppings left in city parks, on sidewalks and especially on the trails.

Picking up after your pet in public places as well as on another's private property is part of responsible pet ownership and required under City Code.

Always carry one or more plastic bags with you while walking your dog (turn a plastic bag inside out to scoop up the droppings). Place the bags in your trash. Mutt Mitt bags are provided along the trail system as well as trash receptacles—please use them!

Keep your pet under control

Along with warmer spring weather, the city receives many calls about dogs running at large. City ordinances require that dogs be under control, either by voice command or on a leash. Dogs are not permitted to run loose.

If you observe a stray dog on your property, call 9-1-1 and request that a community service officer be sent to pick up the animal. If the dog belongs to a neighbor, you are encouraged to contact that neighbor first and ask his or her cooperation in keeping the dog under control. It is to the owner's advantage to do this, since stray dogs may be impounded and owners are responsible for expenses incurred. Dogs running loose pose a threat to other animals, to people and to property.

If you exercise your pet on city trails, please be aware of the following rules:

- All dogs must be on a leash no longer than 6 feet in length.
- You are **required** to clean up after your pet. Bring your own plastic bag or use the Mutt Mitt bags provided. Litter receptacles are conveniently placed along the trails or use your own garbage.

Please keep in mind that dogs are personal property and you can be held liable for any damage or injuries they may cause. □

Minnetonka trails: a user's guide

MINNETONKA RESIDENTS ARE FORTUNATE TO HAVE MILES OF TRAILS TO ENJOY. Here are a few tips to keep the trails neat and ensure that everyone can enjoy using them!

Spring trail use

The onset of the spring season results in trails that are soft and muddy, with ruts in many areas. Be cautious when using the trails in this condition and watch for maintenance vehicles.

Trail Etiquette and Safety

Trails are shared by bicyclists, hikers, runners, walkers and dog walkers. Respect the rights of others to use the trails, and make it your responsibility to promote peaceful co-existence and safe trail use.

Remember these rules:

- Dogs must be on a close leash — no longer than 6'.
- Pick up and properly dispose of pet droppings. Dispensers with plastic bags are placed along the trail. Please use them or bring your own!
- Travel on the right. Single-file use is preferred.
- If you stop, move off the trail.
- Obey all traffic signs.
- Signal your turn and turn only when safe to do so.
- Stop at road crossings and look both ways for cars.
- Yield to slower trail users.
- Proceed at a reasonable speed — 15 mph maximum.
- Pass on the left and only when safe. Pass in single file only.
- When overtaking fellow trail users, warn them by sounding a bell, horn or whistle and saying "passing on your left" or "passing."
- Watch for children, strollers, dogs on leash, wildlife and other trail users.
- Proceed slowly around blind curves, down steep hills and over bridges.
- Watch for wet or slippery surfaces, sand, acorns, rocks or washouts.
- Travel in pairs if possible.

Trails close at 10 p.m. In an emergency, call 9-1-1. Have a comment, concern, or need a trails map? Call (952) 93-TRAIL (952-938-7245).



Shady Oak, Libbs Lake beach passes available

SEASON PASSES FOR SHADY OAK AND Libbs Lake beaches are sold only through the Recreation Services office at Minnetonka City Hall. Hours are Monday–Friday, 8 a.m.–4:30 p.m. Passes can be purchased over the phone or mailed in using Visa or MasterCard. While season passes will not be sold at the beach, daily admission (\$4/person) and parking permits (\$3) can be purchased at the gate.

Shady Oak Beach opens June 10. Hours from June 10 to July 31 are 10 a.m. to 9 p.m.; from Aug. 1 through 28 beach hours are 10 a.m. to 8 p.m. Shady Oak Beach offers two sand play areas, a water play area, sand volleyball court, concession stand, and restroom/changing areas for male, female and family use.

The newly renovated Libbs Lake Beach opens this summer! Libbs Lake Beach will have scheduled times with lifeguards on duty and also times when swimming will be allowed in an unsupervised setting. The beach opens June 10. Hours from June 10 to August 28 are 8 a.m. to 8 p.m., with lifeguards on duty daily between noon and 6 p.m. Admission is free, but a parking permit is required.

For more information, call (952) 939-8203, see page 19 of the summer Recreation Services brochure or visit www.eminnetonka.com. □



Shady Oak Beach is a great place to enjoy a hot summer day!

Get the latest on local road projects

THE SECOND OF MINNESOTA'S TWO SEASONS — ROAD CONSTRUCTION — IS UPON US, AND 2005 promises to challenge the patience of metro area drivers. Minnetonka will be the site of several major road projects this summer, not the least of which is the continuation of the I-494 reconstruction between Hwy. 5 and I-394.

Keep up on all the latest news by signing up for Hot Topics, the city of Minnetonka's weekly e-newsletter. This electronic publication, delivered to your email address each Friday, will keep you in touch with the current events in the city, from recreation offerings to city council meetings to road projects to recycling news. It's easy to sign up — visit www.eminnetonka.com and click on "Sign up for our e-newsletter." □

June Memo:

THE NEXT MINNETONKA MEMO will be sent in mid-June. It will contain up-to-the-minute information about the Minnetonka Summer Festival and Burwell Old-Fashioned Ice Cream Social to be held Saturday, June 25.

Second phase of Southwest LRT study begins

THE SECOND PHASE IN THE SOUTHWEST LRT STUDY, THE ALTERNATIVES ANALYSIS, BEGAN in March. The purpose of the Alternatives Analysis is to identify and compare the benefits, costs, and impacts of transit alternatives for the Southwest Corridor, identified in the first phase of study, in order to determine a preferred alignment.

Sponsored by Hennepin County, this second study is expected to last 18 to 21 months and will expand upon the work completed in the first study. The public will be informed of what is happening throughout the study and will also be asked to participate. The first series of open houses are set for May:

- Tuesday, May 10, from 4–7 p.m. at the Southwest Metro Transit Station in Eden Prairie
- Wednesday, May 11, from 5–8 p.m. at The Depot in Hopkins
- Thursday, May 12, from 6–8 p.m. at the Kenwood Community Center in Minneapolis

To learn more about the study or the open houses, visit www.hennepin.us or call (612) 348-9260. □

Citizenship Academy graduates recognized

AT ITS APRIL 11 MEETING, THE Minnetonka City Council recognized 22 graduates of the 2005 Citizenship Academy. Participants spent four Wednesday evenings in March learning about different areas of the city, including administration, development, recreation, public works and public safety. Individuals who graduated included Paul Ansolabehere, Kristin Carlander, David Coudray, Sonja Dalbey, Larry Davis, Douglas Dennett, Kay Fredensborg, Frank Frieden, David Hakensen, Lois King, Marty Lederman, Celinda Miller, Sandi Nash, John Riley, Jan Russell, Chuck Schons, Betty Smithberg, Kent Stoa, Kristi Stoa, Mark Thompson, Robert Walker and Gerry Zielinski. □



This year's Citizenship Academy graduates were recognized at the April 11 city council meeting.

Help solve these arson cases

MORE THAN \$1 MILLION DOLLARS. That's the amount of money the city of Minnetonka has sustained in losses from two arson fires in the past six years. While the majority of the damages were covered by insurance, taxpayers still pay a price in higher premiums and the staff time required to repair and replace damaged property.

On Dec. 10, 1999, the just-renovated Burwell House caught fire in what was later determined to be arson. While several people were questioned in relation to the fire, no suspects were identified and the case remains unsolved.

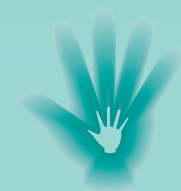
This past summer, on July 21, 2004, newly installed play equipment at Meadow Park was set on fire. No suspect descriptions were available in this case, and it remains unsolved as well.

If you have information about either of these cases, please call the Minnetonka Police Department at (952) 939-8500 or call the Confidential Crime Line at (952) 935-8000. A reward is available for information that leads to an arrest and conviction of those involved. □



Meadow Park sustained damage in an arson fire last summer.

Volunteer Corner



Get involved — volunteer!

WOULD YOU LIKE TO BE MORE involved with your city? Then participate in the city of Minnetonka's new volunteer effort, a recently launched program enabling residents to share their skills and time working with staff on specific projects. You become more familiar with city programs, services, and issues, while the city benefits as well, stretching tax dollars and establishing partnerships between citizens and staff.

Volunteers can range from teens to older adults, individuals to groups. Positions to be filled might be one-time special event activities, a short-term project, or ongoing opportunities. The volunteer positions presently available are listed below. For additional information, please visit the city web site, www.eminnetonka.com, Volunteer Opportunities, or call Joan Post, volunteer coordinator, at (952) 939-8215.

Volunteer positions currently available include:

- Burwell House tour guide
- Grounds maintenance (Williston Center, Community Center)
- Hilloway Park restoration
- History event staff
- Juvenile diversion program leader
- Maintenance (Williston Center)
- Minnetonka Mike mascot
- Oral history interviewers/transcribers
- Police records assistant
- Storm drain monitor
- Summer Festival
- Utility billing assistant
- Wetland health evaluation program participant (*please note, this position requires 40 to 50 hours total between May and July, not per week as reported in the April Minnetonka Memo.*)

Calendar

City of
Minnetonka

May 2005

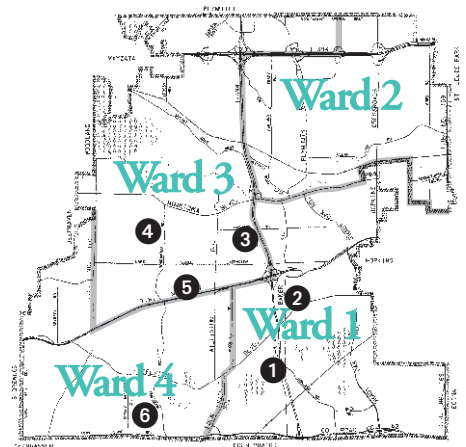
Call (952) 939-8200
for more
information.

S	M	T	W	T	F	S	
1	2	3	4	5	6	7	4 Community Heritage Commission, 6:30 p.m.
8	9	10	11	12	13	14	5 Police Advisory Commission, 5:30 p.m.
15	16	17	18	19	20	21	9 City Council, 6:30 p.m.
22	23	24	25	26	27	28	10 Senior Advisory Board, 10 a.m.; Economic Development Authority, 6 p.m.
29	30	31					12 Planning Commission, 6:30 p.m. 23 City Council, 6:30 p.m. 30 Memorial Day, city offices closed

NEW DEVELOPMENTS

The following items are tentatively scheduled to come before the Planning Commission in May. Please call (952) 939-8200 for updated information or visit the city Web site at www.eminnetonka.com. Meeting agendas are posted on the site the Friday prior to each commission meeting.

- 1 Preliminary plat to divide the existing property at 5516 Glenavon Avenue into four lots.
- 2 Front-yard setback variance for a garage at 13101 Greenwood Road.
- 3 Preliminary plat, with variances, for a two-lot subdivision at 3848 Haven Road. (04076.04a)
- 4 100-year old storm elevation setback variance for additions to the home at 16190 Rindahl Court. (05006.05a)
- 5 Side-yard setback variance for an addition to the existing building at 15012 Hwy. 7.
- 6 Site and building plan review for Park Renewal improvements to Boulder Creek Park at 5924 Stoneybrook Drive for the city of Minnetonka.



Remembering John C. "Jack" Bailey

JOHN C. "JACK" BAILEY PASSED AWAY MARCH 30, 2005, IN SUN CITY WEST, ARIZ., AT THE age of 75. He was mayor of Minnetonka from 1974 to 1977.

Jack, a native of Iowa, had made his home in Arizona since 1997. He is survived by his wife of 54 years, Shirley, as well as a daughter, son-in-law, grandchildren and other relatives.

HT Hot Topics HT

ITEMS IDENTIFIED WITH HT are listed as Hot Topics on the city Web site, www.eminnetonka.com. Please refer to the site for additional information on these selected topics. For more information, call Minnetonka Mike, (952) 939-8586, leaving your name and address.

minnetonka memo

May 2005



PRESORTED
STANDARD
U.S. POSTAGE
PAID
CITY OF MINNETONKA

A publication of the city of Minnetonka
14600 Minnetonka Boulevard, Minnetonka, MN 55345 • (952) 939-8200
8 a.m. to 4:30 p.m. Monday – Friday

Mayor

Karen J. Anderson (952) 939-8389
Home: (952) 938-2808
kanderson@eminnetonka.com
Meetings with the mayor may be scheduled
by calling the mayor's office, (952) 939-8389.

City Manager

John Gunyou (952) 939-8200

Newsletter Editor

Jacque Larson (952) 939-8200

E-mail: comments@eminnetonka.com

Internet: www.eminnetonka.com

Council

At Large: Janis Callison . . (952) 935-7010 jcallison@eminnetonka.com
Terry Schneider (952) 934-9529 tschneider@eminnetonka.com
Ward 1: Bob Ellingson . . (952) 931-3065 bellingson@eminnetonka.com
Ward 2: Tony Wagner . . . (952) 512-1817 twagner@eminnetonka.com
Ward 3: Brad Wiersum . . (952) 930-3681 bwiersum@eminnetonka.com
Ward 4: Al Thomas (952) 949-9027 athomas@eminnetonka.com

Minnetonka Mike (952) 939-8586 mike@eminnetonka.com

POLICE-FIRE: Emergency 9-1-1

Non-emergency (952) 939-8500 or 9-1-1

ECRWSS
POSTAL PATRON