



minnetonka memo

A newsletter from the city of Minnetonka
September 2005

Primary election set for Tuesday, Sept. 13

THE MUNICIPAL PRIMARY ELECTION is set for Tuesday, Sept. 13. The ballot will include only the offices of Council at Large, Seat A and Council at Large, Seat B. Because these positions represent all of Minnetonka, the primary election will be citywide. The mayoral race will not be on the primary ballot because only two candidates filed for that office.

Below are answers to the questions most frequently asked by voters. For more specific or current information about these topics, call Minnetonka City Hall at (952) 939-8200 or visit the city's Web site at www.eminnetonka.com (click on "Elections 2005").

What's the purpose of the primary election?

The primary election determines the two candidates for each position who will advance to the Tuesday, Nov. 8, general election.

What are the hours to vote, and where do I vote?

Polling places will open at 7 a.m. Tuesday, Sept. 13, and remain open until 8 p.m. If you are in line at 8 p.m., you will be allowed to vote.

A map is provided to the right to give you a general idea of your polling place. To find your specific polling location, visit www.eminnetonka.com and click on "Election 2005." Then click on "Precinct Finder."

Voters may only vote in person at their assigned polling place. Be sure to know your correct polling place — it will save you time.

Election continued on page 2

Minnetonka Wards and Precincts

Ward Boundary

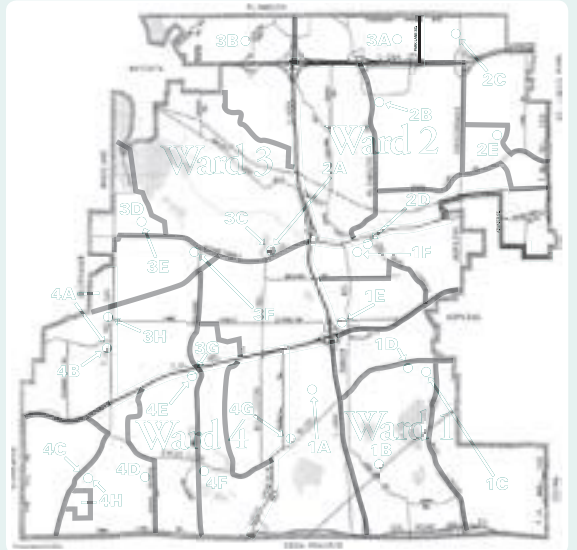
Precinct Numbers 4A

Precinct Lines

Polling Locations •

Polling Locations

- | | | |
|--|---|---|
| 1A Glen Lake Elementary School
4801 Woodridge Road | 3D/ St. Luke Presbyterian Church
3121 Groveland School Road | 4D Scenic Heights Elementary School
5650 Scenic Heights Drive |
| 1B Old Apostolic Lutheran Church
5617 Rowland Road | 3E Minnetonka Lutheran Church
16023 Minnetonka Boulevard | 4E Redeemer Bible Church
16031 Woodland Curve |
| 1C Cross of Glory Baptist Church
4600 Shady Oak Road | 3F Redeemer Bible Church
16031 Woodland Curve | 4F All Saints Lutheran Church
15915 Excelsior Boulevard |
| 1D Faith Presbyterian Church
12007 Excelsior Boulevard | 3G Minnetonka United Methodist Church
17611 Lake Street Extension | 4G Glen Lake Activity Center
14350 Excelsior Boulevard |
| 1E St. Paul's Lutheran Church
13207 Lake Street Extension | 3H Ridgewood Church (formerly Minnetonka Baptist)
4420 County Road 101 | 4H Clear Springs Elementary School
5701 County Road North101 |
| 1F Minnetonka Community Church
13215 Minnetonka Drive | 4A/ Ridgewood Church (formerly Minnetonka Baptist)
4420 County Road 101 | |
| 2A Minnetonka Community Center
14600 Minnetonka Boulevard | 4B Clear Springs Elementary School
5701 County Road 101 | |
| 2B Ridgedale Hennepin County Library
12601 Ridgedale Drive | | |
| 2C Oak Knoll Lutheran Church
600 Hopkins Crossroad | | |
| 2D The Episcopal Parish of St. David's Church
13000 St. David's Road | | |
| 2E Lindbergh Center
2400 Lindbergh Drive | | |
| 3A Ridgpointe
12600 Marion Lane W. | | |
| 3B Epoch Assisted Living
500 Carlson Parkway | | |
| 3C Minnetonka Community Center
14600 Minnetonka Boulevard | | |



Is traffic getting you down?

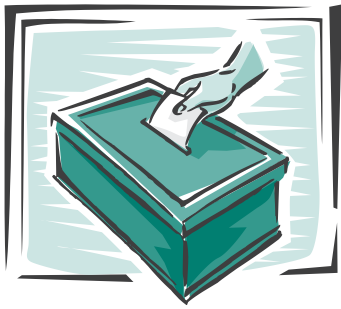
IF YOU'RE TIRED OF TRAFFIC JAMS AND soaring gas prices, check out 494 Commuter Services at www.494corridor.org. Use the Commute Planner to develop a personalized bus itinerary; order a free Hennepin County bike map; or find others to form a car or van pool. With a regional database of thousands at their fingertips, 494 Commuter Services is confident you can be matched with someone who has a similar commute.

Minnetonka employers might also consider partnering with 494 Commuter Services to educate employees about alternatives to driving solo. Information tables at health or benefit fairs, displays or Web site links are all great ways to get the word out to employees.

The 494 Commuter Services program is sponsored by the cities of Minnetonka, Bloomington, Eden Prairie, Edina, Plymouth and Richfield. For more information call (952) 848-4947. ☺

Inside...

- What ID do you need to vote? *page 2*
- National Night Out *page 3*
- Williston Fitness Center *page 3*
- Special one-day drop-off *page 4*
- Ask Minnetonka Mike *page 6*
- Garlic mustard control *page 7*
- Volunteer Corner *page 7*
- Fall skating lessons offered *page 8*



Election continued from page 1

Who can vote absentee?

Absentee voting is available if you cannot get to the polling place on Election Day due to absence from the precinct; illness or disability; religious observance; or service as an election judge in another precinct.

How do I vote absentee?

Two options are available for voting absentee:

- **In person:** Minnetonka voters may vote absentee at Minnetonka City Hall during regular business hours, 8 a.m. to 4:30 p.m. Extended absentee voting hours will also be available on Saturday, Sept. 10, from 10 a.m. to 3 p.m. and on Monday, Sept. 12, until 5 p.m.
- **By mail:** Absentee voting also may be done by mail. Remember, the voted ballot must be received at city hall by Election Day for the vote to count. Please allow sufficient time for postal service delivery.

Can I register to vote on Election Day?

Minnesota allows voters to register to vote at the polls on Election Day. You will need to register if you have never registered to vote; if you have changed your name or address (including just moving to another apartment in the same building) since you last voted; or if you have not voted in four years.

What identification is needed to register?

Minnesota state law requires specific forms of identification to register at the polling place. For information about these forms, see Table A.

Where will election results be available?

Results will be available on Cable Channel 16, and on the city's Web site.

What is the city's role in the election?

The city plays a key role in the election process. City staff recruits and trains elections judges; provides polling place supplies; answers questions; and ensures voter results are tabulated. This process works smoothly because Minnetonka has excellent and dedicated election judges—we salute them!

Contact city hall at (952) 939-8200 if you need assistance. ☺

What ID do you need to vote?

Voters registering to vote on Election Day must provide proof of residence. You may show **one item from Table A or **two** items from Table B (valid photo ID plus valid utility bill)**

On Election Day show one of the following items:

TABLE A

- Valid Minnesota driver's license or learner's permit (or receipt for either) showing current name and address in the precinct.
- Valid Minnesota identification card (or receipt) showing current name and address in the precinct.
- Voucher—oath of voter registered in the precinct who can verify the registrant's address in the precinct.
- A voucher card must be signed by the person vouching for the voter and by an election judge.
 - The voucher card must be placed with the registration card.
 - A voter who is vouched for **cannot** vouch for another voter at this election.
 - Challengers **cannot** serve as vouchers.
 - A voucher may vouch for an unlimited number of persons.
 - Voucher **must** leave the polling place as soon as the vouching process is complete.
- Late notice sent from the Elections Office. Place this notice with the registration application.
- Prior registration in the same precinct—voter's former address listed in the polling place roster.
- Current students
 - Student ID or dated registration or fee statement with valid address in the precinct; or student ID if on a dorm list provided by Election Headquarters.

OR

On Election Day voters may register by a combination of one picture ID from **Column 1 along with one type of utility bill from **Column 2**.**

TABLE B

Column 1

Approved photo IDs must contain voter's name and photo. It may contain voter's old address or have no address.

- MN driver's license
- MN state ID
- U.S. passport
- U.S. military ID
- Student ID from MN post-secondary school

Column 2

Approved utility bills must contain name, current address in the precinct, and date due within 30 days before/after Election Day.

- Cable TV
- Electric
- Gas
- Phone
- Garbage
- Water/sewer

National Night Out a success!

MORE THAN 90 MINNETONKA neighborhoods participated in this year's National Night Out event, hosting a variety of events from dunk tanks to cotton candy to potlucks to simple get-togethers with neighbors. Representatives of the Minnetonka Fire Department, Police Department, Public Works Department or Recreation Services visited each party. Thank you to everyone who helped organize their neighborhood's event, and to everyone who participated! ☺



Consider joining the Williston Fitness Center

COME AND EXPERIENCE WILLISTON FITNESS CENTER, THE CITY OF Minnetonka's fitness facility. Sign up today for a three-month or an annual membership — with no initiation fees or start-up costs!

Membership includes access to five indoor tennis courts; a basketball court; four baseball/softball batting cages; a 25-yard swimming pool; land and water aerobic classes; weight machines; cardio equipment; free weights; whirlpool; sauna; and much more.

If you need a baseball lesson, the Williston baseball program provides 30- and 60 minute private and group lessons. Call (952) 939-8378 for more information.

For membership information, call (952) 939-8370 or stop by the Williston Fitness Center, located at 14509 Minnetonka Drive, Minnetonka. ☺

Annual Membership Rates

(Pay in full; or 50% down and 50% in three months)

Membership Type	Annual Resident Rate	Annual Non-Resident Rate
Adult (22 years +)	\$364	\$456
Dual	\$506	\$632
Family	\$584	\$726
Senior (60 years +)	\$254	\$320
Senior Dual	\$364	\$456
Student (15-21)	\$292	\$364

Three-Month Membership Rates

(Must be paid in full)

Membership Type	3-Month Resident Rate	3-Month Non-Resident Rate
Adult (22 years +)	\$132	\$172
Dual	\$182	\$232
Family	\$204	\$260
Senior (60 years +)	\$100	\$120
Senior Dual	\$132	\$172
Student (15-21)	\$110	\$138

Water safety instructors, aides needed

IF YOU LIKE WATER AND KIDS, ARE AT LEAST 16 YEARS OLD, AND WANT A fun job during the school year, then come teach swimming lessons at the Williston Fitness Center!

Water safety instructors (WSIs) must have current certification. Pay starts at \$9.50 per hour. Training is provided to become a water safety instructor aide (WSIA), with \$7.75 per hour starting pay.

For an application or more information call Sara Woeste, program manager, at (952) 939-8372. ☺



2005 MINNETONKA RECYCLING UPDATE

Special one-day drop off



Saturday, September 10
8 a.m. – 3 p.m.

Please note new location:

Minnetonka Public Works, 11522 Minnetonka Blvd

Enter using east driveway by the recycling drop-off center.



Minnetonka residents may drop off the materials listed below. The charge for dropping off each item, if any, is listed in parentheses.

- **Air conditioner or water softener (\$20)**

Washer, dryer, dishwasher, stove, oven, cooktop, microwave, freezer, refrigerator, water heater, home furnace, trash compactor, garbage disposer, humidifier, dehumidifier

- **Batteries (No charge)**

All car, truck, motorcycle, ATV, snowmobile and garden tractor batteries are accepted, as well as household batteries (D, C, AA, AAA, 6- and 9-volt cells, button batteries, and rechargeable batteries).

- **Carpet & padding (\$1 per square yard for each)** Determine the number of square yards of carpet or the size of the room from which the carpet and/or padding came. Roll carpet and tape or tie rolls. Rolls of carpet must not exceed six feet in length or 12 inches in diameter.

- **Copier or fax machine (\$35)**

TV, VCR, radio, stereo console, computer, printer, monitor

- **Fluorescent bulbs (No charge)**

Up to ten fluorescent bulbs will be accepted per vehicle. No bulbs will be accepted from business or commercial use. Please transport bulbs in a manner to avoid breaking.

- **Furniture**

Chairs (**small, \$5; large, \$10**); loveseat (**\$15**); couch/sofa (**\$20**); hide-a-bed (**\$30**); sectionals, dressers, chests, tables and other furniture (**\$5 and up, depending on size**)

- **Lumber (\$2 minimum, based on \$25 per cubic yard)** No railroad ties. No concrete.

- **Mattresses and box springs (single or twin size, \$8 per piece; double, queen, or king, \$12 per piece)**

- **Propane tanks (small, \$1; anything larger than a two-pound tank, \$6)**

- **Scrap metal**

- **No charge for clean scrap metal**

(meaning all plastic, rubber, wood, concrete and hazardous materials must be removed) such as pipe, gutters, swing sets, barbecues, ductwork, fencing, etc.

- **Dirty scrap metal (\$5):**

Bikes with tires, lawn chair with webbing, barbecues and lawn mowers with wheels and/or non-metal parts still attached. All engines must be drained of gas and oil. Additional charges apply for riding mowers, garden tractors, snow blowers and other large items.

- **Tires (car, trailer, or light truck, \$3; tire on rim, \$5; tractor or truck tire on split rim, \$20)**

- **Toilets and non-metal sinks (\$5 each)**

Payment will be accepted in cash or local checks payable to the city of Minnetonka.

NO GARBAGE OR HOUSEHOLD HAZARDOUS WASTE WILL BE ACCEPTED.

Please note: There will **not** be a charitable organization at the Special Drop-off accepting clothing and household goods.

Local charitable organizations accepting clothing and household goods include the following:

- **Bethesda Thrift Shop**

913 Mainstreet, Hopkins
(952) 939-0988

- **Goodwill Industries**

1025 Hill Street, Hopkins
(952) 935-2760

- **ARC Hennepin-Carver**

Pickup route information
(612) 866-8820

- **Value Village Thrift Store**

2751 Winnetka Ave, New Hope
(763) 544-0006

- **Vietnam Vets**

Pickup route information
(651) 778-8387

For more information about the Special Drop Off event, call Dean Elstad, recycling coordinator, at (952) 939-8217 during business hours or visit www.eminnetonka.com, "Hot Topics." ♻️

Labor Day delays recycling collection; brush drop closed

The Labor Day holiday on Monday, Sept. 5, will delay recycling collection by one day. Residents west of I-494 will have collection on Tuesday, Sept. 6; residents east of I-494 will have collection on Wednesday, Sept. 7.

The brush drop-off site also will be closed Monday, Sept. 5, for the Labor Day holiday. ♻️

2005 MINNETONKA RECYCLING UPDATE

Disposing of household hazardous waste

Residents may bring household hazardous waste (HHW) to either of Hennepin County's permanent HHW drop-off facilities throughout the year:

1400 W. 96th St., Bloomington

8100 Jefferson Hwy., Brooklyn Park*

*** Please note:** The Brooklyn Park facility is under construction through Dec. 2006. Call (612) 348-3777 or visit www.hennepin.us (search for "temporary HHW site") for information on delays and closures before traveling to this facility.

Facilities are open Tuesday, Thursdays and Fridays from 10 a.m. to 6 p.m.; Wednesdays from 10 a.m. to 8 p.m.; and Saturdays 8 a.m. to 5 p.m. Closed Sundays, Mondays, Independence Day, Thanksgiving, Christmas and New Year's Day.

Household hazardous waste includes such items as paint; stain; thinners; solvents; pesticides; herbicides; cleaners; gasoline; oil filters; aerosol cans; fluorescent and high intensity discharge (HID) bulbs; thermostats, switches and thermometers containing mercury; and rechargeable appliances and batteries.

While the permanent Brooklyn Park facility is under construction, residents may bring

household hazardous waste items to a temporary facility at 7000 63rd Avenue North in Brooklyn Park. (See list above for acceptable items. No motor oil, appliances or consumer electronics accepted at the temporary site.)

Also accepted at the two original sites for no charge are consumer electronics, including TVs, radios, stereos, VCRs, camcorders, telephones, computers, monitors and printers. Household appliances may be dropped off for a \$15 fee.

For more information call Dean Elstad, Minnetonka recycling coordinator, at (952) 939-8217 or Hennepin County at (612) 348-3777 (8 a.m. to 4:30 p.m., Monday through Friday).

Hennepin County Problem Material and HHW Drop-Off

Bloomington
1400 W. 96th St.

Hennepin County Transfer Station and HHW Drop-Off

Brooklyn Park
8100 Jefferson Hwy.

Under construction through Dec. 2006. Call (612) 348-3777 for delays and closures or go to www.hennepin.us and search for Brooklyn Park facility.

Autumn is here — it's time to plant a tree!

MOST PEOPLE ASSOCIATE TREE PLANTING with spring, but tree root growth actually peaks in the spring and the fall, so autumn is a great time to plant a tree!

A tree's long-term health depends on good root formation, so here are a few tree biology facts that are important to know:

- Due to reduced rainfall, roots don't grow much during the summer.
- Root growth increases throughout the fall, until soil temperatures fall below 45 degrees F.
- While air temperatures decrease in the fall, it is usually okay to plant trees until mid-October, because the soil has had all summer to heat up.
- Don't fertilize trees in the fall, because it may trick the tree into thinking it should produce new, soft shoots that can't withstand frost, and will prevent the tree from preparing itself for winter.



Another reason to plant in the fall: trees are usually discounted at this time because stores don't want to pay for or worry about caring for the trees over winter.

Nurseries usually have three types of tree planting stock to choose from: container; balled and burlap; and bare root. Of these three types, avoid planting bare root trees — these should be planted only in early spring. Also be sure to buy healthy trees with no cankers or wounds on the stem; a good branching structure; roots present within the first four inches of soil; and no roots that circle around the stem.

After planting, it is important to mulch the area around the tree and continue to water until the ground freezes.

For more information on tree care and planting, check out these Web sites: University of Minnesota Forest Resources Extension at www.cnr.umn.edu/FR/extension/ or the International Society of Arboriculture at www.treesaregood.com.

Brush drop-off site open through Nov. 19

The brush drop-off site is available at Minnetonka Public Works, 11522 Minnetonka Boulevard, on Mondays and Tuesdays from noon to 8 p.m. and Saturdays from 7 a.m. to 3 p.m. through Nov. 19. Branches up to 12 inches in diameter will be accepted.

Those dropping off brush must provide proof of Minnetonka residency (driver's license or utility bill). Please enter the site using the west entrance by the Big Willow Park ball fields.

Please note: trash, metal, concrete, lumber, fences or wood scraps are not accepted — find the proper disposal option for these materials (see information in this issue on the Special One-Day Drop Off event). Do not bring these materials with your load of brush. Anyone caught dumping unacceptable materials will be prosecuted to the fullest extent of the law. Also, do not put grass, loose leaves, dirt or sod in the brush pile.

No brush will be accepted from commercial tree or lawn services.

For more information call Dean Elstad, recycling coordinator, at (952) 939-8217.

\$250 service fee charged for automatic fire alarms

IF YOUR HOME OR BUSINESS IS MONITORED by a private alarm monitoring company, and they initiate an automatic fire alarm to the Minnetonka Fire Department, be prepared to pay the city a \$250 service fee.

“Our fire department has a general duty to respond to emergencies that occur within the city,” said Minnetonka Fire Department Chief Joe Wallin. “Fire alarm systems with central station service are a contract between a private party and a vendor, resulting in a service being performed by an uncompensated third party—the Minnetonka Fire Department. This level of service constitutes ‘special duty,’ which is not available to everyone unless they contract with a private alarm company.

“Because the Minnetonka Fire Department is primarily a paid-on-call department, there are definite costs associated with each call for service, in contrast to a full-time department which has a fixed payroll cost whether responding to calls or not,” concluded Chief Wallin.

The \$250 fee reflects the average additional cost incurred for each response to a fire alarm. In the event that the fire alarm system is the first notification of a true fire emergency, the fire chief may waive the service fee.

This fee does not apply to general 9-1-1 calls, alarm calls where the first notification of the alarm is a 9-1-1 call from the affected property, or alarm calls originated by an automatic fire sprinkler system. For more information call Deputy Chief Bob Eastham, Minnetonka Fire Department, at (952) 939-8311 or e-mail beastham@eminnetonka.com.

Get the inside scoop on city news

WOULD YOU LIKE A WEEKLY EMAIL update on what’s happening in Minnetonka, including information on road construction projects, city council meetings, crime alerts and recreation offerings? Then subscribe to *Hot Topics*, the city’s free electronic newsletter that is sent out each Friday. It’s easy to sign up—visit www.eminnetonka.com and click on “Sign up for our e-newsletter.” For more information call (952) 939-8207 or email jl Larson@eminnetonka.com.

Parks to receive fertilizer and herbicide treatment this fall

THE CITY OF MINNETONKA DOES NOT APPLY HERBICIDES ANNUALLY AT PARKS FOR THE control of broadleaf weeds. Instead, parks are treated with herbicide on a rotating basis, along with a fall fertilizer application.

In addition to these treatments, the city uses cultural methods such as top dressing (adding black dirt to the soil surface); over seeding (adding grass seed to existing turf); and aeration to improve turf quality.

The following parks will receive a fall fertilizer and herbicide application this year: Glen Lake, Gro-Tonka, Guillian, Linner, Lone Lake, Lake Rose, Oberlin, Orchard, Libbs Lake Beach, Reich, Mills and Mini-Tonka.

Ask Minnetonka Mike!

MINNETONKA MIKE, THE CITY OF Minnetonka’s online request system, is always standing by to help you with any questions, comments or concerns you have about your city. He asked for some space in this month’s *Minnetonka Memo* to share some of the questions he’s received, as well as the answers, that might be of interest to other residents.



Community Land

Dear Mike:

A neighboring city recently made the news for prosecuting a resident who allegedly cut down a number of trees on public property in order to improve his view of a lake. What is Minnetonka’s policy on this sort of thing?

Signed, Aspiring Lumberjack

Dear Aspiring Lumberjack:

Minnetonka has a strong open space program that is valued by our residents. Certain open space is “community land”—owned by the city and available for the enjoyment of all, but not for individual benefit. The city is the steward of community land.

We have had cases where owners with properties next to community land have placed sheds on that land or initiated their own “beautification project” by landscaping or mowing community land. Sometimes this land is used as a dump for leaves, grass clippings, or brush.

When we learn about this, we contact the responsible person and have them remove any encroachments, and replace any trees that have been removed.

We understand that people generally mean well, but our residents have varied interpretations of beauty— to some, manicured is the only way to go, while others prefer a natural look. Our goal is to keep the natural areas natural.

If you are aware of an open space in your neighborhood that is being used in a way that is not in keeping with its natural state, let us know. The city allows stewardship projects when residents work with the city. You can contact Kathy Magrew about community lands at (952) 939-8218 or kmagrew@eminnetonka.com, or through Minnetonka Mike’s 24-hour online request service at eminnetonka.com.

Let Minnetonka Mike know if you have a question, comment or concern about the city of Minnetonka! It’s easy to set up an account. Just visit www.eminnetonka.com and click on “Minnetonka Mike Online Service Request System.” Follow the directions to set up your account, then go ahead and submit your comment.

Garlic mustard control to be tested at Hilloway Park

NON-NATIVE SPECIES, SUCH AS EURASIAN milfoil, buckthorn and garlic mustard, are one of the main threats to ecosystems and to the diversity of native species.

Garlic mustard, which has spread to 34 states since its introduction to the United States in 1868, is of concern because of its ability to invade high-quality forests, form dense populations, and decrease the abundance of native species such as spring wildflowers. Traditional methods of plant control, such as herbicide, fire, and pulling have failed to provide long-term control of garlic mustard.

In 1998, research began to identify potential biological controls — involving the release of organisms that feed only on the non-native species — for garlic mustard. Biological control insects provide control of the problem plant and reduce the need for herbicide and other control methods.

Researchers at the University of Minnesota have been studying three weevil species in a quarantine facility to determine that the insects will not develop on species besides garlic mustard. These insects may be approved for release in the next two years by the U.S. Department of Agriculture. This may provide an important new tool for management of garlic mustard.

In order to understand if the insects are effective at controlling garlic mustard, research plots are being established throughout Minnesota, where the abundance of garlic mustard and the incidence of insect feeding will be monitored. It is anticipated that once the insects are released the garlic mustard plants will sustain more damage and produce less seed, thus producing fewer garlic mustard plants. It is important to have baseline information before the insects are released, so this year the Minnesota Department of

Natural Resources and the University of Minnesota have been working to set up monitoring sites.

The city of Minnetonka has agreed to allow monitoring sites in Hilloway Park, which has an existing population of garlic mustard, for the duration of the multi-year project. Additional monitoring sites have been established at five other parks in the metro area, including Fort Snelling and Nerstrand state parks; Warner Nature Center (Marine on St. Croix); Pine Bend Bluffs Scientific and Natural Area (Inver Grove Heights); and Baker Park Reserve (Three Rivers Park District).

Plots are marked with wooden stakes and will be monitored for many years, providing important

information about garlic mustard control. You can help by leaving the sites undisturbed if you happen upon them. If you have any questions, please call Craig Sinclair, Minnetonka Public Works, at (952) 988-8412. ☺



Garlic mustard, a non-native species introduced to the United States in 1868.

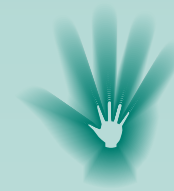
Photo by J. Rendell; Courtesy CABI BioScience Centre, Switzerland



One of the weevils being researched as a biological control for garlic mustard.

Photo by H. Hinz & E. Gerber; Courtesy MN Dept. of Natural Resources

Volunteer Corner



Get involved!

IF YOU'D LIKE TO BECOME MORE involved with local government, then consider participating in the city of Minnetonka's volunteer effort, a program enabling residents to share their skills and time working with staff on specific projects. You'll become more familiar with city programs, services, and issues, while the city benefits as well, stretching tax dollars and establishing partnerships between citizens and staff.

Volunteers can range from teens to older adults, individuals to groups. Positions to be filled might be one-time special event activities, a short-term project, or ongoing opportunities.

Current volunteer positions include:

- Hilloway Park restoration
- History event staff
- Juvenile Diversion Program leader
- Maintenance of equipment and grounds at Williston Center
- Minnetonka Mike mascot
- Oral history interviewers/transcribers
- Soccer coaches
- Storm drain monitor

For more information or for an application, please visit www.eminnetonka.com and click on "Volunteer Opportunities," or call Joan Post, volunteer coordinator, at (952) 939-8215. ☺

Calendar

City of
Minnetonka

September
2005

Call (952) 939-8200
for more
information.

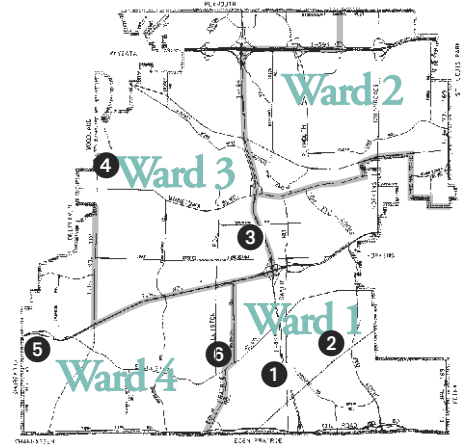
S	M	T	W	T	F	S
				1	2	3
4	5	6	7	8	9	10
11	12	13	14	15	16	17
18	19	20	21	22	23	24
25	26	27	28	29	30	

5 Labor Day, <i>city offices closed</i>	13 Primary Election, polls open 7 a.m.–8 p.m.; Senior Advisory Board, 10 a.m.
7 Park Board, 7 p.m.	14 Joint Recreation Board, 6 p.m.
8 Planning Commission, 6:30 p.m.	20 Economic Development Authority, 6 p.m.
10 Special One-Day Drop Off, 10 a.m.–3 p.m.	22 Planning Commission, 6:30 p.m.
12 City Council, 6:30 p.m.	26 City Council, 6:30 p.m.

NEW DEVELOPMENTS

The following items are tentatively scheduled to come before the Planning Commission in September. Please call (952) 939-8200 for updated information or visit the city Web site at www.eminnetonka.com. Meeting agendas are posted on the site the Friday prior to each commission meeting.

- 1 Preliminary plat to divide into four lots at **5516 Glenavon Avenue**.
- 2 Preliminary plat for a two-lot subdivision, with a front yard setback variance, at **4848 Valley Road**. (89047.05a)
- 3 Preliminary plat with variances for a three-lot subdivision at **13800 Spring Lake Road**. (05001.05a)
- 4 Multiple variances to rebuild a home at **2813 McKenzie Point Road**. (05027.05a)
- 5 Preliminary plat to divide existing lot into two lots at **5243 Black Friars Lane**.
- 6 Conditional use permit and site plan review for a building addition, including restaurant, at **14400 Excelsior Boulevard**.



Fall skating lessons offered

LOOKING FOR SOMETHING TO DO THIS FALL? SIGN UP FOR SKATING LESSONS WITH THE MINNETONKA ICE ARENA'S ALL-SEASON SKATING SCHOOL! Endorsed by the Ice Skating Institute, this lesson program offers instruction for beginner and advanced skaters, for both adults and children age 3 and up. Classes are held Tuesdays, Wednesdays, or Saturdays, depending on the skater's age and class level. Take advantage of the Tuesday daytime tot program; hockey skating skills and power classes on Saturday mornings; Wednesday night adults-only classes; and much, much more!

Call the Minnetonka Ice Arena at (952) 939-8310 for class information, fees, and a lesson brochure. A registration form can also be downloaded at www.eminnetonka.com (click on City Services, then Facilities, then Ice Arena). The 12-week fall session begins September 13, 2005, with registrations being accepted until 4 p.m. on September 12, or until classes are full. ☺

minnetonka
memo *September 2005*



PRESORTED
STANDARD
U.S. POSTAGE
PAID
CITY OF MINNETONKA

A publication of the city of Minnetonka
14600 Minnetonka Boulevard, Minnetonka, MN 55345 • (952) 939-8200
8 a.m. to 4:30 p.m. Monday – Friday

Mayor

Karen J. Anderson (952) 939-8389
Home: (952) 938-2808
kanderson@eminnetonka.com
Meetings with the mayor may be scheduled
by calling the mayor's office, (952) 939-8389.

City Manager

John Gunyou (952) 939-8200

Newsletter Editor

Jacque Larson (952) 939-8200

E-mail: comments@eminnetonka.com

Internet: www.eminnetonka.com

Council

At Large: Janis Callison . . (952) 935-7010 jcallison@eminnetonka.com
Terry Schneider (952) 934-9529 tschneider@eminnetonka.com
Ward 1: Bob Ellingson . . (952) 931-3065 bellingson@eminnetonka.com
Ward 2: Tony Wagner . . . (952) 512-1817 twagner@eminnetonka.com
Ward 3: Brad Wiersum . . (952) 930-3681 bwiersum@eminnetonka.com
Ward 4: Al Thomas (952) 949-9027 athomas@eminnetonka.com

Minnetonka Mike (952) 939-8586 mike@eminnetonka.com

POLICE-FIRE: Emergency 9-1-1

Non-emergency (952) 939-8500 or 9-1-1

ECRWSS
POSTAL PATRON