

# Minnetonka Comprehensive Plan Steering Committee

---

Kick off meeting  
June 21, 2017

## Agenda :

---

- 6:00 – 6:15 Dinner
- 6:15 – 6:50 Welcome and Introductions
- 6:50 – 7:00 Imagine Minnetonka recap
- 7:00 – 7:15 Understanding the role of the Comprehensive Plan
- What is a Comprehensive Plan / What it isn't
  - Difference between Zoning/Comprehensive Plan
  - Regional Planning Context
- 7:15 – 8:00 Overview of the 2040 Comprehensive Guide Plan Update
- Current Comprehensive Guide Plan
  - Changes to the plan over time
  - Requirements and regional system statements
  - Anticipated issues to address
  - Approach, community engagement and schedule
- 8:00 Adjourn

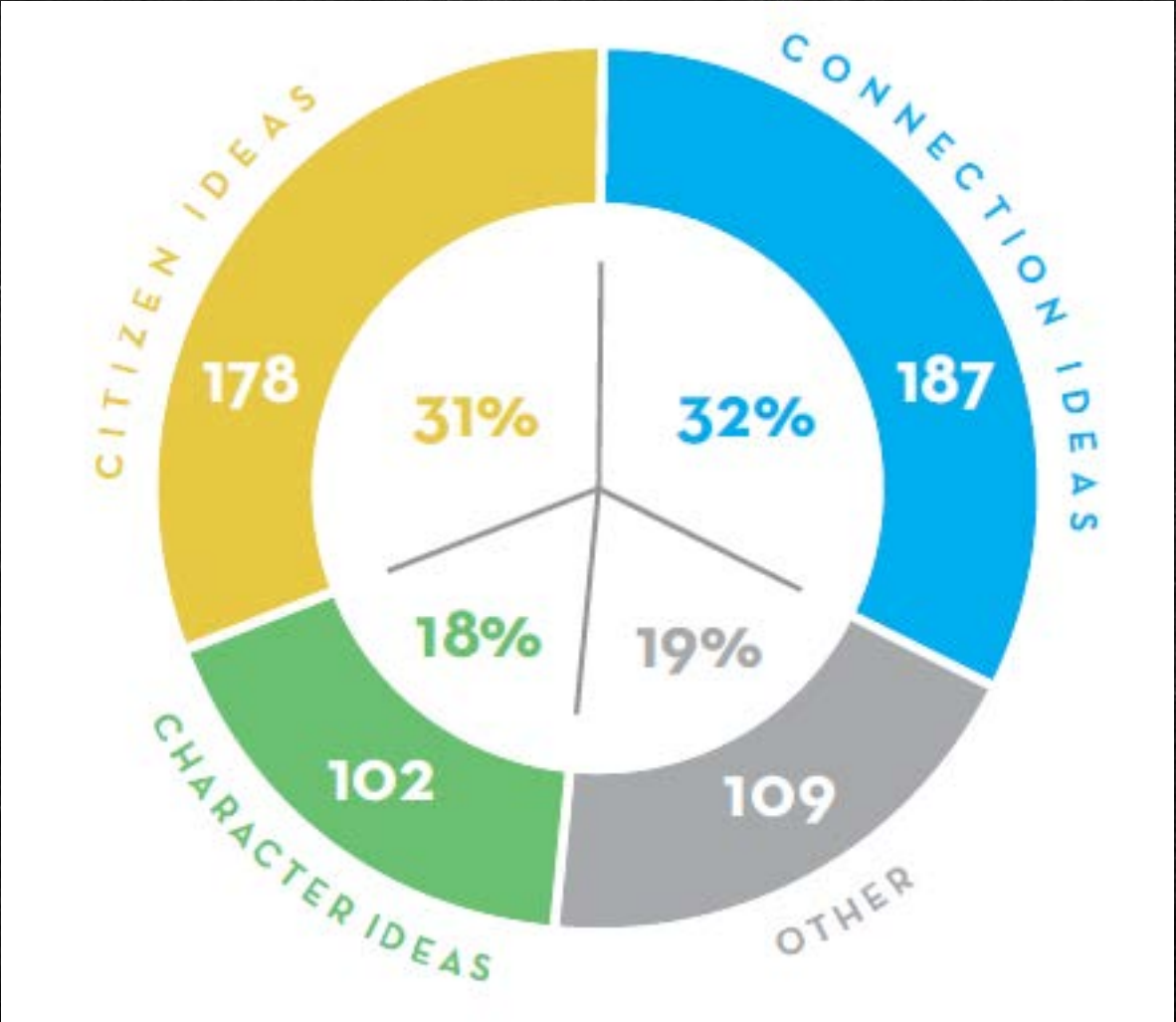
# Introductions

---

Imagine Minnetonka Recap

---

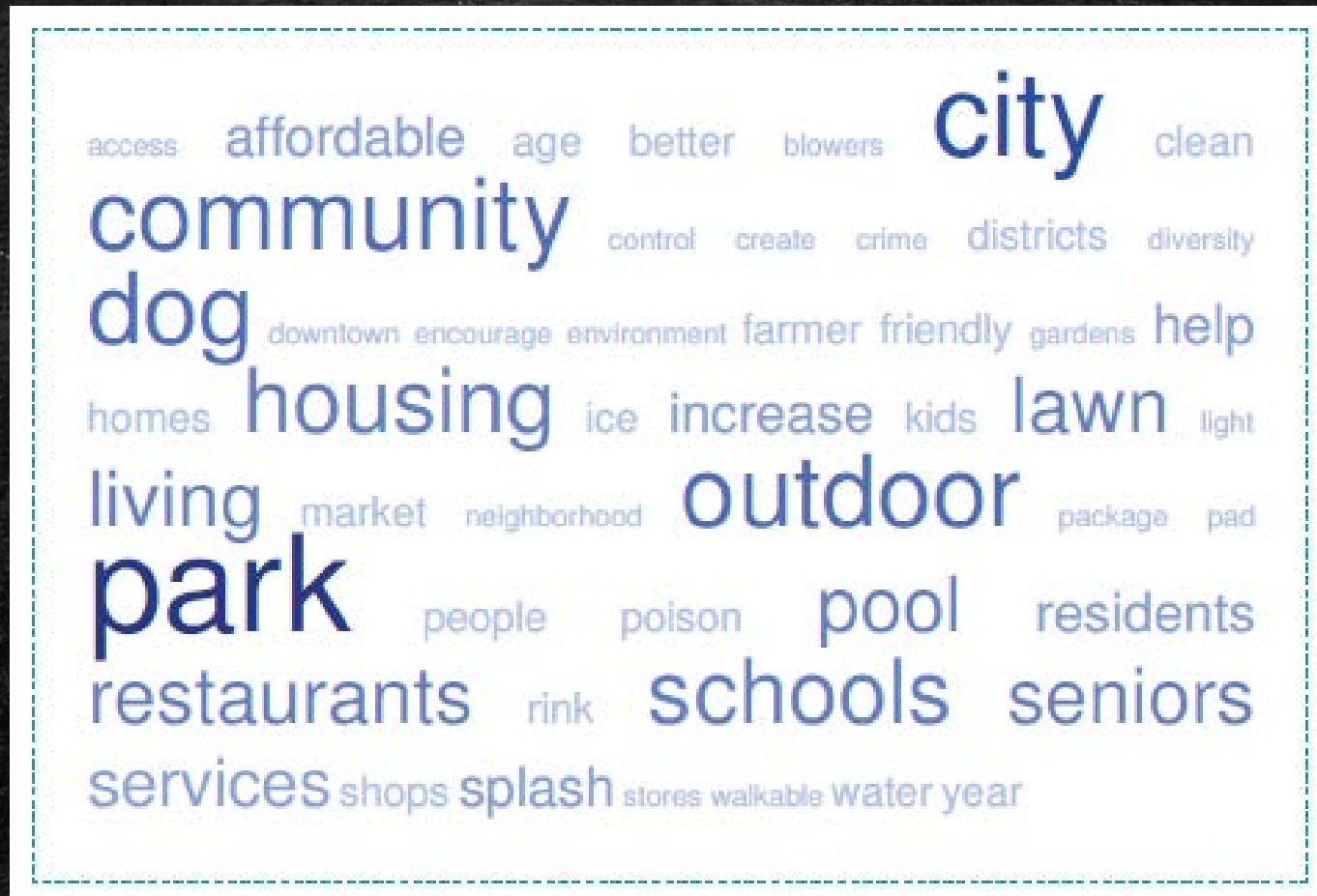
# The Three C's





# Concern for current and future citizens

---







# Recommendations

## RECOMMENDATIONS – HOW TO NAVIGATE MINNETONKA’S FUTURE

### RECOMMENDATIONS AT A GLANCE

RECOMMENDATION	RESIDENT INPUT ADDRESSED	FORCES AND TRENDS ADDRESSED
1. Monitor five signals for Minnetonka’s future (page 27)	Connection Citizens	Resources • Excess commercial office space Demographics • Increasing diversity • Urbanization • Population growth • Tribalism and identity politics Governance • Trust in government
2. Expand best practices for green infrastructure (page 28)	Character	Resources • Climate change Technology • Infrastructure overhaul
3. Create a visionary goal to connect all residents to woods and wetlands (page 31)	Character	Resources • Climate change Demographics • Increasing population
4. Proactively collaborate with school leaders and other partners to address Minnetonka’s changing demographics (page 32)	Citizens	Technology • Digital Citizenship Demographics • Population growth • Increasing diversity • Tribalism and identity politics Governance • Citizen engagement
5. Develop a multimodal transportation plan that will safely connect major pedestrian areas and all bike • hike trails (page 33)	Citizens	Technology • Infrastructure overhaul Demographics • Aging in place • Urbanization Governance • Citizen engagement

RECOMMENDATION	RESIDENT INPUT ADDRESSED	FORCES AND TRENDS ADDRESSED
6. Diversify and improve housing stock (including retrofitting vacant commercial space) that appeals to young professionals, working families, and the elderly (page 36)	Citizens Character	Resources • Excess commercial office space Technology • Infrastructure overhaul Demographics • Aging in place • Increasing diversity • Population growth • Urbanization
7. Proactively engage and communicate with residents using best practices across multiple platforms (page 38)	Connection	Technology • Digital citizenship Demographics • Aging in place • Increasing diversity • Population growth • Tribalism and identity politics Governance • Rising demand for self-government • Trust in government • Citizen engagement
8. Use best practices in suburban redevelopment to strengthen the City’s village centers and develop the new Shady Oak Road and Opus light rail transit area (page 41)	Connection	Resources • Excess commercial office space Technology • Autonomous transit • Home health care delivery • Infrastructure overhaul Demographics • Aging in place • Increasing diversity • Population growth • Urbanization Governance • Trust in government • City-to-city collaboration • Citizen engagement
9. Update the Minnetonka Citizen Academy (page 42)	Citizens Connection Character	Technology • Education reform Demographics • Population growth Governance • Trust in government • Citizen engagement

# Role of the Comprehensive Plan

---

# What is a Comprehensive Plan?

---

- [https://www.youtube.com/watch?v=OkbDYp\\_ezQ8](https://www.youtube.com/watch?v=OkbDYp_ezQ8)
- “a compilation of policies, goals, standards and maps for guiding the physical, social and economic development, both public and private, of the municipality and its environment....” – M.S.S. 463.352
- It is the primary document used to guide governmental policy decisions.
- The comprehensive plan is a guidance document. It is not zoning which is law and implements themes from the comprehensive plan.
- It is required by Minnesota Law in the 7 county metropolitan area.
- Minnetonka has completed 5 Comprehensive Plans since incorporation – 1962, 1973, 1981, 1999 and 2008



# Overview of the 2040 Comprehensive Guide Plan Update

---

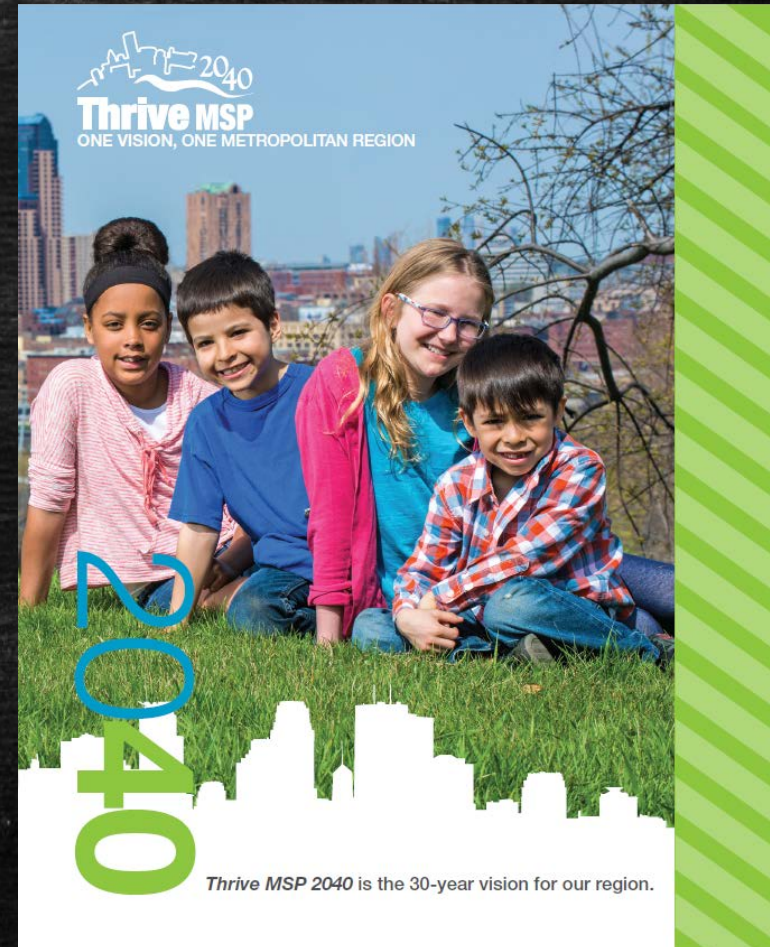
# Consistency with the Regional Systems

- Thrive MSP 2040 – the new regional development guide containing policy plans and regional system plans to prepare local comprehensive plan updates. All local plans must be consistent with Thrive and approved by the Metropolitan Council.
- 5 policy outcomes for the region's system and policy plans:
  - Stewardship
  - Prosperous
  - Equitable
  - Livable
  - Sustainable



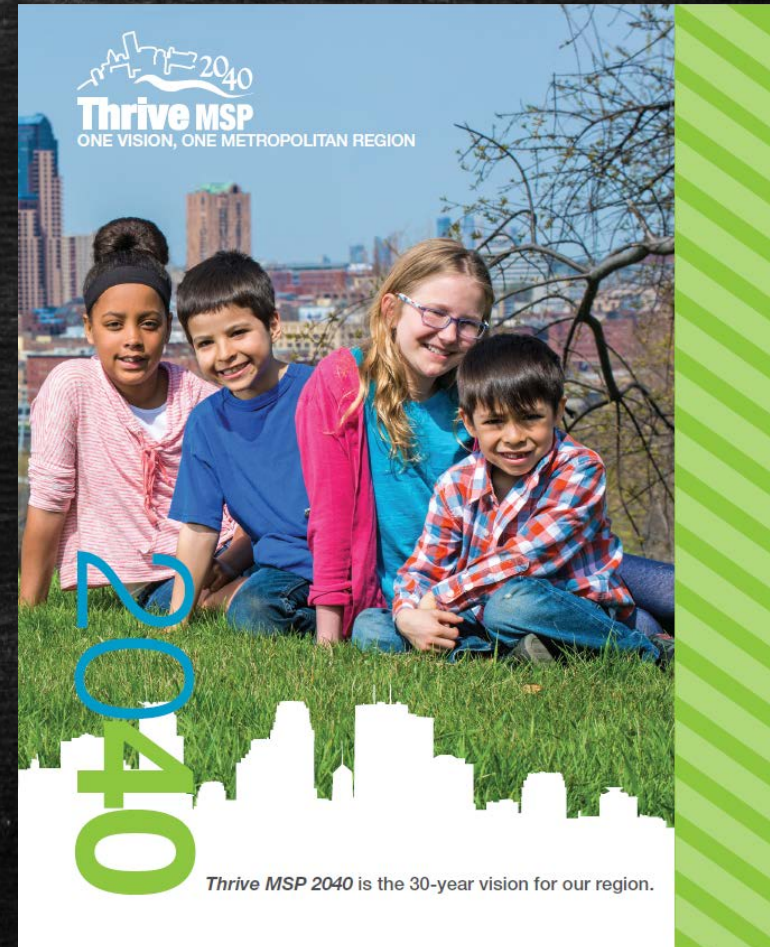
# Consistency with the Regional Systems

- 5 policy outcomes for the region's system and policy plans:
  - Stewardship
  - Prosperous
  - Equitable
  - Livable
  - Sustainable
- Principles defining implementation of regional policy:
  - Integration
  - Collaboration
  - Accountability



# Consistency with the Regional Systems

- General Thrive themes:
  - Need for resiliency
  - Changing population
  - Financial resources are inadequate
  - Preserve and maintain infrastructure
  - Environmental challenges
  - Need for collaboration to solve regional issues



# Consistency with the Regional Systems

---

A few regional demographic stats in a nutshell...

Region will prepare to accommodate by 2040...

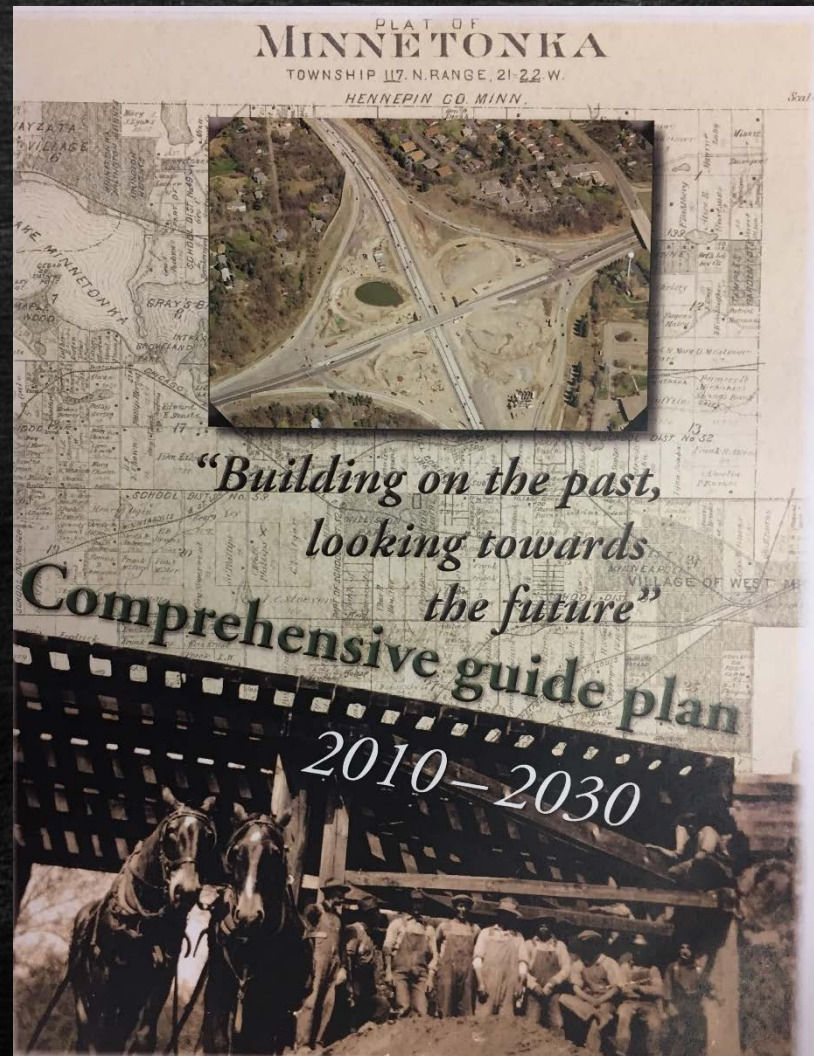
- **824,000 more people** (3.7M; 30% increase from 2010)
- **391,000 new households** (of those, 1 in 5 will have children; 13,000 d.u./annually)
- **550,000 new jobs** (2M+; 36% increase)

Region's population will continue to change. By 2040...

- **1 in 5 will be age 65+** (1 in 9 in 2010)
- 40% of population people of color
- Population growth trend remains stable with 2/3rds of new residents homegrown and 1/3<sup>rd</sup> from migration.



# Current Comprehensive Plan



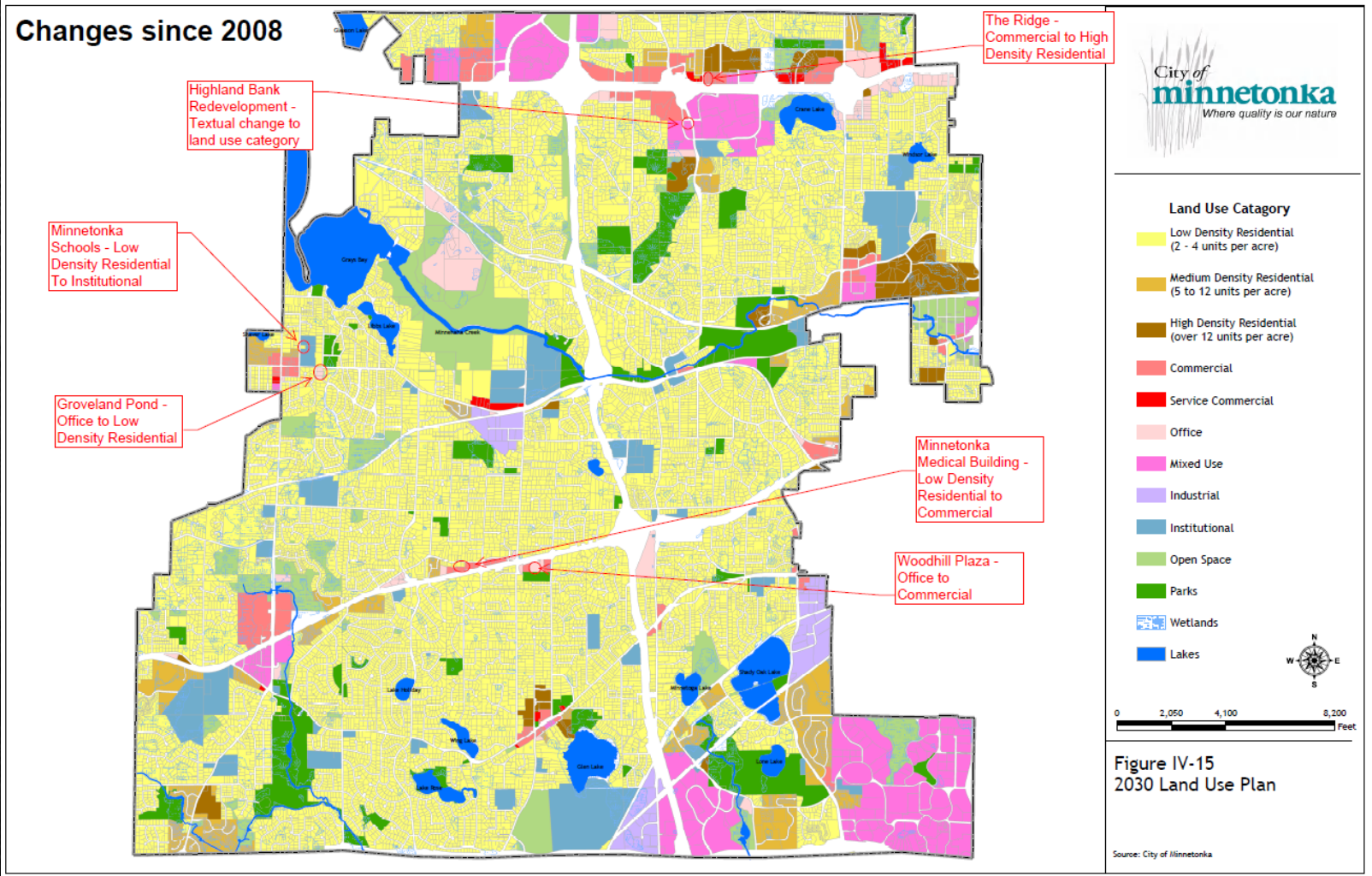
# Current Comprehensive Plan

---

## Overall Growth Strategy Themes:

- Stability in Established Areas
- Diversity in Household and Housing Types
- Increase Vitality in Neighborhood, Community and Special Purpose Village Areas
- Support for Regional Centers and Corridors
- Connectivity
- Resource Protection and Sustainable Practices

# Current Comprehensive Plan



# Minnetonka's Comprehensive Plan Update

---

## Minimum Plan Section Requirements:

- Land Use
- Transportation
- Water Resources
- Parks and Trails
- Housing
- Implementation

## Optional:

- Resilience
- Economic Competitiveness

# Minnetonka's Comprehensive Plan Update

---

Some anticipated areas of focus:

- Accommodating additional population, household and employment
  - **Land Use, Housing, Transportation, Parks and Trails, Infrastructure**
- Regional Center reinvestment/redevelopment
- Mobility – traffic congestion/mitigation, reconstruction, sidewalks/trails
- Neighborhood stability v. change v. reinvestment
- Housing production and diversity

# Minnetonka's Comprehensive Plan Update

Taking on our share of regional growth:

	2010 (actual)	2014 (est.)	2020	2030	2040
Population	49,734	51,144	53,200	58,000	61,500
Households	21,901	22,477	24,200	26,600	28,300
Employment	44,228	46,842	54,400	58,900	63,200

## Affordable Housing Need Allocation for Minnetonka

At or below 30% AMI	508
31 to 50% AMI	412
51 to 80% AMI	144
<b>Total Units</b>	<b>1,064</b>



# Tentative Steering Committee Schedule for 2017

---

All meetings will be in the Minnehaha Room located in the lower level of city hall:

- July 12
- August 16 or August 23
- September 13
- October 11
- November 15
- December 13



Thank You!

---