

Ridgedale Area Project Update

Second Informational Meeting
October 5, 2015

City Project Personnel

Introductions

Will Manchester, Director of Engineering

Julie Wischnack, Community Development Director

Jeremy Koenen, Assistant City Engineer

Project Consultants

Introductions

Lee Gustafson, WSB and Associates
Project Manager

Matt Pacyna, SRF Consulting Group
Cartway Lane/Ridgedale Drive Design

Joan Macleod, Damon Farber Associates
Street Light Planning and Design

Jack Corkle, WSB and Associates
Pedestrian and Trail Planning

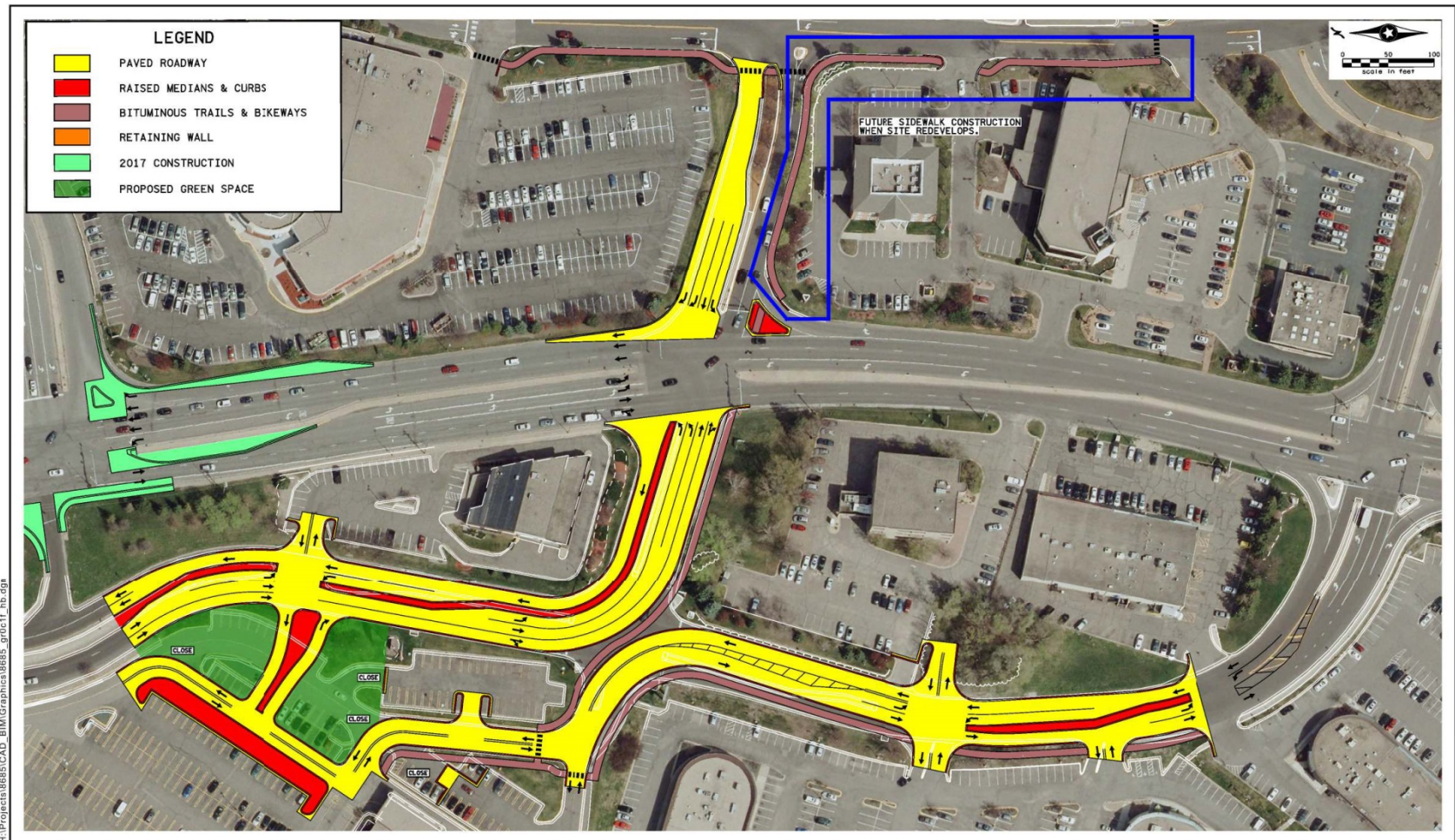
Agenda

- Background
- Ridgedale Area Projects
 - Cartway Lane/Ridgedale Drive
 - Street Light Planning and Design
 - Pedestrian and Trail Planning
- Next Steps / Schedule
- Questions / Open House

Background

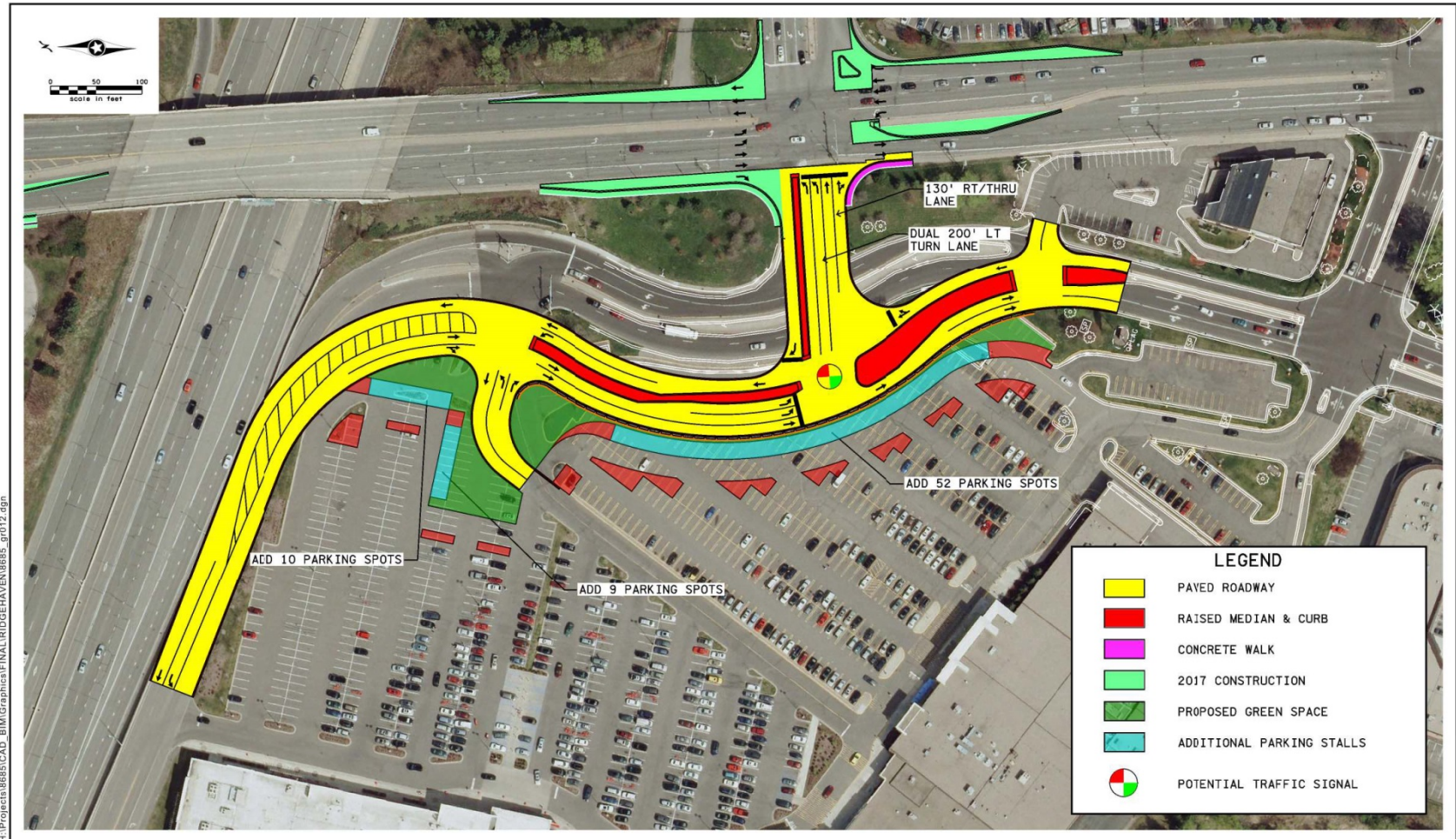
- 1st Informational Meeting – August 3
- City Council Meeting – August 17
 - Cartway Lane/Ridgedale Drive
 - Reviewed recommended concept
 - Directed staff to consider other options
- Meetings with local businesses

August 17 Recommended Concept



H:\Projects\8685\CAD_BIM\Graphics\8685_g01c1f_1b.dgn

Alternative 4 – Ridgehaven Signal



H:\Projects\8685\CAD_BIM\Graphics\FINAL\RIDGEHAVEN\8685_gr012.dgn



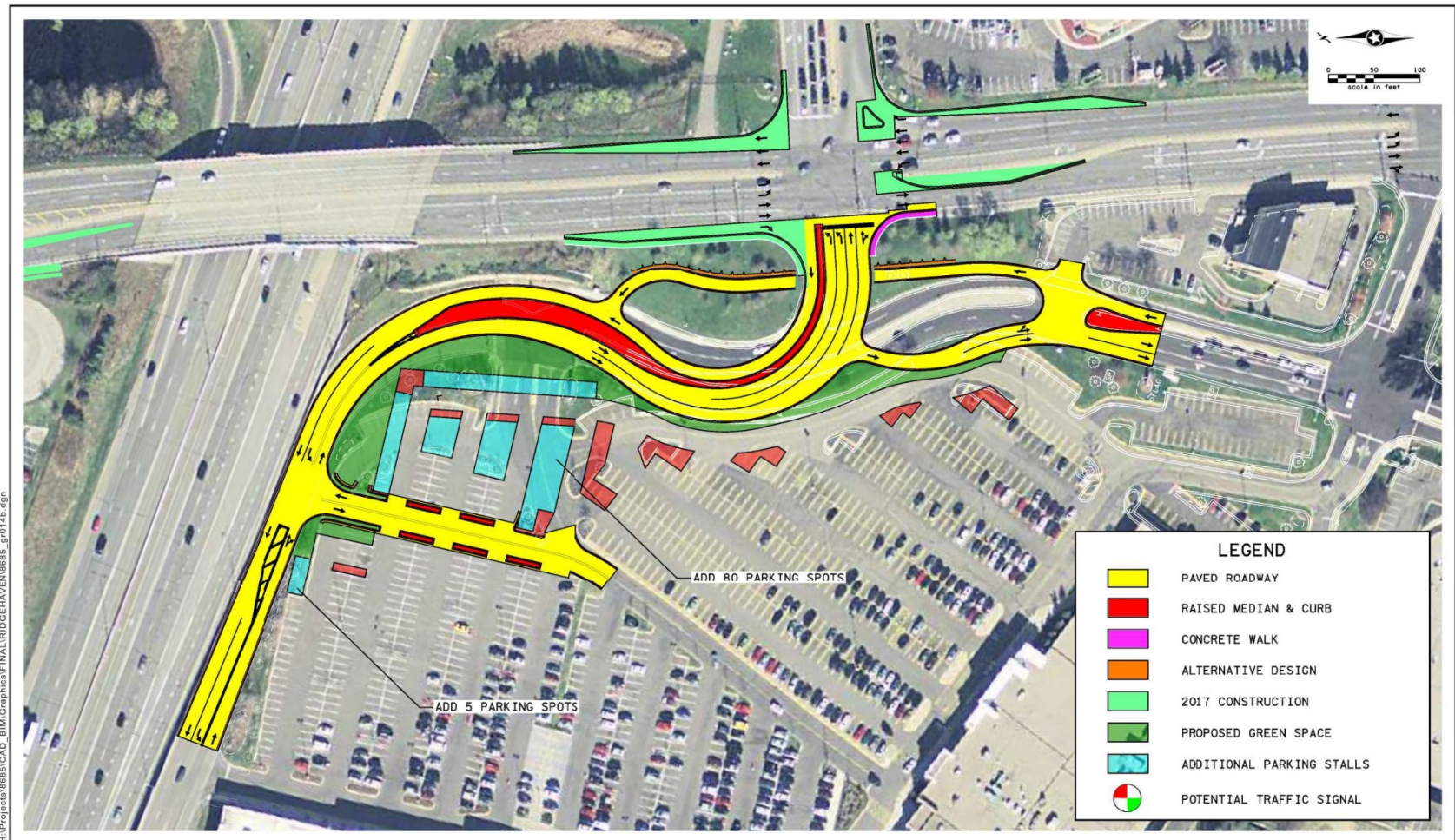
ALTERNATIVE 4

Ridgedale Drive / Cartway Lane Alternative Evaluation
MINNETONKA

Job # 8685
10/1/2015

Figure 4

Alternative 5B – NB Underpass



H:\Projects\8685\CAD_BIM\Graphics\FINAL\RIDGEHAVEN\8685_gf014b.dgn

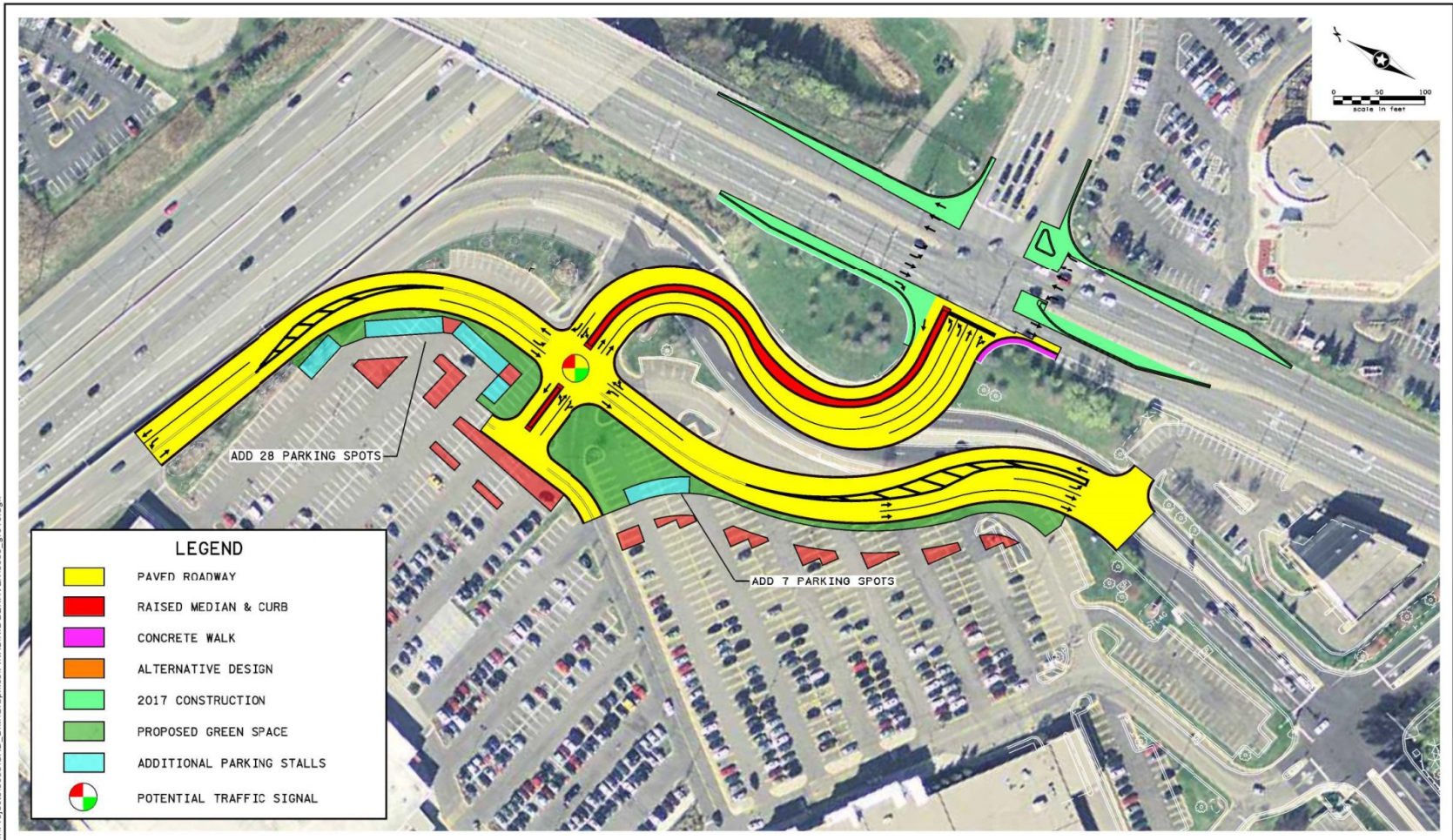


ALTERNATIVE 5B
Ridgedale Drive / Cartway Lane Alternative Evaluation
MINNETONKA


Job # 8685
10/1/2015

Figure 5B

Alternative 7 – New Target Signal



H:\Projects\8685\CAD_BIM\Graphics\FINAL\RIDGEHAVEN\8685_gr016.dgn



Joan Macleod, Damon Farber
Street Light Planning and Design



Corridor Video – Plymouth Road

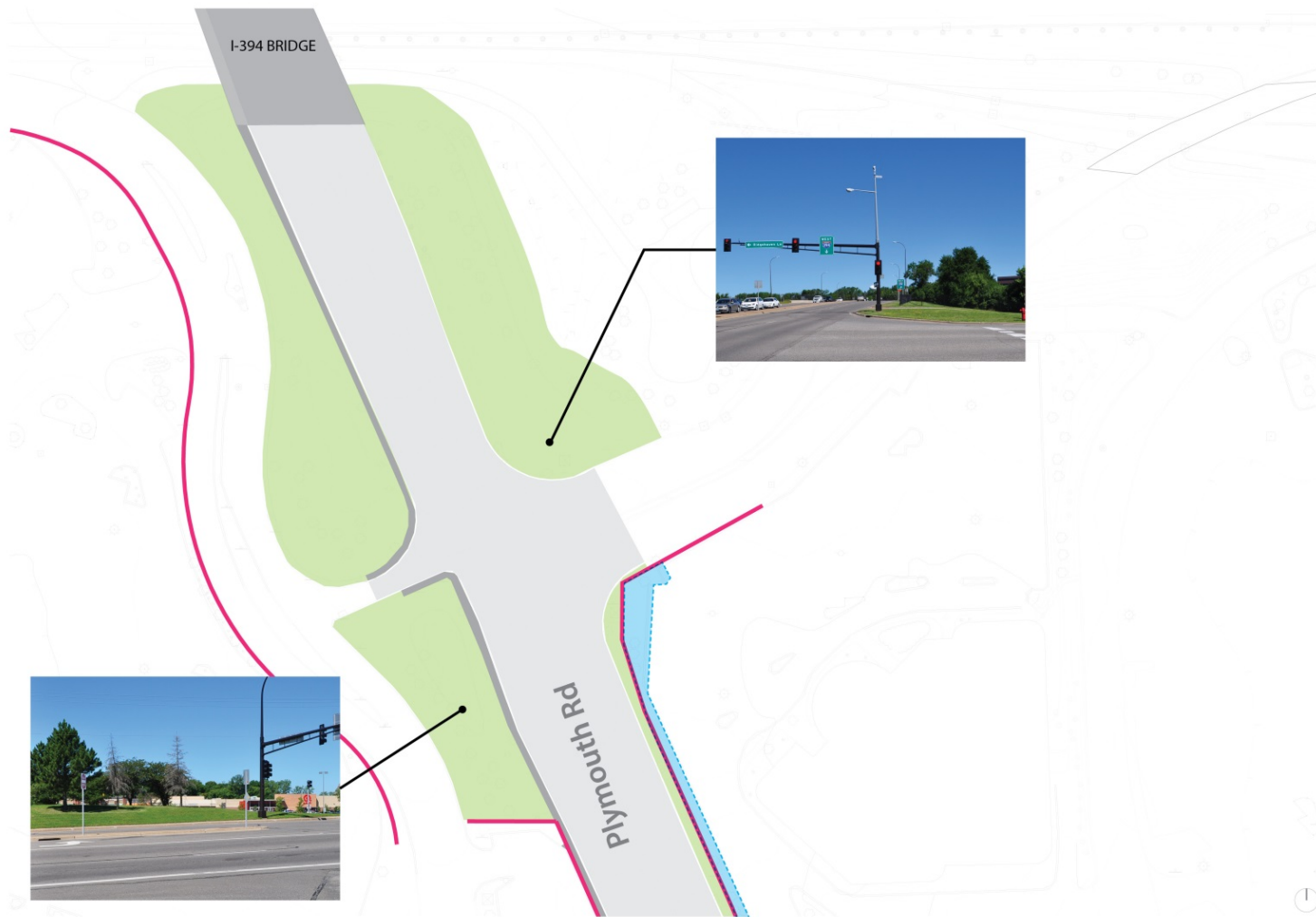
Project Site



Character Analysis



Character Analysis - North



KEY MAP



LEGEND

- R.O.W.
- Open Space
- Sidewalk
- Opportunity

Character Analysis - Middle



KEY MAP



LEGEND

- R.O.W.
- Open Space
- Sidewalk
- Opportunity

Character Analysis - South



Design Principles

Public Realm Improvements Lighting Fixture Selection

Lighting is one of the urban furnishings that can contribute to defining a District or Neighborhood with a sense of style or character.

OPPORTUNITY

- **Project Based** – Capital Improvements Plymouth Road
- **Establish** an updated Identity for the Ridgedale Area
- **Cost effective** to do when change is occurring
- **Upgrade** to GREEN technologies
- International Dark Sky Standards

CONSIDERATIONS

Style and Aesthetics – Creating a Sense of Place and Identity for Ridgedale Area

- Pole
- Fixture
- Arms
- Accessories

Energy Efficiency : LED Technology

- Less Energy
- Greater Longevity 50,000 + Hours

Safety: Getting the right amount and quality of light

- Highway
- Street
- Pedestrian
- Combination

Maintenance

- Durability
- Availability of Parts
- Cost: Initial installation and Life span
- Ease of Repair

Design Precedents



Living an Active Lifestyle within the Beauty of a Natural Environment



New Investments Bring New Opportunities



Existing Light Standards



Local Streetscapes



Park Place - St Louis Park, MN

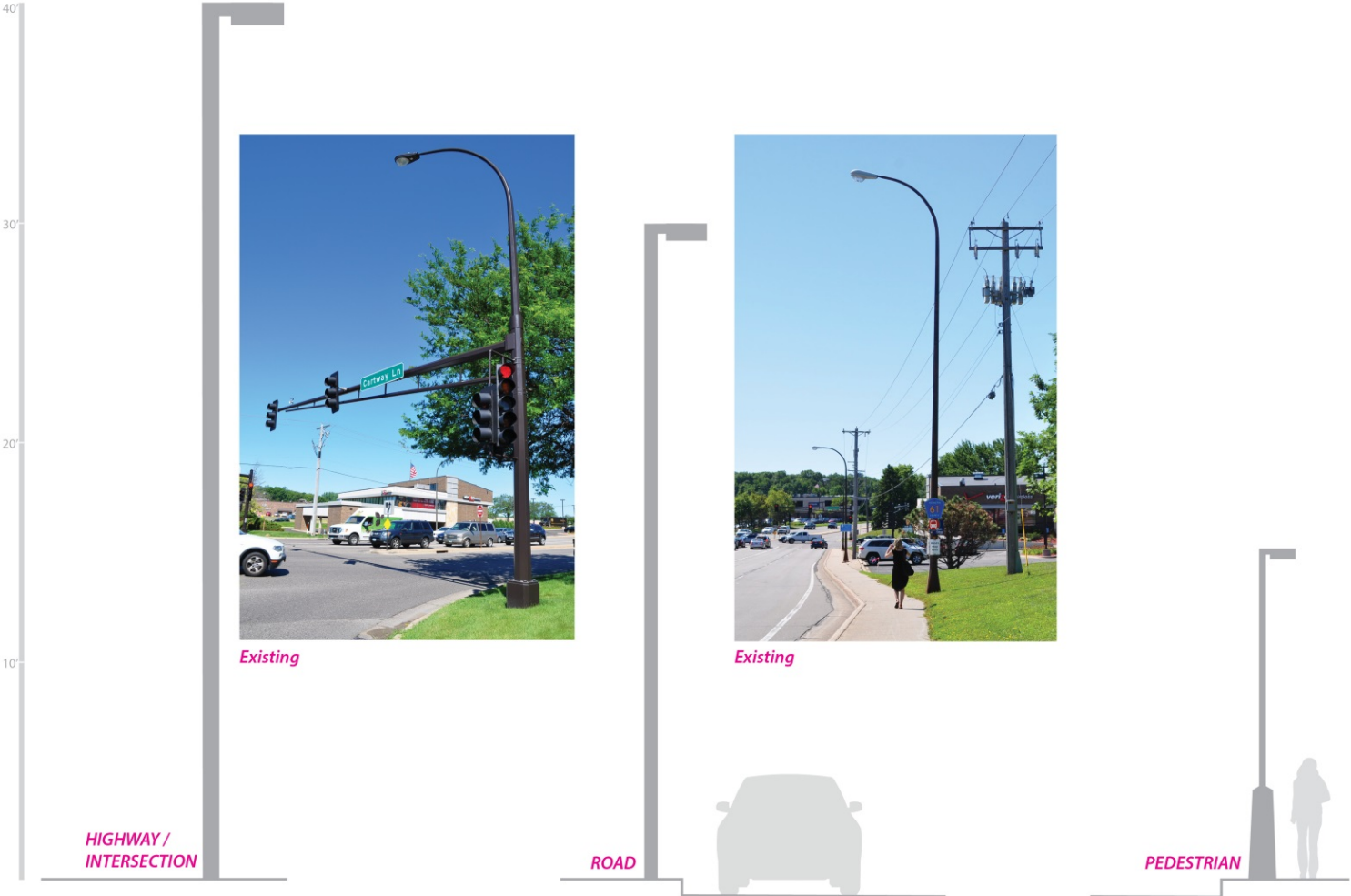


Downtown Osseo, MN

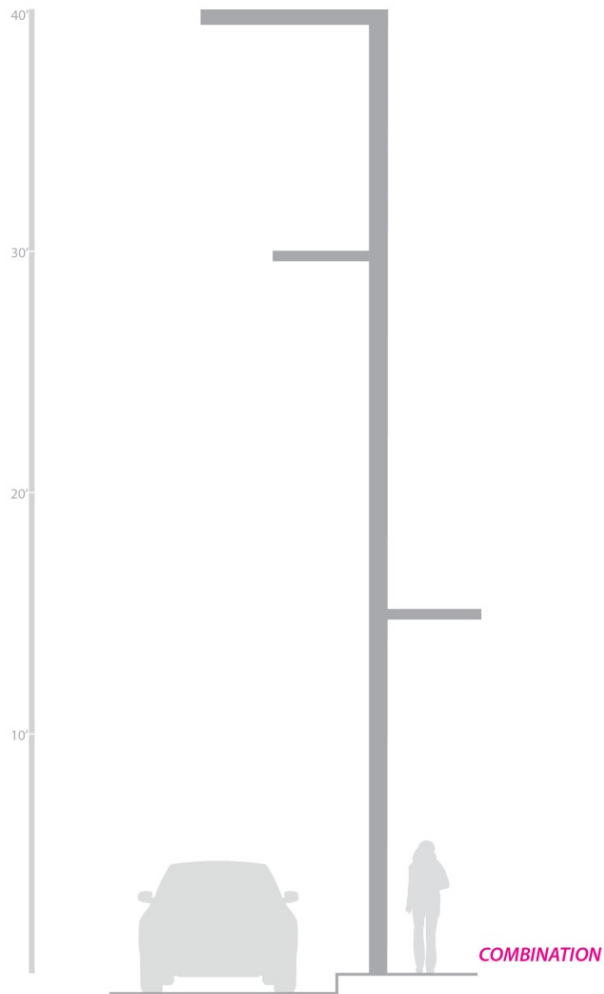


Excelsior Blvd - St Louis Park, MN

Existing Lighting



Lighting Options



Lighting Options

SABI

Rounded tapered concrete and aluminum pedestrian and roadway poles up to 40' in height. Luminaire by others.

PRODUCTS

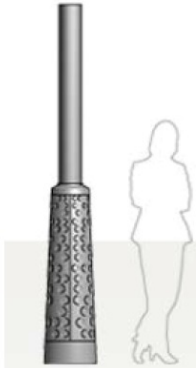
SABI: 6" POLE, 48" BASE
SABIXL: 8" POLE, 64" BASE
SABI-C: 6" POLE, 48" BASE
SABI-CXL: 8" POLE, 64" BASE

- 1
- 2
- 3
- 4
- 5
- 6



SPECS

TECHNICAL



Concrete or Metal Textures and Patterns

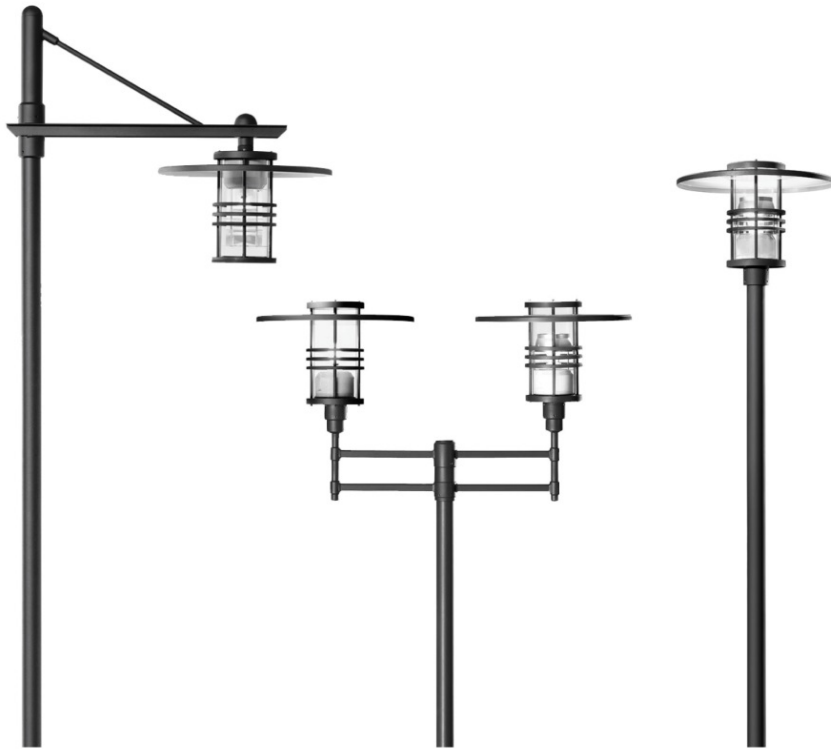


Wood Base



Winnetka Avenue-Golden Valley, MN

Lighting Options



Lantern Style

Lighting Options



Modern Style



Lighting Options



Contemporary Style



Jack Corkle, WSB and Associates

Pedestrian and Trail Planning

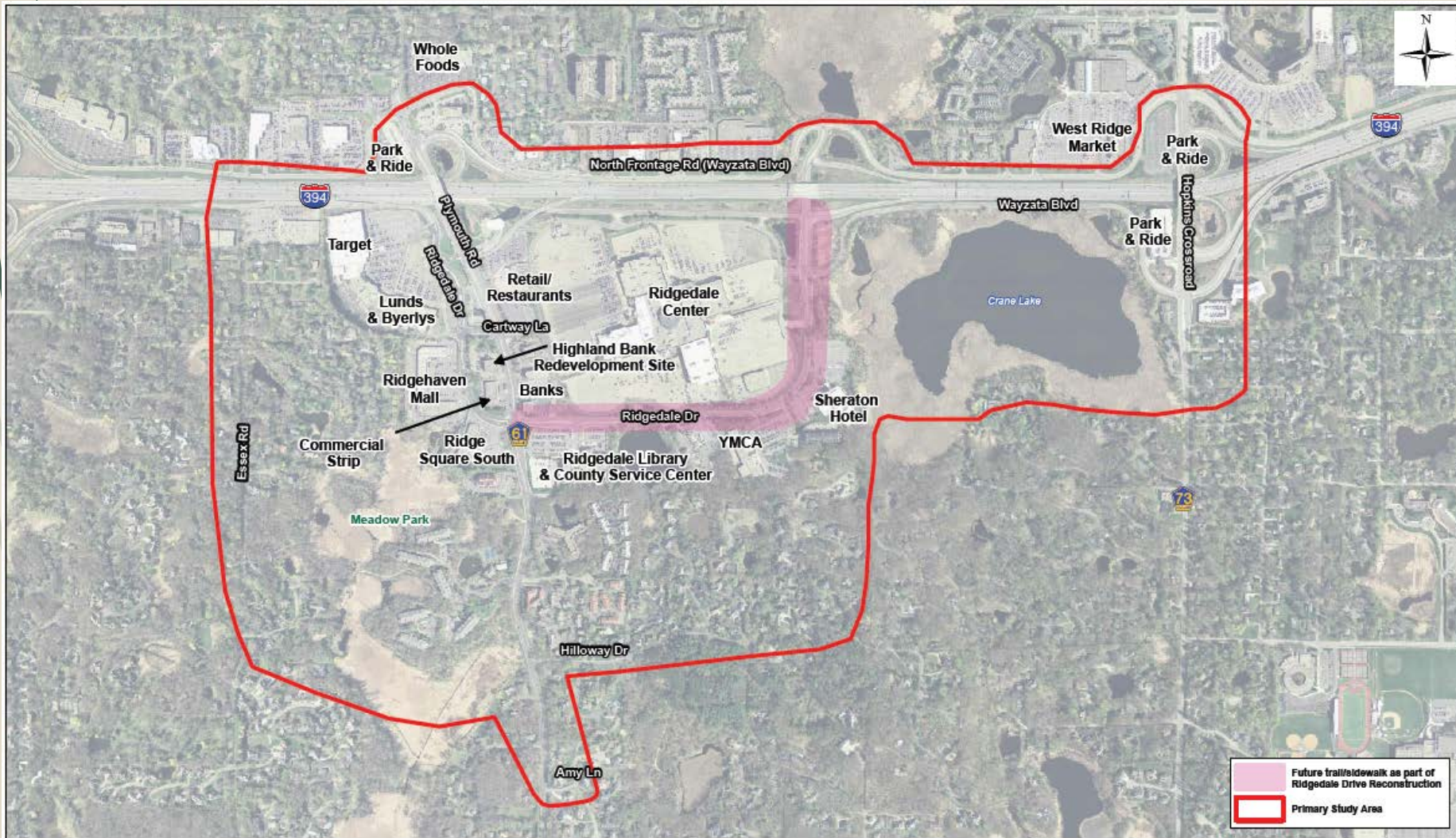
Pedestrian Planning

Key Tasks

- *Inventory and primary destinations**
- Barriers identification*
- Potential new linkages*
- Internal Ridgedale circulation and linkages to external network
- Recommendations
- Final report

*Need input tonight

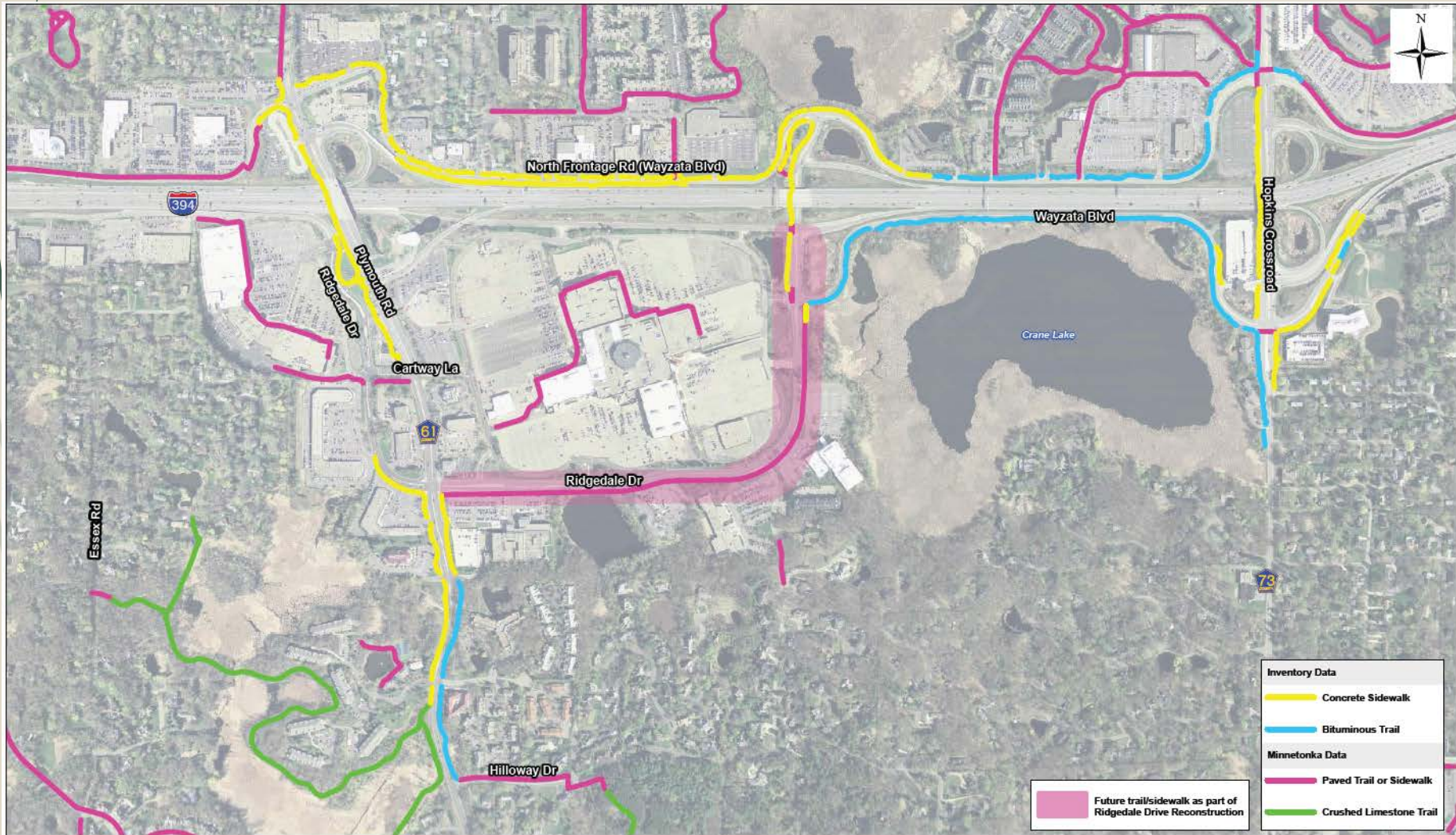
Study Area



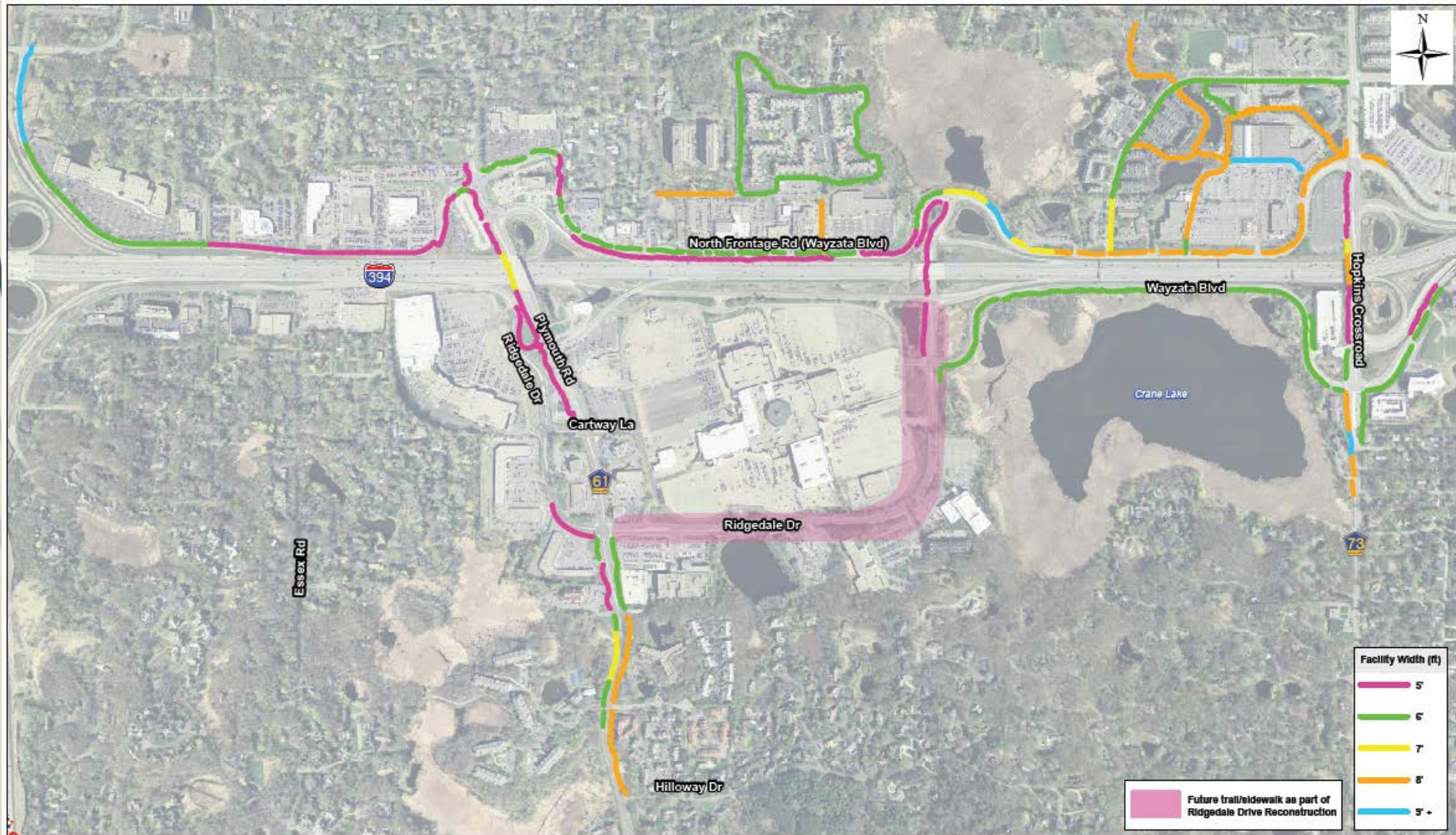
Inventory

- Existing sidewalks and trails
- Sidewalk and trail widths
- Setbacks from roadway edge
- Sidewalk and trail condition
- ADA inventory – high-level
- Bus stop locations
- Utility proximity
- Right of way

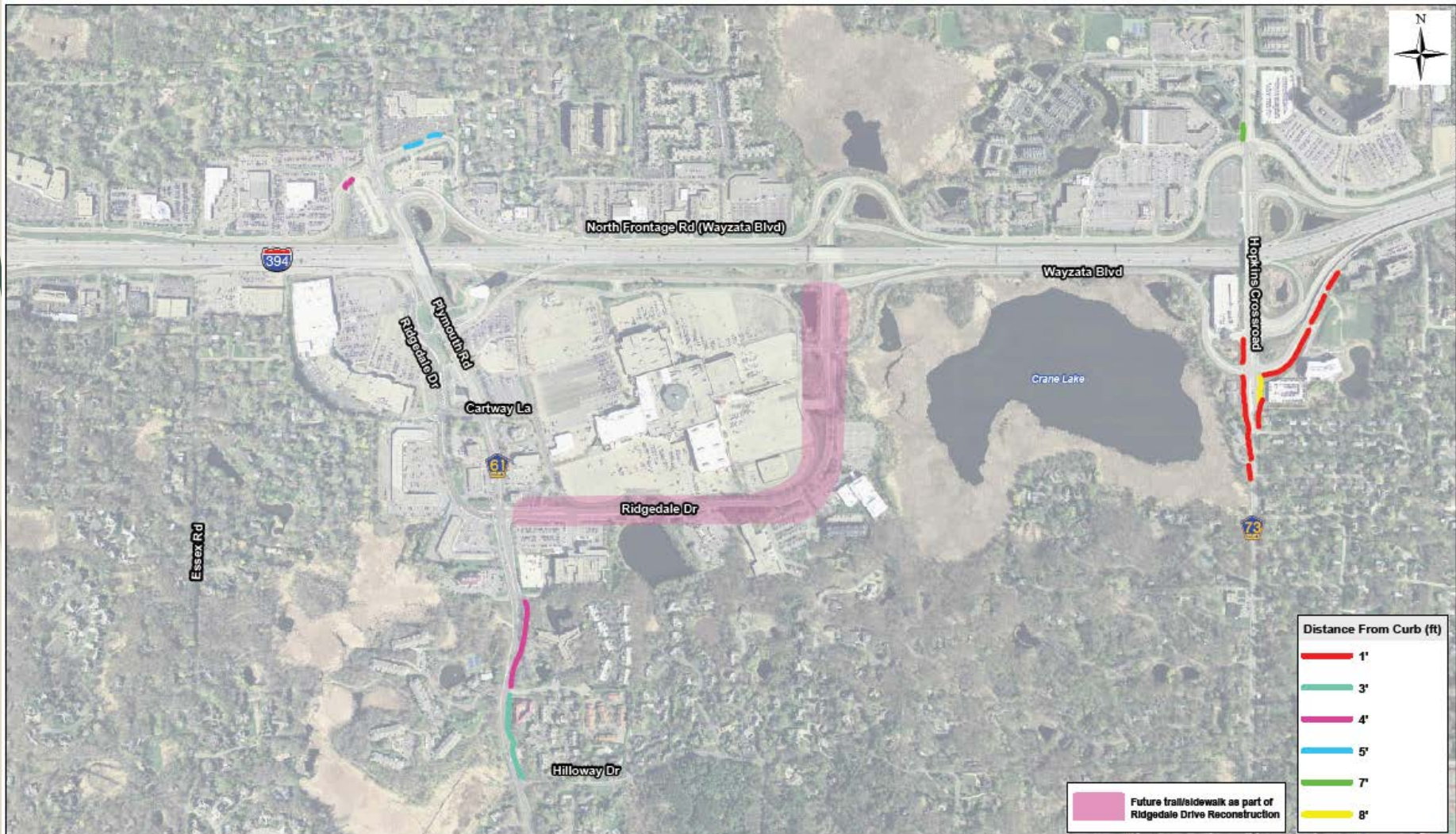
Existing Sidewalks and Trails



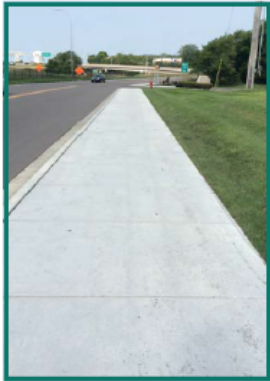
Sidewalk and Trail Widths



Pedestrian Distance from Curb

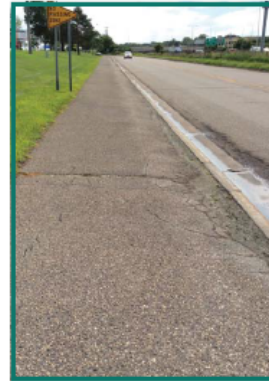


Sidewalk and Trail Condition



Excellent Condition

- › Uniform, flat cross-slope
- › No dips/heaves
- › Minimal small cracks
- › No obstacles in the vicinity
- › No spalling or displacement



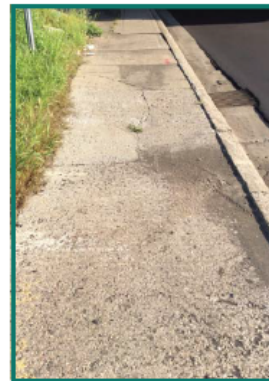
Fair Condition

- › Some large cracks
- › A moderate level of spalling
- › Slight non-uniform cross-slope
- › Small dips/heaves, not very level
- › One or two obstacles



Good Condition

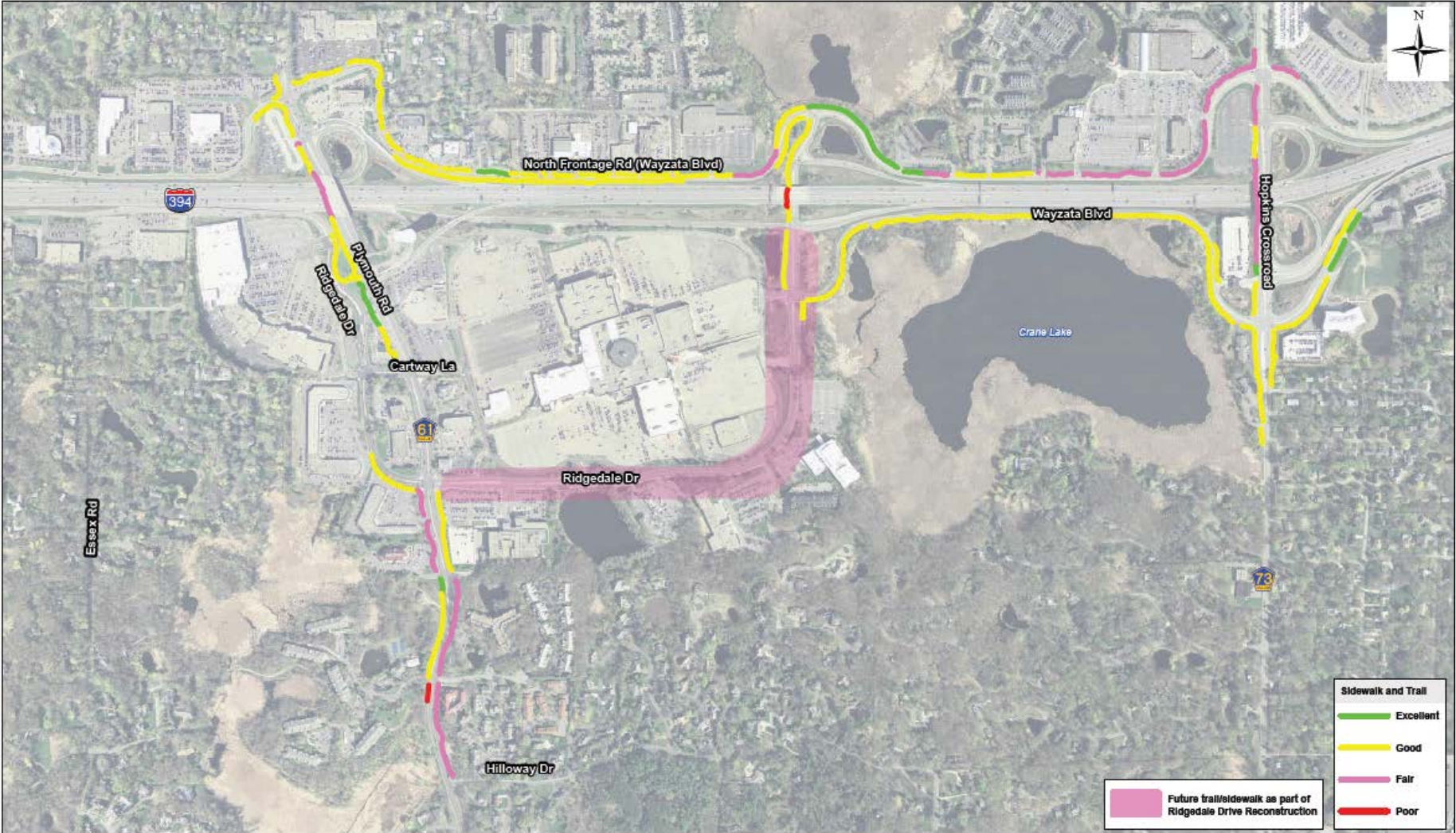
- › Uniform, flat cross-slope
- › Multiple cracks with minimal dips/heaves
- › Minor spalling
- › Minor displacement



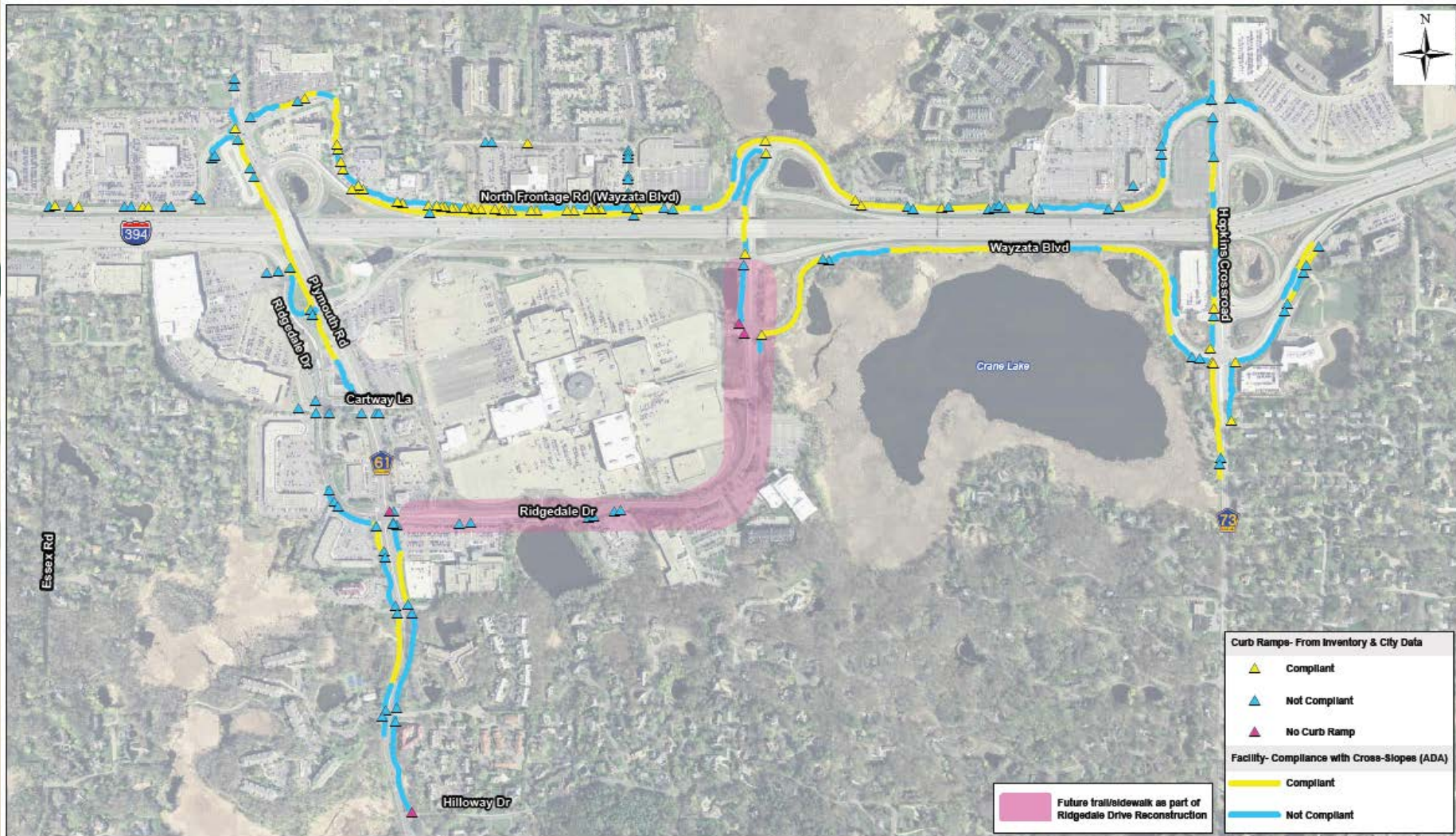
Poor Condition

- › Steep or multiple cross-slopes
- › Many multi-directional cracks
- › Concrete chunks missing
- › Excessive spalling
- › Large dips/heaves
- › Several obstacles

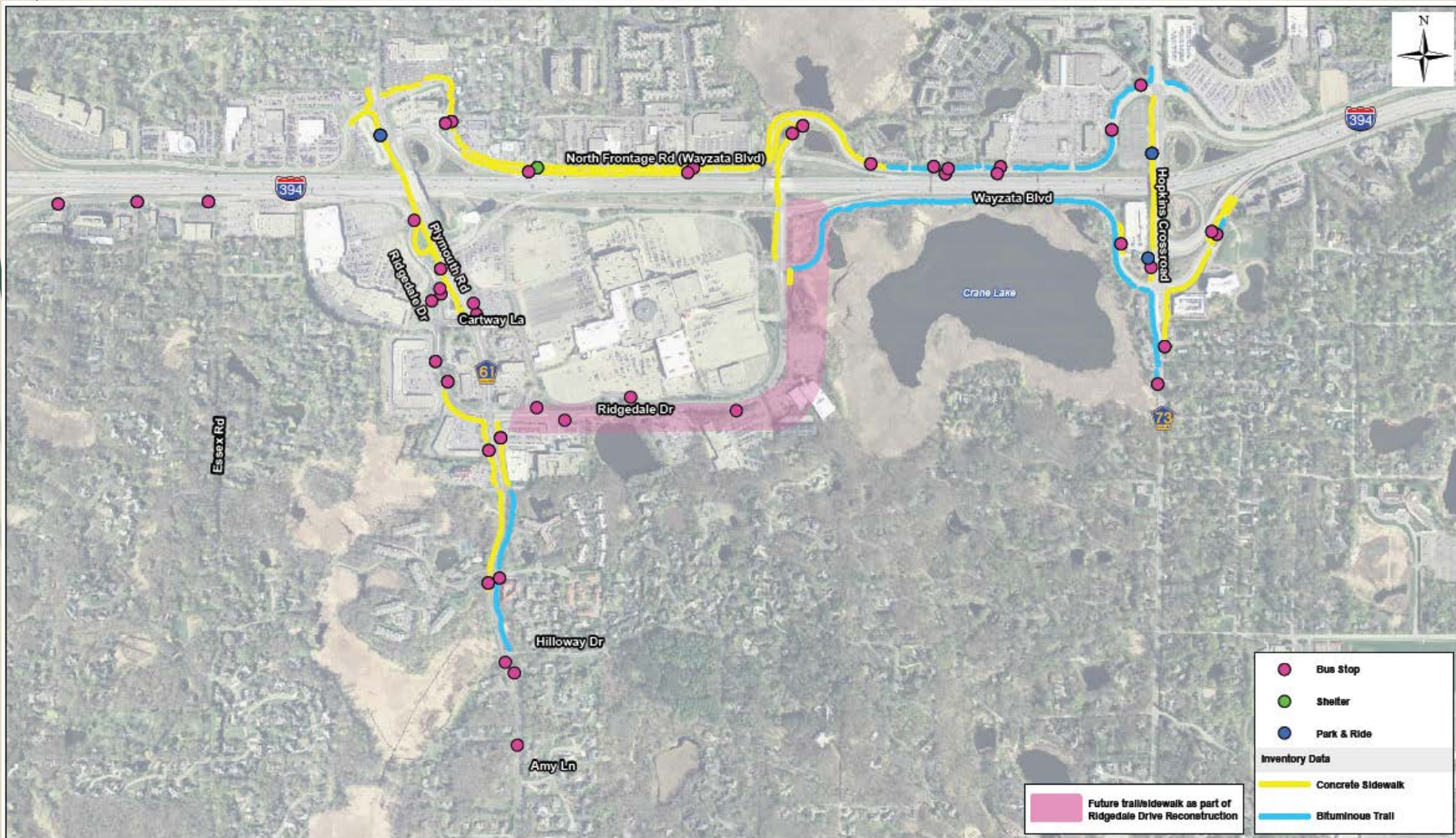
Sidewalk and Trail Condition



ADA Inventory



Bus Stop Locations



Utility Proximity

- See board on easel

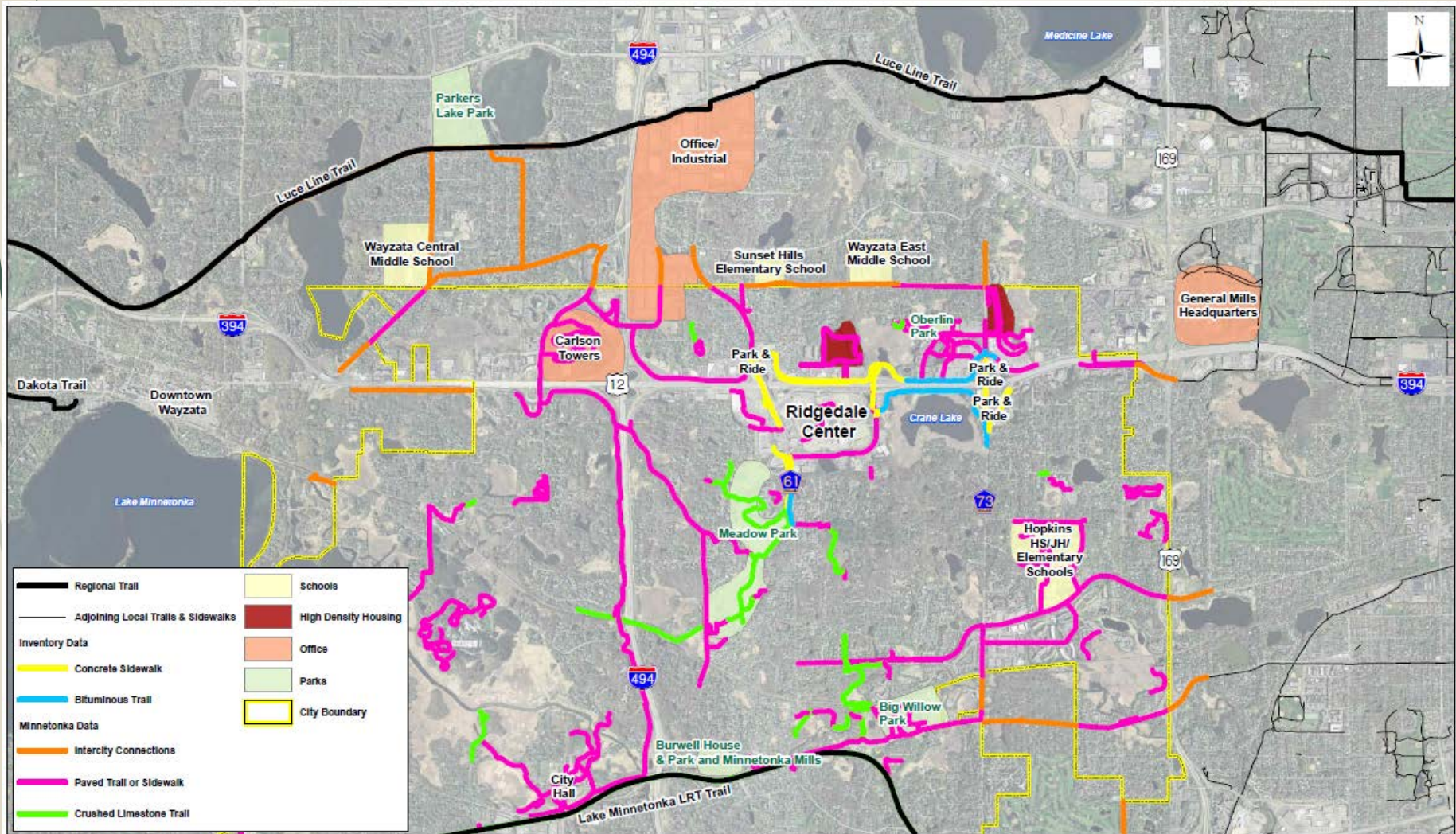
Right of Way

- Will be used to identify potential barriers
- Will be used to identify locations where additional property will need to be secured
- Will influence facility design

Destinations

- Internal – within the study area
- External – beyond the study area and linkages to adjacent communities

Key External Destinations



Next Steps & Schedule

- Ridgedale Area Project update meeting: October 5, 2015
- City Council update: October 19, 2015
- Ridgedale Area Project update meeting – final : November 12, 2015
 - Tentative – depending on status of studies
- Begin Cartway/Ridgedale Drive construction: 2016 / 2017

Ridgedale Area Project Update

Questions / Comments

Electronic Comments @ Minnetonka Matters

<http://minnetonkamatters.com/discussions/ridgedale-area>