

# Ridgedale Area Project Update

Third Informational Meeting  
December 1, 2015

# City Project Personnel

## Introductions

Will Manchester, City of Minnetonka  
Director of Engineering

Jeremy Koenen, City of Minnetonka  
Assistant City Engineer

# Project Consultants

## Introductions

Joan Macleod, Damon Farber Associates  
Street Light Planning and Design

Jack Corkle, WSB and Associates  
Pedestrian and Trail Planning

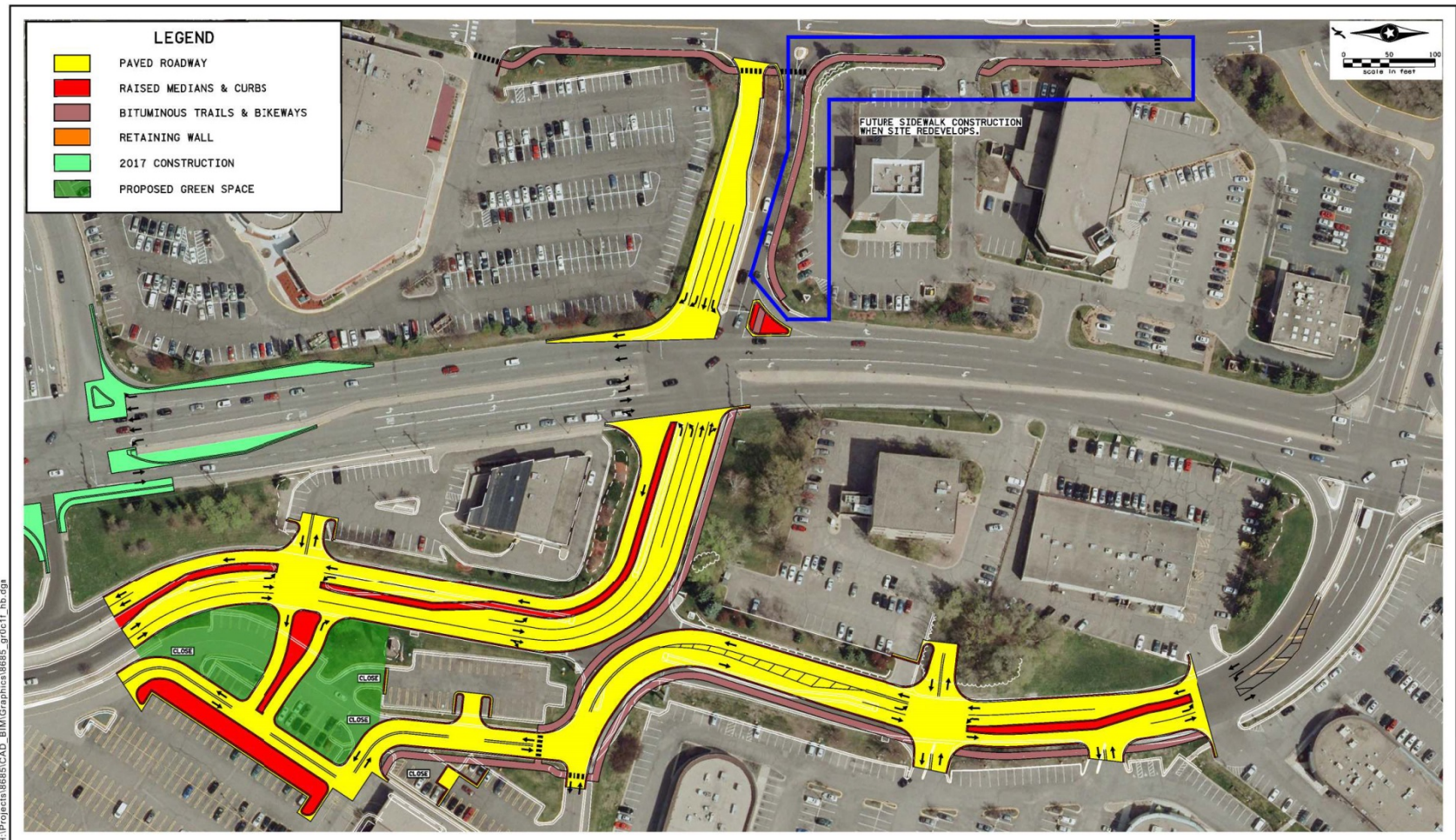
# Agenda

- Background
- Ridgedale Area Projects
  - Cartway Lane/Ridgehaven Lane/Ridgedale Drive
  - Street Light Planning and Design
  - Pedestrian and Trail Planning
- Next Steps / Schedule
- Questions
- Open House

# Background

- 1<sup>st</sup> Informational Meeting – August 3
- City Council Meeting – August 17
  - Cartway Lane/Ridgedale Drive
    - Reviewed recommended concept
    - Directed staff to consider other options
- Meetings with local businesses
- 2<sup>nd</sup> Informational Meeting – October 5
- City Council Study Session – October 19
  - Cartway Lane/Ridgehaven Lane/Ridgedale Drive
    - Preferred concept selected

# August 17 Recommended Concept



H:\Projects\8685\CAD\_BIM\Graphics\8685\_g01c1f\_1hb.dwg



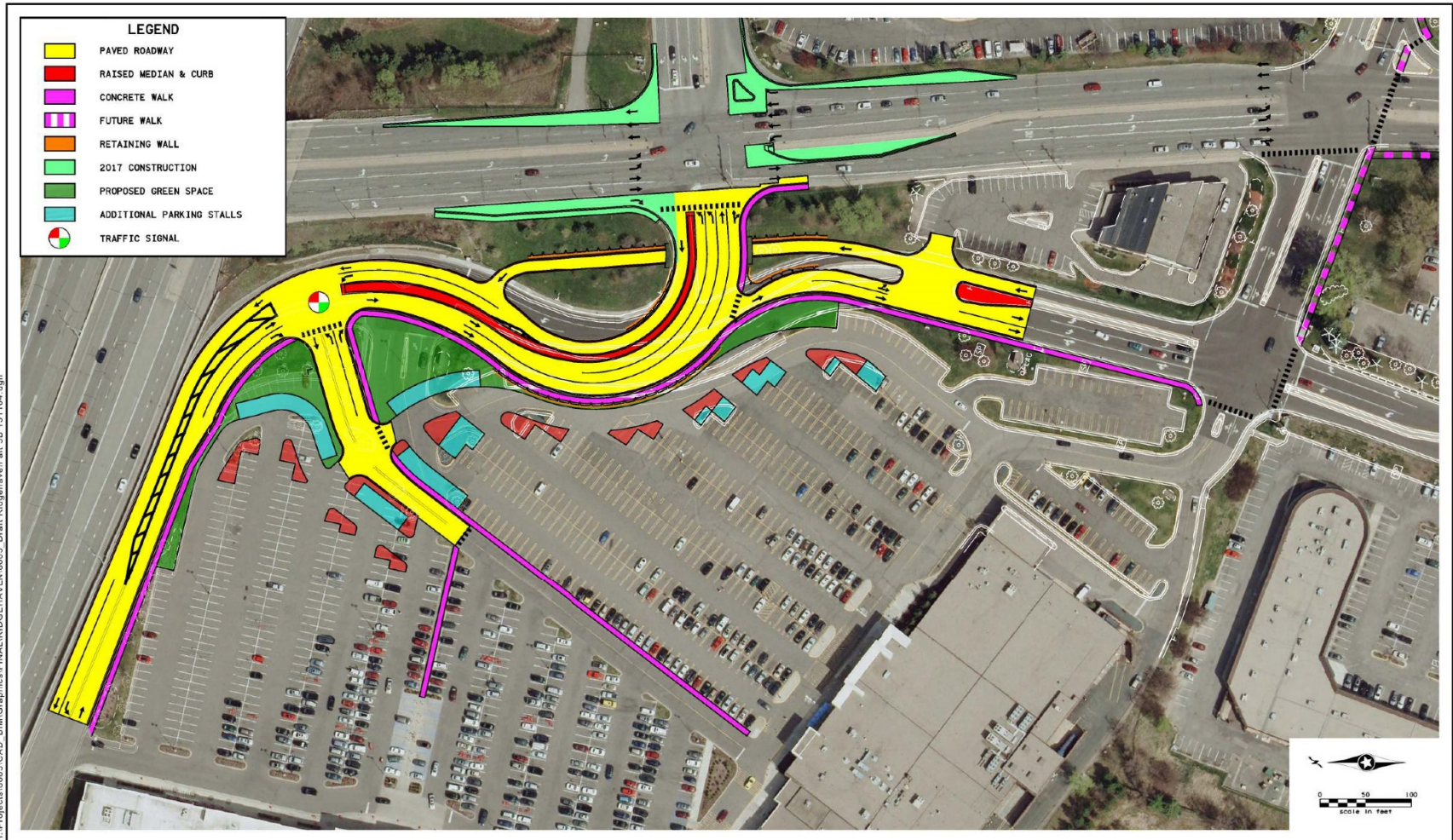
## ALTERNATIVE 3

Ridgedale Drive / Cartway Lane Alternative Evaluation  
Minnetonka

Job #8685  
10/1/2016


Figure 3

# Preferred Concept – Ridgheaven Underpass



H:\Projects\8685\CAD\_BIMI\Graphics\FINAL\RIDGEHAVEN\8685\_Draft\_Ridgheaven alt 5B 151104.dgn

Figure 5B-2



Joan Macleod, Damon Farber  
Street Light Planning and Design



# Ridgedale Area south of I-394



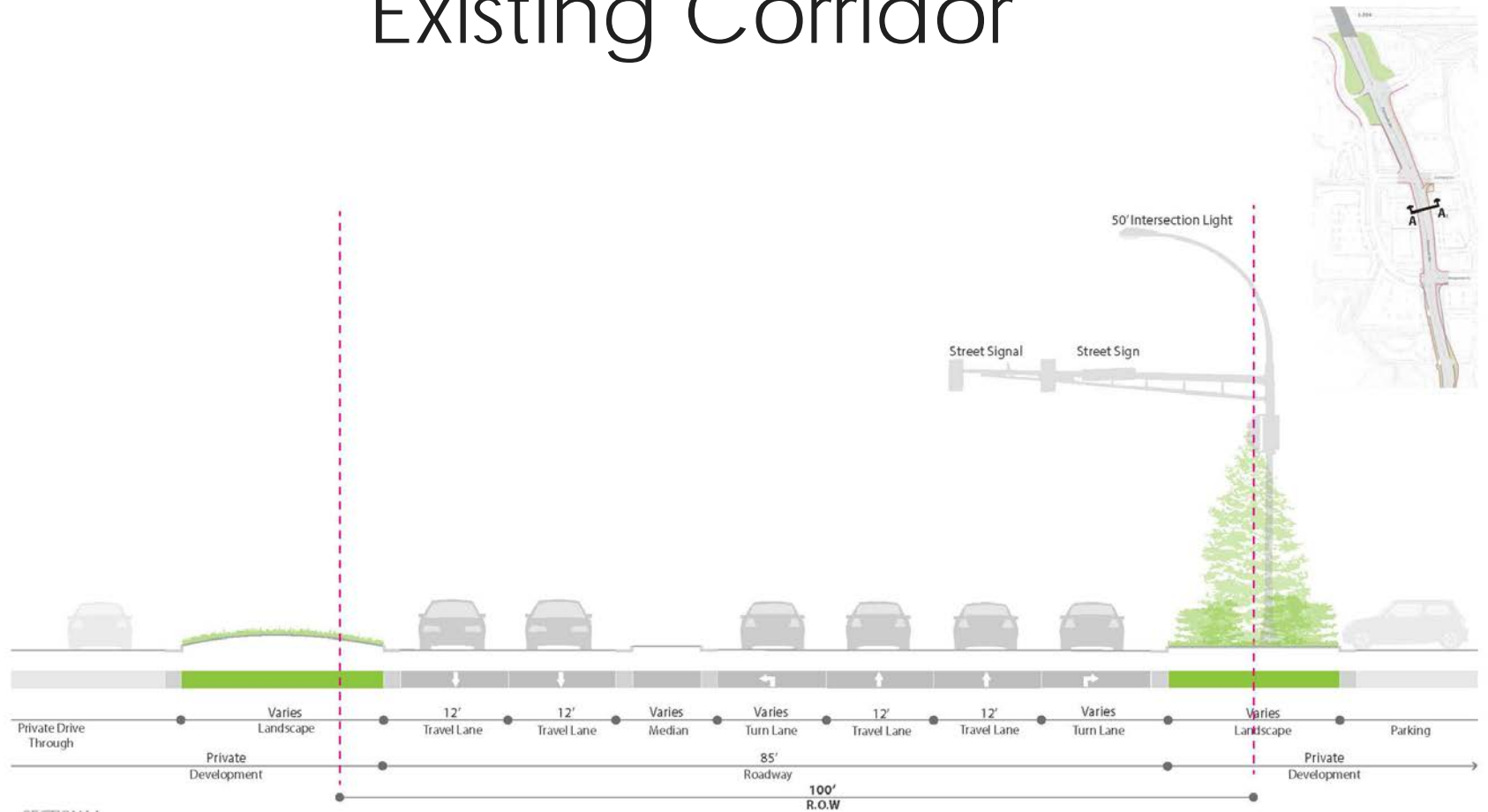
# 2016 - 2017 Improvements



# 2019 Improvements



# Plymouth Road Existing Corridor



SECTION AA

MINNETONKA PUBLIC REALM IMPROVEMENTS Existing Condition



# Plymouth Road Existing Corridor

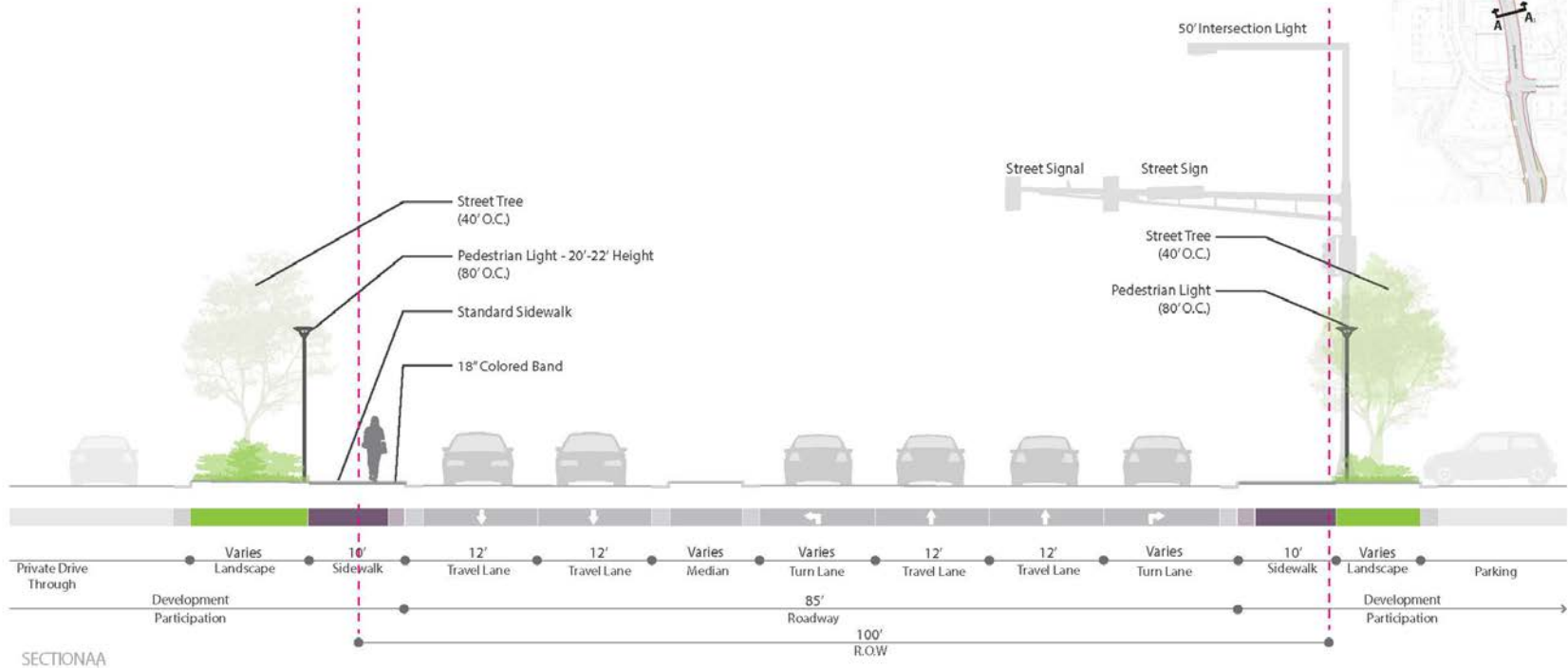


Looking South - West Side of Plymouth Road near Highland Bank



Looking North - East Side of the Plymouth Road

# Plymouth Road Proposed Corridor



SECTIONAA

MINNETONKA PUBLIC REALM IMPROVEMENTS Proposed Conditions

# Intersection Design



- Lights
- Street Tree
- Feature Tree
- 10' Sidewalk
- Special Paving
- Landscape Wall
- ▲ Bus Stop

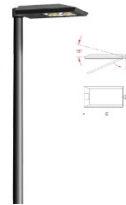
# Proposed Lighting



Lantern Option A - Pole Top, Bega



Lantern Option B - Kipp Post, Louis Poulsen



Intersection - Fixture Options



Base Options



# Intersection Elements

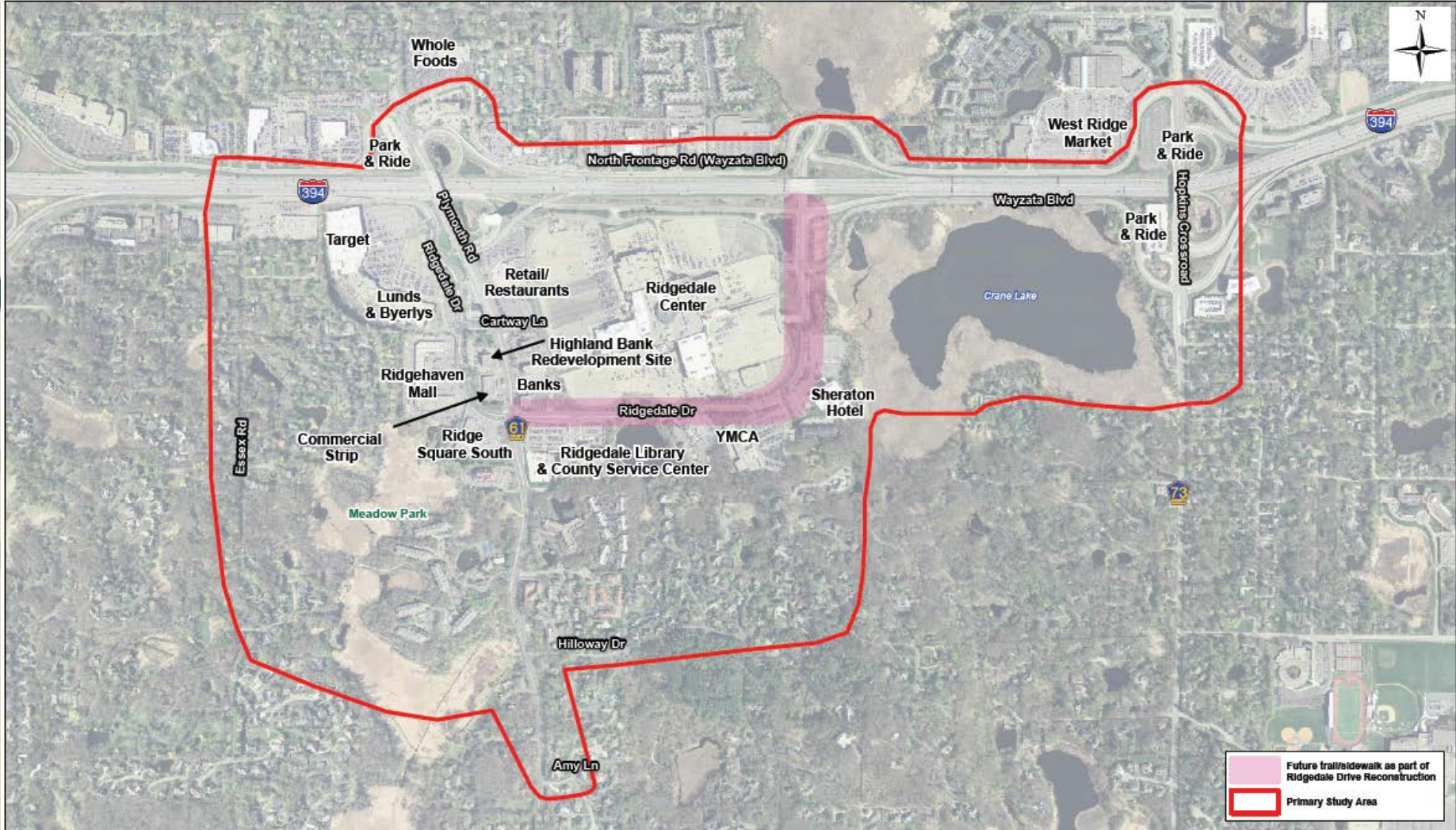




# Jack Corkle, WSB and Associates

## Pedestrian and Trail Planning

# Study Area



# Maps to Review

- Connections beyond Ridgedale area
  - Existing
  - Previously identified (CIP)
  - Potential new/Recommendations
- Connections in Ridgedale area
  - Existing
  - Funded for construction
  - Previously identified (CIP)
  - Potential new/Recommendations
- Bus stop locations and routes

# Next Steps & Schedule

- Ridgedale Area meeting: December 1, 2015
- Final recommendations prior to March 2016
- Begin Ridgehaven Lane/Ridgedale Drive/Cartway Lane)  
construction: 2016 / 2017



# Ridgedale Area Project Update

## Questions / Comments

Electronic Comments @ Minnetonka Matters

<http://minnetonkamatters.com/discussions/ridgedale-area>