

# CSAH 101 North Segment Landscape Improvements

City of Minnetonka, MN

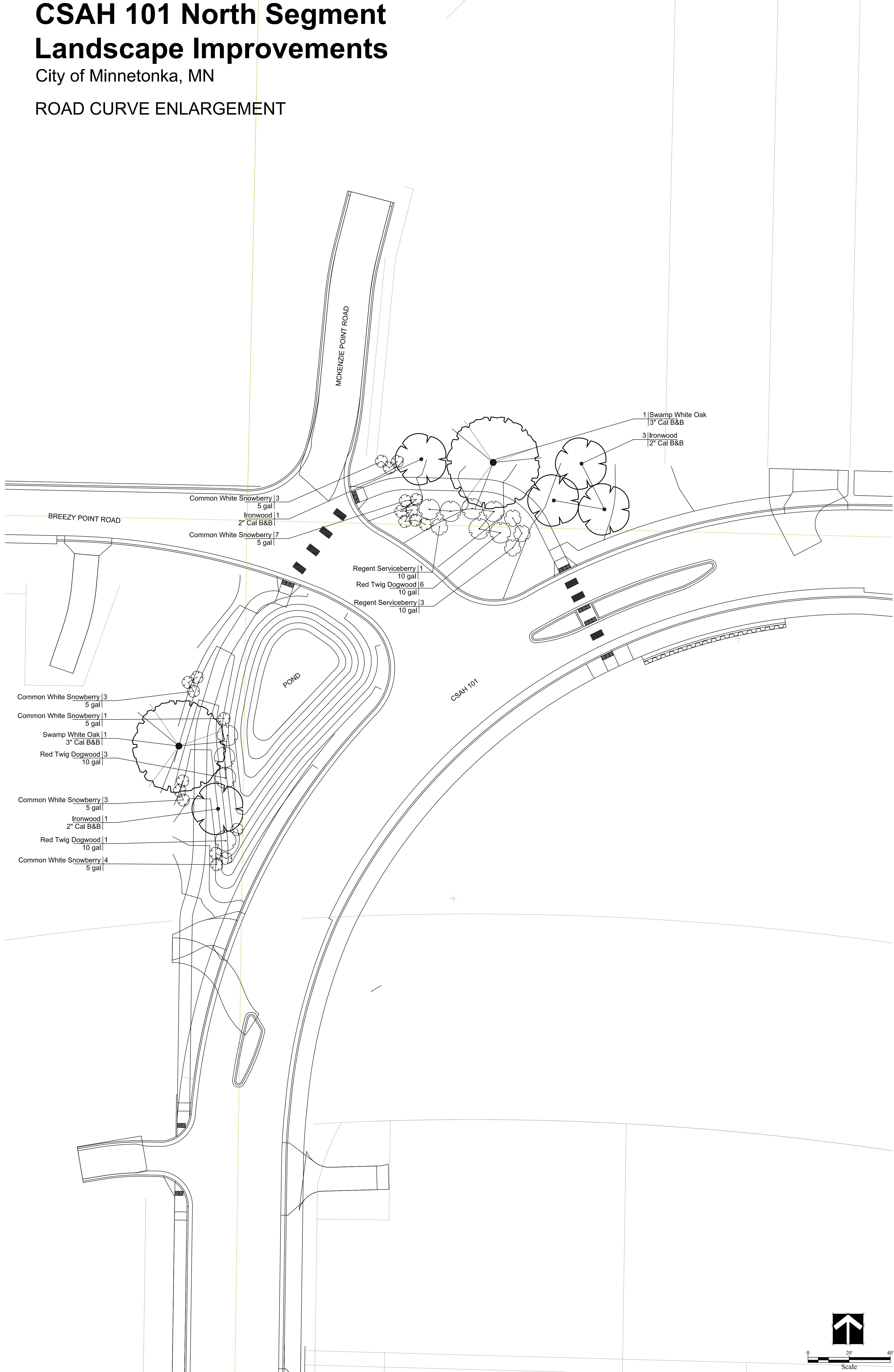
LOCATOR MAP



# CSAH 101 North Segment Landscape Improvements

City of Minnetonka, MN

## ROAD CURVE ENLARGEMENT



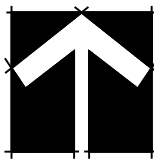
1 Swamp White Oak  
3" Cal B&B  
3 Ironwood  
2" Cal B&B

Common White Snowberry 3  
5 gal  
Ironwood 1  
2" Cal B&B  
Common White Snowberry 7  
5 gal

Regent Serviceberry 1  
10 gal  
Red Twig Dogwood 6  
10 gal  
Regent Serviceberry 3  
10 gal

Common White Snowberry 3  
5 gal  
Common White Snowberry 1  
5 gal  
Swamp White Oak 1  
3" Cal B&B  
Red Twig Dogwood 3  
10 gal

Common White Snowberry 3  
5 gal  
Ironwood 1  
2" Cal B&B  
Red Twig Dogwood 1  
10 gal  
Common White Snowberry 4  
5 gal



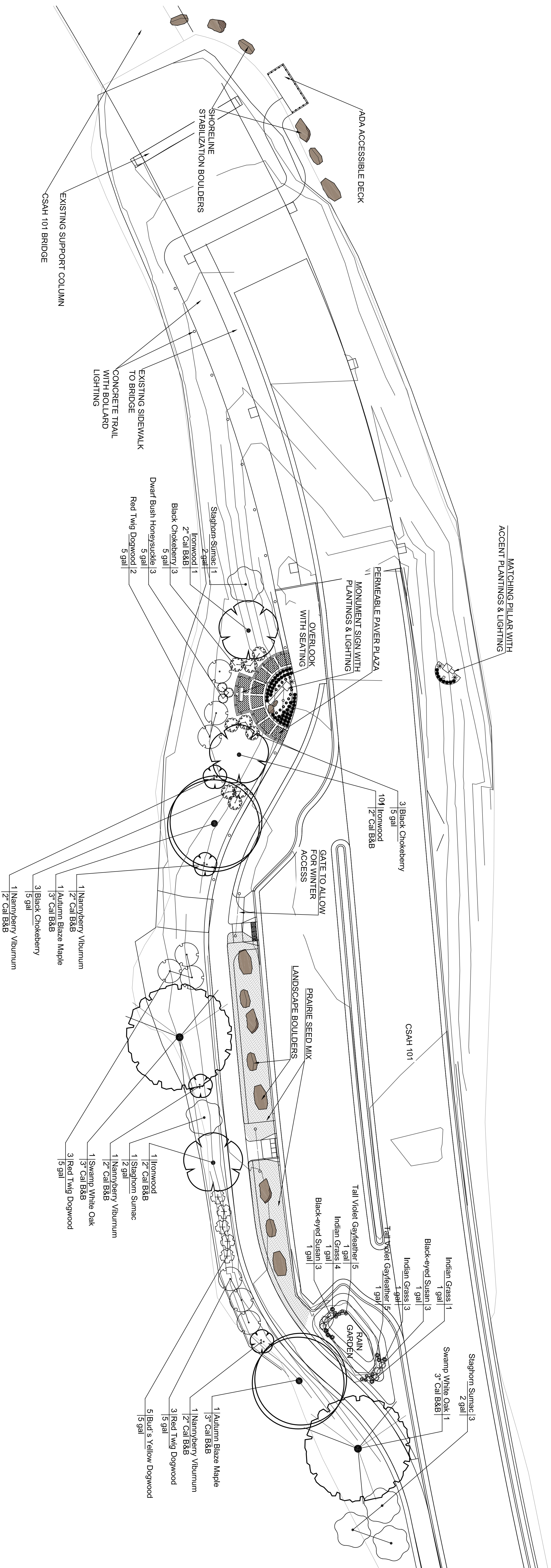
0 20' 40'  
Scale

# CSAH 101 North Segment Landscape Improvements

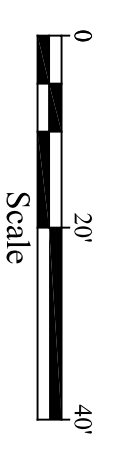
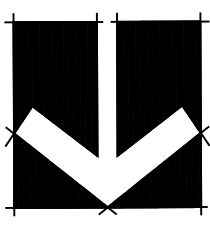
City of Minnetonka, MN

## CAUSEWAY ENLARGEMENT

LAKE MINNETONKA

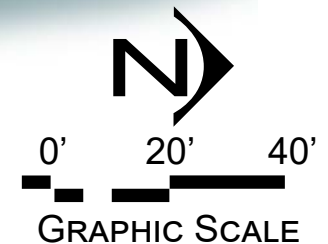
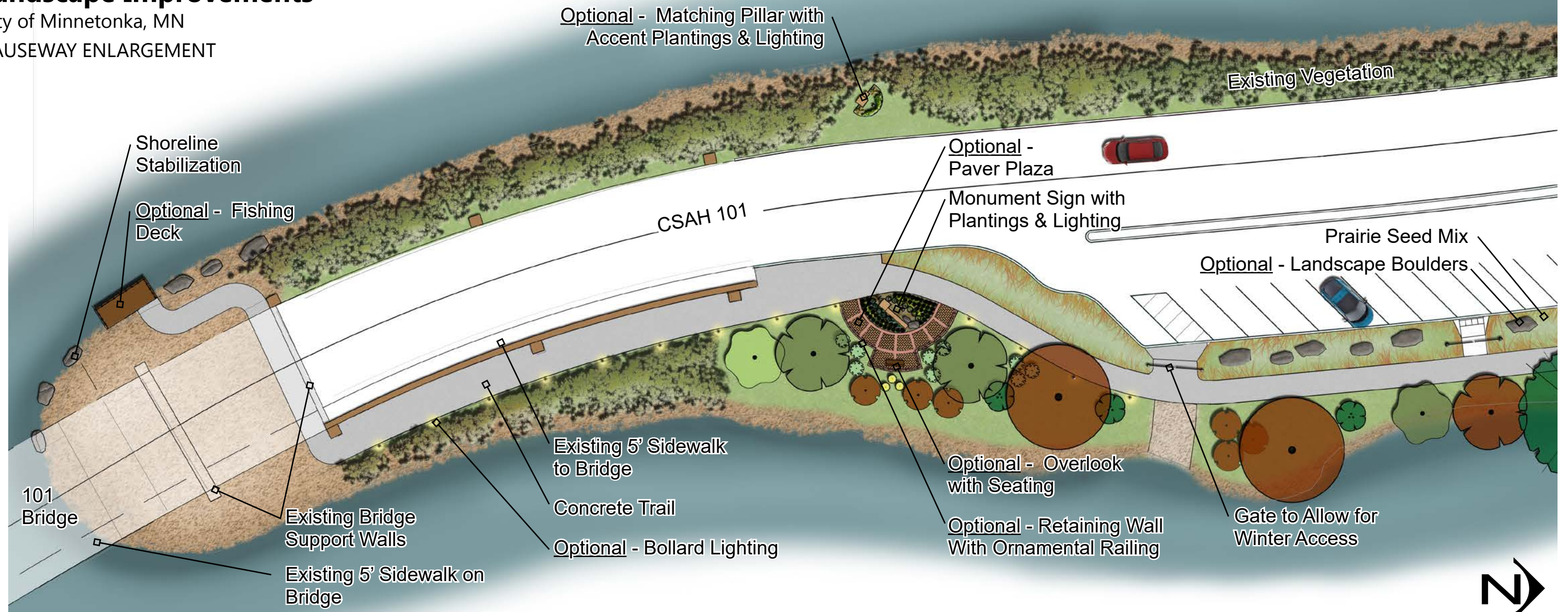


GRAY'S BAY



# CSAH 101 North Segment Landscape Improvements

City of Minnetonka, MN  
CAUSEWAY ENLARGEMENT



**Metal Sign Panel:**  
To be designed to allow for replacement in future for City logo re-branding

