



Robinwood Park Project

Project website: minnetonkamn.gov/robinwoodpark

Aug. 3, 2020

STAFF CONTACT



Darin Ellingson
Streets and Parks
Operations Manager
952-988-8414
dellingson@minnetonkamn.gov

The City of Minnetonka will construct a new park in the Robinwood neighborhood in late summer/early fall 2020.

The new park will be located at the west end of Royzelle Lane, just northwest of the Royzelle Lane and Robinwood Terrace intersection. See the back of this letter for a project area map.

The new park will include separate play structures for 2-5 year olds and 5-12 year olds, a swing set, additional play equipment, two benches and landscaping.

PROVIDE FEEDBACK ON CONCEPT PLAN

We're seeking resident feedback about the new park before plans are finalized. Visit minnetonkamn.gov/robinwoodpark to view the concept plan.

Contact Darin Ellingson at dellingson@minnetonkamn.gov or 952-988-8414 by Aug. 17 to provide feedback.

APPROXIMATE SCHEDULE

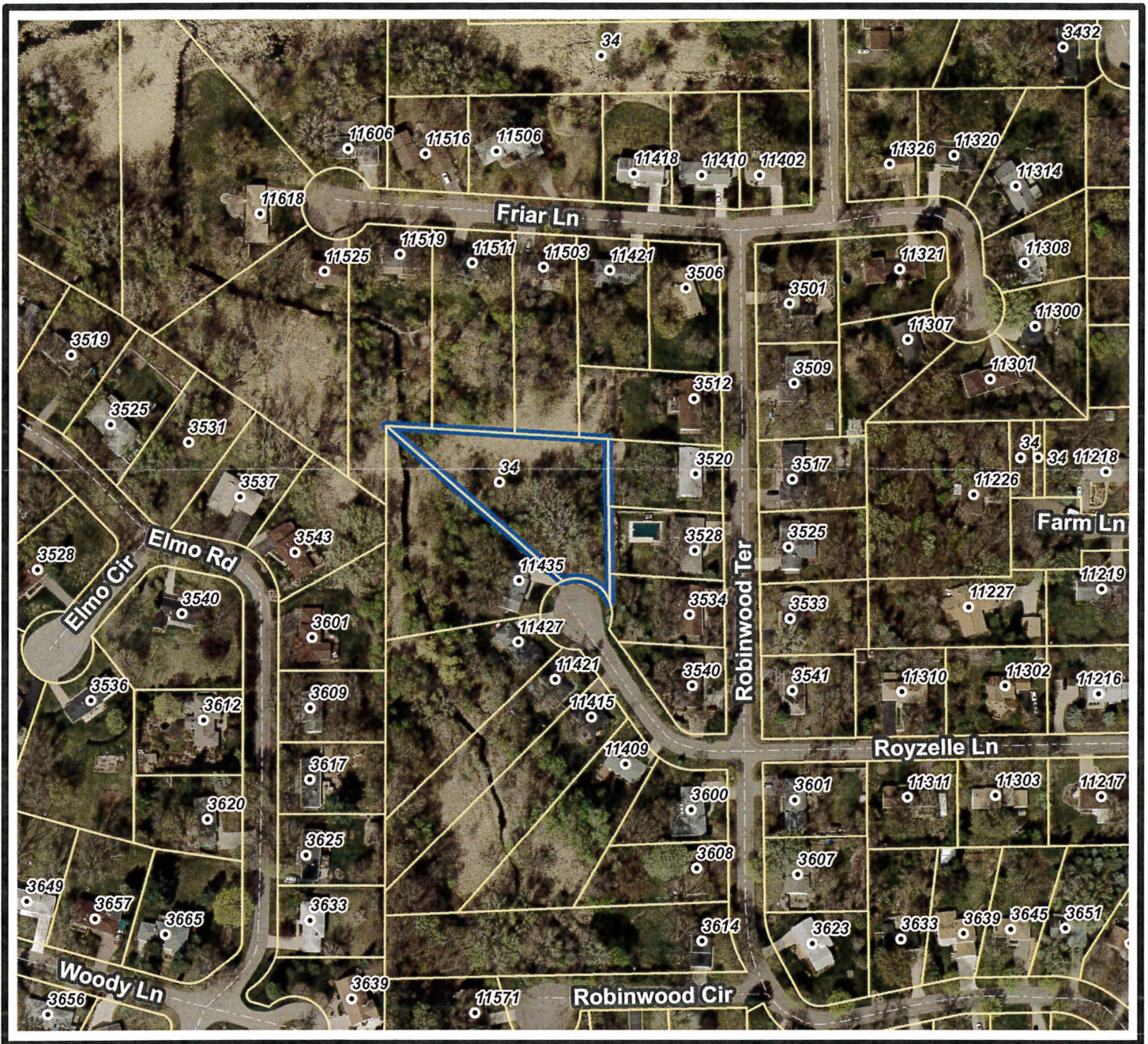
- **August 2020:** Final design and order equipment
- **September 2020:** Construction begins
- **October 2020:** Park expected to open to the public

BACKGROUND


In 2015, residents submitted a petition for a new city park in the Robinwood neighborhood. The proposed park was recommended by the park board in March 2016 and approved by the city council in July 2016, with construction scheduled for 2020. A neighborhood meeting to collect input was held Dec. 10, 2019.

LEARN MORE AND STAY INFORMED

- Visit minnetonkamn.gov/robinwoodpark to view the concept plan and learn more about the park. Stay tuned to the project website for updates.
- Contact Streets and Parks Operations Manager Darin Ellingson at 952-988-8414 or dellingson@minnetonkamn.gov to learn more or ask questions.

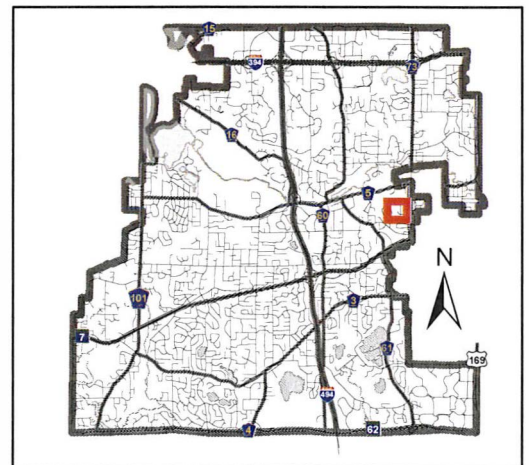


East of 11435 Royzelle Circle

 Proposed Neighborhood Park



CITY OF
MINNETONKA



This map is for illustrative purposes only.