

City of Minnetonka – January 20, 2016

Glen Lake Neighborhood Meeting

Establishing a Long-term Vision for the Glen Lake Neighborhood

Welcome - Introductions

- Julie Wischnack, community development director
- Susan Thomas, planner
- Mark Koegler, planning consultant and area resident - HKGi
- Tim Solomonson, planning consultant - HKGi
- Meeting attendees

Exploring a Long-term Vision for the Glen Lake Neighborhood- AGENDA

- Introductions
- Recap of planning process activities
- Overview of considered sites
- Hear from you! Group Exercise – Brief presentation – small group review and comment – sample of input.
- Next Steps

Schedule

ESTABLISH BASE INFORMATION - JULY

- Organize the Effort
- Establish neighborhood work group

EXPLORATION – AUGUST - SEPTEMBER

- Neighborhood Meeting – 8/13/2015
 - Hennepin County Commissioner Jan Callison
 - Dave Johnson – Park and Recreation Department Director
 - Liz Stout – Water Resources Engineer
- Neighborhood Workshops- Explore Elements of a Common Vision – 8/18/2015
- Explore Development and Redevelopment Alternatives and Connections; and Recreational and Open Space Opportunities



CREATE A STRATEGIC FRAMEWORK FOR THE FUTURE – JANUARY/FEBRUARY

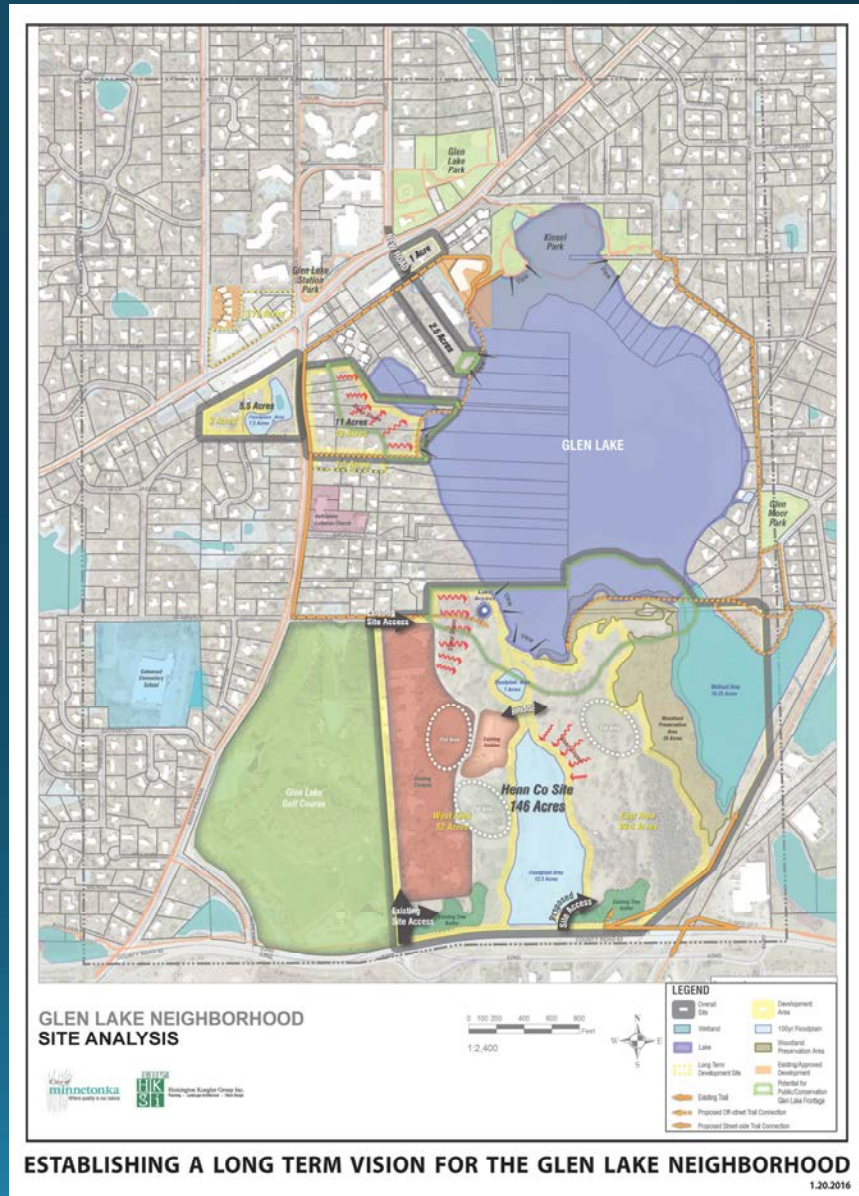
- Assemble Framework Elements
- Compile Framework Document
- Meetings with Planning Commission and City Council

Workshop Exercise Process

- Start with Orientation on Each Concept Area
- Working in small groups at your tables, explore:
 - Land use changes
 - Safety improvements
 - Aesthetic improvements
 - Sidewalk and trail connections
- Note comments, ideas, etc. on Post-it Notes
- Results – Quick sampling small group reporting

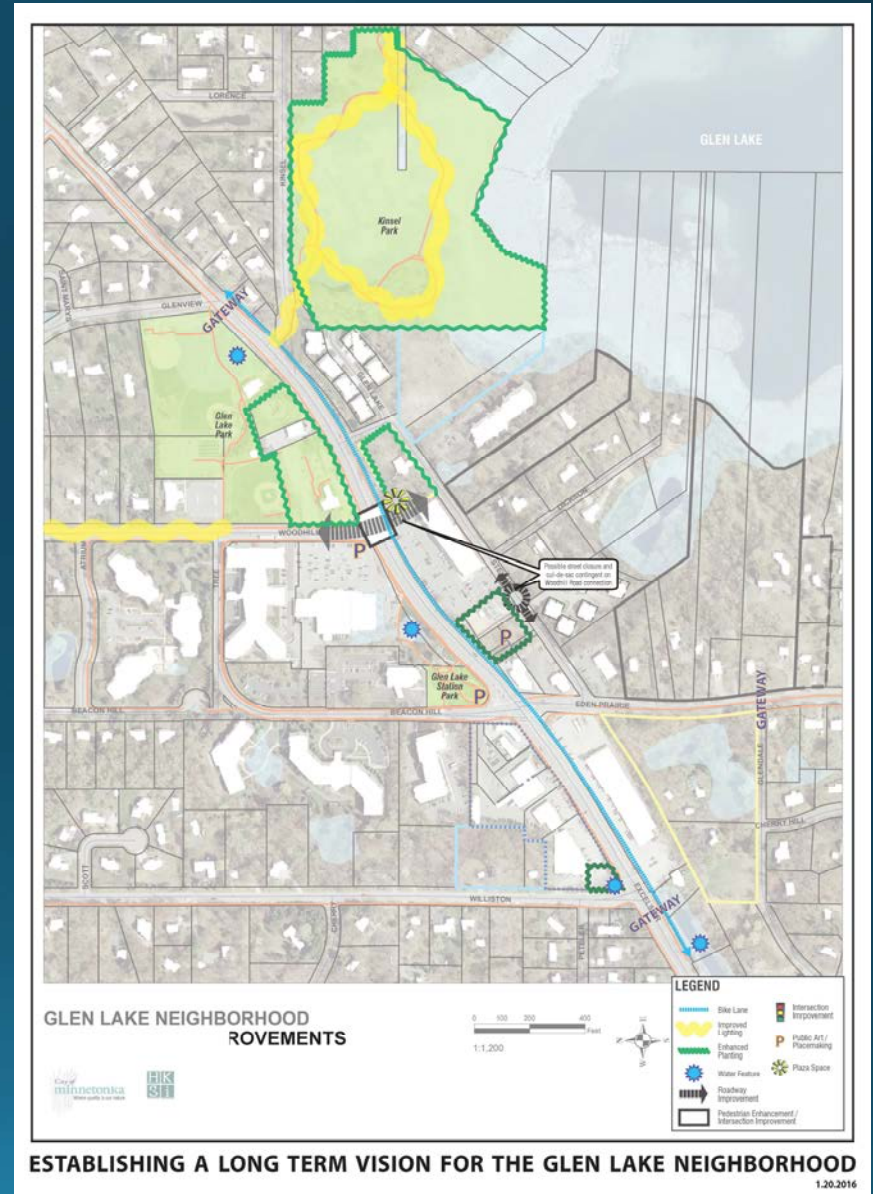
Sites Identification and Analysis

- Public Realm
- West Area
- Central Area
- East Area
- Hennepin County Site



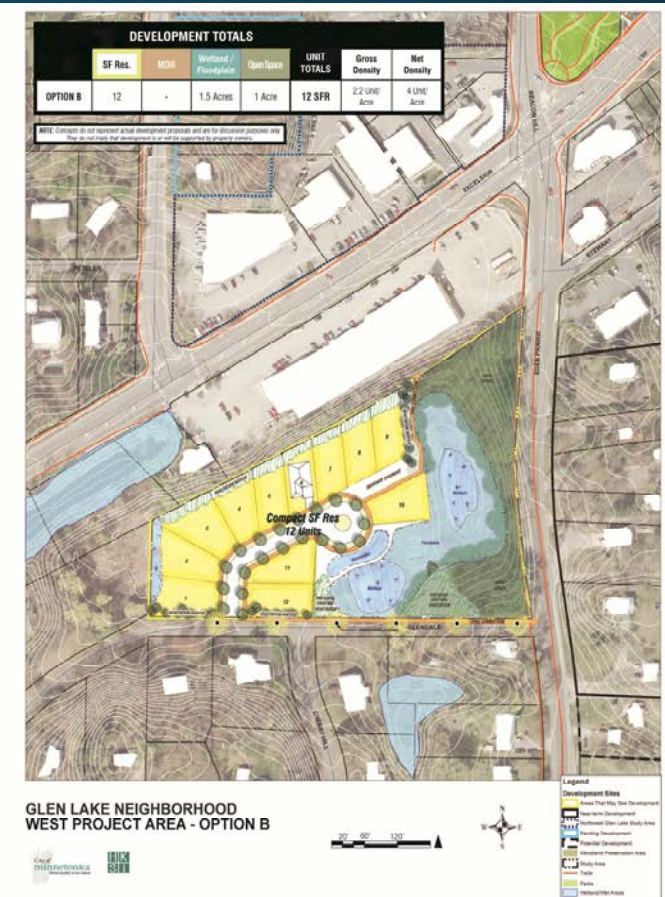
Public Realm

- Roadway improvements
- Intersection improvements
- Pedestrian enhancements
- Improved lighting
- Bike lanes
- Public art



West Area

- No current development interest
- Single-family detached and attached options
- Access alternatives

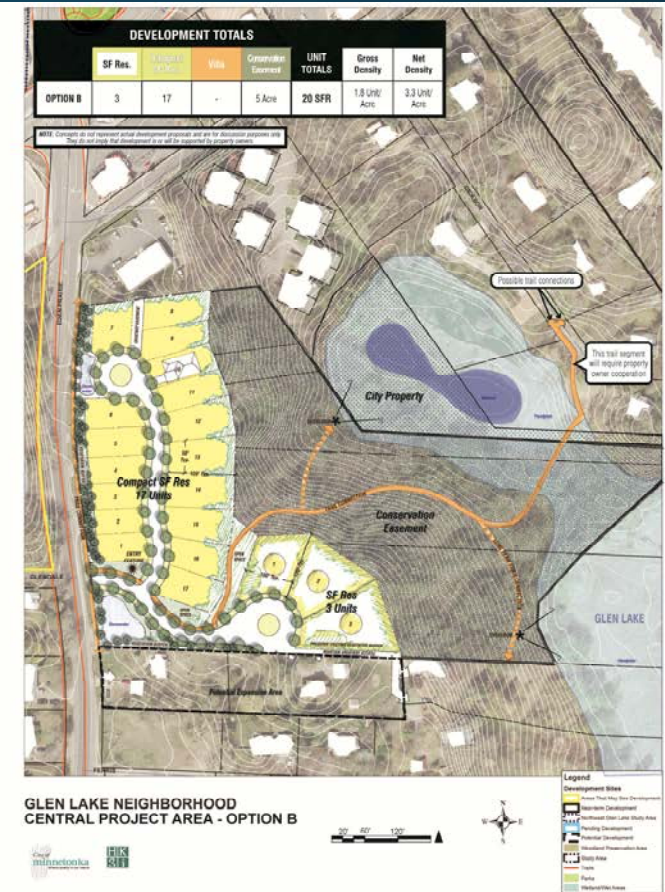


ESTABLISHING A LONG TERM VISION FOR THE GLEN LAKE NEIGHBORHOOD

1.20.2016

Central Area

- Development interest expressed, no specific plans
- Preserve slope areas
- Single-family detached and attached options
- Expanded options to the south



ESTABLISHING A LONG TERM VISION FOR THE GLEN LAKE NEIGHBORHOOD

1.20.2016

East Area

- No current development interest
- Two sites, two options for each
- Trail connections alternatives
- Extension of Woodhill



Hennepin County Site

★★

St. Paul officer on leave
He allegedly urged driving
over marchers. **B4**

Saved: A 1927 White Castle building gets reprieve. B3

AROUND THE METRO 3 • REMEMBERING 6 • WEATHER 8

His life cheated death
Holocaust survivor Treuer
became author, activist. **B6**

TUESDAY, JANUARY 19, 2016

★ StarTribune

STARTRIBUNE.COM/LOCAL • SECTION B

MINNESOTA

LOCAL • STATE • REGION

Counties uniting to treat juveniles

Ramsey, Hennepin move
toward plan to share a facility.

By KELLY SMITH
kelly.smith@startribune.com

After decades running their own juvenile facilities, Hennepin and Ramsey counties are taking the unusual step of teaming up to plan a joint residential treatment center for teenage criminal offenders.

Officials say that the new facility, which won't open at least until 2019, will save both counties money, upgrade the aging facilities that now exist and allow the counties to expand services.

"It shouldn't matter if you're a

young person living east or west of the Mississippi River ... you should have access to the same continuum of services," said Ryan O'Connor, Ramsey County's policy and planning director.

For several years, the two counties have explored replacing their state-licensed facilities — the Hennepin County Home School in Minnetonka and Ramsey County's Boys Totem Town in St. Paul — with a joint facility for teens.

Last month, each county's board approved moving forward with the third planning phase — enlisting an architectural consultant, finalizing the joint facility site and determining costs — before final approval and

construction.

Construction is estimated to cost at least \$37 million, and the counties are asking for \$18 million for the facility in the state's upcoming bonding bill.

Staffers for both counties are working on the logistics of having one facility that is expected to draw 126 to 163 juveniles at a time. They meet next on Jan. 25, and a final report is due by March 2017.

For more than 100 years, courts have sent juveniles to the Hennepin Home School, located on a wooded 167-acre site in Minnetonka, and Totem Town, an 80-acre site in St. Paul. Before 2008, 160 kids typically

See JUVENILE on B2 ▶

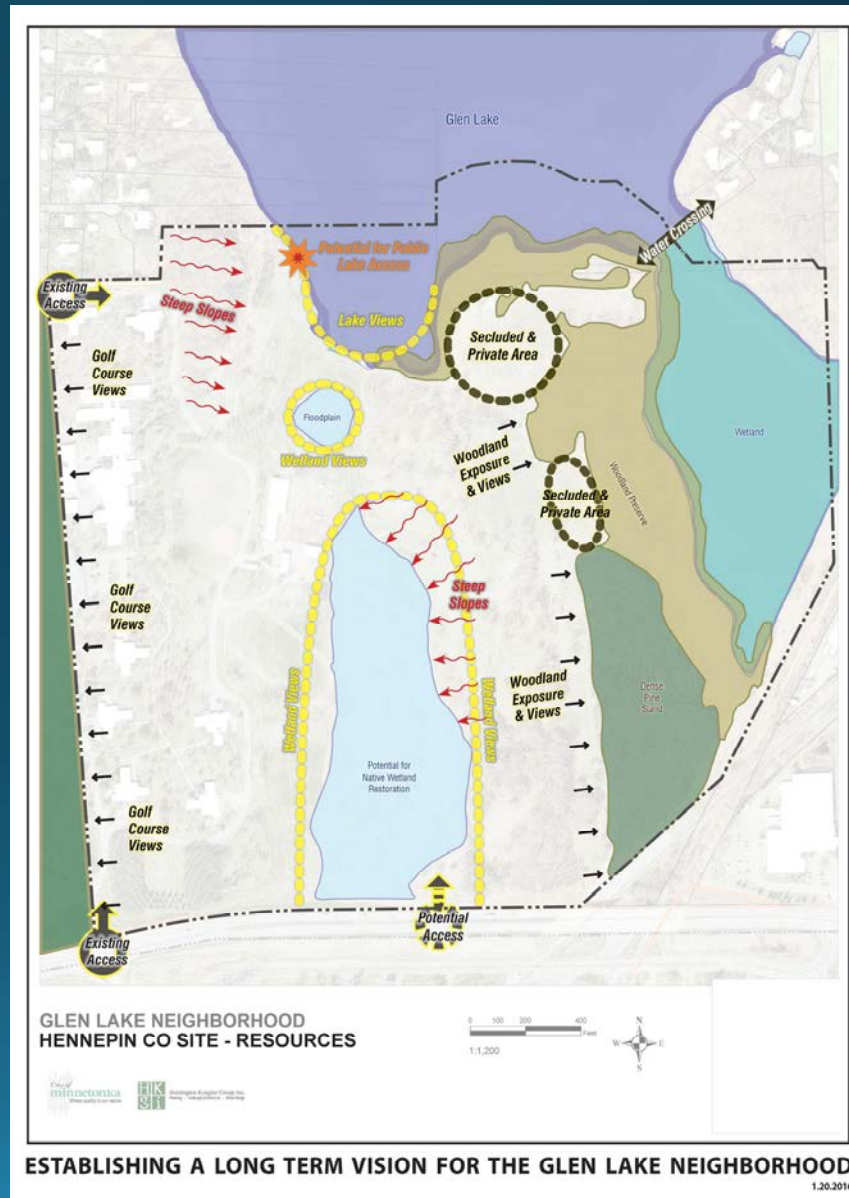


RICHARD TSONG-TAATARIU • rtsong-taatarui@startribune.com

Randy Bacon, acting superintendent of the Hennepin County Home School, is among those pushing for a joint treatment center with Ramsey County.

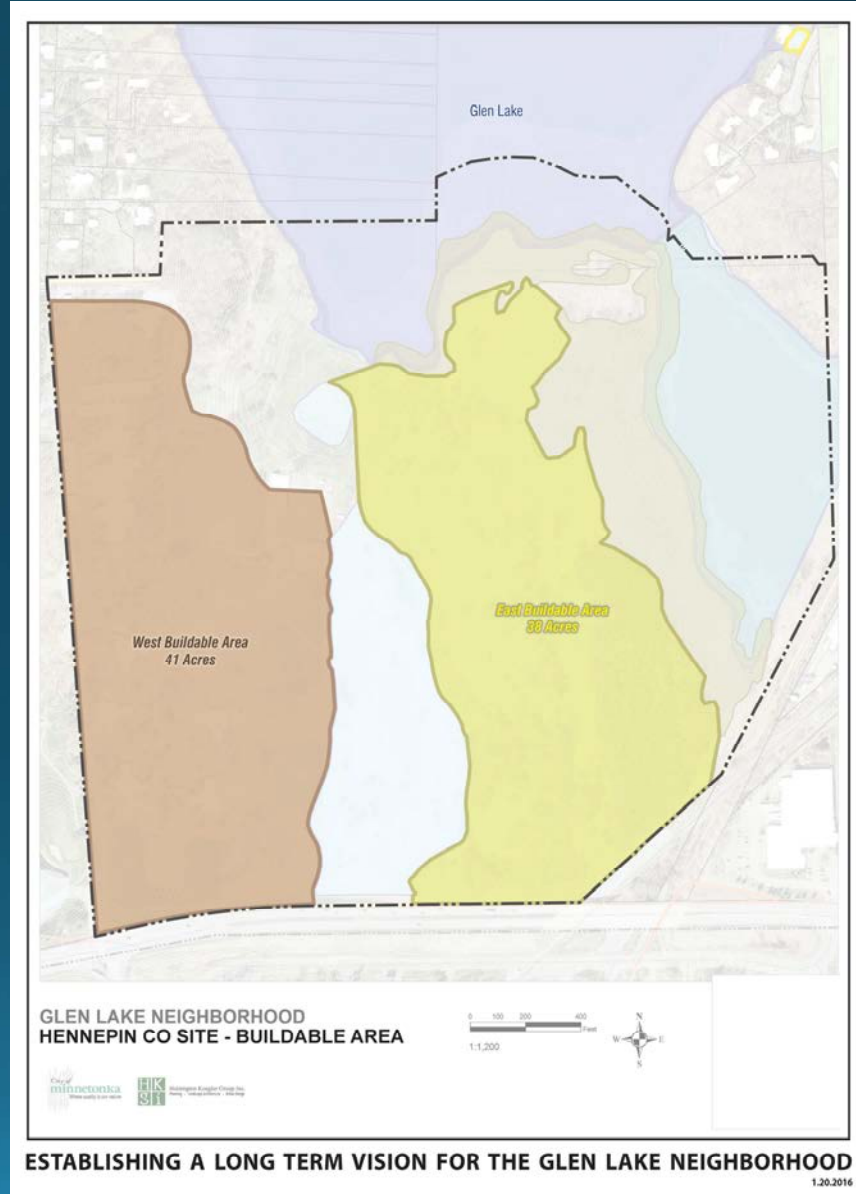
Hennepin County Site – Resources

- Access and views to Glen Lake and wetland complex
- Developable portion of site is flanked by woodland preserve and golf course
- Two existing access points into site with potential third access from Highway 62



Hennepin County Site - Buildable Areas

- West area approximately 41 acres
- East area approximately 38 acres



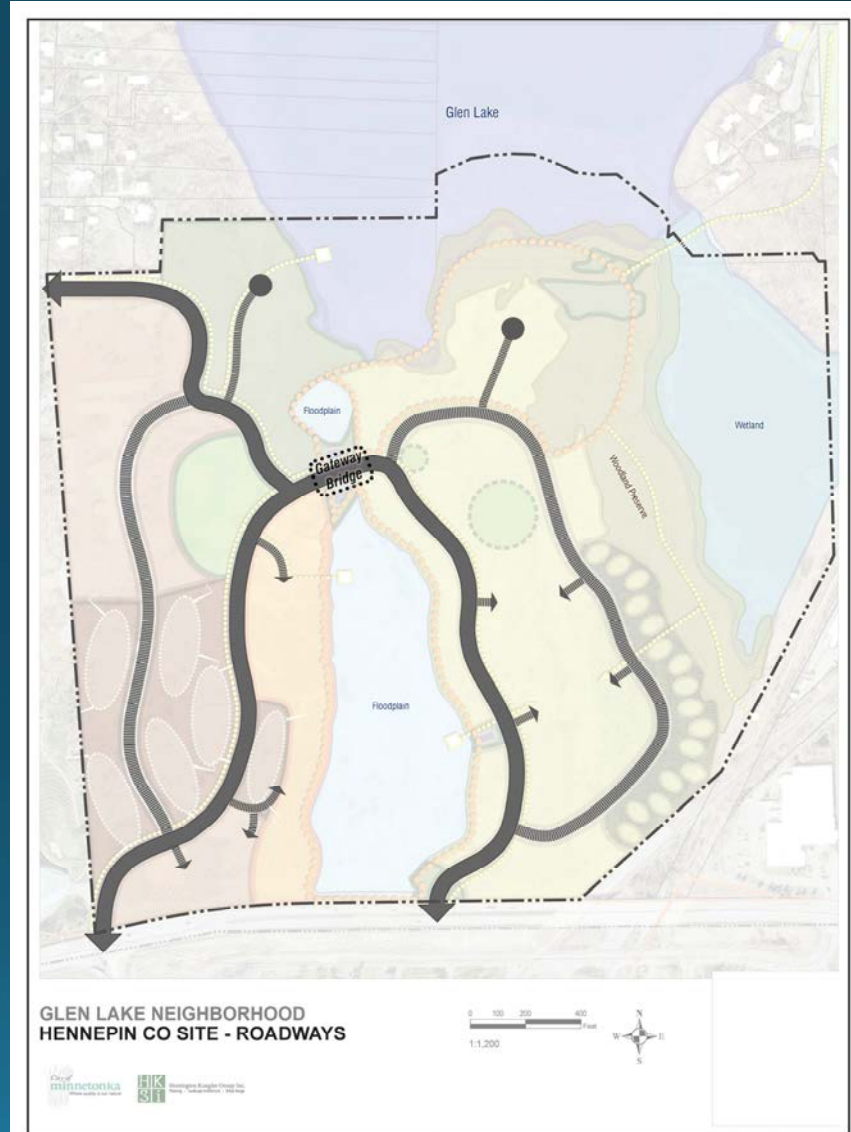
ESTABLISHING A LONG TERM VISION FOR THE GLEN LAKE NEIGHBORHOOD

1.20.2016

Hennepin County Site

-Roadways

- Primary loop road connects site north and south to Eden Prairie Rd. and Highway 62
- Secondary road system provides access for local residents

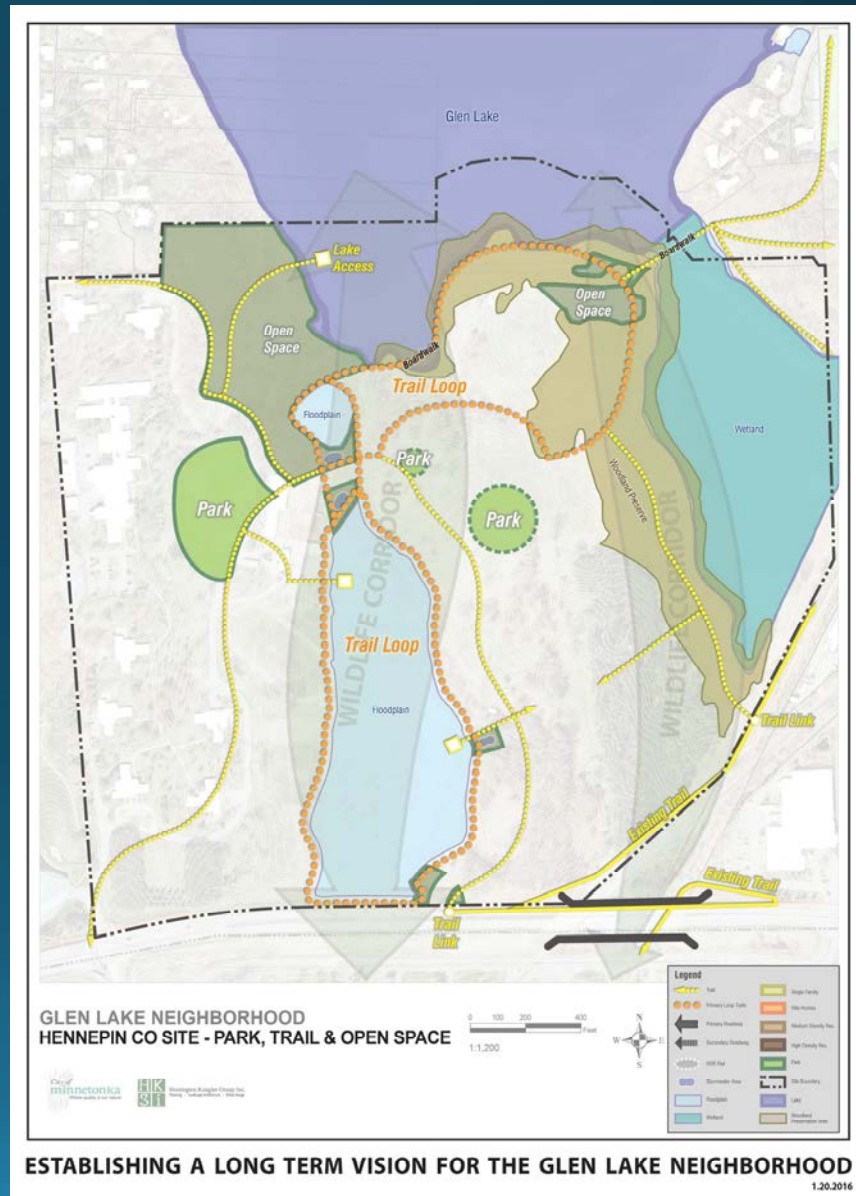


ESTABLISHING A LONG TERM VISION FOR THE GLEN LAKE NEIGHBORHOOD

1.20.2016

Hennepin County Site -Park, Trail & Open Space

- Linked park and open space network
- Loop trails system with connections to greater Glen Lake Neighborhood, natural resources and existing regional trail
- Preserves wildlife corridors through natural resource areas
- Potential lake access point(s)
- Potential for wetland restoration



Next Steps

- Planning Commission
- City Council
- Assemble final framework document

Thank You!

Minnetonka Matters

<http://minnetonkamatters.com/forums/glen-lake>