

City of Minnetonka – July 23, 2015

Glen Lake
~~Village Center~~
Neighborhood
Meeting

Staff Update

- We are a little late starting this process 😊!
- Jeff Thomson, planner
- Julie Wischnack, community development director
- Mark Koegler, planning consultant and area resident
- Bryan Harjes, planning consultant

Agenda for meeting

- Glen Lake Happenings
- Recap of things we have done
- Goals of the continued study
- Describe the next few month's work plan
- Hear from you!
- Next Steps

Glen Lake Happenings

- Grocery store opened a few weeks ago.





Glen Lake Happenings

- Marketing for building on Stewart Lane – 40 reservations (54 units)
- Construction TBD

**OneTwoOne Development brings you
Zvago Cooperative Living for active adults.**
51,368 people live in Minnetonka—we're offering 54 new Glen Lake homes for a select few.

Now accepting reservations—call [952] 679-8715 today!

[ZVAGO]
GLEN LAKE

Glen Lake Happenings

- Former Kraemer's Hardware site



Glen Lake Happenings

- Study about Glen Lake Activity Center
 - Timeframe to be determined
 - Building needs renewal
 - Does not address current requests for use
 - Demands for recreational programming and gym space



Glen Lake Happenings

- Optimist Improvements – spectator viewing area and picnic shelter dedication – Glen Lake Mighty Mites



Glen Lake Happenings

- Finished Eden Prairie Road connection last year



Glen Lake Happenings

- Hennepin County Home School – more next month

on the beat

Star Tribune metro reporters open up their notebooks

Juvenile program to cost \$436K

ROCHELLE OLSON
HENNEPIN COUNTY



Multiple changes are coming in how Hennepin County treats juveniles who need to live

outside their homes.

The Hennepin County Board recently decided to stop sending to other states a small group of difficult-to-treat girls and young women age 14 and older.

The teenagers haven't been declared delinquent by a court, but have multiple psychiatric, psychological and behavioral issues.

Typically, they have failed multiple placements in Minnesota. They also tend to run away and need intensive, costly supervision.

Juvenile program to cost \$436K

Star Tribune metro reporters open up their notebooks

ROCHELLE OLSON HENNEPIN COUNTY

Multiple changes are coming in how Hennepin County treats juveniles who need to live outside their homes.

The Hennepin County Board recently decided to stop sending to other states a small group of difficult-to-treat girls and young women age 14 and older.

The teenagers haven't been declared delinquent by a court, but have multiple psychiatric, psychological and behavioral issues.

Typically, they have failed multiple placements in Minnesota. They also tend to run away and need intensive, costly supervision.

Currently, the county sends these girls to various states in the South. Rex Holzemer, assistant county administrator for Human Services, said there were about six juveniles in the program, two of whom were on the run.

It isn't likely to be cheaper to keep them in Minnesota.

Holzemer made the recommendation to contract with a company called Nexus to give intensive residential treatment to the girls and their families.

Holzemer said treating the girls here would allow them to be closer to and build support networks near their homes.

He recommended — and the board agreed — to spend \$436,000 to renovate a mothballed building at the Hennepin County Home School. The county's home school is on picturesque land off of County Road 62 in Minnetonka.

The decision, however, wasn't wholeheartedly endorsed by the County Board.

Commissioners Jeff Johnson and Mike Opat balked at making the shift without a guarantee of better results for the juveniles. Johnson said he'd like to see a cheaper alternative.

Both commissioners questioned spending money to renovate a property at the home school, which likely won't exist in its current configuration in a few years.

Opat said he understands "the frustration and difficulty of this group" and knows that "results are mixed" from the out-of-state facilities, but said it didn't make sense "to commit to a site on that campus when we have another plan there."

Hennepin and Ramsey counties are formally devising a plan to merge their residential home schools. Both facilities are aging and need significant renovations.

On Nov. 1, both county boards will have a recommendation that would include governance, management, funding and location for a new school.

From planning to occupancy, the project could take up to four years, county administrators said.

Hennepin County Board Chairwoman Jan Callison voted for the proposal, which passed 5-2. She said she didn't want to let that time pass without an effort. "That's four years worth of kids that we believe we can do better" for, she said.

The Hennepin County Home School is a secure residential treatment facility for juveniles and young adults ages 13 to 20 who have been sent there by the courts. It sits on 167 acres of prime west-suburban real estate. Ramsey County operates Boys Totem Town in the Battle Creek neighborhood of St. Paul. Juvenile justice system changes in the past decade have driven down populations housed at both of the counties' residential facilities.

Use of juvenile detention centers has dropped precipitously as well. rochelle.olson@startribune.com

Recap of where we have been

- Last summer – NW Glen Lake Study
- Great participation
- Great outcomes
- The document is being referenced as we review development and proposals.
- Last Fall's Meetings



Responses from meetings last fall

Areas to be Highlighted (focus) with Broader Study

- Vision
- Change
- Transportation
- Placemaking
- Natural Resources
- Development & Design
- Process
- The Plan



Above: Attendees at the Block Exercise, July 2014.

VISION

- Planning cycle more than 20-30 years so need to plan for the next generation.
- Low meeting attendance indicates that people are more motivated to attend meetings when they have negative reactions than positive.
- What do the futurists say?
- Is Glen Lake a “forgotten” place? What does not being in the mainstream mean to its future?
- Decide what we want in 20 years
- What would we allow to be lost? What would we like to keep?
- Consider broader community and how it contributes to vitality of Glen Lake.
- Identify areas where there is opportunity for the city to be more involved to influence

CHANGE

- Should be communicated that change is inevitable. Important to get ahead of trends with advance planning.
- Area will continue to experience turnover in housing and schools as older people leave.
- Open enrollment implications at Hopkins and Minnetonka School Districts.
- Consider the repurposing of senior buildings to the next market demand.



TRANSPORTATION

- Population, traffic and parking are going to increase. Consolidate parking and use areas to create options and efficiencies. Not every site can support everything it needs by itself.
- Parking should not be obtrusive. Possibly underground rather than a structure.
- A trail around the lake
- Connection from Hwy 62/Eden Prairie Road to Glen Lake – County property opportunities; bike path; influence on what happens in Glen Lake?
- Regional trail connections to Minnesota River Bluffs/Cedar Lake
- Safety and maintenance of trails and sidewalks
- Excelsior Blvd crossing at high traffic times
- Increased safety for bike lanes

PLACEMAKING

- Center for cohesive place. Community with particular functions to serve the needs of the population.
- Hennepin County land considerations – open space and development
- Plan the area around walking - “walkable center”
- Urban gathering space – different than green space

NATURAL RESOURCES

- Balancing density with nature – need for protection of environment. Map density areas.
- How do we preserve and protect?
- Green space from redevelopment

DEVELOPMENT & DESIGN

- Building design standards – zoning requirements
- How to address vacant/underutilized properties/buildings
- Study density and its implications on what Glen Lake could be as a result of significant changes? (what is high density?)
- How to make it comfortable to all? Useful to what people want?
- How to address development pressure on the edges
- Future zoning of parcels on Eden Prairie Road
- Substation lifespan at the Glen Lake site?



Left: A park located in the north western Glen Lake area. Right: Mature trees surround the nearby residential areas.

PROCESS

- Keep building on the past summer planning series.
- The study area needs a logical but reasonable boundary for noticing.
- Village center names are confusing.
- Meeting times – change to 7 p.m.; different days of the week; multiple meetings of the same topic; coffee shop meetings.

THE PLAN

- The plan ultimately needs the support of the city council
- How will the city council implement the plan?
- Communications strategy to revisit the plan



Upcoming Schedule



ESTABLISH BASE INFORMATION - JULY

- Organize the Effort

EXPLORATION – AUGUST

- Explore Elements of a Common Vision
- Explore Development and Redevelopment Alternatives and Connections; and Recreational and Open Space Opportunities
- Guest speakers including Commissioner Callison

CREATE A STRATEGIC FRAMEWORK FOR THE FUTURE – SEPTEMBER/OCTOBER

- Assemble Framework Elements
- Compile Framework Document



Meeting Summary

Public Meetings

- Neighborhood Work Group (4)
- Neighborhood (5)
- Joint Planning Commission/City Council
- Planning Commission
- City Council



New Input Tools

- Minnetonka Matters

<http://minnetonkamatters.com/discussions/glen-lake>

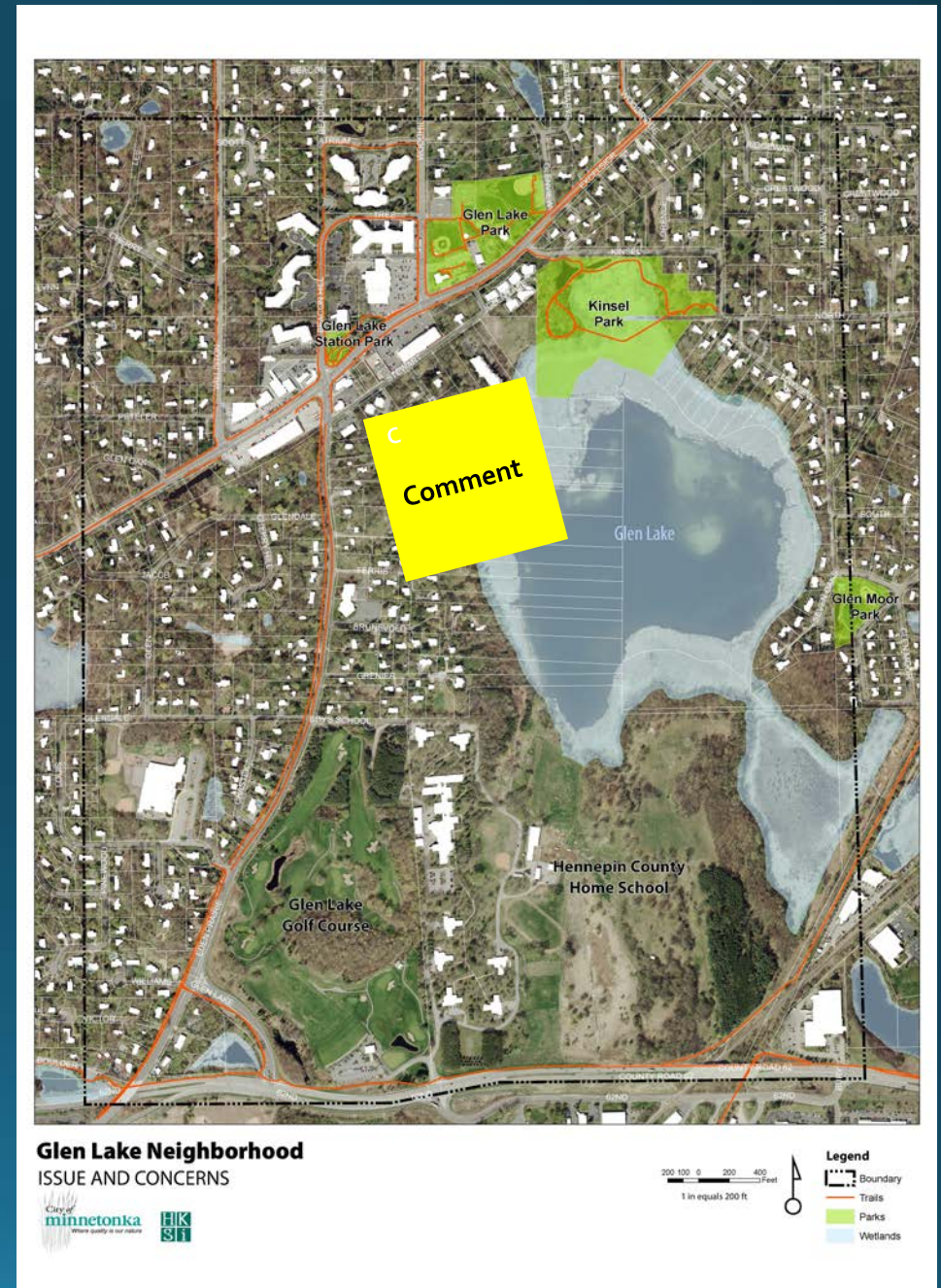
- Videos may be used as well



Exercise #1

Identify Issues and Concerns

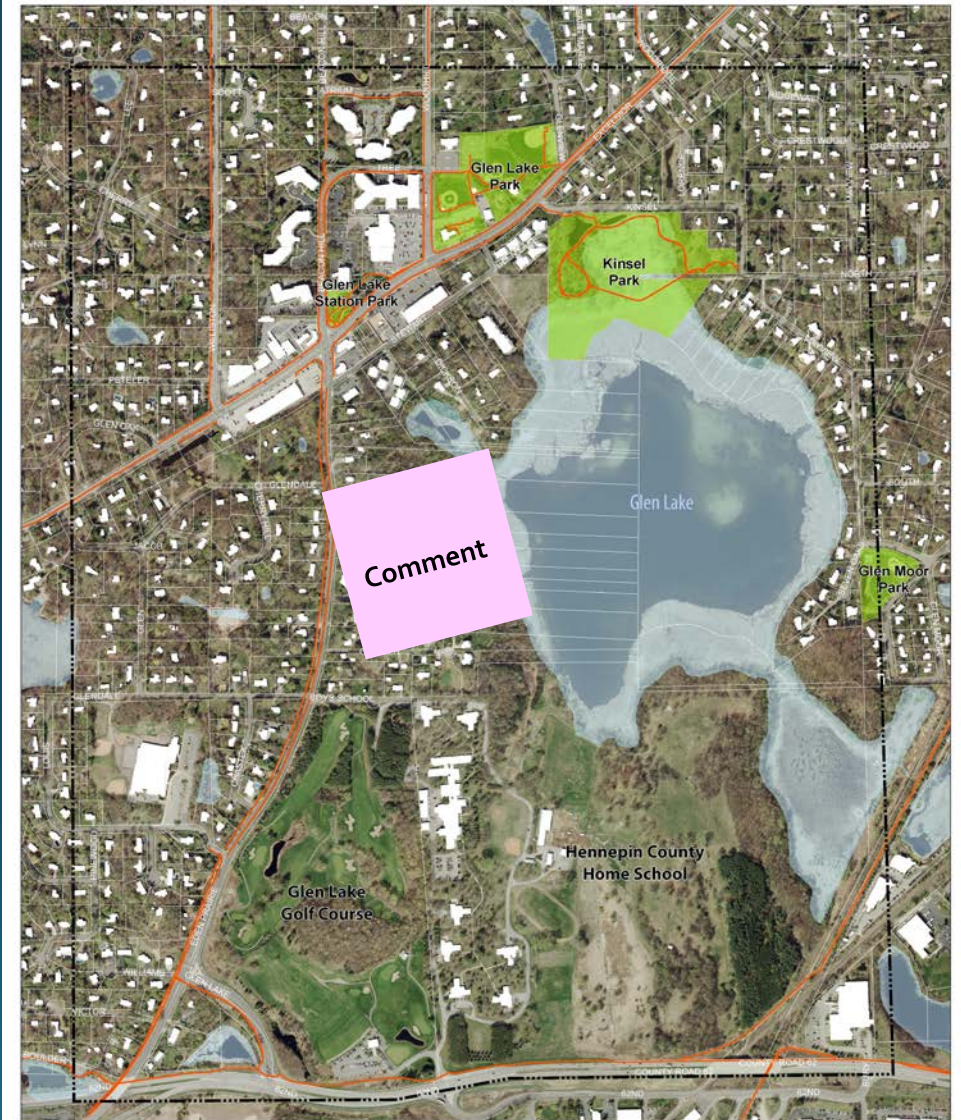
- Consider:
 - Traffic patterns
 - Development
 - Safety
 - Aesthetics
 - Others
- Note responses on yellow Post-its®
- “Popcorn” reporting



Exercise #2

Identify Opportunities and Areas of Inspiration

- Consider:
 - New connections
 - New/revised development
 - Gathering places – public/private
 - Natural or other amenities
 - Others
- Note responses on pink Post-its®
- “Popcorn” reporting



Glen Lake Neighborhood
OPPORTUNITIES AND AREAS OF INSPIRATION



Next Steps

- Need Workgroup Volunteers (10 people)
- Neighborhood Meeting – Thursday, August 13th – Commissioner Callison and other presenters
- Vision Workshops - Tuesday, August 18th
 - Location: The Glenn – Glen Lake
 - Session times:
 - 1:30 p.m. to 3:30 p.m.
 - 7:00 p.m. to 9:00 p.m.
 - Same program - please attend the session that is most convenient for you
- Workgroup and Neighborhood Meetings – September/October
- Other opportunities for city to attend other functions?