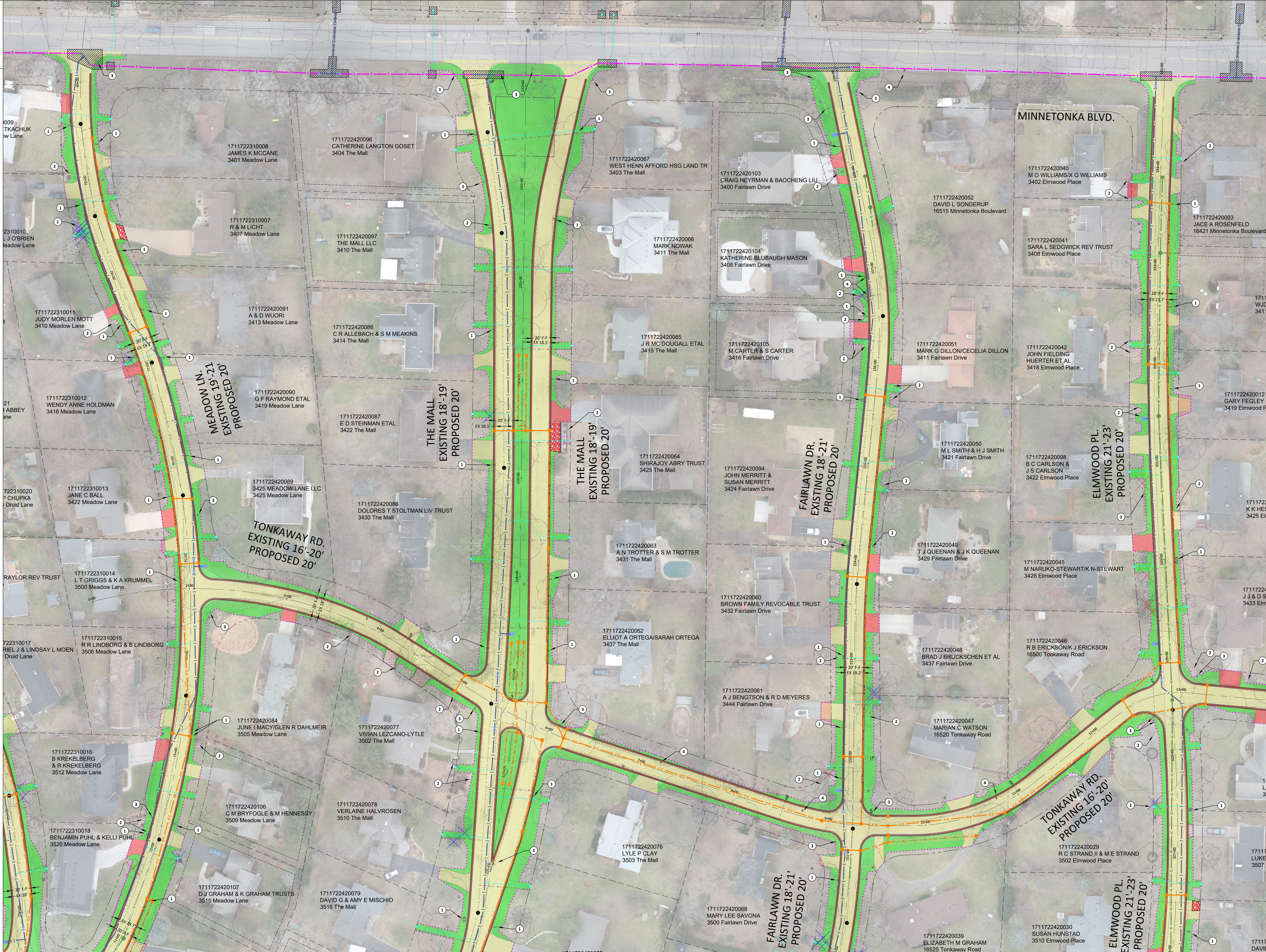
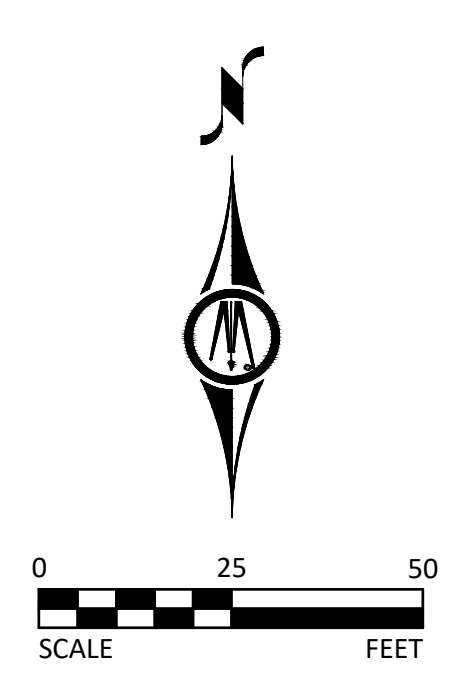
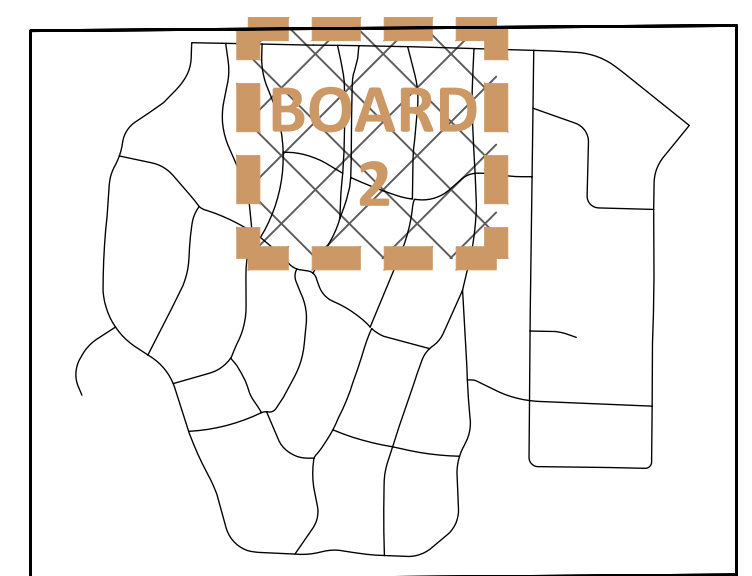


PRELIMINARY STREET LAYOUT

- LEGEND**
- EXISTING RIGHT OF WAY
 - PROPOSED BITUMINOUS PAVEMENT (STREET/DRIVEWAY)
 - PROPOSED BITUMINOUS TRAIL PAVEMENT
 - PROPOSED CONCRETE PAVEMENT
 - PROPOSED CONCRETE TRAIL
 - PROPOSED CONCRETE CURB AND GUTTER
 - PROPOSED CONCRETE RIBBON CURB
 - PROPOSED GRAVEL DRIVEWAY
 - PROPOSED PAVER DRIVEWAY
 - PROPOSED TEMP EASEMENT NEEDED
 - PROPOSED TURF
 - EXISTING SANITARY SEWER TO REMAIN IN PLACE
 - EXISTING SANITARY SEWER SERVICE TO REMAIN IN PLACE
 - EXISTING SANITARY SEWER MANHOLE TO REMAIN IN PLACE
 - PROPOSED SANITARY SEWER
 - PROPOSED SANITARY MANHOLE
 - PROPOSED SANITARY SEWER SERVICE
 - PROPOSED SANITARY FORCEMAIN REPLACEMENT
 - PROPOSED WATERMAIN REPLACEMENT
 - PROPOSED TRENCHLESS WATERMAIN
 - PROPOSED PIT LOCATIONS FOR TRENCHLESS WATERMAIN
 - PROPOSED HYDRANT LOCATION
 - PROPOSED GATE VALVE LOCATION
 - PROPOSED WATER SERVICE REPLACEMENT
 - EXISTING STORM SEWER
 - EXISTING STORM SEWER STRUCTURES
 - PROPOSED STORM SEWER
 - PROPOSED INFILTRATION PIPE
 - PROPOSED STORM SEWER STRUCTURES
 - WETLAND DELINEATION
 - CONSTRUCTION LIMITS
 - TREE REMOVAL DUE TO STREET CONFLICT
 - TREE REMOVAL DUE TO WATERMAIN CONFLICT
 - TREE REMOVAL DUE TO WATER SERVICE CONFLICT
 - TREE REMOVAL DUE TO STORM SEWER CONFLICT
 - RELOCATE MAILBOX
 - LANDSCAPE AFFECTED
 - RELOCATE SIGN
 - RELOCATE UTILITY
 - STORMWATER MANAGEMENT INFILTRATION PIPE



CITY OF MINNETONKA

BOLTON & MENK

JUNE 2021

H:\MTA\11912148\3_Preliminary\B_Layouts\11912148-3-PROJECT_LAYOUT_PUBLIC.LAYOUT.dwg, 6/29/2021, 3:40:27 PM